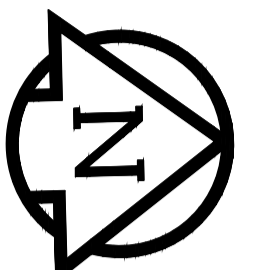
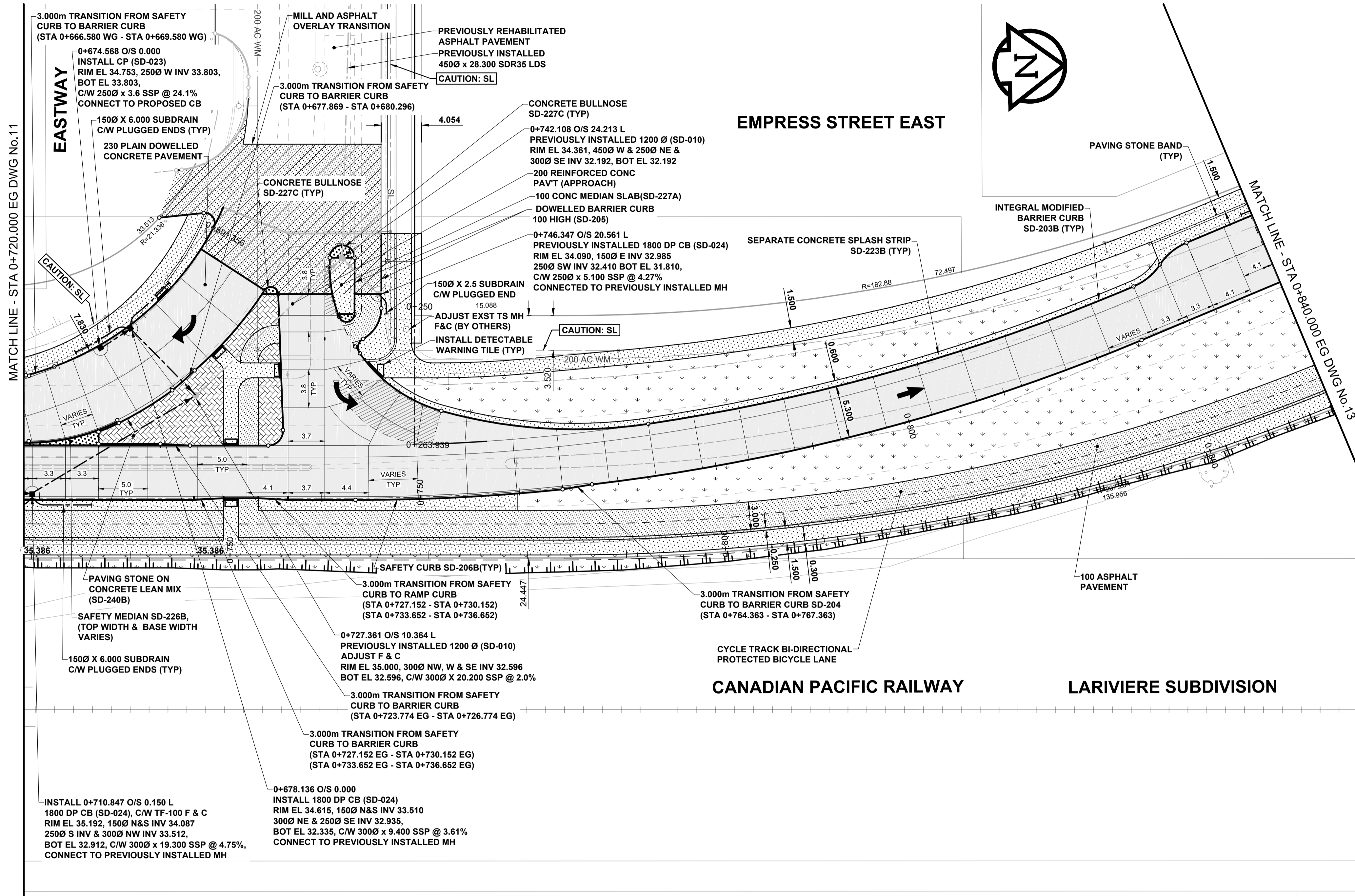


ISO A1 - 564mm x 841mm

Last Saved: 8/30/2018 8:19 AM by DDozrod Plotted: 8/30/2018 8:19 AM by Daniel Dozrod

O:\Winnipeg\Proj\160034\Drawings\Drawings\Detailed Design\2-Reconstruction\160034-12-Empress-Recon-PA-12.dwg

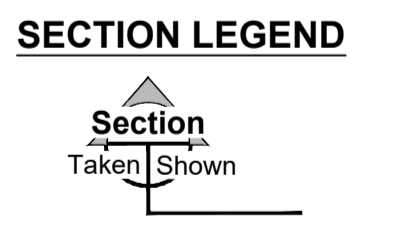


MATCH LINE - STA 0+720.000 EG DWG No. 11

MATCH LINE - STA 0+840.000 EG DWG No. 13

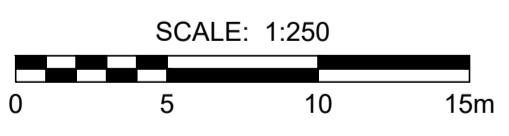
- REFERENCE LEGEND**
- SEE SHEET 27 FOR GRADING
 - SEE SHEET 44 FOR PROFILES
 - SEE SHEET 56 FOR CYCLE TRACK PROFILES
 - SEE SHEET 74 FOR LANDSCAPING

- NOTES**
1. ADJUST MH'S, CB RIMS, WVS AND HYD'S TO NEW GRADES.
 2. CONTRACTOR TO REGRADE/RENEW EXST PRIVATE SIDEWALKS TO LIMITS AS SHOWN. SIDEWALKS TO BE RENEWED WITH CONCRETE UNLESS NOTED OTHERWISE.
 3. CONTRACTOR TO TAKE PRECAUTIONARY STEPS AS OUTLINED IN THE SPECIFICATIONS TO PROTECT EXISTING TREES WITHIN THE LIMITS OF CONSTRUCTION FROM DAMAGE FROM CONSTRUCTION ACTIVITIES.
 4. MODIFIED BARRIER CURB TO BE CONSTRUCTED AT ALL INTERSECTION RADII, BACK LANE RADII AND BULLNOSES.
 5. CONTRACTOR TO CONFIRM THE LOCATION OF ALL UTILITIES/SERVICES IN THE FIELD PRIOR TO CONSTRUCTION.
 6. ADD 200.000m TO ABBREVIATED ELEVATIONS TO OBTAIN GEODETIC ELEVATIONS.
 7. CB SD-024 OFFSETS ARE DIMENSIONED TO BOC. CB SD-025 OFFSETS ARE DIMENSIONED OIC.
 8. ALL DIMENSIONS TO BACK OF CURB AND THEORETICAL BACK OF CURB.



METRIC
WHOLE NUMBERS INDICATE MILLIMETRES
DECIMALIZED NUMBERS INDICATE METRES

| EXISTING | LEGEND - PLAN | NEW | EXISTING | LEGEND - PLAN | NEW | EXISTING | LEGEND - PLAN | NEW |
|----------|-------------------------|-----|-------------------------|---------------|------------------------|----------|--|-----|
| | GAS | | MANHOLE | | CONCRETE PAVEMENT | | LOCATION APPROVED | |
| | MTS / PEDESTAL | | CATCH BASIN / CATCH PIT | | CONC SIDEWALK / MEDIAN | | UNDERGROUND STRUCTURES | |
| | HYDRO / CABINET | | CURB INLET WITH BOX | | ASPHALT PAVEMENT | | SUPR. UTIL. STRUCTURES | |
| | CATV / FIBRE OPTIC | | TREE | | PAVING STONE | | DATE | |
| | TRAFFIC SIGNALS / PIT | | TEST HOLE | | GRAVEL | | NOTE: | |
| | LAND DRAINAGE SEWER | | PROPERTY LINE | | RAMP CURB | | LOCATION OF UNDERGROUND STRUCTURES | |
| | SANITARY/COMBINED SEWER | | SURVEY BAR | | PLANING / REMOVAL | | AS SHOWN ARE BASED ON THE BEST | |
| | CB LEAD / SSP / DCP | | FENCE | | | | INFORMATION AVAILABLE BUT NO | |
| | WATER MAIN | | BOC / EDGE OF PAVEMENT | | | | GUARANTEE IS GIVEN THAT ALL EXISTING | |
| | SUBDRAIN | | ELEVATION (33.333) | | | | UTILITIES ARE SHOWN OR THAT THE GIVEN | |
| | DITCH | | TRAFFIC SIGN | | | | LOCATIONS ARE EXACT. CONFIRMATION OF | |
| | EXISTING | | NEW | | | | EXISTENCE AND EXACT LOCATION OF ALL | |
| | LEGEND - PLAN | | LEGEND - PLAN | | | | SERVICES MUST BE OBTAINED FROM THE | |
| | LEGEND - PLAN | | LEGEND - PLAN | | | | INDIVIDUAL UTILITIES BEFORE PROCEEDING | |
| | LEGEND - PLAN | | LEGEND - PLAN | | | | WITH CONSTRUCTION. | |



DESIGNED BY: WRJ
DRAWN BY: DID
CHECKED BY: RPB
APPROVED BY: BWB
RELEASED FOR CONSTRUCTION: N/A

THE CITY OF WINNIPEG
PUBLIC WORKS DEPARTMENT
ENGINEERING DIVISION

EMPRESS STREET PROJECT
PAVEMENT RECONSTRUCTION
PAVING
EMPRESS STREET EAST
STA 0+720.000 EG TO STA 0+840.000 EG

CITY DRAWING NUMBER: P-3494-12
SHEET 12 OF 168
DRAWING No. REV 12 B

| NO. | REVISIONS | DATE | BY |
|-----|--------------------------|----------|-----|
| B | ISSUED FOR TENDER | 18/09/04 | RPB |
| A | ISSUED FOR CLIENT REVIEW | 18/06/27 | RPB |

HOR SCALE: 1:250
VERT SCALE: N/A
DATE: 18/09/04

BID OPPORTUNITY No. 602-2018