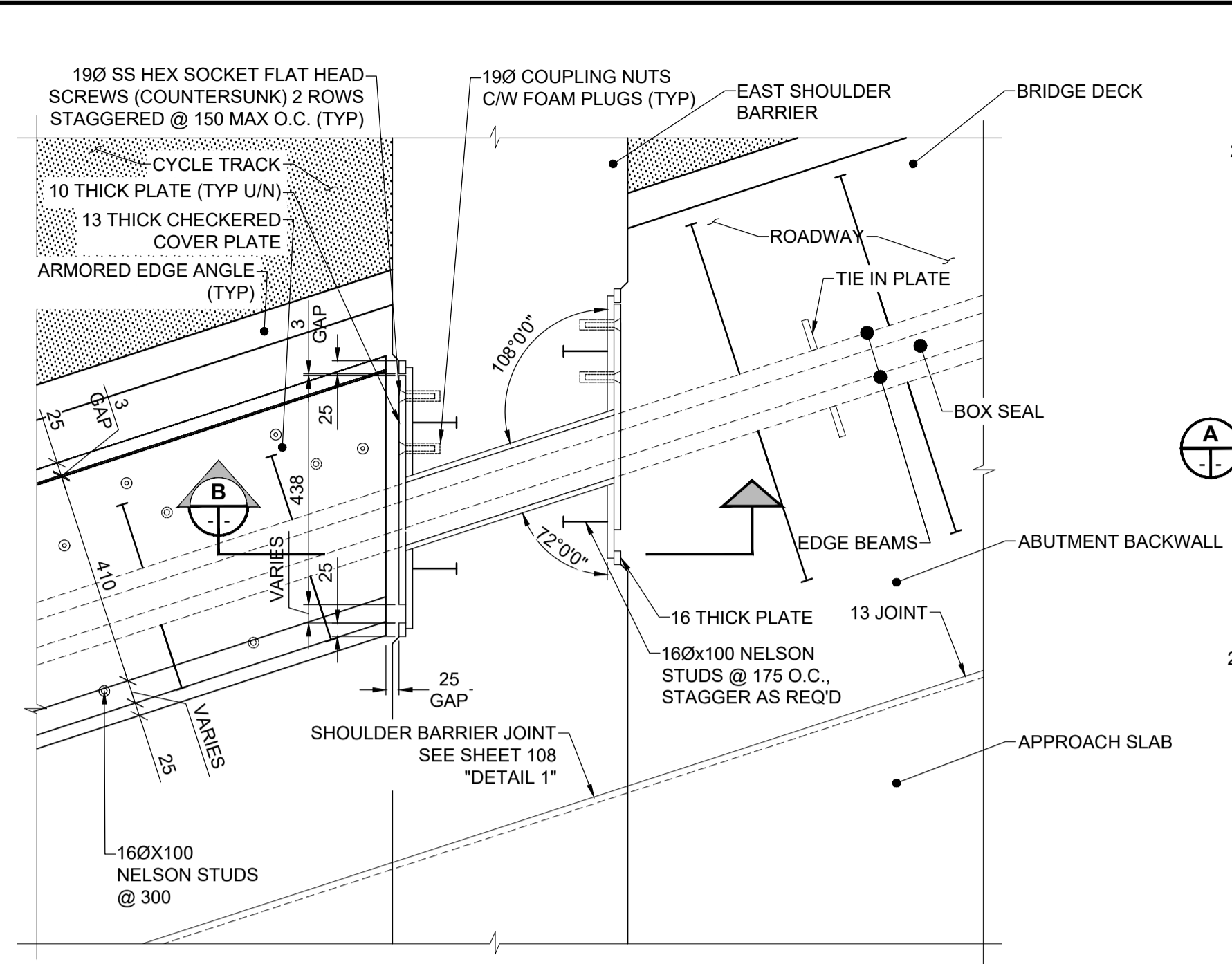
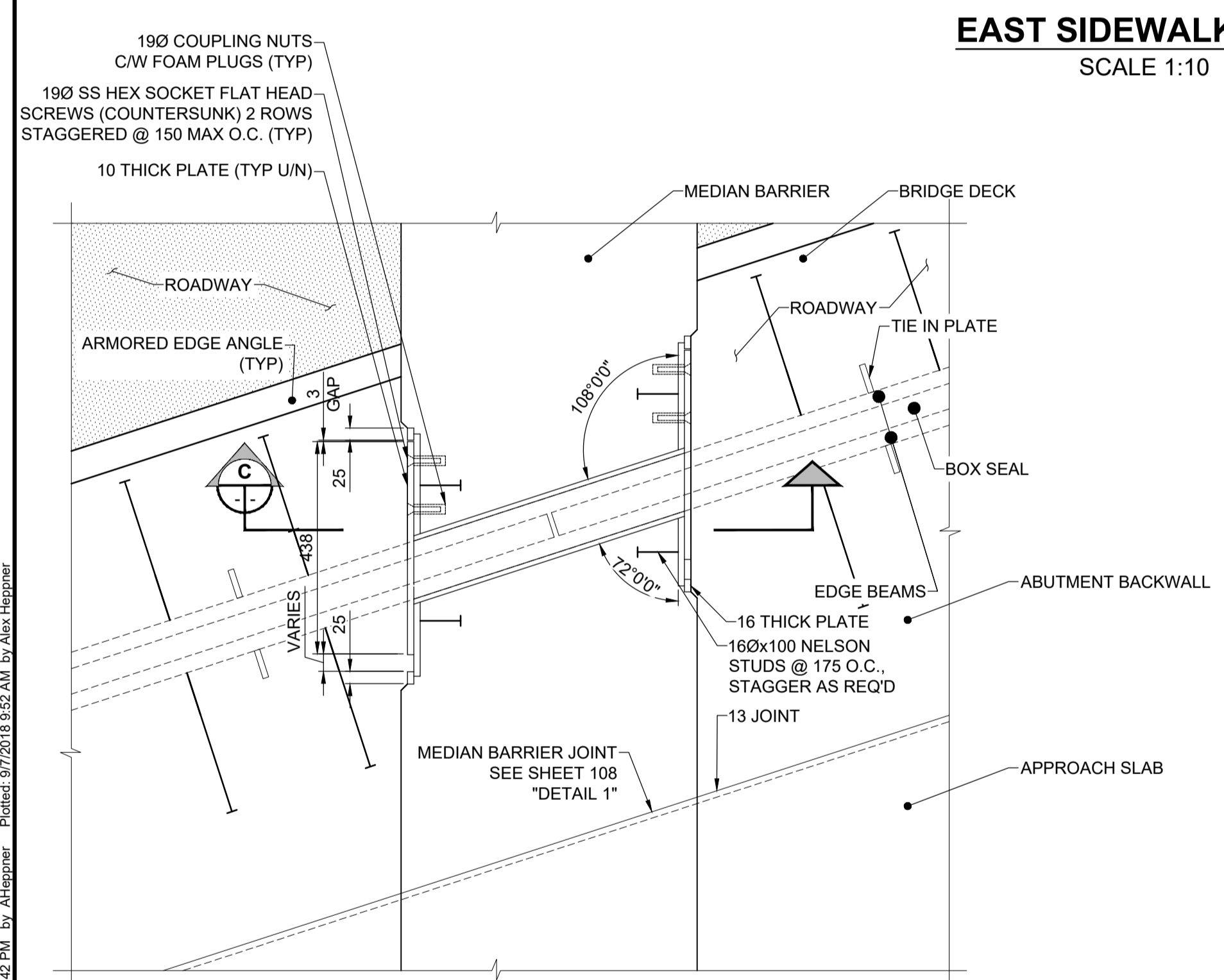


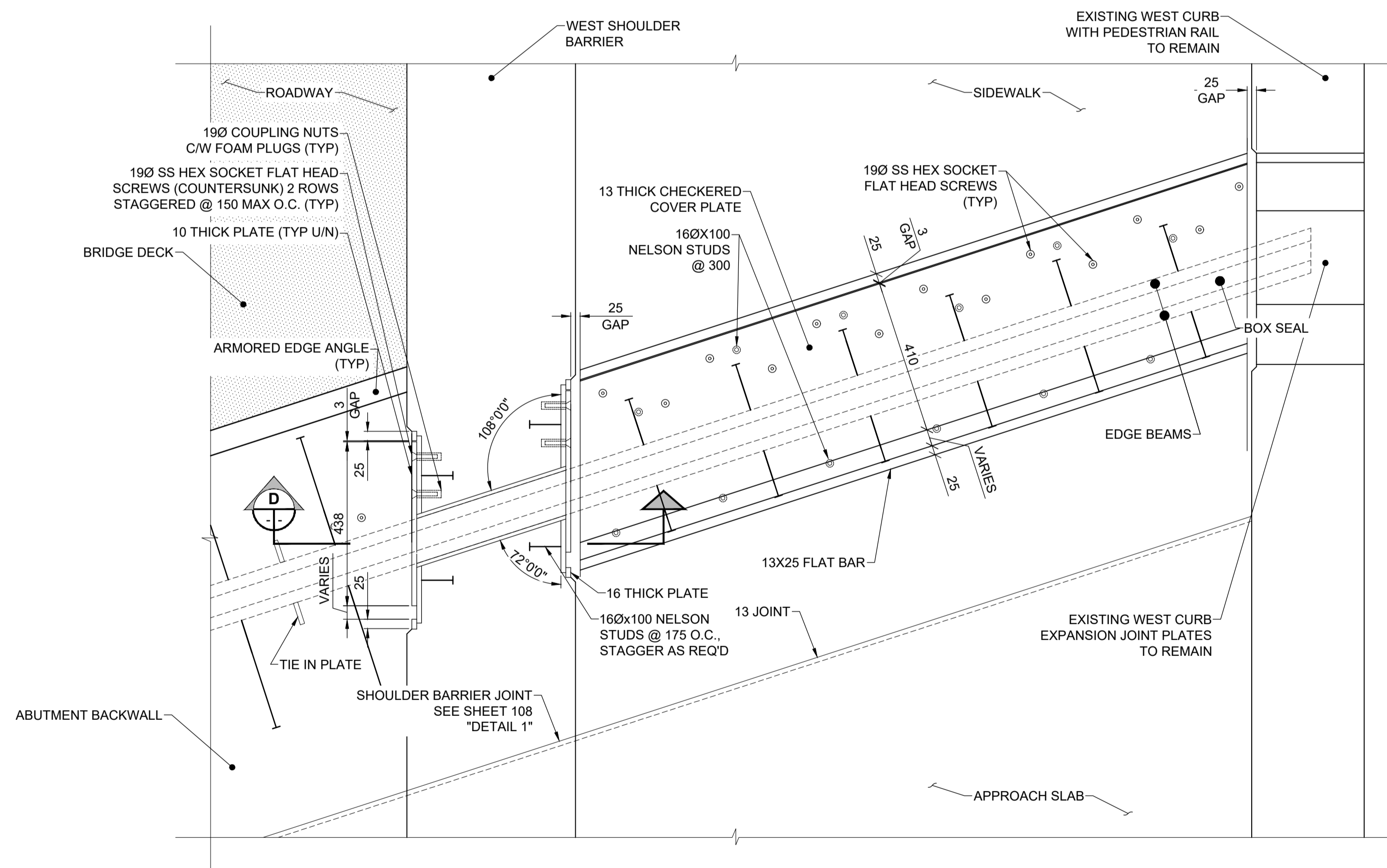
EAST SIDEWALK PLAN
SCALE 1:10



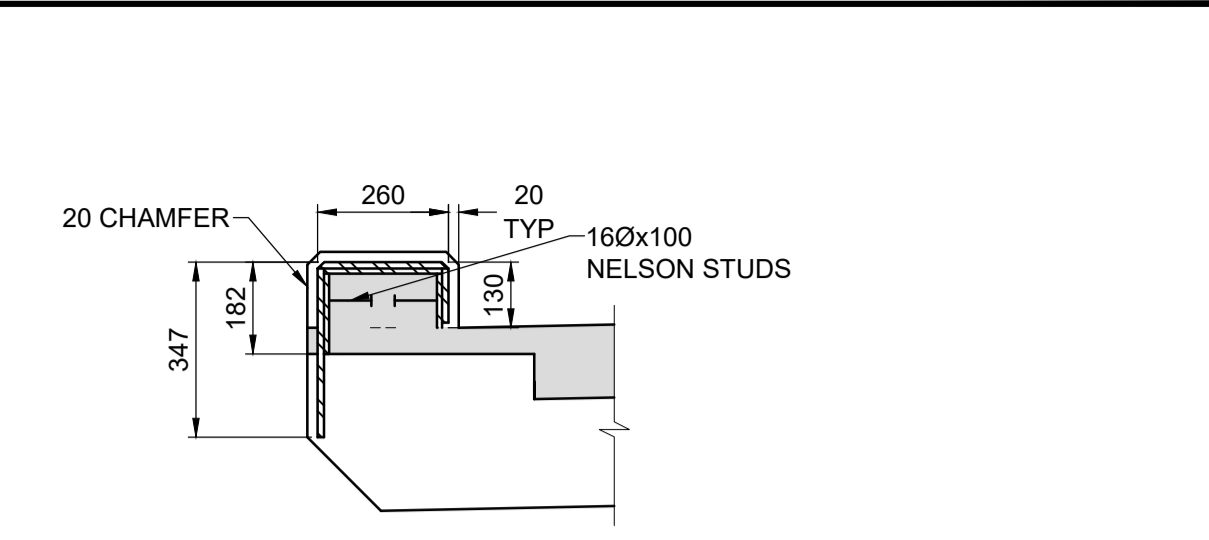
EAST SHOULDER BARRIER PLAN
SCALE 1:10



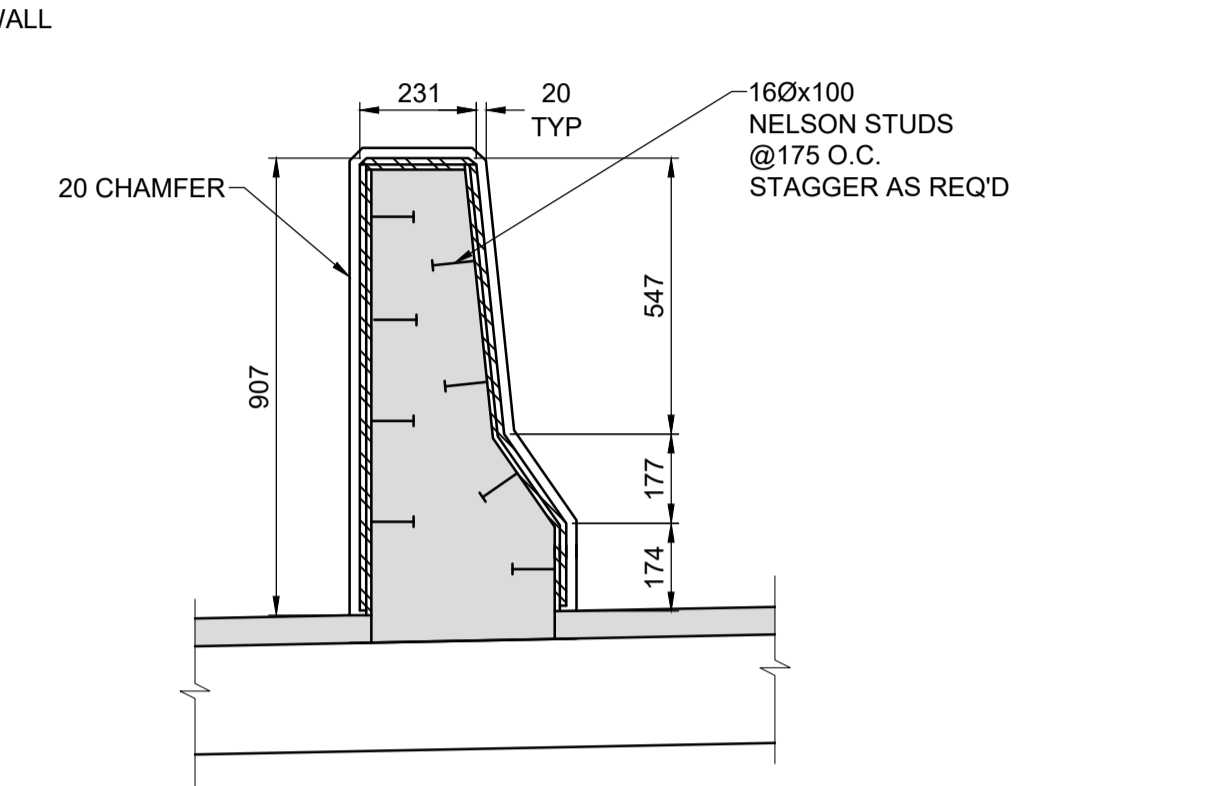
MEDIAN BARRIER PLAN
SCALE 1:10



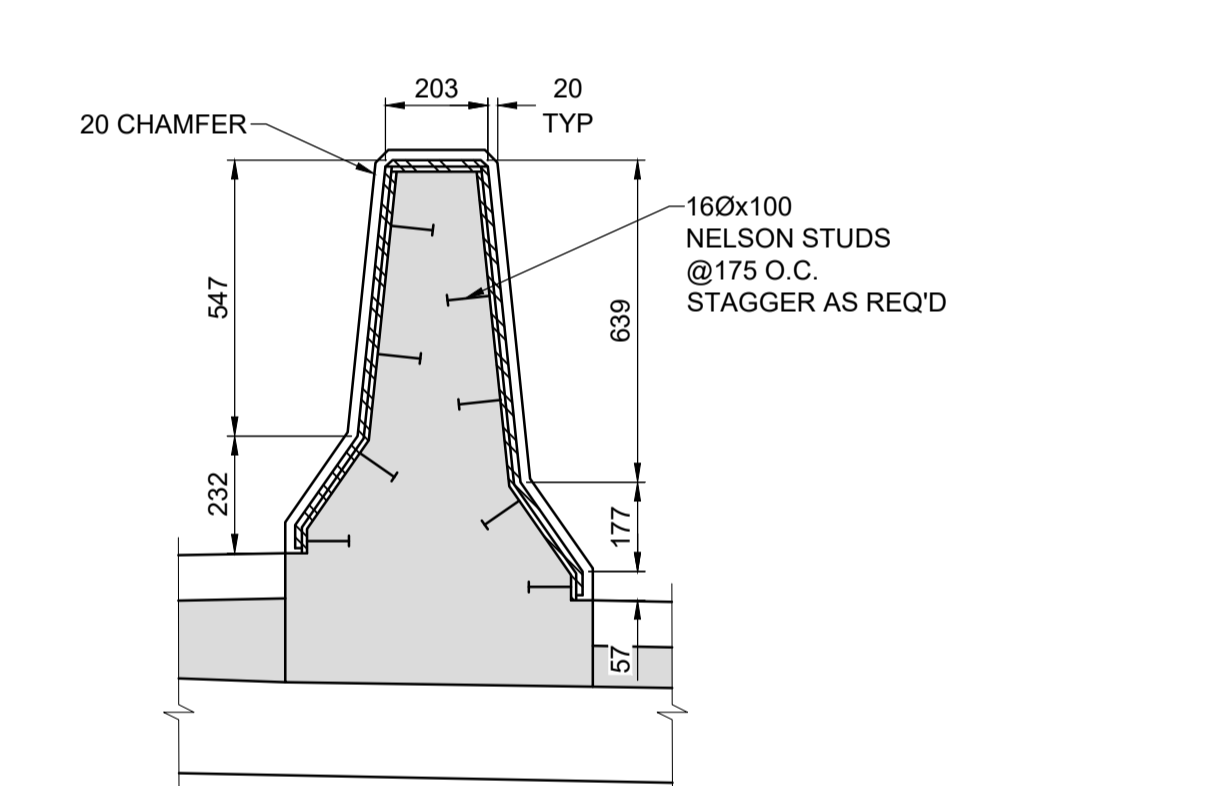
WEST SHOULDER BARRIER & SIDEWALK PLAN
SCALE 1:10



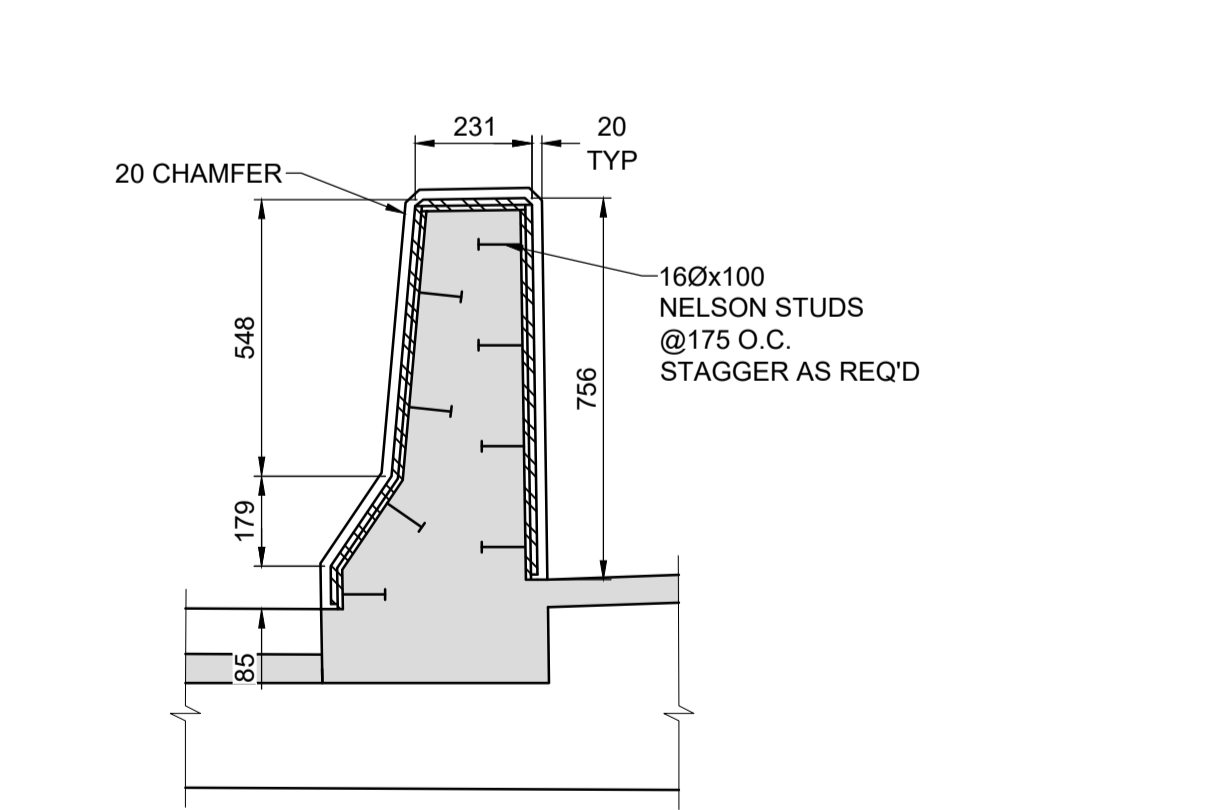
SECTION - EAST CURB
EXPANSION PLATES
SCALE: 1:15



SECTION - EAST SHOULDER BARRIER
EXPANSION PLATES
SCALE: 1:15



SECTION - MEDIAN BARRIER
EXPANSION PLATES
SCALE: 1:15



SECTION - WEST SHOULDER BARRIER
EXPANSION PLATES
SCALE: 1:15

EXPANSION JOINTS NOTES:

1. THE CONTRACTOR SHALL FIELD VERIFY CONCRETE DIMENSIONS AROUND THE EXPANSION JOINT BLOCKOUT PRIOR TO FABRICATION.
2. EXPANSION JOINT UNITS AND RELATED MATERIAL SHALL BE INSTALLED IN ACCORDANCE WITH MANUFACTURER'S RECOMMENDATIONS.
3. THE CONTRACTOR IS REQUIRED TO PROVIDE SUPPORT FOR THE EXPANSION JOINT BOXES ASSEMBLIES DURING PLACEMENT OF CONCRETE. ALL SUPPORT SYSTEMS SHALL NOT INTERFERE WITH ANY CONCRETE FINISHING OPERATIONS.
4. BLEEDING HOLES SHALL BE DRILLED INTO THE TOP OF THE STEEL EDGE BEAMS OF THE EXPANSION JOINT AND INTO THE TOP OF THE CURB COVER PLATES WHERE CONCRETE CAST DIRECTLY AGAINST. FOLLOWING CONCRETING OPERATIONS THE ENGINEER SHALL INSPECT THESE AREAS BY METHOD OF SOUNDING. ALL VOIDS SHALL BE FILLED WITH AN APPROVED NON-SHRINK GROUT.
5. EXPANSION JOINTS SHALL BE INSTALLED TO THE MANUFACTURER'S PROCEDURE FOR INSTALLATION.
6. ALL CURB AND BARRIER'S COVER PLATES SHALL RECESS 13mm FROM THE FACE OF THE CONCRETE.
7. EXPANSION JOINT FABRICATOR SHALL MAKE APPROPRIATE ADJUSTMENTS FOR CHAMFERS AND OFFSETS AS SHOWN ON DETAILS.
8. INSTALLATION TEMPERATURE SHALL BE TAKEN AS THE MEAN SHADE AIR TEMPERATURE OF THE LAST 48 HOURS PRIOR TO JOINT INSTALLATION.
9. PRIOR TO PLACING REINFORCING BARS OR CONCRETE, THE INSTALLATION SHALL BE APPROVED BY THE CONTRACT ADMINISTRATOR.
10. LOOSEN ERECTION BOLTS WITHIN 24 HOURS OF CONCRETING TO ALLOW JOINT MOVEMENT DUE TO TEMPERATURE CHANGE.
11. AFTER REMOVAL OF CLAMPING CHANNELS AND SPACER DAM, BOLT AND BLEEDER HOLES TO BE FILLED WITH APPROVED NON-SHRINK EPOXY GROUT.
12. FILED WELDING AND GALVANIZING SHALL TAKE PLACE PRIOR TO INSTALLATION OF SEALS.
13. AVOID ANY CONTACT BETWEEN REINFORCING STEEL AND GALVANIZED ANCHORS.

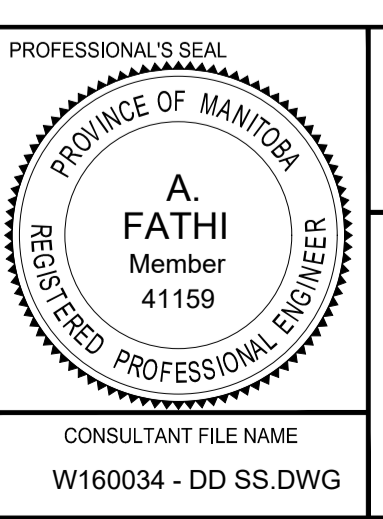


METRIC
WHOLE NUMBERS INDICATE MILLIMETRES
DECIMAL NUMBERS INDICATE METRES

LOCATION APPROVED UNDERGROUND STRUCTURES	
BM ELEV	
DATE	
NOTE: LOCATION OF UNDERGROUND STRUCTURES AS SHOWN ARE BASED ON THE BEST INFORMATION AVAILABLE BUT NO GUARANTEE IS GIVEN THAT ALL EXISTING UTILITIES ARE SHOWN OR THAT THE GIVEN LOCATIONS ARE EXACT. CONFIRMATION OF EXISTENCE AND EXACT LOCATION OF ALL SERVICES MUST BE OBTAINED FROM THE INDIVIDUAL UTILITIES BEFORE PROCEEDING WITH CONSTRUCTION.	

NO.	REVISIONS	DATE	BY
B	ISSUED FOR TENDER	18/09/04	BAP
A	ISSUED FOR 95% DESIGN REVIEW	18/08/07	BAP

DESIGNED BY	AF	CHECKED BY	YM
DRAWN BY	ALP	APPROVED BY	BE
HOR SCALE AS SHOWN		RELEASED FOR CONSTRUCTION	
VERT SCALE AS SHOWN		N/A	
DATE		DATE	



THE CITY OF WINNIPEG PUBLIC WORKS DEPARTMENT ENGINEERING DIVISION

EMPRESS STREET PROJECT OVERPASS REHABILITATION WORKS SUPERSTRUCTURE EXPANSION JOINT PLATE DETAILS

CITY DRAWING NUMBER P-3494-111
SHEET 111 OF 168
DRAWING No. 111 REV B

CONSULTANT FILE NAME: W160034 - DD SS DWG

BID OPPORTUNITY No. 602-2018

O:\Winnipeg\Proj\W160034\Design\Drawings\06 Sheets\Detailed Design\Structural\W160034 - DD SS.dwg, Last Saved: 9/16/2018 9:52 AM, by: A.Heggen, Plotted: 9/27/2018 9:52 AM, by: Alex Heggen