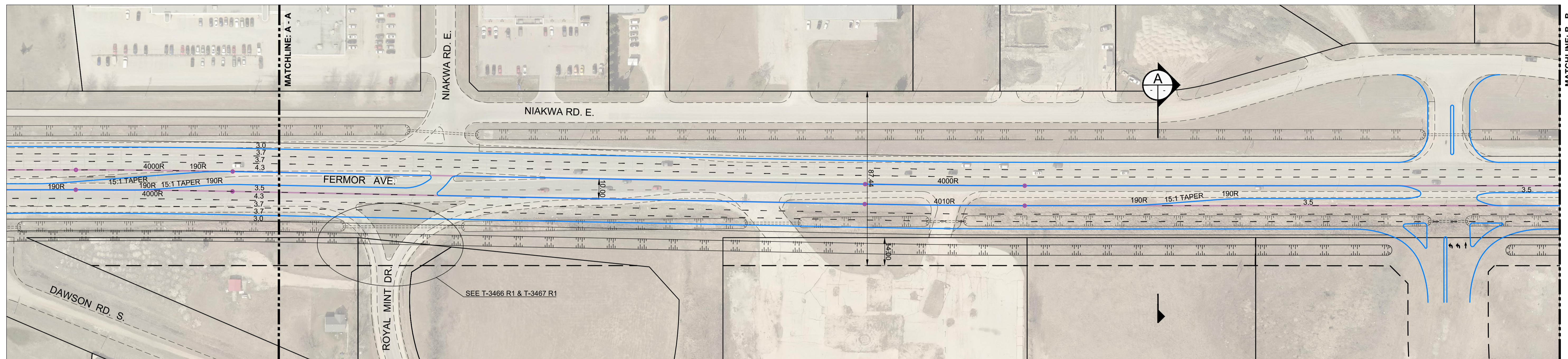
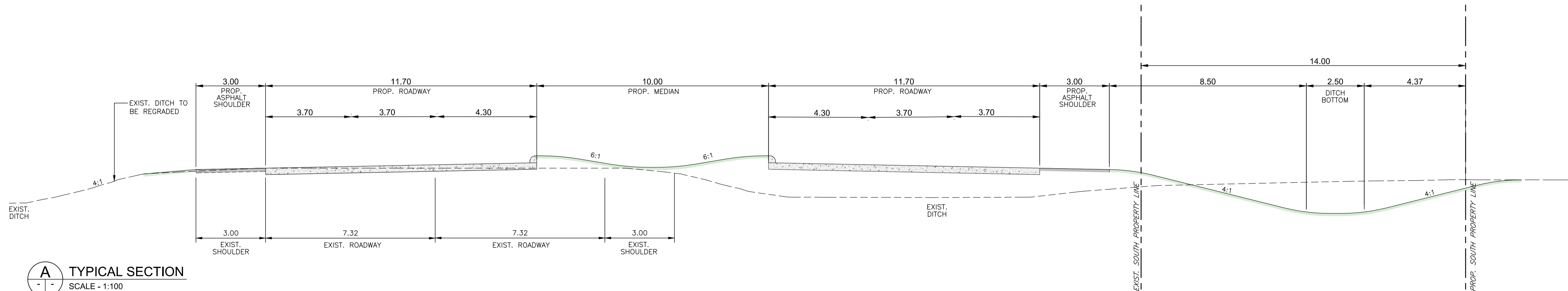


MATCHLINE: A - A



MATCHLINE: B - B



- NOTES:**
1. WB-20 IS THE DESIGN VEHICLE.
 2. ALL STORAGE LANES & DECELERATION LANES ARE 3.50m WIDE.
 3. 90km/h IS THE SPEED LIMIT ON FERMOR AVE. EAST OF LAGIMODIERE BLVD.
 4. WHOLE NUMBERS INDICATE MILLIMETRES, AND DECIMALIZED NUMBERS INDICATE METRES.
 5. NOT BASED ON SURVEY
 6. PED & CYCLE IMPROVEMENTS NOT SHOWN

A TYPICAL SECTION
SCALE - 1:100

PRELIMINARY
NOT TO BE USED FOR CONSTRUCTION

V:\TRANSPORTATION\PLANNING DRAFTING\01 - T\FINAL\T-3200\T-3239 FERMOR AVE_R2.DWG

150 WM	WATERMAIN	150 WM	---	HYDRO	---	150 WM	WATERMAIN	150 WM
+	HYDRANT	+	---	M.T.S.	---	+	HYDRANT, VALVE	+
⊙	VALVE	⊙	---	CONCRETE	---	⊙	LAND DRAINAGE SEWER	⊙
300 LDS	LAND DRAINAGE SEWER	300 LDS	---	ASPHALT	---	300 LDS	WASTE WATER SEWER	300 LDS
250 WWS	WASTE WATER SEWER	250 WWS	---	SIDEWALK	---	250 WWS	TURNING LANE	250 WWS
○	MANHOLE	●	---	PROPERTY LINE	---	○	WEST GUTTER	---
□	CATCH BASIN	■	---	SURVEY BAR	---	○	EAST GUTTER	---
▽	CURB INLET	▽	---	DITCH	---	◇	NORTH OR WEST P L	---
+	JUNCTIONS	+	---	ELEVATION	(32.231)	◇	SOUTH OR EAST P L	---
+	CULVERT	+	---	LIGHT STANDARD	●	△	WEST MEDIAN GUTTER	---
+	GAS	+	---	---	---	▽	EAST MEDIAN GUTTER	---
EXISTING	LEGEND-PLAN	PROPOSED	EXISTING	LEGEND-PLAN	PROPOSED	EXISTING	LEGEND-PROFILE	PROPOSED

LOCATION APPROVED UNDERGROUND STRUCTURES

SUPV. U/G STRUCTURES COMMITTEE DATE

NOTE:
LOCATION OF UNDERGROUND STRUCTURES AS SHOWN ARE BASED ON THE BEST INFORMATION AVAILABLE BUT NO GUARANTEE IS GIVEN THAT ALL EXISTING UTILITIES ARE SHOWN OR THAT THE GIVEN LOCATIONS ARE EXACT. CONFIRMATION OF EXISTENCE AND EXACT LOCATION OF ALL SERVICES MUST BE OBTAINED FROM THE INDIVIDUAL UTILITIES BEFORE PROCEEDING WITH CONSTRUCTION.

B.M. ELEV.			
DESIGNED BY	SS	CHECKED BY	
DRAWN BY	RM	APPROVED BY	
HOR. SCALE:	1:1000	RELEASED FOR CONSTRUCTION	
VERTICAL:		DATE	
1	INTERSECTION ADDITION	Jun. 11/18	MLA
NO.	REVISIONS	DATE	BY
		2016-10-06	

CONSULTANT DRAWING NO.

THE CITY OF WINNIPEG
PUBLIC WORKS DEPARTMENT
TRANSPORTATION DIVISION

FERMOR AVE.
BETWEEN APPROX. 494.0m WEST OF THE WEST PROPERTY LINE OF LAGIMODIERE BLVD. AND APPROX. 179.0m EAST OF THE WEST PROPERTY LINE OF PLESSIS RD.
ROADWAY IMPROVEMENT

SHEET 1 OF 2
CAD FILE DRAWING NUMBER TTT-3239-R2.dwg
CITY DRAWING NUMBER T-3239 R2