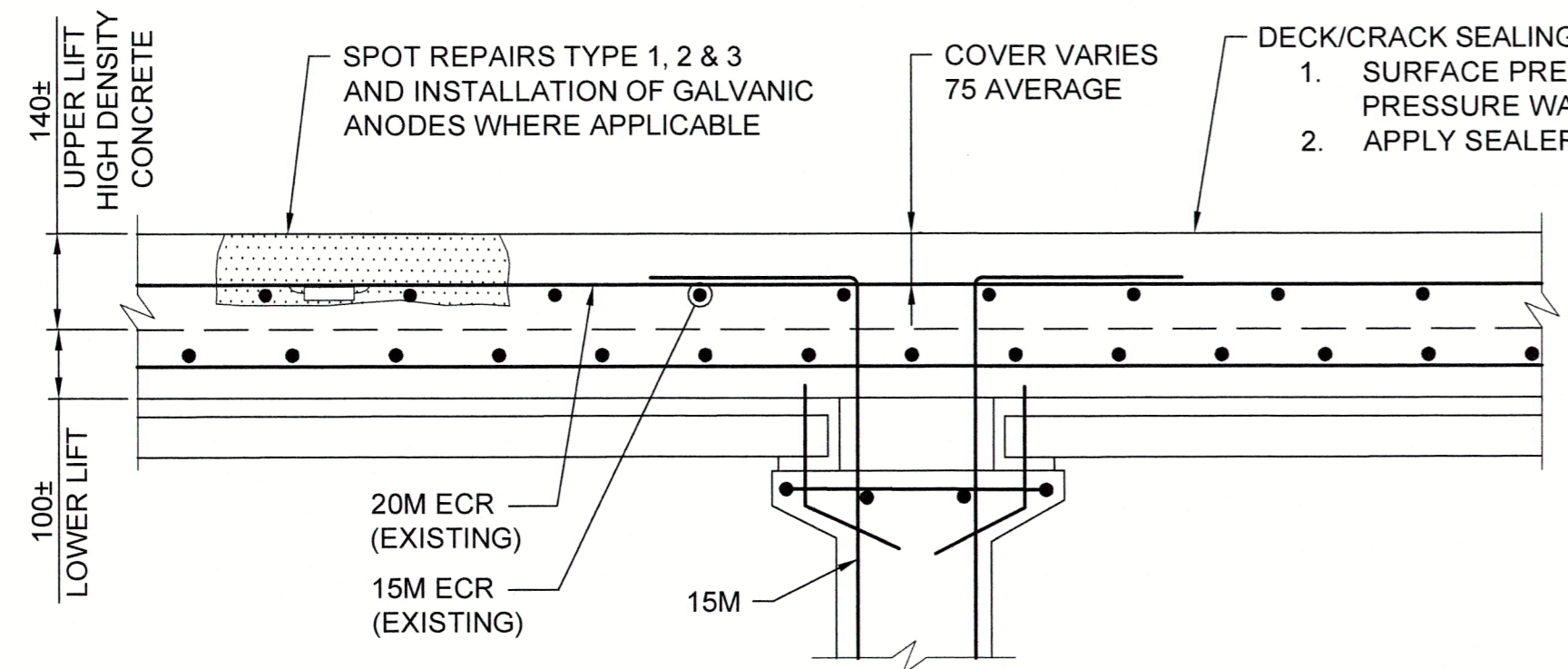
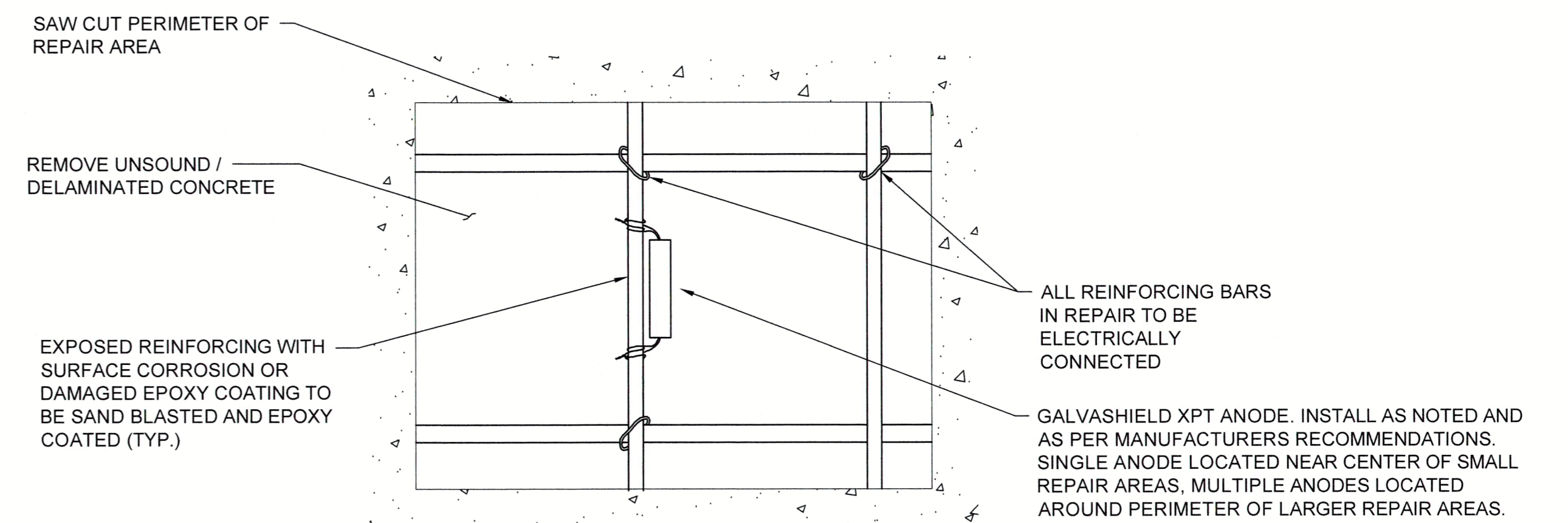


TYPICAL CROSS SECTION

SCALE 1:25



1
DETAIL
SCALE 1:10



PLAN VIEW
TYPE 2 & 3
N.T.S.

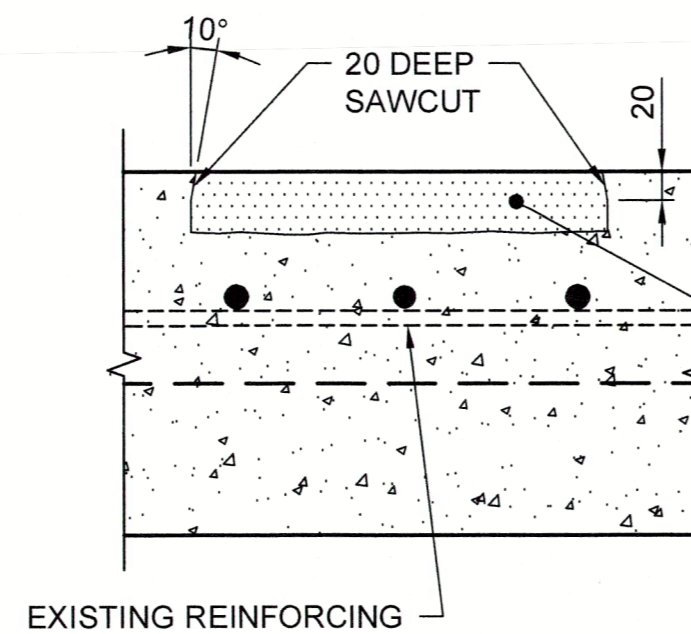
GUIDELINE FOR ANODE PLACEMENT	
REPAIR AREA (mm)	MINIMUM NUMBER OF ANODES
300 X 300	1
350 X 350	2
400 X 400	3
> 400 X 400	AT MAX. 500 SPACING AROUND PERIMETER
ALL SPOT REPAIR LOCATIONS	AT EACH BAR ALONG EXISTING CRACK

FINAL ANODE LAYOUT TO BE AS DIRECTED BY CONTRACT ADMINISTRATOR

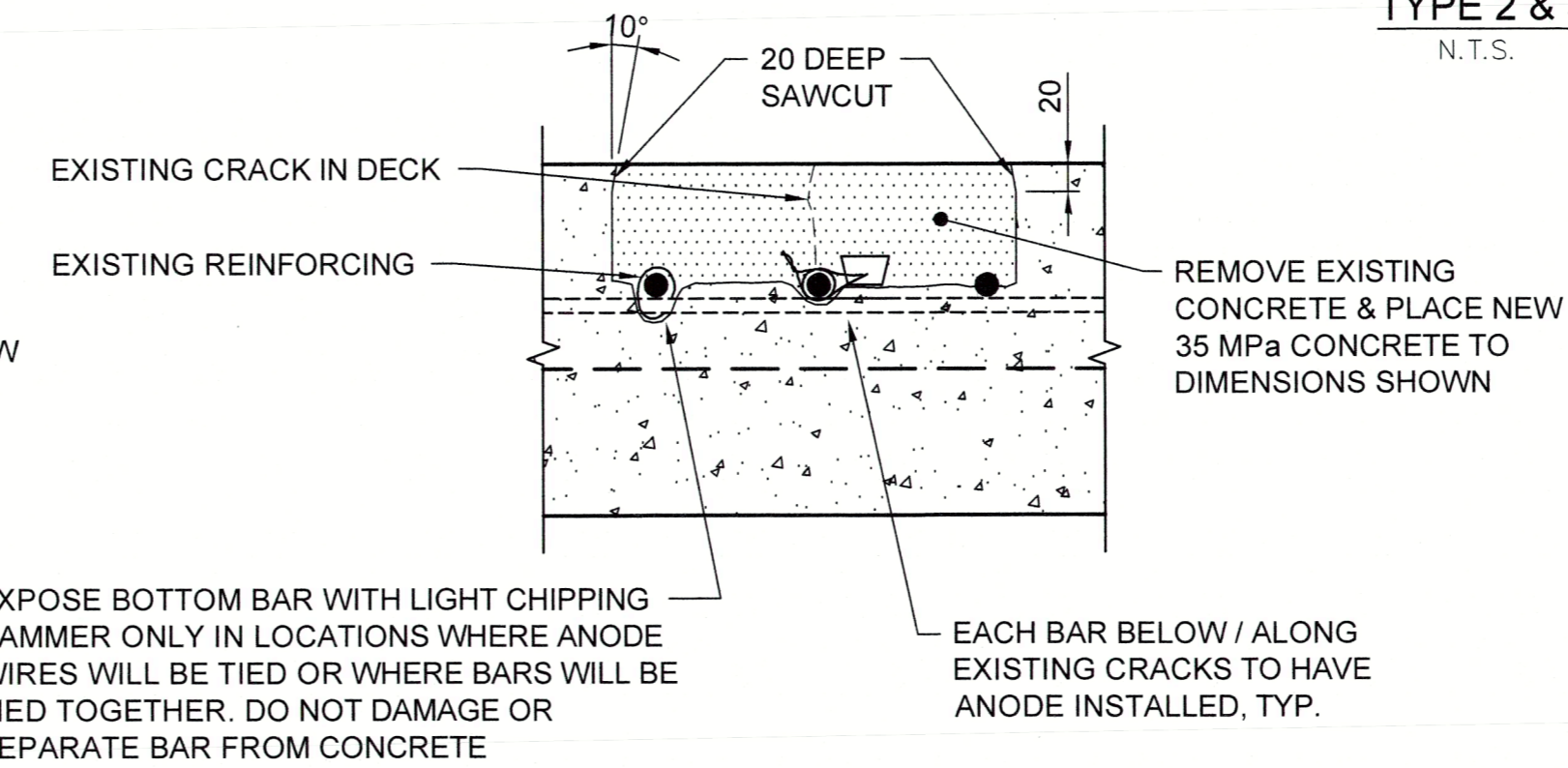
NOTES:

- ACTUAL REPAIR AREAS WILL BE MARKED OUT BY CONTRACT ADMINISTRATOR.

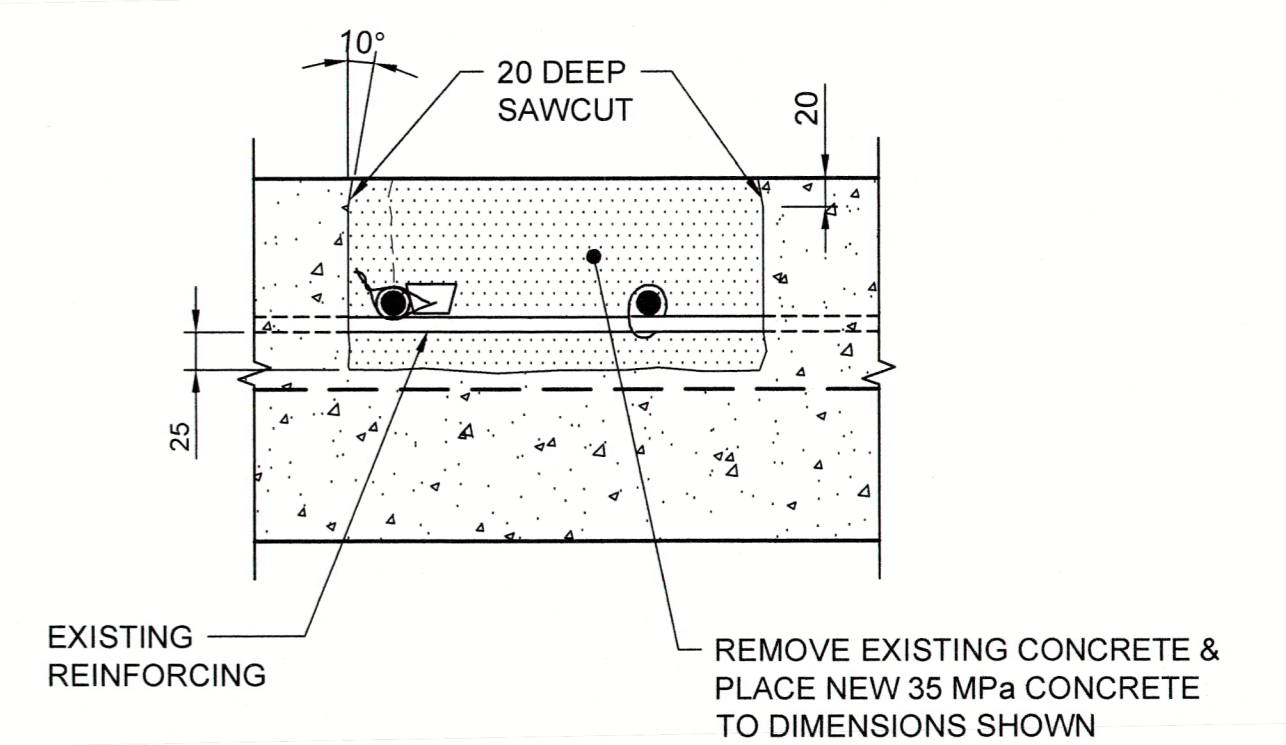
ECR - EPOXY COATED REINFORCING



TYPE 1 REPAIR
SURFACE
(25 - 49 mm DEEP)



TYPE 2 REPAIR
PARTIAL DEPTH
(50 - 74 mm DEEP TO
MID-HEIGHT OF TOP BARS)



TYPE 3 REPAIR
FULL DEPTH
(75 - 140 mm DEEP)

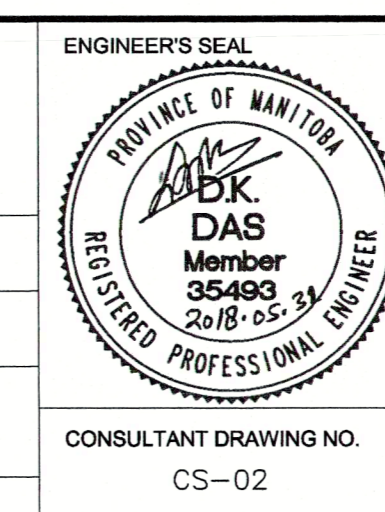
TYPICAL DECK REPAIR DETAILS

SCALE N.T.S.

METRIC
WHOLE NUMBERS INDICATE MILLIMETRES
DECIMALIZED NUMBERS INDICATE METRES



B.M. ELEV.					
AECOM		DESIGNED BY	DKD	CHECKED BY	EBL
		DRAWN BY	KAM	APPROVED BY	EBL
		HOR. SCALE:	1:150	RELEASED FOR CONSTRUCTION BY	
		VERTICAL:		DATE	May 21, 2019
0 ISSUED FOR TENDER	18/05/28	EBL			
NO. REVISIONS	DATE	BY	DATE	2018/05/25	DATE



THE CITY OF WINNIPEG
PUBLIC WORKS DEPARTMENT
ENGINEERING DIVISION

PEMBINA HIGHWAY AT BISHOP GRANDIN OVERPASS
2018 BRIDGE DECK REPAIRS

CITY DRAWING NUMBER
B215-18-03
SHEET 3 OF 3

DECK REPAIR DETAILS

CONSULTANT DRAWING NO.
CS-02