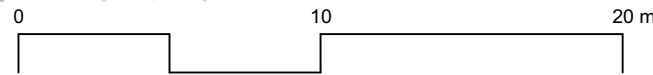
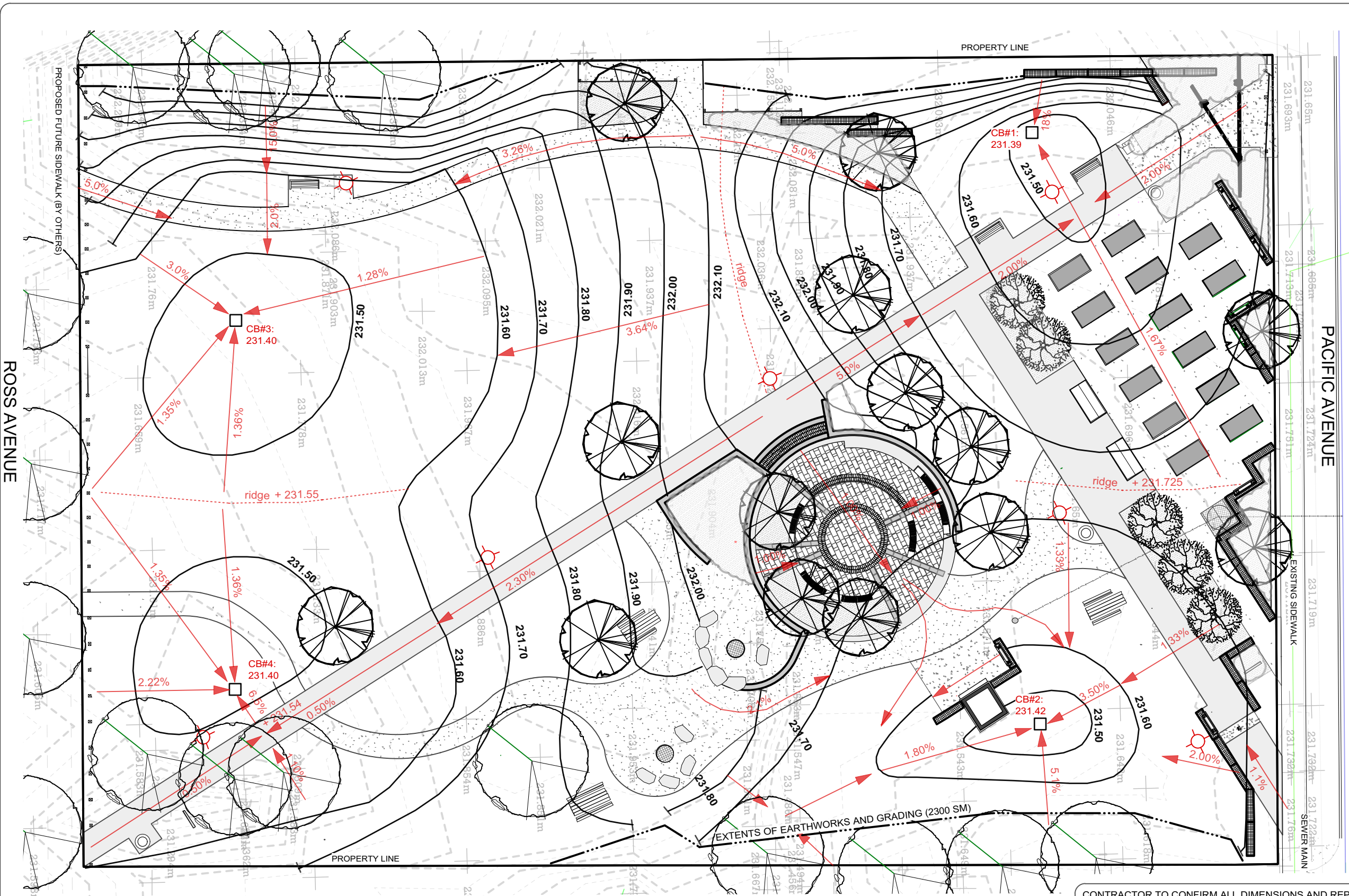


Drawing Corresponds with Civil Engineer Drawings C-501 and C-101

- 232.000 Existing Spot Elevation
- 232.00 Existing Contour
- 232.00 Proposed Contour
- 1.0% Proposed Slope
- Earthworks and Grading Extents
- Proposed CB (x4)
- + 232.000 Proposed Spot Elevation
- Proposed Ridge



CONTRACTOR TO CONFIRM ALL DIMENSIONS AND REPORT ANY DISCREPANCIES TO CONTRACT ADMINISTRATOR PRIOR TO CONSTRUCTION. LOCATION OF UNDERGROUND STRUCTURES AS SHOWN ARE BASED ON THE BEST INFORMATION AVAILABLE BUT NO GUARANTEE IS GIVEN THAT ALL EXISTING UTILITIES ARE SHOWN OR THAT THE GIVEN LOCATIONS ARE EXACT. CONFIRMATION OF EXISTENCE AND EXACT LOCATION OF ALL SERVICES MUST BE OBTAINED FROM THE INDIVIDUAL UTILITIES BEFORE PROCEEDING WITH CONSTRUCTION.



THE CITY OF WINNIPEG
 Planning, Property and Development Department
 Planning and Land Use Division
 Unit 15 - 30 Fort Street, Winnipeg, MB, (R3C 4X5)

DESIGNED BY	IL/IM	CHECKED BY	
DRAWN BY	IL/IM	APPROVED BY	
HORIZ. SCALE			
VERT. SCALE	1:250		
DATE	May 2018		

MANAGER, PARK AND OPEN SPACES	DATE
MANAGER, PLANNING AND LAND USE DIVISION	DATE

DRAWING TITLE	DRAWING NO.
Gord Dong Park REDEVELOPMENT Grading Plan	G.043-4
SITE ADDRESS	BID OPPORTUNITY NO.
348 Pacific Avenue	54-2018