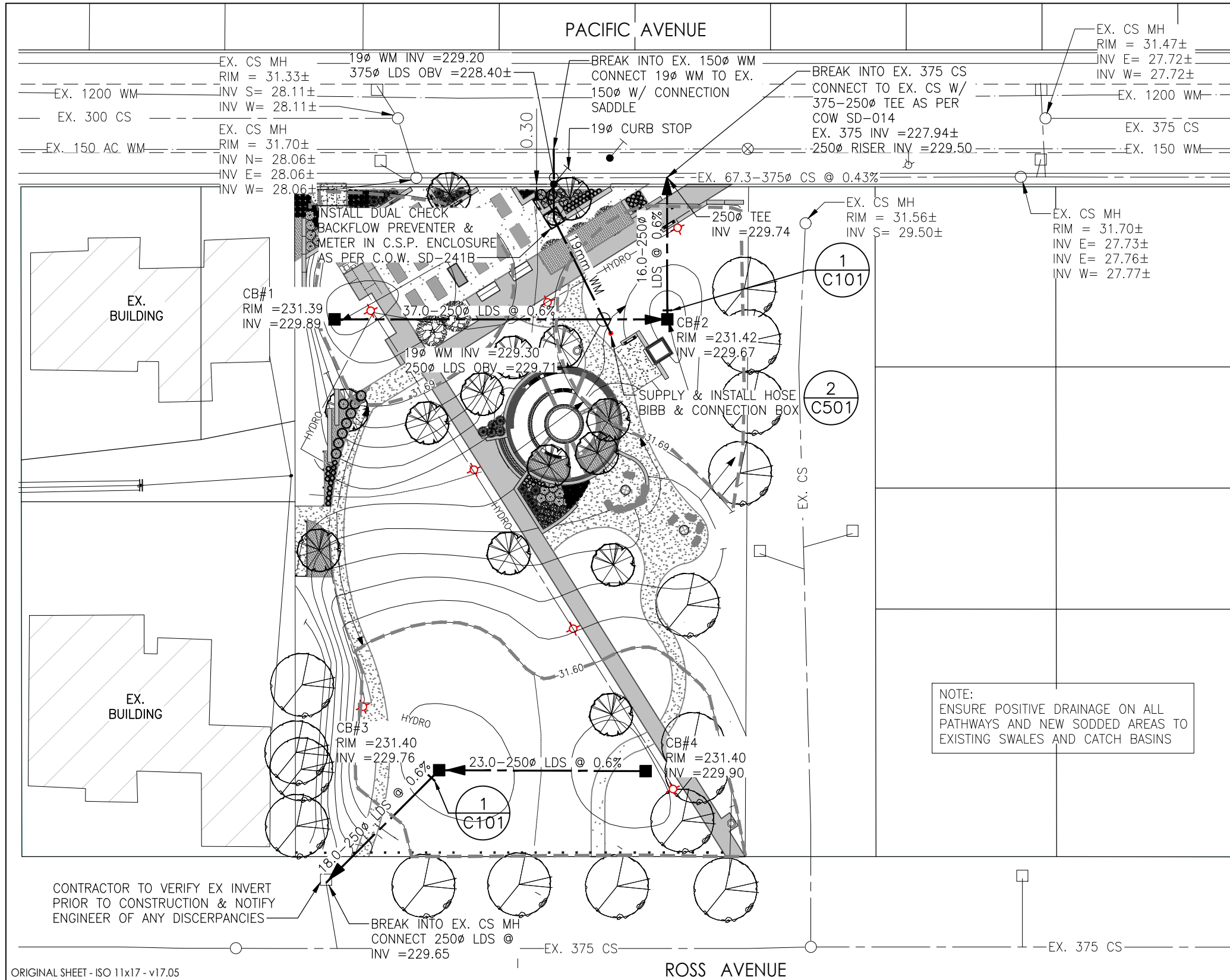
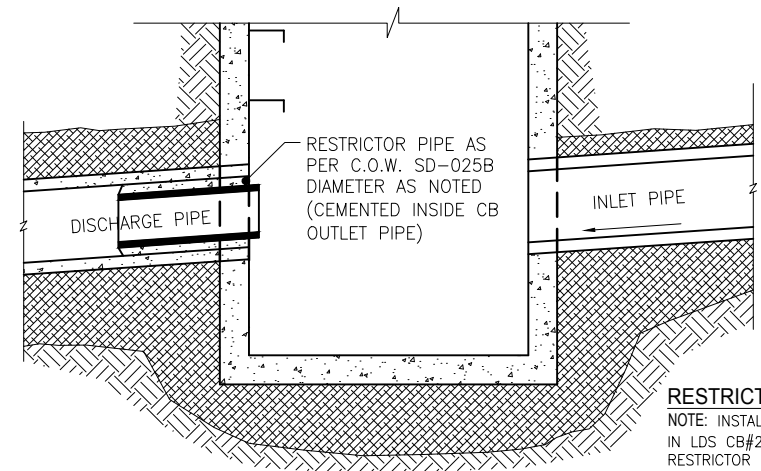


V:\112\active\11217600\0300.drawing\0302_sheet_files\02_civil\17600c-101-814.dwg 11x7h
2018/04/27 3:52 PM By: Romaracas, Kesh



EXISTING	LEGEND-PLAN	PROPOSED
150 WM	WATERMAIN	150 WM
⊙	HYDRANT	⊙
⊗	VALVE	⊗
300 LDS	LAND DRAINAGE SEWER	300 LDS
250 WWS	WASTE WATER SEWER	250 WWS
○	MANHOLE	●
□	CATCH BASIN	■
▽	CURB INLET	▽
+	JUNCTIONS	+
— — — — —	CULVERT	— — — — —
— · — · — · —	GAS	— · — · — · —
— · — · — · —	HYDRO	— · — · — · —
— · — · — · —	M.T.S.	— · — · — · —
— — — — —	CONCRETE	— — — — —
— — — — —	ASPHALT	— — — — —
— — — — —	SIDEWALK	— — — — —
— — — — —	PROPERTY LINE	— — — — —
+	SURVEY BAR	+
▨	BUILDING	▨
▨	LIMESTONE PATHWAY	▨
▨	ASPHALT PATHWAY	▨
⊙	LIGHT POLE	⊙
— — — — —	CENTER LINE OF SWALE	— — — — —
— — — — —	25 YR. PONDING LIMITS	— — — — —
●	CURB STOP	●

NOTE:
ENSURE POSITIVE DRAINAGE ON ALL
PATHWAYS AND NEW SODDED AREAS TO
EXISTING SWALES AND CATCH BASINS



1 RESTRICTOR DETAIL
C101 N.T.S.

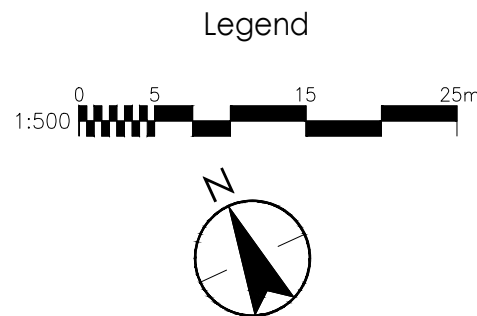
RESTRICTOR LOCATION :
NOTE: INSTALL 250mm RESTRICTOR
IN LDS CB#2 & CB#3.
RESTRICTOR MUST NOT BE
REMOVED AFTER INSTALLATION.
REFER TO STORM WATER DISCHARGE
CRITERIA TABLE ON C-501 FOR
DETAILS.

ORIGINAL SHEET - ISO 11x17 - v17.05

2018-04-27
11217600



Stantec Consulting Ltd.
Suite 500, 311 Portage Avenue
Winnipeg MB Canada R3B 2B9
Tel. 204.489.5900 Fax. 204.453.9012
www.stantec.com



Notes



METRIC

WHOLE NUMBERS INDICATE MILLIMETRES
DECIMALIZED NUMBERS INDICATE METRES

WARNING

IF POWER EQUIPMENT OR EXPLOSIVES ARE TO BE USED
FOR EXCAVATION ON THIS PROJECT THE CONTRACTOR
MUST:
1) NOTIFY THE GAS COMPANY OF THE PROPOSED LOCATION
OF EXCAVATION.
2) TAKE PRECAUTION TO AVOID DAMAGE TO GAS COMPANY
INSTALLATIONS.
SEE PROVINCIAL REGULATION 140/92 FOR DETAILS

Client/Project
THE CITY OF WINNIPEG - GORD DONG PARK
348 PACIFIC AVENUE, WINNIPEG MB

Figure No.
C-101

Title
SITE PLAN AND DETAIL