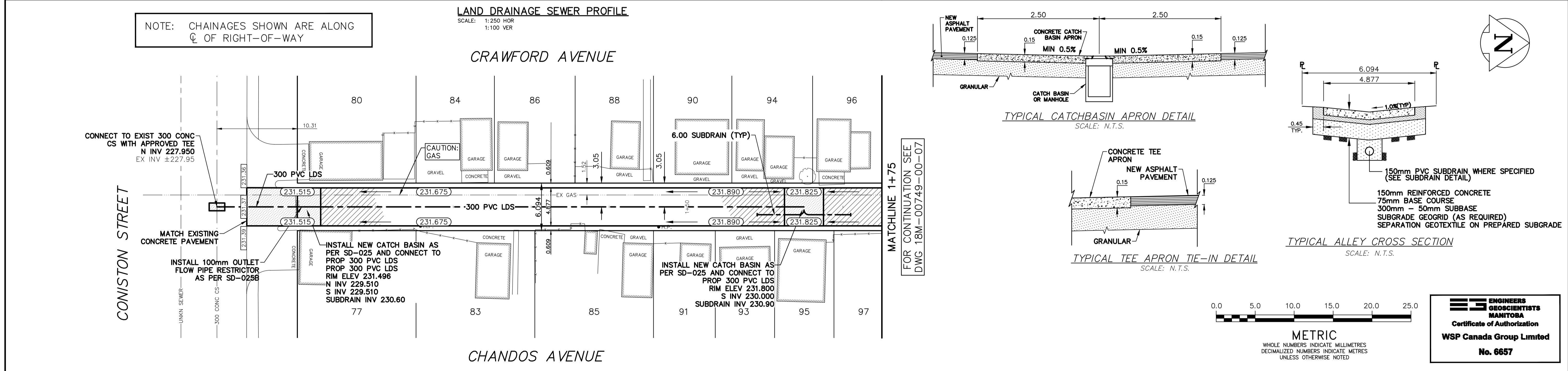
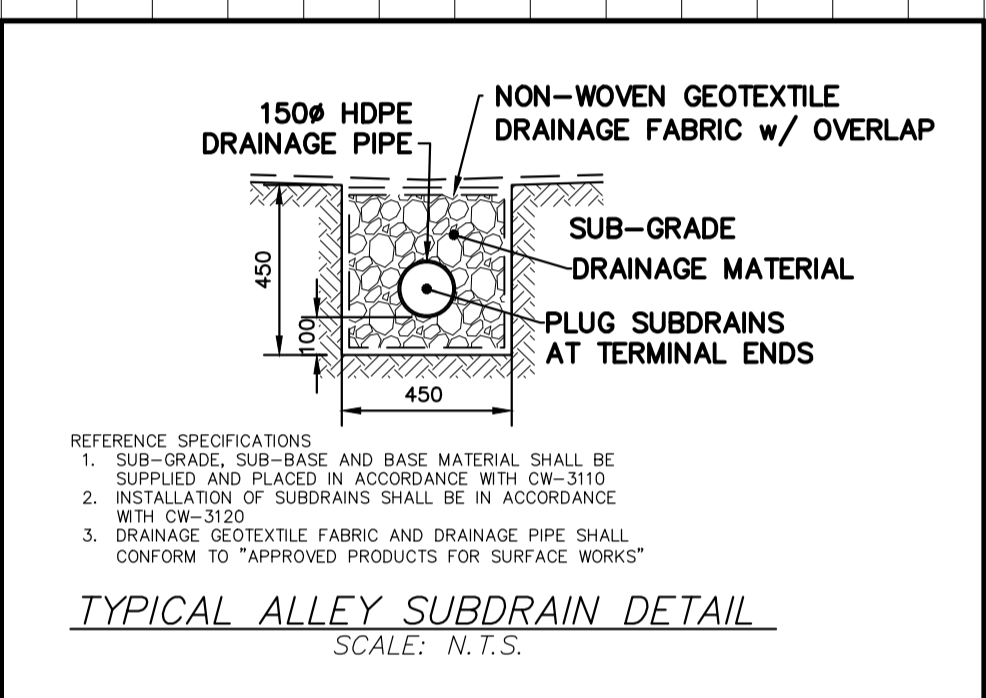
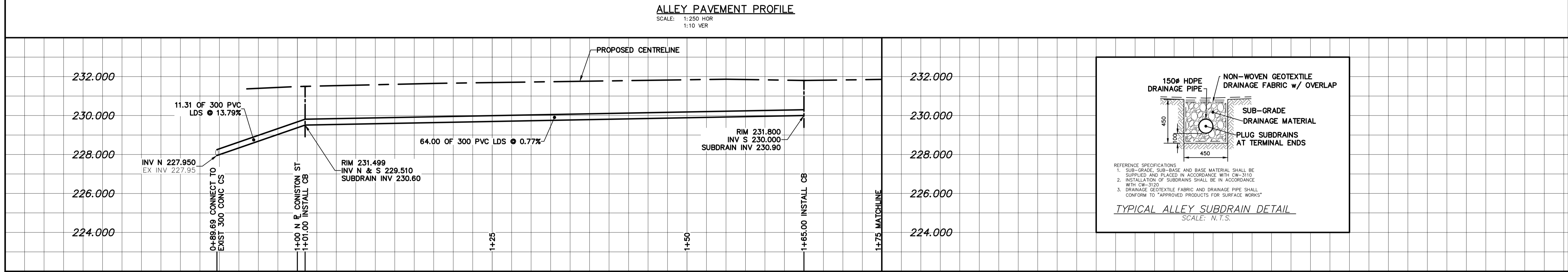


- NOTES:**
- ALL WORK AND MATERIALS TO BE IN ACCORDANCE WITH THE LATEST REVISION OF THE CITY OF WINNIPEG STANDARD CONSTRUCTION SPECIFICATION.
 - CONTRACTOR TO CONFIRM THE LOCATION OF ALL UTILITIES/SERVICES IN THE FIELD PRIOR TO CONSTRUCTION.
 - CONTRACTOR TO AVOID DAMAGE TO EXISTING TREES WITHIN THE LIMITS OF THE ALLEY RIGHT OF WAY AS OUTLINED IN THE BID OPPORTUNITY.
 - TREE AND SHRUB REMOVALS AS DIRECTED BY THE CONTRACT ADMINISTRATOR.
 - HYDRO POLES AND ANCHORS REQUIRING TEMPORARY SUPPORT TO BE DONE AT THE EXPENSE OF THE CONTRACTOR AS REQUIRED.
 - WHERE UNSTABLE SUB-GRADES ARE ENCOUNTERED, ADDITIONAL EXCAVATION/SUB-BASE AND INSTALLATION OF GEOTEXTILE TO BE DETERMINED BY THE CONTRACT ADMINISTRATOR AND CONSTRUCTED IN ACCORDANCE W/ CW-3110.
 - ISOLATE EXISTING HYDRO POLES AS PER SD-228C.
 - RENEW CURB AND SIDEWALK AS DIRECTED BY THE CONTRACT ADMINISTRATOR.
 - ALL EXISTING PRIVATE APPROACHES TO BE RENEWED AS DIRECTED BY THE CONTRACT ADMINISTRATOR.
 - ADJUSTMENTS TO PROPOSED CROSSFALL, WHERE REQUIRED, ARE TO BE DETERMINED BY THE CONTRACT ADMINISTRATOR TO SUIT EXISTING DRIVEWAYS, APPROACHES, ETC.
 - ALL BOULEVARD RESTORATION TO BE SODDED UNLESS OTHERWISE NOTED.
 - REMOVE, ADJUST, AND SUPPLY PRECAST SIDEWALK BLOCKS AS DIRECTED BY THE CONTRACT ADMINISTRATOR.
 - ALL LAND DRAINAGE SEWER EXCAVATIONS TO BE JETTED, FLOODED, AND TAMPED AS PER CW2030-R7.



WATERMAIN	HYDRANT	VALVE	CURB STOP	LAND DRAINAGE SEWER	WASTE WATER SEWER	CB LEAD	MANHOLE	CATCH BASIN	GAS	HYDRO
CONCRETE/ASPHALT	SIDEWALK	CURB RAMP	ELEVATIONS	PROPERTY LINE	SURVEY BAR	HYDRO POLE	STREET LIGHT	JOINTS	ASPHALT REPAIR	
EXISTING	LEGEND - PLAN	PROPOSED	EXISTING	LEGEND - PLAN	PROPOSED	EXISTING	LEGEND - PROFILE	PROPOSED	EXISTING	LEGEND - PROFILE

LOCATION APPROVED UNDERGROUND STRUCTURES	B.M. ELEV.	DATE	BY
SUPV. U/G STRUCTURES COMMITTEE			
NOTE: LOCATION OF UNDERGROUND STRUCTURES AS SHOWN ARE BASED ON THE BEST INFORMATION AVAILABLE BUT NO GUARANTEE IS GIVEN THAT ALL EXISTING UTILITIES ARE SHOWN OR THAT THE GIVEN LOCATIONS ARE EXACT. CONFIRMATION OF EXISTENCE AND EXACT LOCATION OF ALL SERVICES MUST BE OBTAINED FROM THE INDIVIDUAL UTILITIES BEFORE PROCEEDING WITH CONSTRUCTION.			
NO			

DESIGNED BY	R.H.	CHECKED BY	K.G.
DRAWN BY	R.H.	APPROVED BY	S.M.
HOR. SCALE:	1:250	RELEASED FOR CONSTRUCTION	
VERT. SCALE:	AS SHOWN		
DATE	MAY 2018		

NOT FOR CONSTRUCTION

CONSULTANT DRAWING NO. 18M-00749-00-06

WSP

111-83 Lombard Avenue
Winnipeg, Manitoba
R3B 3B1 Canada
Phone: 204-943-3178
Fax: 204-943-4948
wsp.com

THE CITY OF WINNIPEG
PUBLIC WORKS DEPARTMENT

2018 LOCAL IMPROVEMENTS
CRAWFORD AV./CHANDOS AV. ALLEY
FROM CONISTON ST. TO STA. AT 1+75

CITY DRAWING NO. LD-----
SHEET 6 OF 12
BID OPPORTUNITY 530-2018

APSHALT RECONSTRUCTION

ENGINEERS GEOSCIENTISTS MANITOBA
Certificate of Authorization
WSP Canada Group Limited
No. 6657

WSP Canada Group Limited
No. 6657

WSP Canada Group Limited
No. 6657

WSP Canada Group Limited
No. 6657