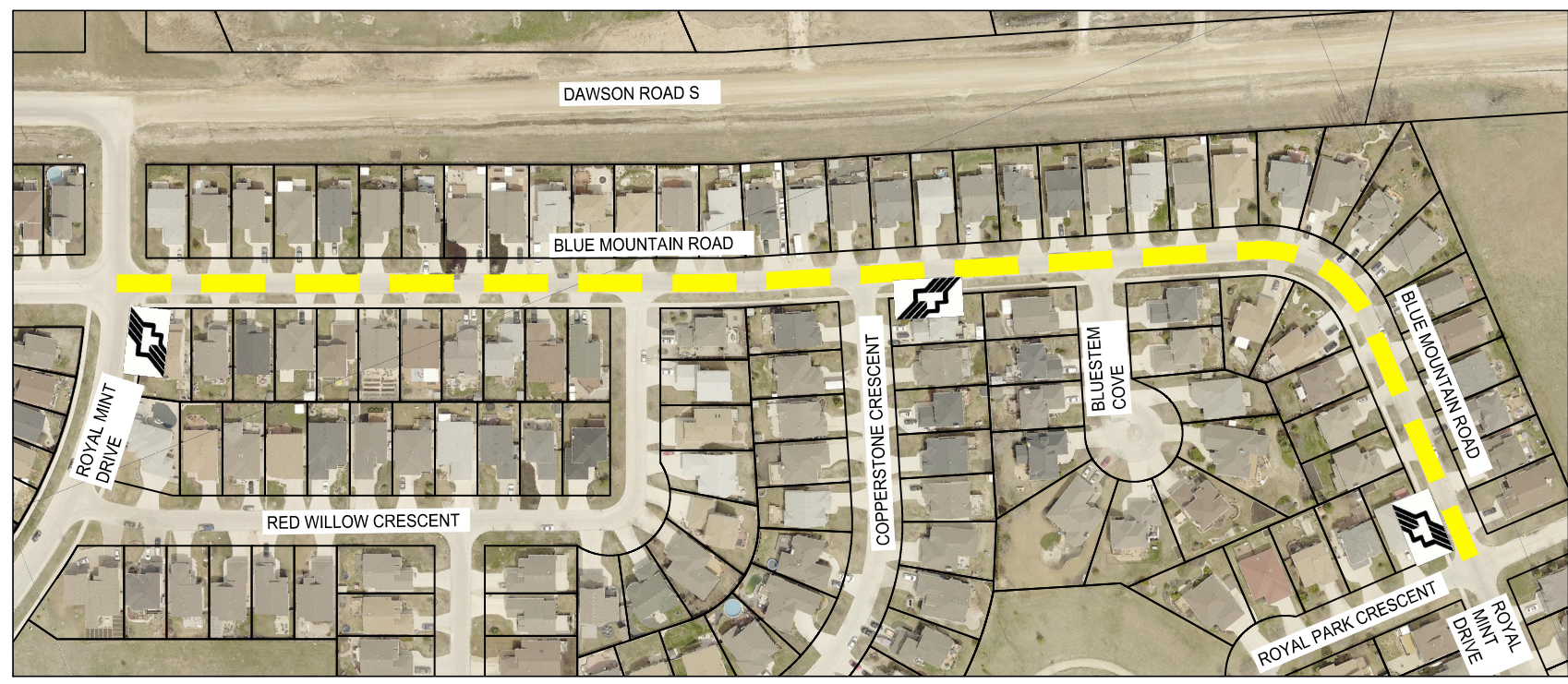


**ISLAND SHORE BOULEVARD - ISLAND LAKES DRIVE TO  
DE LA SEIGNEURIE BOULEVARD**  
SCALE 1:5000






**BLUE MOUNTAIN ROAD - ROYAL MINT DRIVE TO ROYAL PARK CRESCENT**  
SCALE 1:2500



**PRELIMINARY**


**LEGEND**

-  BUS ROUTE
-  SCHOOL LOCATION
-  LIMIT OF CONSTRUCTION

**NOTE:**  
These design documents are prepared solely for the use by the party with whom the design professional has entered into a contract and there are no representations of any kind made by the design professional to any party with whom the design professional has not entered into a contract.

**METRIC**

WHOLE NUMBERS INDICATE MILLIMETRES  
DECIMALIZED NUMBERS INDICATE METRES



**LOCATIONS APPROVED UNDERGROUND STRUCTURES**

NO.	REVISIONS	DATE	BY
2	ISSUED FOR TENDER	04/06/18	MV
1	ISSUED FOR CLIENT REVIEW	28/05/18	MV

NO.	REVISIONS	DATE	BY



DESIGNED BY	MV	CHECKED BY	VM
DRAWN BY	TW	APPROVED BY	VM
HOR. SCALE	VARIES		
VERTICAL	-		
DATE	28-MAY-2018		
RELEASED FOR CONSTRUCTION	DATE		

WSP Canada Group Limited  
Suite 111 - 93 Lombard Ave  
Winnipeg, MB R3B 3B1  
T. 204.943.3178  
F. 204.943.4948  
www.wsp.com

ENGINEER'S SEAL

CONSULTANT ACAD DWG. NO.  
18M-00748-01

**THE CITY OF WINNIPEG**  
PUBLIC WORKS DEPARTMENT  
ENGINEERING SERVICES DIVISION

2018 THIN BITUMINOUS OVERLAY (TBO) PROGRAM

ISLAND LAKES BOULEVARD, BLUE MOUNTAIN ROAD

ASPHALT OVERLAY

CITY DRAWING NUMBER  
SHEET 4 OF 4

BID NO.  
528-2018