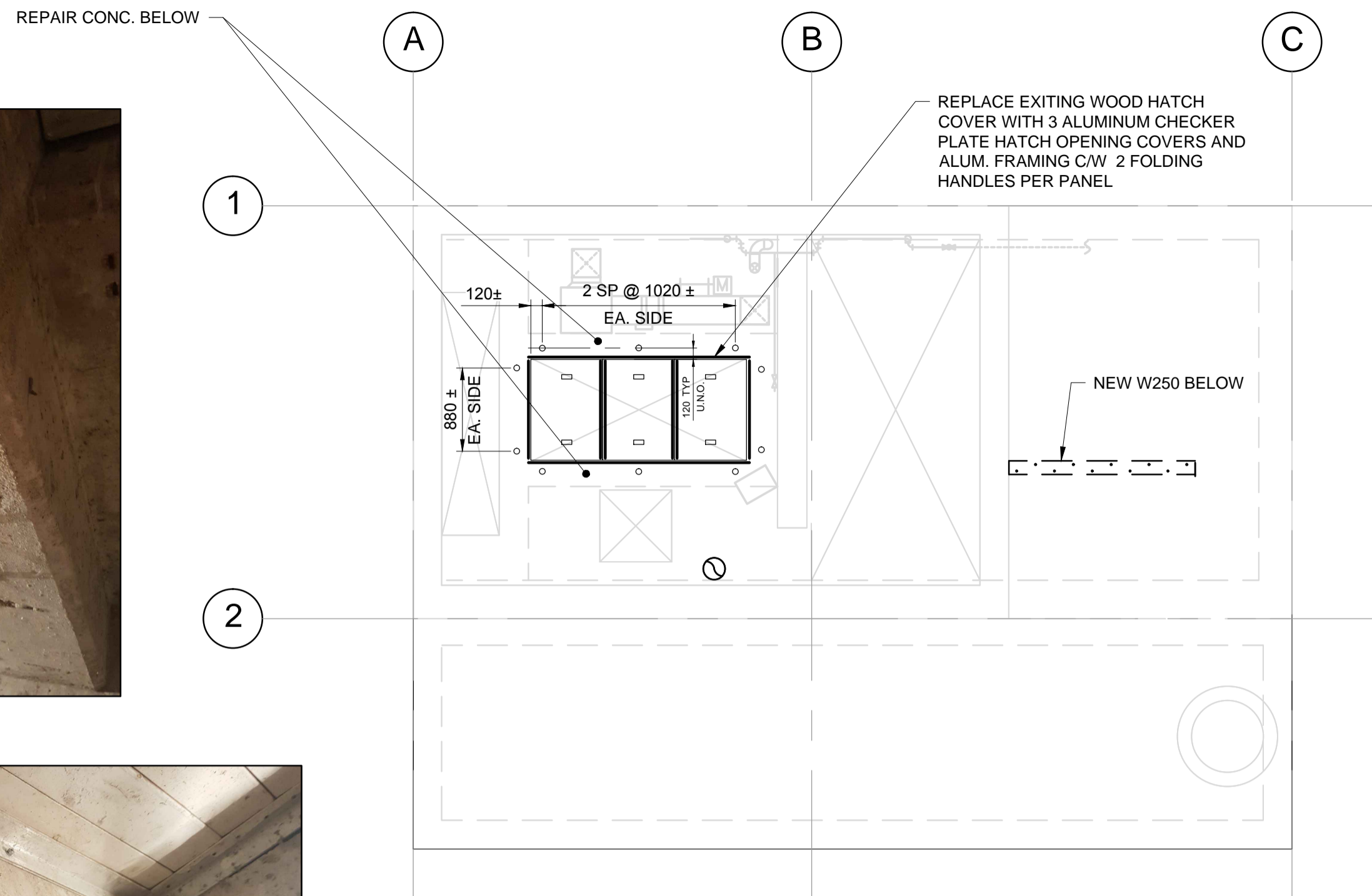


RUSTED STIRRUPS IN CONCRETE BEAM IN COMMUNOTOR FLOOR

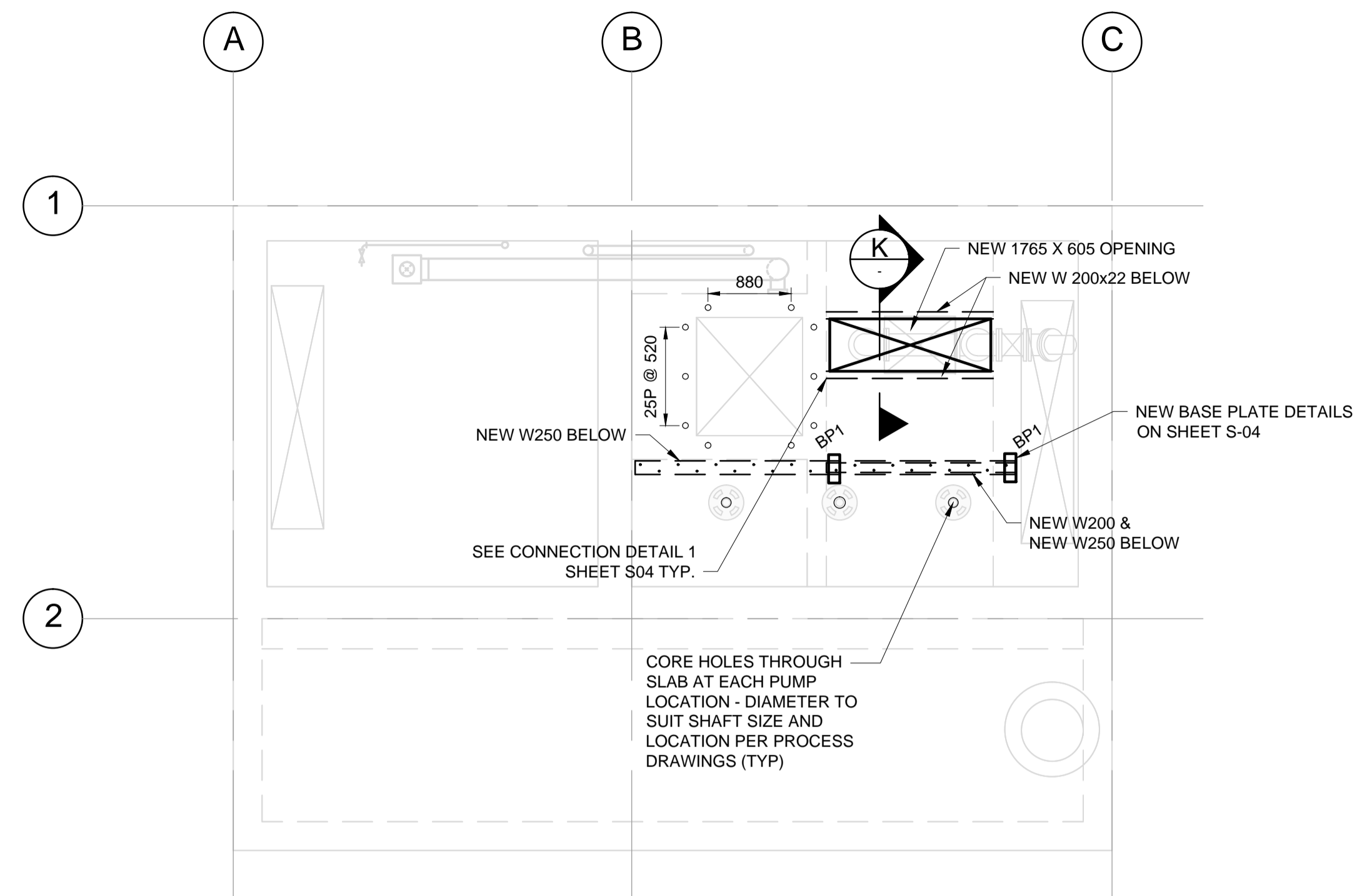


COMM. MOTOR ROOM FLOOR PLAN

1:50

NOTES FOR CONCRETE BEAM REPAIR:

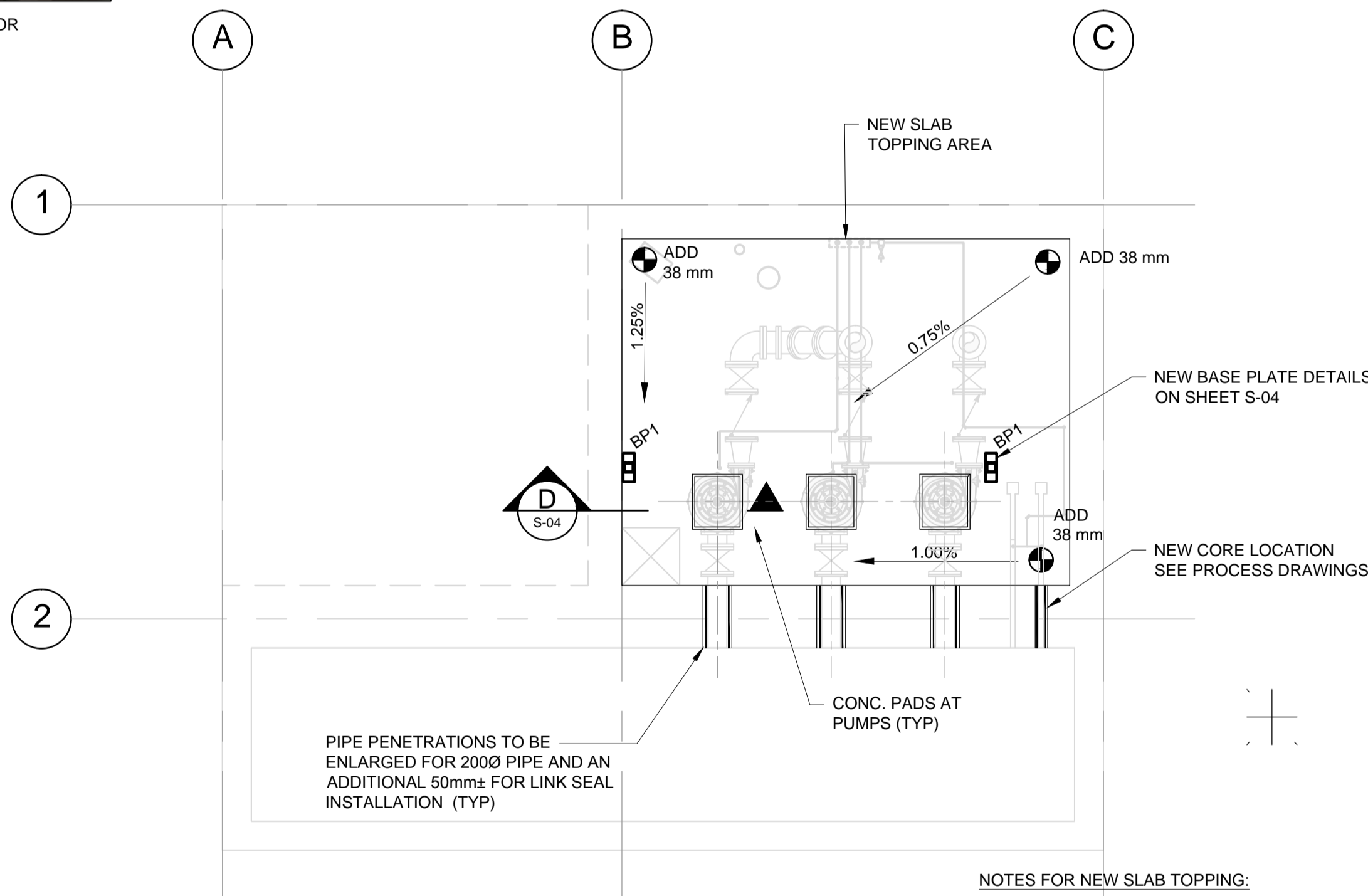
- CLEAN RUST ON REBAR AND LOOSE CONC. USING STEEL WIRE BRUSH.
- APPLY GALVAFROID TO EXPOSED REBAR.
- APPLY BONDING AGENT (SIKA TOP® ARMATEC- 110 EPOCEM OR APPROVED EQUIVALENT)
- PATCH WITH HIGH STRENGTH PATCHING MATERIAL (SIKA TOP® 123 PLUS OF APPROVED EQUIVALENT)



COMM. ROOM, PUMP MOTOR ROOM FLOOR PLAN

1:50

- NOTE
- NO OVER SAWCUT INTO EXISTING CONCRETE BEAMS IS ALLOWED.



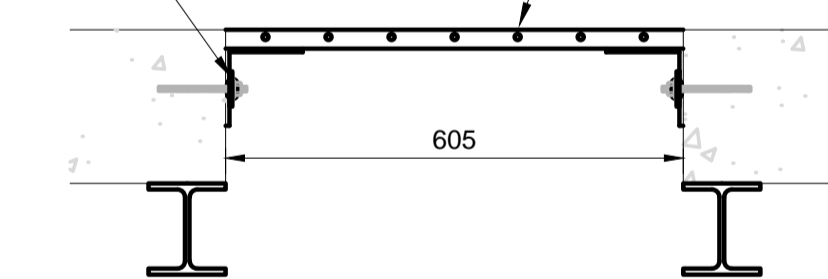
PUMP ROOM FLOOR PLAN

1:50

NOTES FOR NEW SLAB TOPPING:

- SCARIFY EXISTING SURFACE.
- APPLY BONDING AGENT (SIKATOP® ARMATEC-110 EPOCEM, OR APPROVED EQUIVALENT)
- APPLY HIGH STRENGTH CONCRETE PATCHING MATERIAL (SIKATOP® -123 PLUS, OR APPROVED EQUIVALENT) TO ACHIEVE ELEVATIONS AND SLOPES AS INDICATED.
- SURFACE TO BE NON-SLIP SURFACE.

NEW 102x102x6.4 C/W 160 THREADED RODS @ 400 O/C DRILLED @EPOXIED INTO CONCRETE SLAB WITH HILTI-HIT HY 200 PROVIDE 100 EMBED



SECTION K

1:10

13 June 2018

186936-01-S-COM-S02.dwg

NOT FOR CONSTRUCTION



NO.	REVISIONS	DATE	BY
0	ISSUED FOR TENDER	06/29/18	NR

		DESIGNED BY	NR	CHECKED BY	MBL
		DRAWN BY	DJB	APPROVED BY	MH
HOR. SCALE		AS SHOWN		RELEASED FOR CONSTRUCTION	
VERTICAL		AS SHOWN		DATE	
DATE		JUNE 2018		DATE	

ENGINEER'S SEAL
CONSULTANT PROJECT NUMBER
18-6936

		THE CITY OF WINNIPEG WATER AND WASTE DEPARTMENT	
HAWTHORNE WASTEWATER PUMPING STATION UPGRADES		CITY DRAWING NUMBER 1-0145L-S0003-001	
STRUCTURAL - PLANS		SHEET 06 OF 21 CONSULTANT DRAWING NUMBER S-02	