

**BACKFLOW PREVENTER**  
WATTS LF009M2-QT-909-AGC-LEAD FREE REDUCED PRESSURE ZONE ASSEMBLY.  
**POINT OF USE BACKFLOW PREVENTER**  
WATTS 9DM2 19mm DUAL CHECK VALVE WITH INTERMEDIATE ATMOSPHERIC VENT, BRASS BODY CONSTRUCTION, STAINLESS STEEL INTERNAL PARTS, TIGHT SEATING RUBBER CHECK VALVE ASSEMBLIES.

**HOSE BIBB**  
WATTS SC8-3 HYDRANT CAST BRASS HOSE BIBB, WATTS MODEL 8B TAMPER-PROOF VACUUM BREAKER WITH BREAK-AWAY SCREW, 13mm REGULAR PATTERN, DUAL SWEAT CONNECTION WITH CAST IRON HAND WHEEL, CAST BRASS, ADJUSTABLE PACKING NUT CARTRIDGE.

**SOLENOID VALVE (SEAL WATER SYSTEM)**  
ASCO SERIES 8210 2-WAY VALVE, 304 STAINLESS STEEL BODY, 9mm NPT, PTFE SEALS AND DISCS, 302 STAINLESS STEEL SPRING, 120 VOLTS AC. SUPPLIED BY OTHERS.

**MOTORIZED DAMPER: MD-L60**  
TAMCO SERIES 9000BF THERMALLY BROKEN FRAME THERMALLY INSULATED DAMPER, PARALLEL BLADE ACTION DAMPER, DESIGNED FOR OPERATION IN TEMPERATURES RANGING FROM -40C TO 100C, BLADE AND FRAME SEALS ARE EXTRUDED SILICONE FOR REDUCED AIR LEAKAGE AT COLDER TEMPERATURES, C/W BELIMO AFX24 DAMPER ACTUATOR ON/OFF, SPRING RETURN, 24VAC/DC.

**MOTORIZED DAMPER: MD-L61-1 AND MD-L61-2**

TAMCO SERIES 9000BF THERMALLY BROKEN FRAME THERMALLY INSULATED DAMPER, OPPOSED BLADE ACTION DAMPER, DESIGNED FOR OPERATION IN TEMPERATURES RANGING FROM -40C TO 100C, BLADE AND FRAME SEALS ARE EXTRUDED SILICONE FOR REDUCED AIR LEAKAGE AT COLDER TEMPERATURES, C/W BELIMO LF24-SR US DAMPER ACTUATOR MODULATING SPRING RETURN, 24VAC/DC, FOR 2 TO 10VDC CONTROL SIGNAL.

MARK	MFR	MODEL	AIR FLOW		HEATING OUTPUT		TEMP SET POINT		ELECTRICAL			NOTES	
			L/S	CFM	kw	MBH	°C	°F	kw	HP	VOLTS		PHASE
UH-L60-1	OUELLET	OAS03038	240	510	3	10.2	15.6	60	0.02	1/30	208	3	1
UH-L60-2	OUELLET	OAS03038	240	510	3	10.2	15.6	60	0.02	1/30	208	3	1
UH-L60-3	OUELLET	OAS02038	240	510	2	6.8	15.6	60	0.02	1/30	208	3	1

NOTES:  
1. C/W BUILT-IN THERMOSTAT AND MOUNTING BRACKETS.

TAG	MODEL	REMARKS
GR-L61-1	620DAL/SDF/S/B12	1. REFER TO DRAWING FOR GRILLE SIZE.
GR-L61-2		2. ALUMINUM CONSTRUCTION C/W DAMPER AND SPIRAL DUCT FRAME.

MARK	MFR	MODEL	AIR FLOW		ESP (Pa)	MOTOR (IN. WG)	MOTOR (HP)	MOTOR (RPM)	SOUND LEVEL (dBA)	POWER		NOTES
			(L/s)	(CFM)						VOLT	PHASE	
SF-L61	GREENHECK	SQ-120-VG	302	640	124.5	0.5	1/2	1725	49	208	1	1,2,4
EF-L60	GREENHECK	CW-121-VG	401	850	124.5	0.5	1/4	1725	55	208	1	2,3,5

NOTE:  
1. LEFT SIDE DISCHARGE C/W 1" THICK INSULATED ALUMINUM HOUSING. INTERLOCK WITH MAIN FLOOR LIGHT SWITCH.  
2. C/W VARI GREEN SPEED CONTROL DIAL.  
3. ALUMINUM HOUSING C/W BACKDRAFT DAMPER, BIRDSCREEN AND WALL GRILLE.  
4. C/W HANGING RODS AND VIBRATION ISOLATORS.  
5. PROVIDE DUCT MOUNTED AIR FLOW SWITCH FOR MONITORING OF FAN OPERATION, WIRING TO RTU BY ELECTRICAL.

TAG	WIDTH		HEIGHT		SERVES	ELECTRICAL RATINGS			Air Flow		TEMP SET POINT		ACCEPTABLE PRODUCT		NOTES
	mm	in	mm	in		VOLTS	PHASE	KW	L/s	CFM	°C	°F	MFR	MODEL	
HCE-L61	300	12	300	12	SF-L61	600	3	16.0	302	640	10	50	GREENHECK	IDHC	1,2

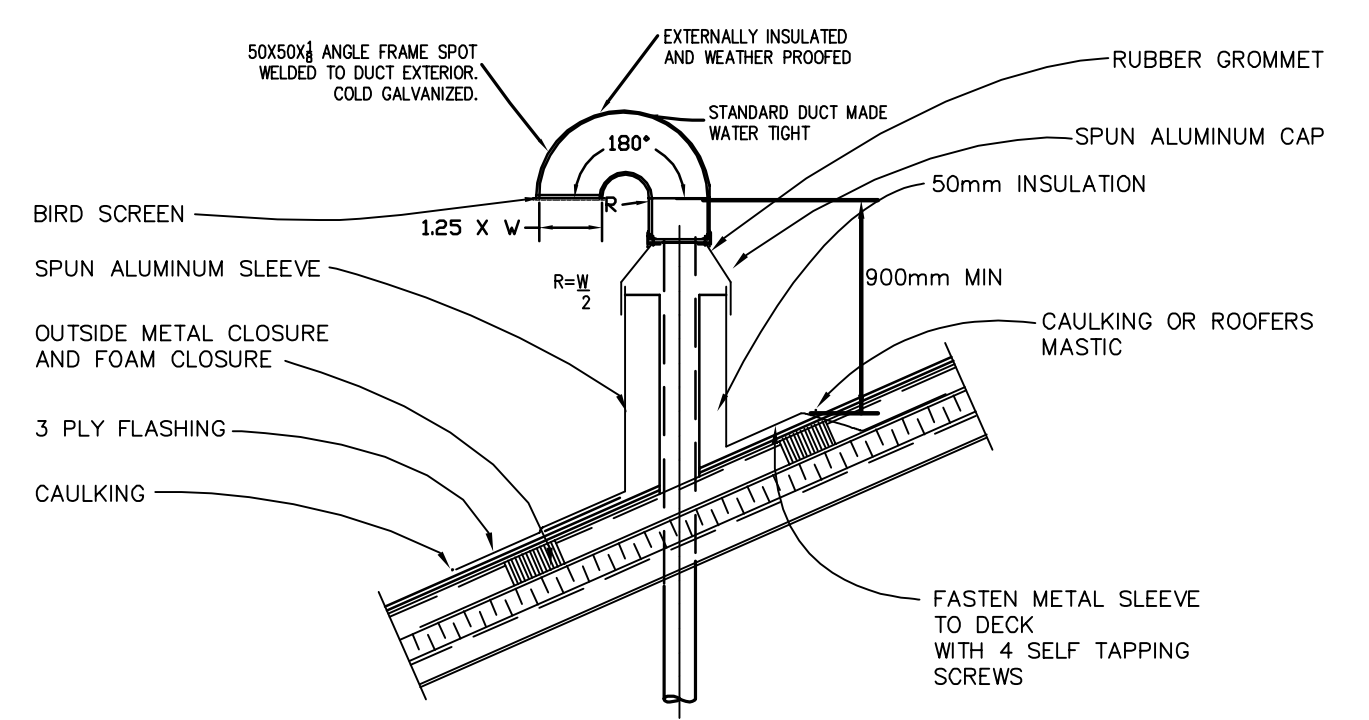
NOTES:  
1. PROVIDE WITH SCR CONTROLLER, ADJUSTABLE AIRFLOW SWITCH, MAGNETIC CONTACTOR, CONTROL FUSE, DISCONNECT SWITCH.  
2. C/W TRANSFORMER, DUCT THERMOSTAT, PILOT LIGHT AND AUTOMATIC LIMIT SWITCH FOR OVER TEMPERATURE PROTECTION.

TAG	LOCATION	SERVES	TYPE	DIMENSIONS						AIR FLOW RATE		AIR PRESSURE DROP		ACCESSORIES	ACCEPTABLE PRODUCTS	NOTES
				WIDTH		HEIGHT		DEPTH		(L/s)	(CFM)	(Pa)	(in.WC)			
LV-L61	MAIN FLOOR	SF-L61 / EF-L60	I	610	24	914	36	178	7	703	1,490	30	0.12	BS, FF	GREENHECK EHH-701, INTAKE	1,2

ACCESSORIES:  
BP BLANK-OFF PANELS  
BS BIRDSCREEN  
I INTAKE  
FF FLANGED FRAME  
CA CLIP/CONTINUOUS ANGLE  
R RELIEF  
SA STRAP FASTENERS  
JB JAMB FASTENERS  
E EXHAUST  
SB STRAP FASTENERS  
GA GLAZING ADAPTER

TYPE:  
I INTAKE  
FF FLANGED FRAME  
CA CLIP/CONTINUOUS ANGLE  
R RELIEF  
SA STRAP FASTENERS  
JB JAMB FASTENERS  
E EXHAUST  
SB STRAP FASTENERS  
GA GLAZING ADAPTER

NOTES:  
1. HEAVY GAUGE EXTRUDED ALUMINUM WITH ADJUSTABLE HEAD MEMBER AND HORIZONTAL RAIN RESISTANT BLADES. KYNAR 70% (2 COAT) FINISH.  
2. COLOUR TO MATCH EXISTING LOUVER COLOUR (SLATE BLUE).



DESIGNED BY	E.P.	CHECKED BY	P.D.T
DRAWN BY	E.R.P.	APPROVED BY	MH
HOR. SCALE	AS SHOWN	NOT RELEASED FOR CONSTRUCTION	
VERTICAL	AS SHOWN		
ISSUED FOR TENDER	06/29/18	EP	
NO. REVISIONS	DATE	BY	DATE
	JUNE 2018		

ENGINEER'S SEAL

**DILLON CONSULTING**

**THE CITY OF WINNIPEG WATER AND WASTE DEPARTMENT**

HAWTHORNE WASTEWATER PUMPING STATION UPGRADES

MECHANICAL - DETAILS AND SCHEDULES

CITY DRAWING NUMBER 1-0145L-M0004-001

SHEET 11 OF 21

CONSULTANT PROJECT NUMBER 18-6936

CONSULTANT DRAWING NUMBER M-03

**NOT FOR CONSTRUCTION**

FILENAME: C:\PROJECTS\WORKING DIRECTORIES\PROJECTS\2018\ZERRA\DWG\18075\18075-01.MECH.DESIGNING PLOTTED BY: HELLETER, ERC  
 PLOT DATE: 2018-06-29 2:21:01 PM PLOT SCALE: 1:1 PLOT STYLE: DILLON-STANDARD.CTB  
 PLOT BY: 2018-06-29 2:21:01 PM PLOT SCALE: 1:1 PLOT STYLE: DILLON-STANDARD.CTB