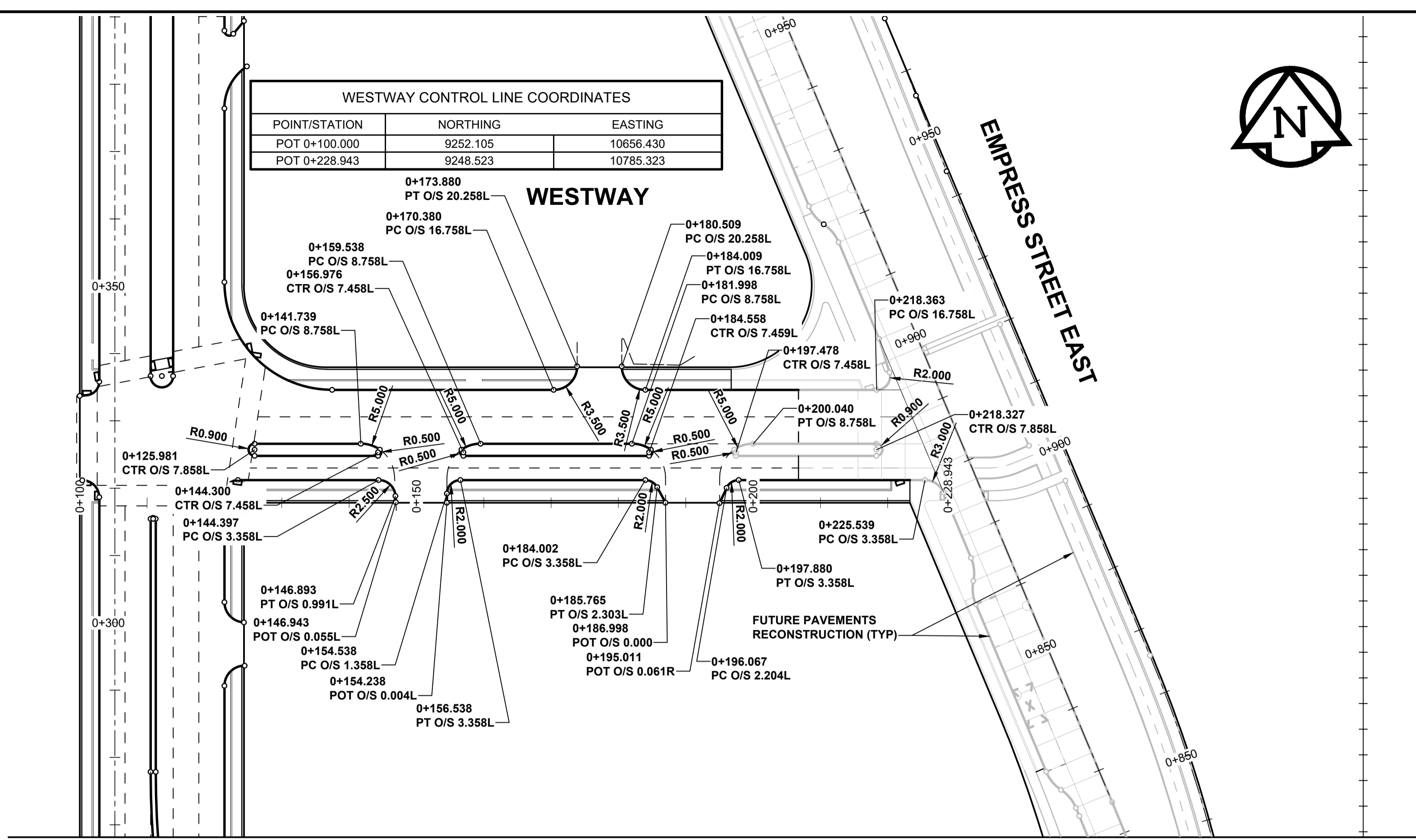
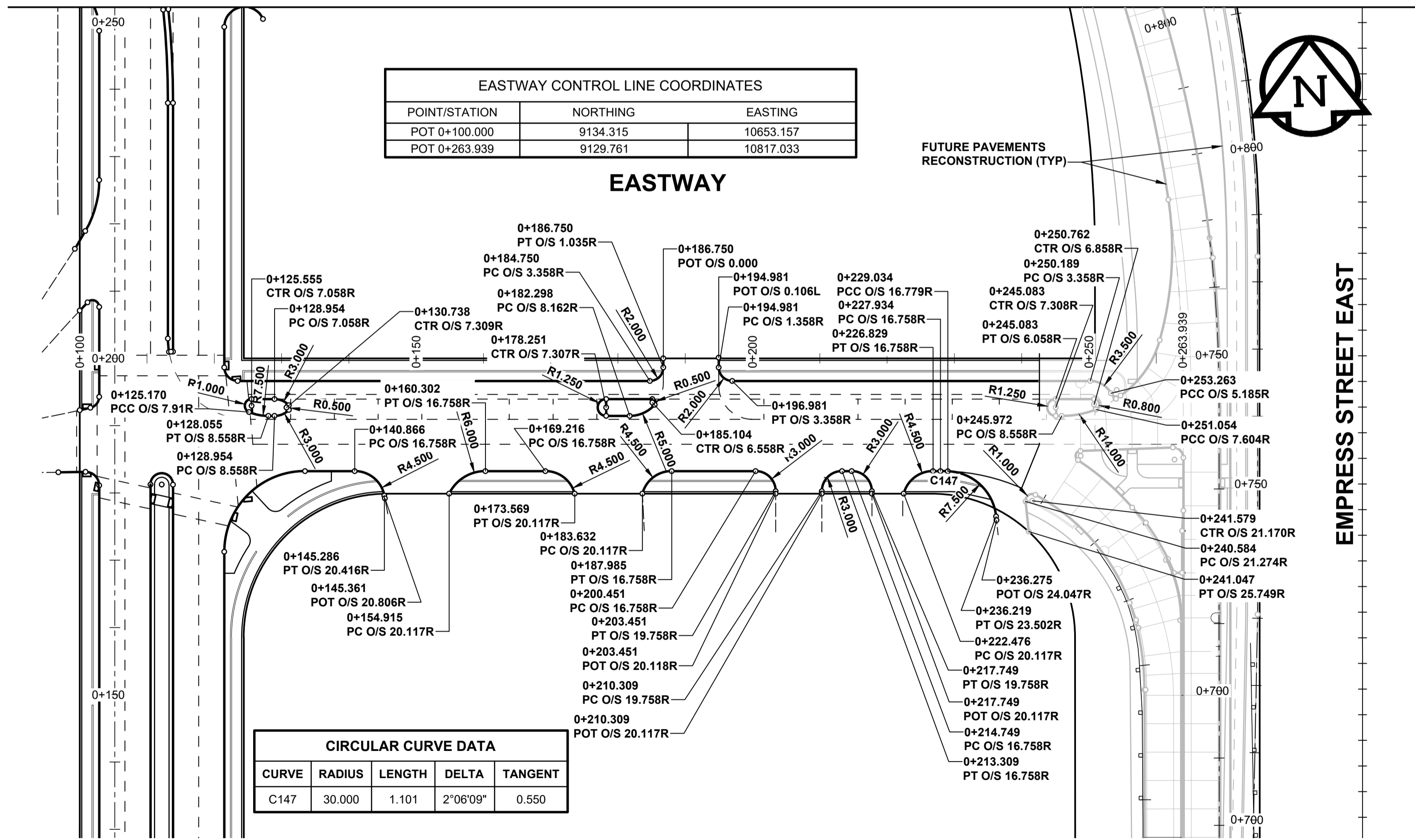


WESTWAY CONTROL LINE COORDINATES		
POINT/STATION	NORTHING	EASTING
POT 0+100.000	9252.105	10656.430
POT 0+228.943	9248.523	10785.323



EASTWAY CONTROL LINE COORDINATES		
POINT/STATION	NORTHING	EASTING
POT 0+100.000	9134.315	10653.157
POT 0+263.939	9129.761	10817.033



CIRCULAR CURVE DATA				
CURVE	RADIUS	LENGTH	DELTA	TANGENT
C147	30.000	1.101	2°06'09"	0.550

**METRIC**  
WHOLE NUMBERS INDICATE MILLIMETRES  
DECIMALIZED NUMBERS INDICATE METRES

EXISTING	NEW	EXISTING	LEGEND - PLAN	NEW	EXISTING	LEGEND - PLAN	NEW
			MANHOLE			CONCRETE PAVEMENT	
			CATCH BASIN / CATCH PIT			CONC SIDEWALK / MEDIAN	
			CURB INLET WITH BOX			ASPHALT PAVEMENT	
			TREE			PAVING STONE	
			TEST HOLE			GRAVEL	
			PROPERTY LINE			RAMP CURB	
			SURVEY BAR			PLANING / REMOVAL	
			FENCE			LOCATION APPROVED	
			BOC / EDGE OF PAVEMENT			UNDERGROUND STRUCTURES	
			ELEVATION			DATE	
			TRAFFIC SIGN			COMMITTEE	

**LOCATION APPROVED**  
UNDERGROUND STRUCTURES

DATE

**NOTE:**  
LOCATION OF UNDERGROUND STRUCTURES AS SHOWN ARE BASED ON THE BEST INFORMATION AVAILABLE BUT NO GUARANTEE IS GIVEN THAT ALL EXISTING UTILITIES ARE SHOWN OR THAT THE GIVEN LOCATIONS ARE EXACT. CONFIRMATION OF EXISTENCE AND EXACT LOCATION OF ALL SERVICES MUST BE OBTAINED FROM THE INDIVIDUAL UTILITIES BEFORE PROCEEDING WITH CONSTRUCTION.

No.	REVISIONS	DATE	BY
B	ISSUED FOR TENDER	18/03/09	RPB
A	ISSUED FOR CLIENT REVIEW	18/01/31	RPB

DESIGNED BY	CHECKED BY	DATE
WRJ	RPB	18/03/09
DID	BWB	18/01/31

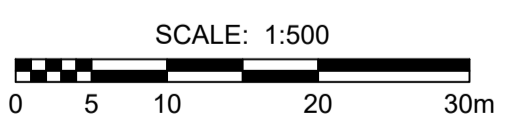
PROFESSIONAL'S SEAL  
PROVINCE OF MANITOBA  
REGISTERED PROFESSIONAL ENGINEER  
R.P. BRUCE  
CONSULTANT FILE NAME  
W160034-4-Empress-Rehab-HG-4.dwg

**THE CITY OF WINNIPEG**  
PUBLIC WORKS DEPARTMENT  
ENGINEERING DIVISION

2018 REGIONAL STREET REHABILITATION  
EMPRESS STREET  
PORTAGE AVENUE TO JACK BLICK AVENUE;  
WESTWAY AND EASTWAY  
WESTWAY/EASTWAY  
HORIZONTAL GEOMETRY  
EMPRESS STREET TO EMPRESS STREET EAST

CITY DRAWING NUMBER  
P-3494-4  
SHEET 4 OF 14  
DRAWING No. REV  
4 B

BID OPPORTUNITY No. 38-2018



**ENGINEERS GEOSCIENTISTS MANITOBA**  
Certificate of Authorization  
MORRISON HERSHFELD  
No. 1736