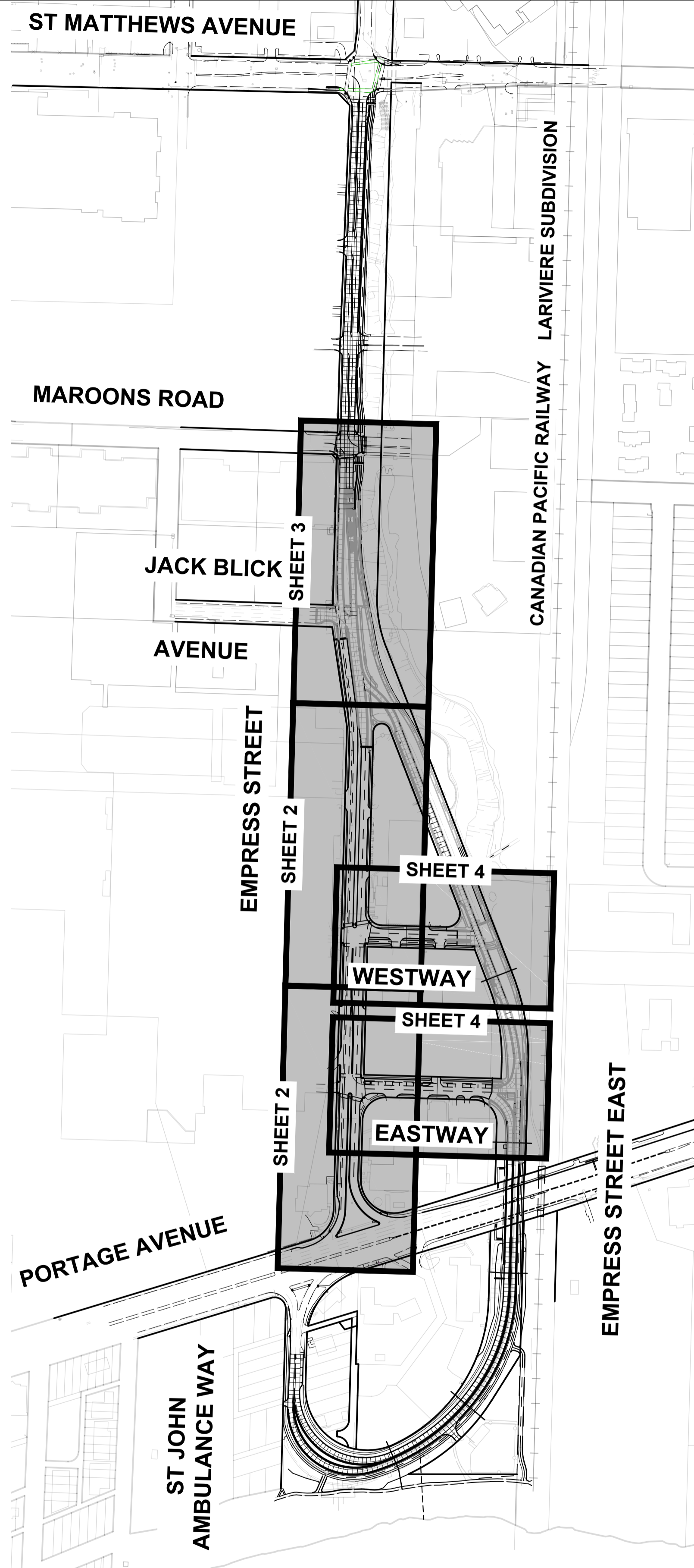
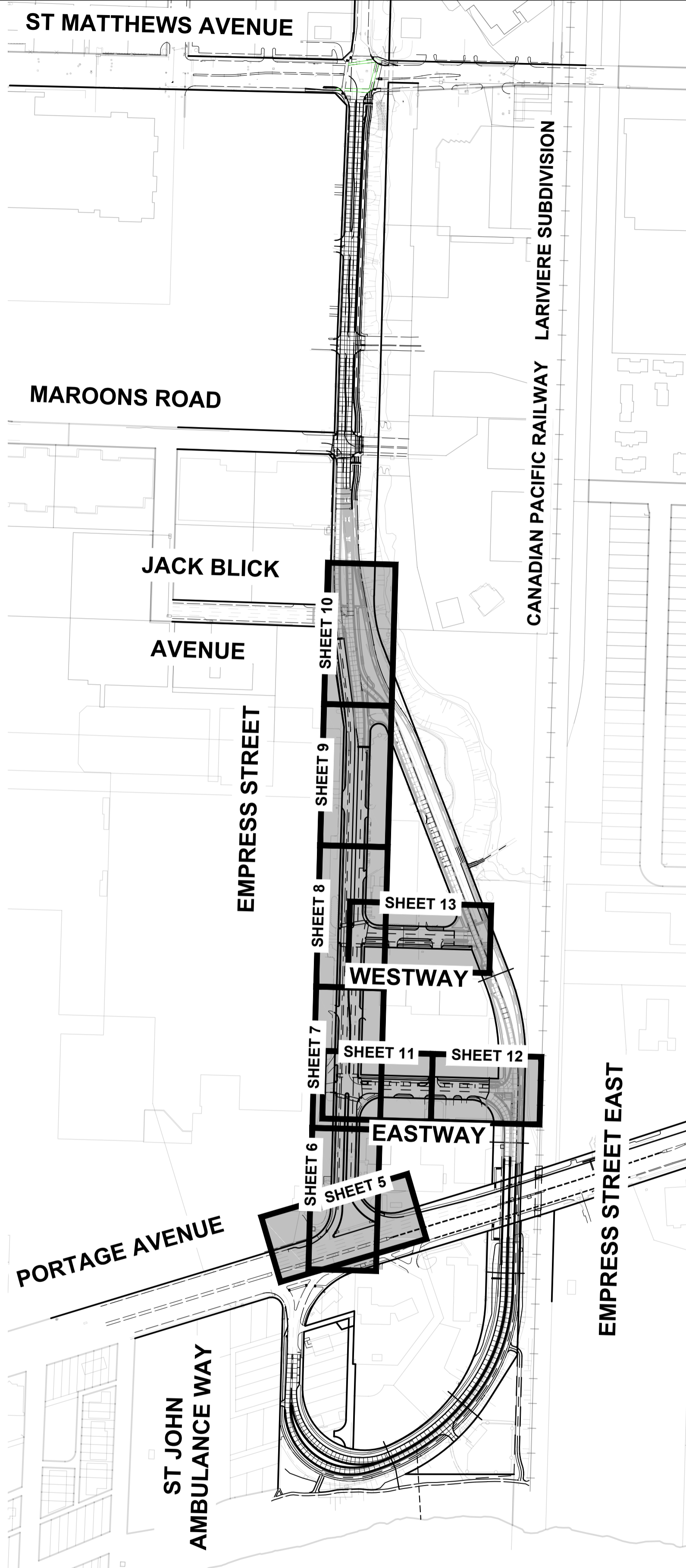
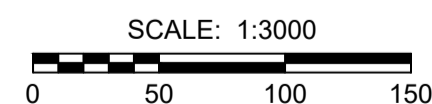


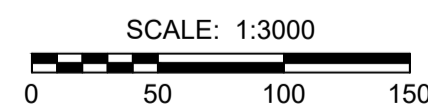
ISO A1 - 564mm x 841mm
 O:\Winnipeg\Proj\W1600344 Design\1-Rehabilitation\W1600344-1-Empress-Rehab-KP-1.dwg
 Last Saved: 3/5/2018 2:08 PM by D.Daszpod
 Picked: 3/5/2018 2:30 PM by Daniel Daszpod



KEY PLAN-HORIZONTAL GEOMETRY



KEY PLAN-HORIZONTAL ALIGNMENT



| DRAWING LIST | |
|--|---|
| No. | DESCRIPTION |
| 0 | COVER SHEET AND LOCATION PLAN |
| 1 | KEY PLAN, DRAWING LIST, HORIZONTAL AND VERTICAL CONTROL |
| HORIZONTAL GEOMETRY | |
| EMPRESS STREET | |
| 2 | PORTAGE AVENUE TO STA 0+490 |
| 3 | STA 0+490 TO JACK BLICK AVENUE |
| WESTWAY/EASTWAY | |
| 4 | EMPRESS STREET TO EMPRESS STREET EAST |
| HORIZONTAL ALIGNMENT | |
| EMPRESS STREET | |
| 5 | EMPRESS STREET AND PORTAGE AVENUE INTERSECTION |
| HORIZONTAL AND VERTICAL ALIGNMENT | |
| EMPRESS STREET | |
| 6 | PORTAGE AVENUE TO STA 0+150 |
| 7 | STA 0+150 TO STA 0+280 |
| 8 | STA 0+280 TO STA 0+410 |
| 9 | STA 0+410 TO STA 0+540 |
| 10 | STA 0+540 TO STA JACK BLICK AVENUE |
| EASTWAY STREET | |
| 11 | EMPRESS STREET TO STA 0+190 |
| 12 | STA 0+190 TO EMPRESS STREET STREET EAST |
| WESTWAY STREET | |
| 13 | EMPRESS STREET TO EMPRESS STREET STREET EAST |
| PAVEMENT CROSS SECTIONS | |
| 14 | |

| SURVEY BAR-HORIZONTAL CONTROL POINTS-PROJECT COORDINATES | | | | | NAD83 DATUM | |
|--|--|-----------|-----------|-----------|-------------|------------|
| CONTROL POINT | LOCATION | NORTHING | EASTING | ELEVATION | NORTHING | EASTING |
| #1 | SURVEY BAR @ W PL EMPRESS ST AND S PL ELLICE AVE | 10401.347 | 10679.826 | 233.820 | 5528402.542 | 629575.888 |
| #2 | SURVEY BAR @ PCC ON N PL/S LEG EMPRESS ST | 8793.509 | 10704.834 | 233.281 | 5528402.542 | 629575.888 |

NOTE: THE PROJECT DRAWINGS HAVE A SCALE FACTOR OF 1.000236369 APPLIED TO LBIS INFORMATION TO MATCH LOCAL SURVEYED PROJECT COORDINATES

| GEODEIC BENCHMARK-VERTICAL CONTROL POINTS | | |
|---|--|-----------|
| GBM | LOCATION | ELEVATION |
| 37-037 | N.E. Cor. St. Matthews Ave & St. James St., Tblt. in S.Conc. foundation No. 945 St. James St. | 234.171m |



BID OPPORTUNITY No. 38-2018

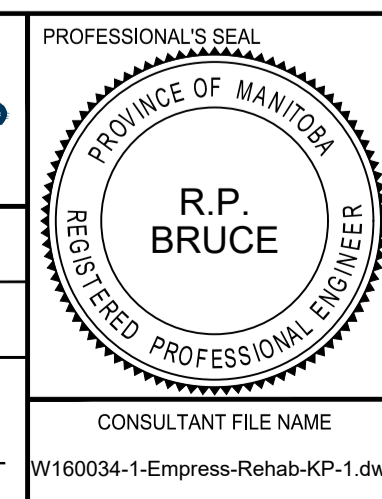
LOCATION APPROVED UNDERGROUND STRUCTURES

SUPR. U/G STRUCTURES COMMITTEE DATE

NOTE: LOCATION OF UNDERGROUND STRUCTURES AS SHOWN ARE BASED ON THE BEST INFORMATION AVAILABLE BUT NO GUARANTEE IS GIVEN THAT ALL EXISTING UTILITIES ARE SHOWN OR THAT THE GIVEN LOCATIONS ARE EXACT. CONFIRMATION OF EXISTENCE AND EXACT LOCATION OF ALL SERVICES MUST BE OBTAINED FROM THE INDIVIDUAL UTILITIES BEFORE PROCEEDING WITH CONSTRUCTION.

| No. | REVISIONS | DATE | BY |
|-----|--------------------------|----------|-----|
| B | ISSUED FOR TENDER | 18/03/09 | RPB |
| A | ISSUED FOR CLIENT REVIEW | 18/01/23 | RPB |

| | |
|----------------------------|------------------|
| MORRISON HERSHFIELD | |
| DESIGNED BY: RPB | CHECKED BY: WRJ |
| DRAWN BY: DID | APPROVED BY: BWB |
| RELEASED FOR CONSTRUCTION | |
| HOR SCALE: 1:2500 | VERT SCALE: N/A |
| DATE: 18/03/09 | DATE: |



THE CITY OF WINNIPEG
 PUBLIC WORKS DEPARTMENT
 ENGINEERING DIVISION

2018 REGIONAL STREET REHABILITATION
EMPRESS STREET
 PORTAGE AVENUE TO ST. MATTHEWS,
 WESTWAY AND EASTWAY
**KEY PLAN, DRAWING LIST &
 HORIZONTAL AND VERTICAL CONTROL**

CITY DRAWING NUMBER: P-3494-1
 SHEET 1 OF 14
 DRAWING No. 1 REV B

METRIC
 WHOLE NUMBERS INDICATE MILLIMETRES
 DECIMALIZED NUMBERS INDICATE METRES