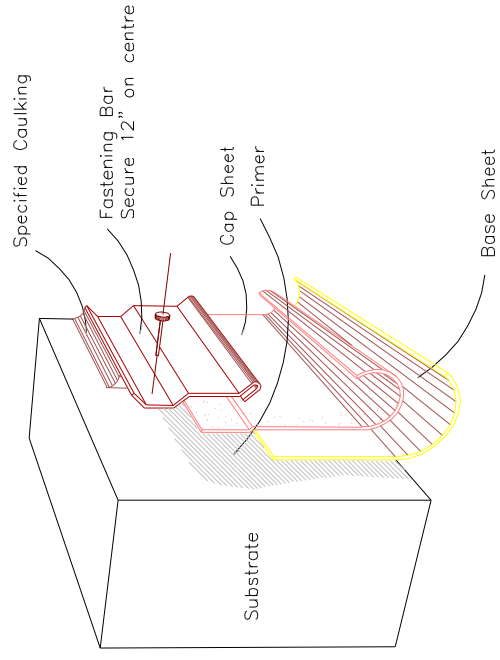
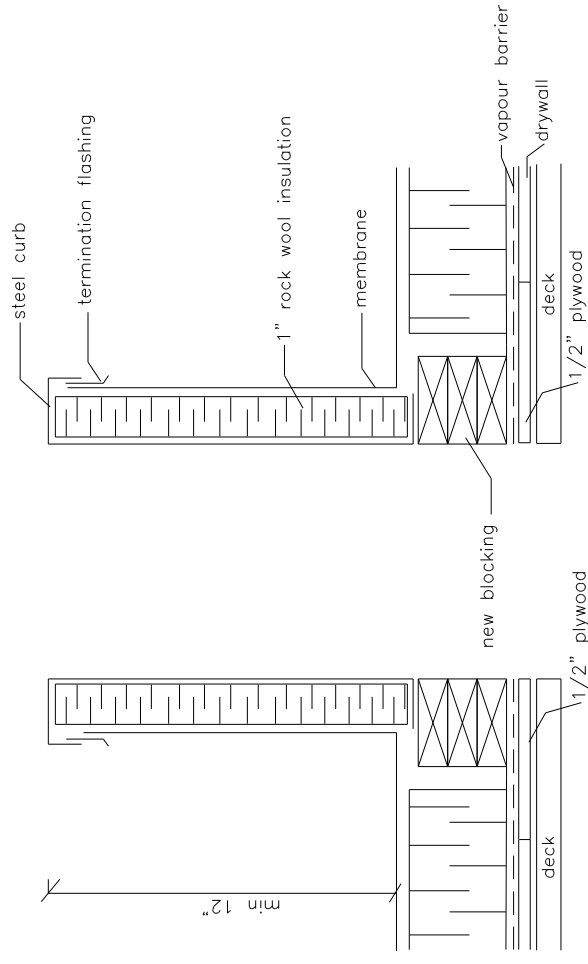


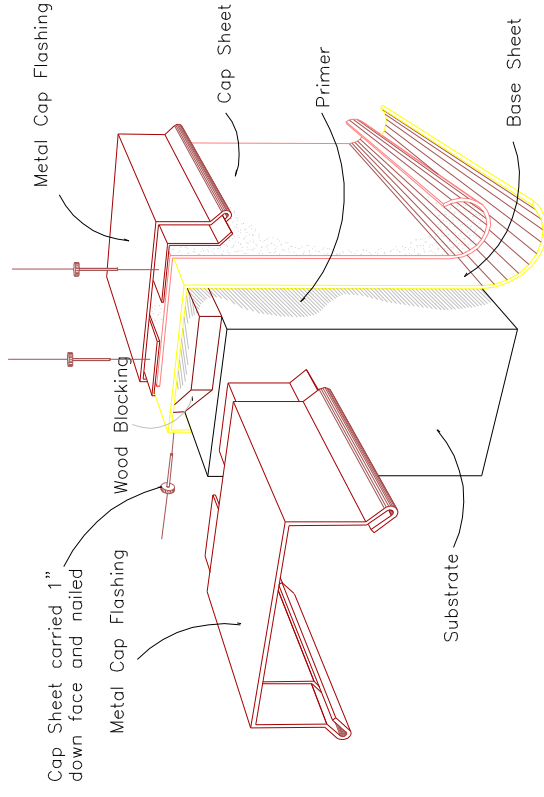
Typical Fastening Bar



Steel Curb Construction

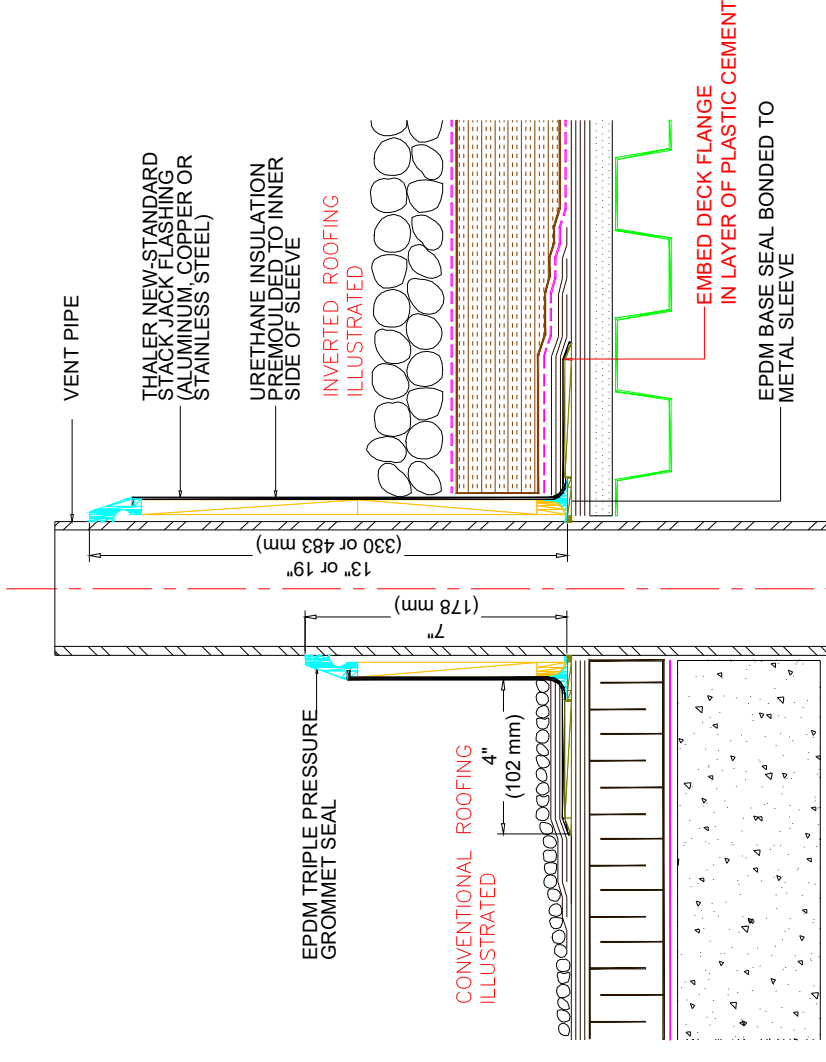
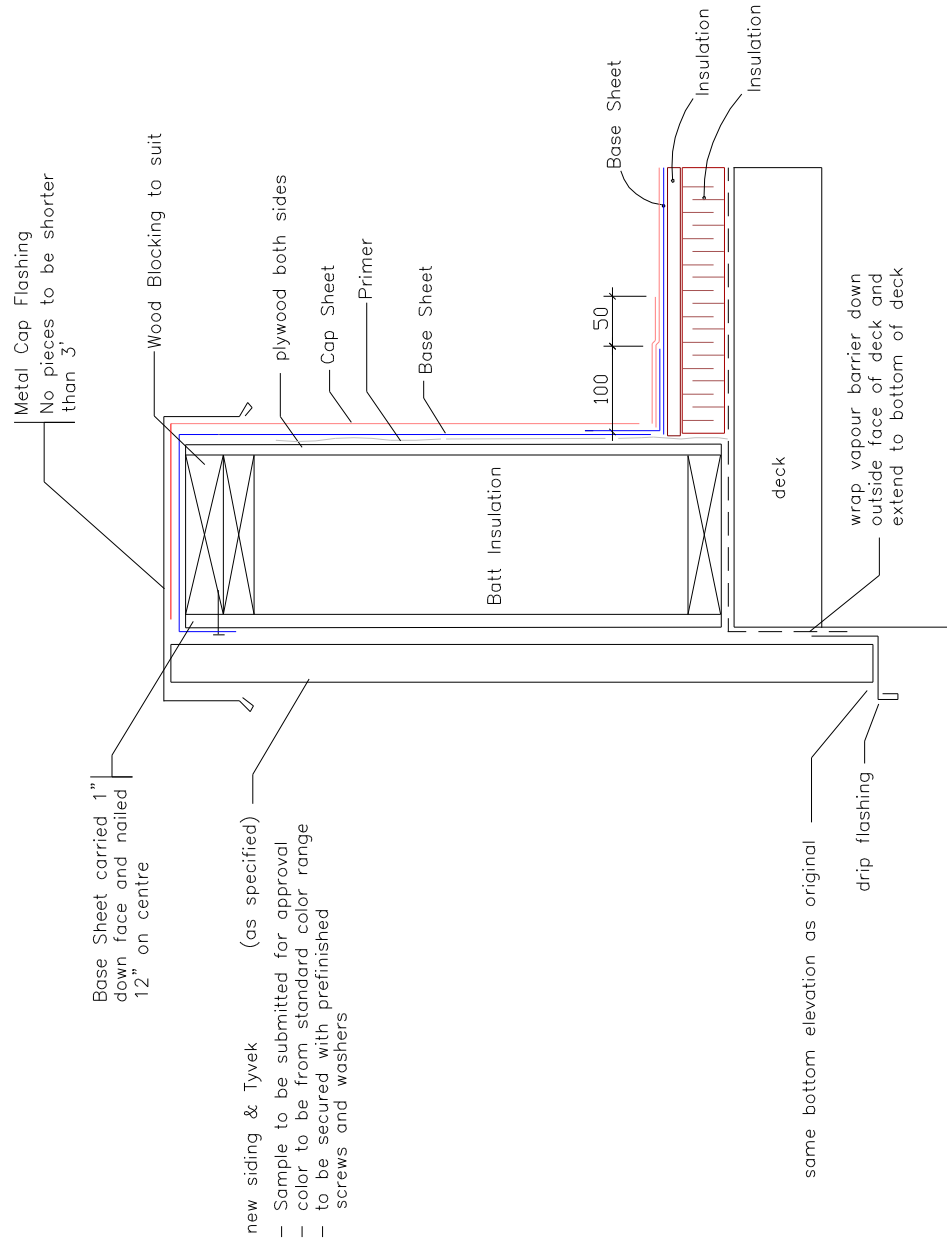


Parapet / Divider

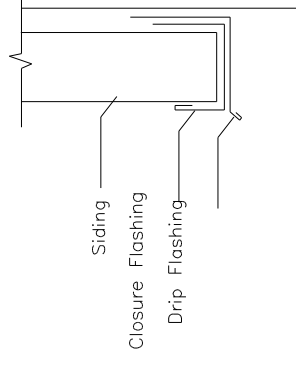


A continuous 18 gauge galvanized cleat is to be installed to insure outside face of flashing is firmly attached to outside face of flashing exceeds 4".

New Parapet



Siding Bottom Flashing



Agassiz Consulting Group Ltd.
 Box 41, Warren, Manitoba R0C 3E0
 Office Phone: (204) 383-5538

Project: WFPS – Station 20
 525 Banting Street
 Winnipeg, MB

Date: April 15, 2018

Drawing No. D-1

File no: 4889-18 Scale: NTS