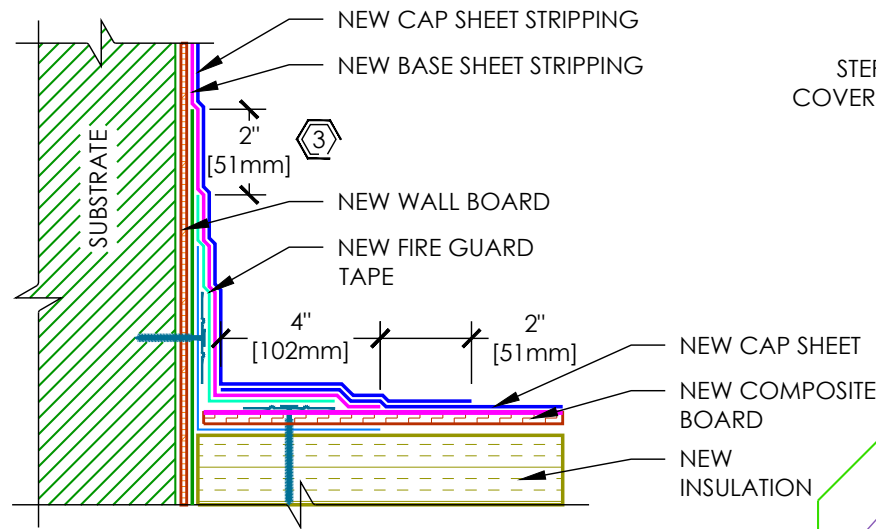
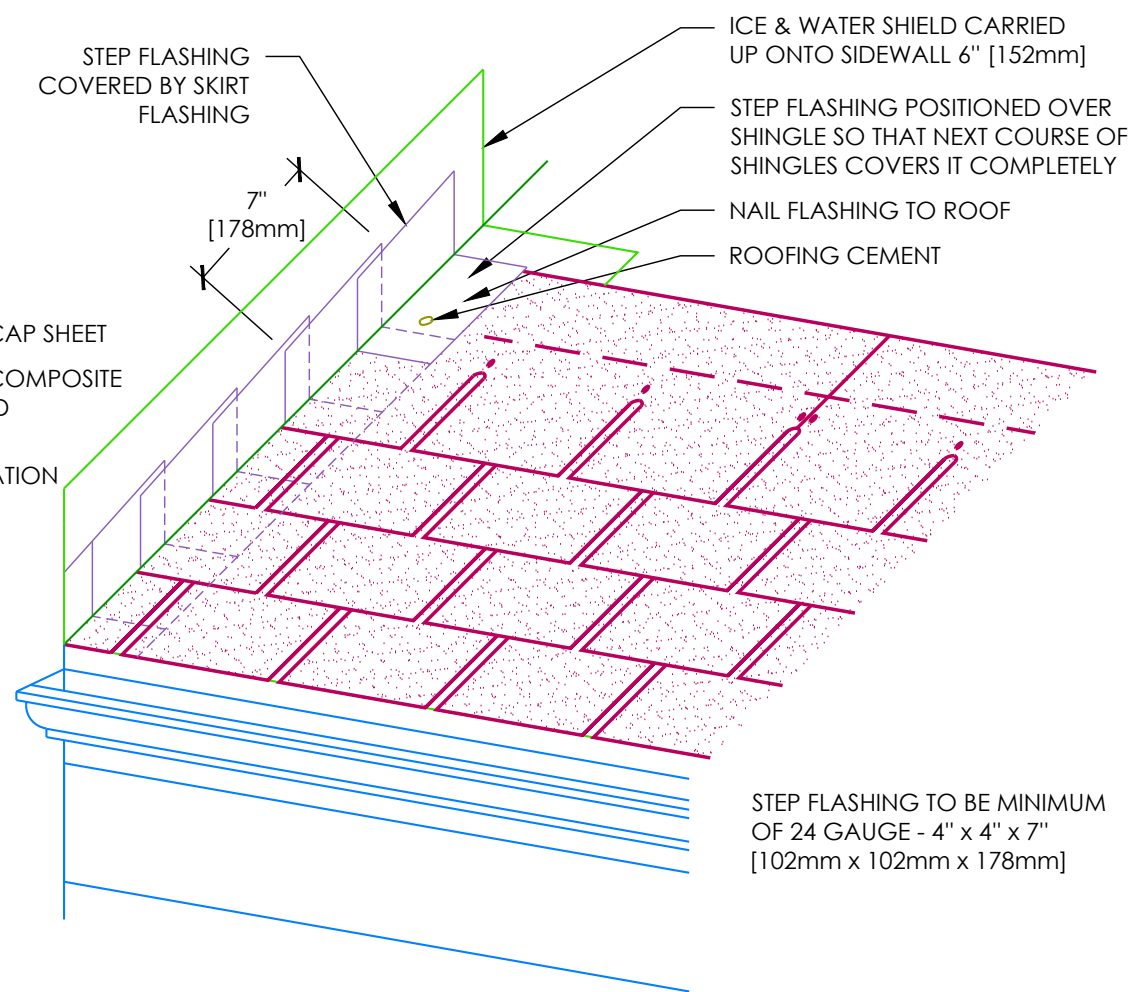


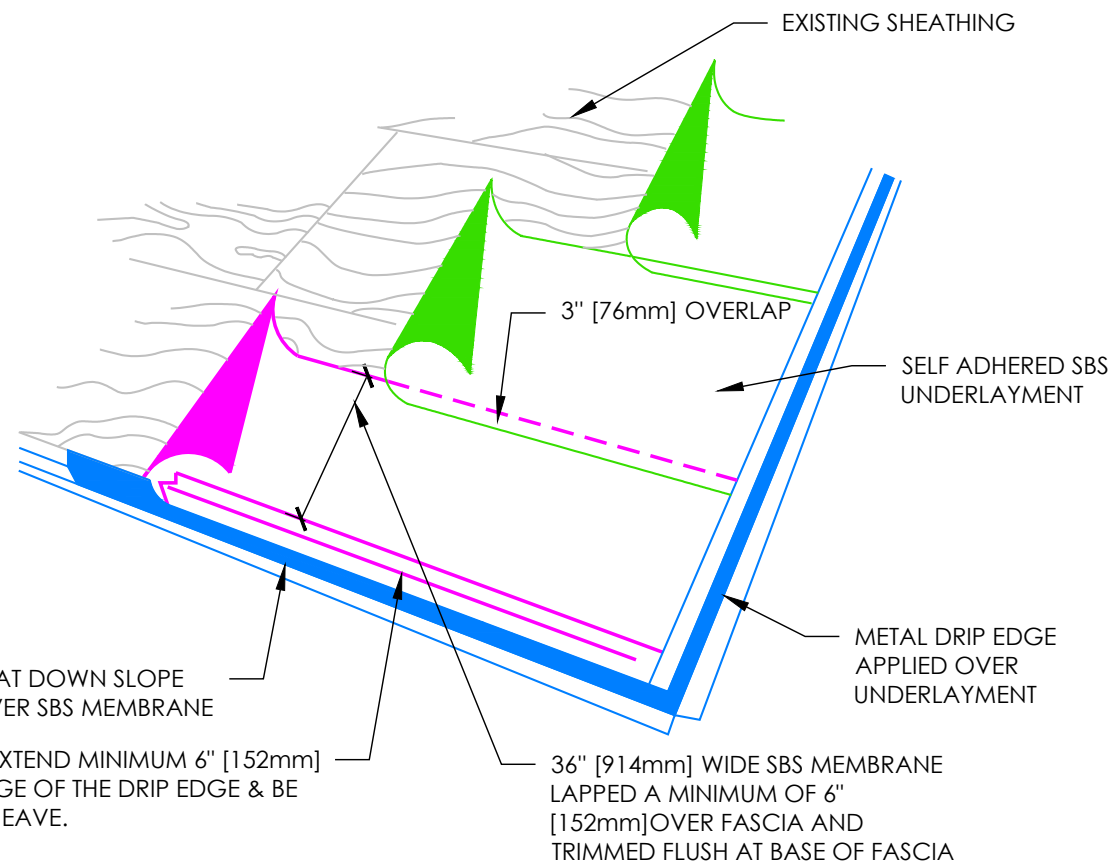
1 PERIMETER RESTRAINT
NTS



2 BASE TIE IN
NTS



3 TYPICAL SHINGLE STEP FLASHING
NTS



4 TYPICAL ADHERED UNDERLAY DETAIL
NTS

KEY NOTES

1. LAY ASPHALTIC CORE BOARD ON ANGLE FLASHING AND MECHANICALLY ATTACH PANEL TO ANGLE FLASHING WITH 2" [51mm] PLATES AND FASTENERS @ 12" O.C. [305mm]
2. MECHANICALLY ATTACH ANGLE FLASHING TO PARAPET/WALL/ CURB WITH 2" [51mm] PLATES AND FASTENERS @ 12" O.C. [305mm]
3. ENSURE 2" [51mm] MIN. LAP BETWEEN VAPOUR BARRIER AND BASE SHEET.

RMIS ENGINEERING



389 MAXWELL CRESCENT
Regina, SK S4N 5X9
www.rmiseng.ca
Phone 306.352.4606
Fax 306.352.4607



WESTWOOD LIBRARY
C.13.MB.35-18.02.03

66 ALLARD AVENUE
WINNIPEG, MB R3K 0T3

CITY OF WINNIPEG

4TH FLOOR - 185 KING STREET
WINNIPEG, MB R3B 1J1

| No. | DATE | DESCRIPTION |
|-----|------|-------------|
| | | |
| | | |
| | | |
| | | |
| | | |
| | | |

DESIGNED BY SMC 04/27/2018
DRAWN BY SED 04/27/2018
REVIEWED BY SMC 05/03/2018

TYPICAL
DETAILS

A 5.02