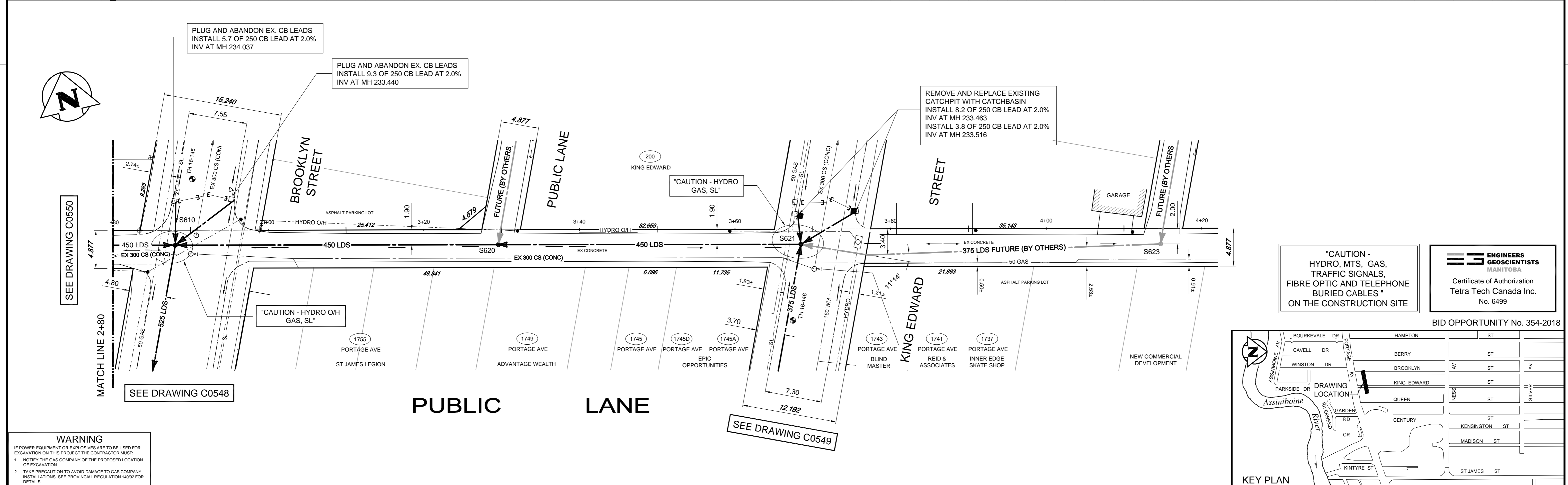


- CONSTRUCTION NOTES:**
1. LOCATION OF ALL SEWER AND WATER LINES CONFIRMED IN THE FIELD.
 2. SEWER AND WATER SERVICES SHOWN ON DRAWINGS ARE APPROXIMATE ONLY.
 3. INSTALL NEW SEWER AND CATCHBASIN LEADS BY TRENCHLESS METHODS, UNLESS NOTED OTHERWISE.
 4. INSTALLED TYPE 'B' RISERS ON CATCHBASIN LEADS AS DIRECTED BY THE CONTRACT ADMINISTRATOR.

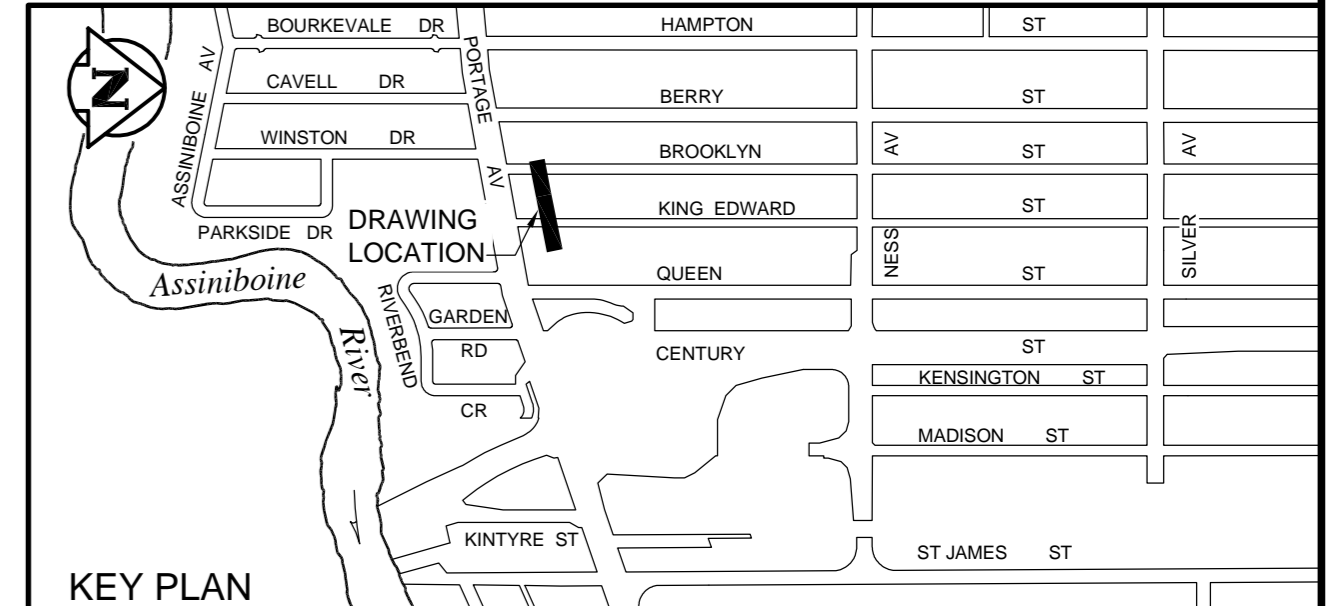
- GENERAL NOTES:**
1. CHAINAGE IS ALONG NORTH LIMIT OF PUBLIC LANE.
 2. STATION 2+00 = NORTH LIMIT OF PUBLIC LANE AND WEST LIMIT OF BERRY STREET.
 3. SEE SPECIFICATIONS FOR DETAILED TEST HOLE INFORMATION.



"CAUTION - HYDRO, MTS, GAS, TRAFFIC SIGNALS, FIBRE OPTIC AND TELEPHONE BURIED CABLES" ON THE CONSTRUCTION SITE

ENGINEERS GEOSCIENTISTS MANITOBA
 Certificate of Authorization
 Tetra Tech Canada Inc.
 No. 6499

BID OPPORTUNITY No. 354-2018



WARNING
 IF POWER EQUIPMENT OR EXPLOSIVES ARE TO BE USED FOR EXCAVATION ON THIS PROJECT THE CONTRACTOR MUST:
 1. NOTIFY THE GAS COMPANY OF THE PROPOSED LOCATION OF EXCAVATION.
 2. TAKE PRECAUTION TO AVOID DAMAGE TO GAS COMPANY INSTALLATIONS. SEE PROVINCIAL REGULATION 140/92 FOR DETAILS.

EXISTING	LEGEND-PLAN	PROPOSED	EXISTING	LEGEND-PLAN	PROPOSED	EXISTING	LEGEND-PLAN	PROPOSED
150 WM	WATERMAIN	150 WM	BEND	ANCHOR	ANCHOR	150 WM	WATERMAIN	150 WM
400 FM	FEEDERMAIN	400 FM	TEE	TREE	TREE	400 FM	FEEDERMAIN	400 FM
300 LDS	LAND DRAINAGE SEWER	300 LDS	CURB STOP	LEGAL DIMENSION	LEGAL DIMENSION	300 LDS	LAND DRAINAGE SEWER	300 LDS
250 WWS	WASTEWATER SEWER	250 WWS	PLUG	SURVEY BAR	SURVEY BAR	250 WWS	WASTEWATER SEWER	250 WWS
300 CS	COMBINED SEWER	300 CS	MANHOLE	TRAFFIC SIGNAL	TRAFFIC SIGNAL	300 CS	COMBINED SEWER	300 CS
200 FCM	FORCEMAIN	200 FCM	CATCHBASIN	GAS	GAS	200 FCM	FORCEMAIN	200 FCM
JUNCTIONS	JUNCTIONS	JUNCTIONS	CURB INLET	HYDRO	HYDRO	JUNCTIONS	JUNCTIONS	JUNCTIONS
HYDRANT	HYDRANT	HYDRANT	ADDRESS	MTS	MTS	HYDRANT	HYDRANT	HYDRANT
VALVE	VALVE	VALVE	HYDRO POLE	SIDEWALK	SIDEWALK	VALVE	VALVE	VALVE
REDUCER	REDUCER	REDUCER	LIGHT STANDARD	CURB	CURB	REDUCER	REDUCER	REDUCER

LOCATION APPROVED UNDERGROUND STRUCTURES

SUPV. U/G STRUCTURES COMMITTEE DATE

NOTE:
 LOCATION OF UNDERGROUND STRUCTURES AS SHOWN ARE BASED ON THE BEST INFORMATION AVAILABLE. BUT NO GUARANTEE IS GIVEN THAT ALL EXISTING UTILITIES ARE SHOWN OR THAT THE GIVEN LOCATIONS ARE EXACT. CONFIRMATION OF EXISTENCE AND EXACT LOCATION OF ALL SERVICES MUST BE OBTAINED FROM THE INDIVIDUAL UTILITIES BEFORE PROCEEDING WITH CONSTRUCTION.

NO.	ISSUED FOR TENDER	18.05.29	KJM
00	ISSUED FOR TENDER	18.05.29	KJM
NO.	REVISIONS	DATE	BY

TETRA TECH

DESIGNED BY: GWC
 CHECKED BY: [Signature]
 DRAWN BY: NL
 APPROVED BY: [Signature]
 HOR. SCALE: 1:250
 VERTICAL: 1:50
 RELEASED FOR CONSTRUCTION: KAS ZUREK
 DATE: 2017.11.01
 DATE: 18/05/24

PROVINCE OF MANITOBA
 K.J. McRAE
 REGISTERED PROFESSIONAL ENGINEER

THE CITY OF WINNIPEG
 WATER AND WASTE DEPARTMENT

FERRY ROAD AND RIVERBEND
 COMBINED SEWER RELIEF WORKS
 CONTRACT 5E-3

LANE NORTH OF PORTAGE AVENUE
 14m WEST OF BROOKLYN STREET TO
 FIRST NORTH/SOUTH LANE EAST OF KING EDWARD ST

CITY DRAWING NUMBER: LD-8453
 SHEET: 16 OF 17
 C0551