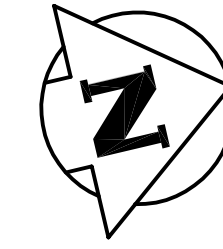
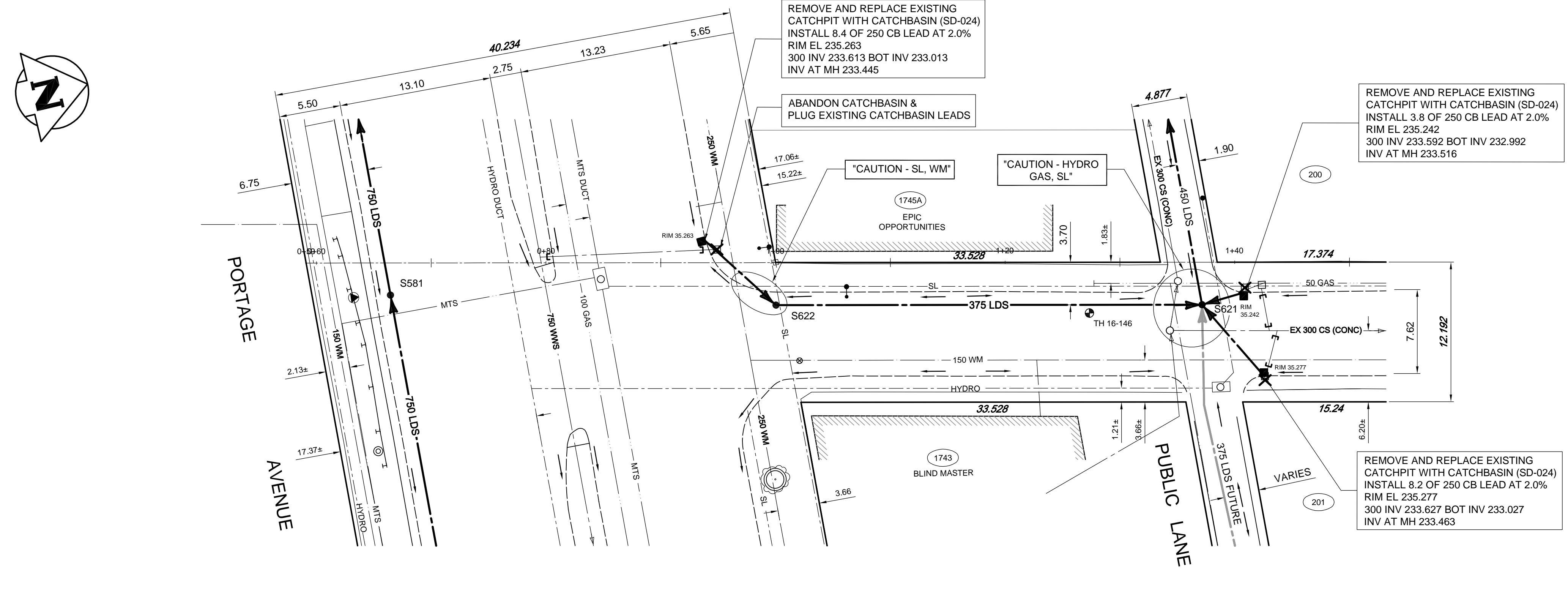


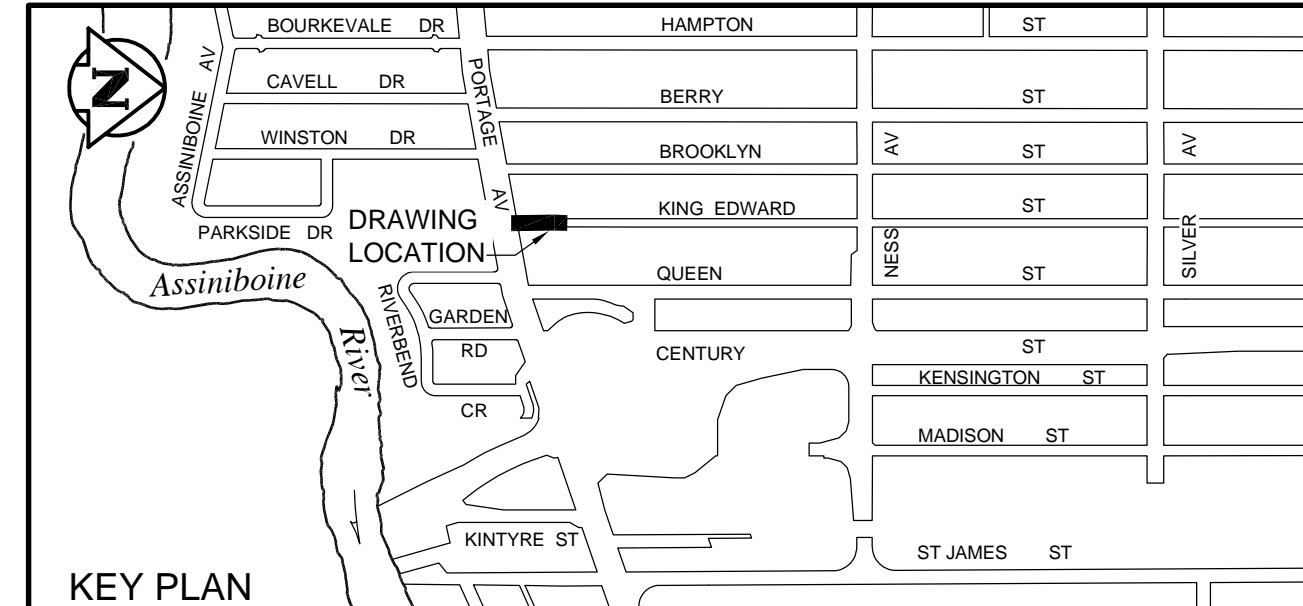
- CONSTRUCTION NOTES:**
1. LOCATION OF ALL SEWER AND WATER LINES CONFIRMED IN THE FIELD.
  2. SEWER AND WATER SERVICES SHOWN ON DRAWINGS ARE APPROXIMATE ONLY.
  3. INSTALL NEW SEWER AND CATCHBASIN LEADS BY TRENCHLESS METHODS, UNLESS NOTED OTHERWISE.
  4. INSTALLED TYPE 'B' RISERS ON CATCHBASIN LEADS AS DIRECTED BY THE CONTRACT ADMINISTRATOR.
- GENERAL NOTES:**
1. CHAINAGE IS ALONG WEST LIMIT OF BROOKLYN STREET.
  2. STATION 1+00 = NORTH WEST LIMIT OF PORTAGE AVENUE AND WEST LIMIT OF BROOKLYN STREET.
  3. SEE SPECIFICATIONS FOR DETAILED TEST HOLE INFORMATION.



"CAUTION - HYDRO, MTS, GAS, TRAFFIC SIGNALS, FIBRE OPTIC AND TELEPHONE BURIED CABLES" ON THE CONSTRUCTION SITE

**ENGINEERS GEOSCIENTISTS MANITOBA**  
Certificate of Authorization  
Tetra Tech Canada Inc.  
No. 6499

BID OPPORTUNITY No. 354-2018



**WARNING**  
IF POWER EQUIPMENT OR EXPLOSIVES ARE TO BE USED FOR EXCAVATION ON THIS PROJECT THE CONTRACTOR MUST:  
1. NOTIFY THE GAS COMPANY OF THE PROPOSED LOCATION OF EXCAVATION.  
2. TAKE PRECAUTION TO AVOID DAMAGE TO GAS COMPANY INSTALLATIONS. SEE PROVINCIAL REGULATION 140/92 FOR DETAILS.

EXISTING	LEGEND-PLAN	PROPOSED	EXISTING	LEGEND-PLAN	PROPOSED	EXISTING	LEGEND-PLAN	PROPOSED
150 WM	WATERMAIN	150 WM	ANCHOR	ANCHOR	ANCHOR	15.240	LEGAL DIMENSION	LEGAL DIMENSION
400 FM	FEEDERMAIN	400 FM	TREE	TREE	TREE			
300 LDS	LAND DRAINAGE SEWER	300 LDS	CURB STOP	CURB STOP	CURB STOP			
250 WWS	WASTEWATER SEWER	250 WWS	PLUG	PLUG	PLUG			
300 CS	COMBINED SEWER	300 CS	MANHOLE	MANHOLE	MANHOLE			
200 FCM	FORCEMAIN	200 FCM	CATCHBASIN	CATCHBASIN	CATCHBASIN			
	JUNCTIONS		CURB INLET	CURB INLET	CURB INLET			
	HYDRANT		ADDRESS	ADDRESS	ADDRESS			
	VALVE		HYDRO POLE	HYDRO POLE	HYDRO POLE			
	REDUCER		LIGHT STANDARD	LIGHT STANDARD	LIGHT STANDARD			

**LOCATION APPROVED UNDERGROUND STRUCTURES**

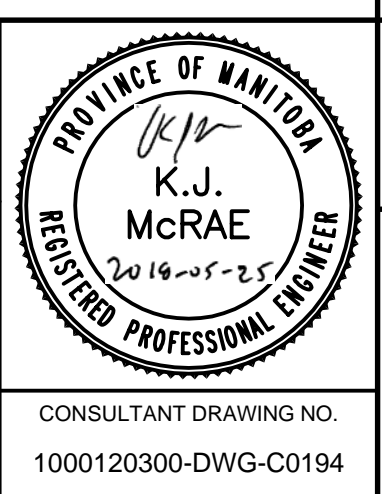
SUPV. U/G STRUCTURES COMMITTEE DATE

NOTE:  
LOCATION OF UNDERGROUND STRUCTURES AS SHOWN ARE BASED ON THE BEST INFORMATION AVAILABLE. BUT NO GUARANTEE IS GIVEN THAT ALL EXISTING UTILITIES ARE SHOWN OR THAT THE GIVEN LOCATIONS ARE EXACT. CONFIRMATION OF EXISTENCE AND EXACT LOCATION OF ALL SERVICES MUST BE OBTAINED FROM THE INDIVIDUAL UTILITIES BEFORE PROCEEDING WITH CONSTRUCTION.

NO.	ISSUED FOR TENDER	18.05.29	KJM
00	ISSUED FOR TENDER	18.05.29	KJM
	REVISIONS	DATE	BY

**TETRA TECH**

DESIGNED BY: GWC  
CHECKED BY: [Signature]  
DRAWN BY: NL  
APPROVED BY: [Signature]  
HOR. SCALE: 1:250  
VERTICAL: 1:50  
RELEASED FOR CONSTRUCTION: KAS ZUREK  
DATE: 2017.11.03



**THE CITY OF WINNIPEG**  
WATER AND WASTE DEPARTMENT

FERRY ROAD AND RIVERBEND  
COMBINED SEWER RELIEF WORKS  
CONTRACT 5E-3

**KING EDWARD STREET**  
PORTAGE AVENUE TO  
PUBLIC LANE NORTH OF PORTAGE AVENUE

CITY DRAWING NUMBER: LD-8451  
SHEET 14 OF 17  
C0549