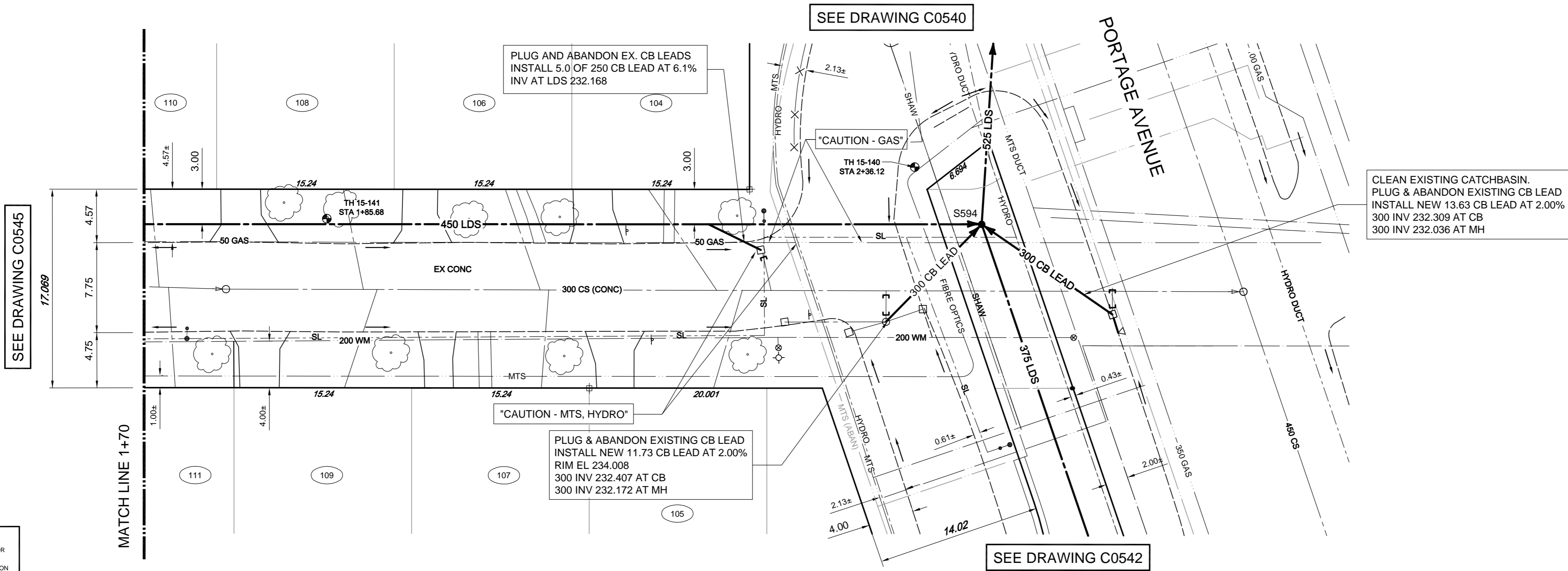
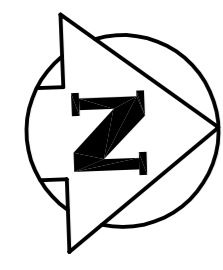


- CONSTRUCTION NOTES:**
1. LOCATION OF ALL SEWER AND WATER LINES TO BE CONFIRMED IN THE FIELD.
  2. SEWER AND WATER SERVICES SHOWN ON DRAWINGS ARE APPROXIMATE ONLY.
  3. INSTALL NEW SEWER AND CATCHBASIN LEADS BY TRENCHLESS METHODS, UNLESS NOTED OTHERWISE.
  4. INSTALL TYPE 'B' RISERS ON CATCHBASIN LEADS AS DIRECTED BY THE CONTRACT ADMINISTRATOR.
  5. CONTRACTOR TO EXPLORE SEWER SERVICE LOCATIONS PRIOR TO CONSTRUCTION OF 200 LDS. SEWER MAY BE LOWERED TO AVOID SEWER SERVICES.

- GENERAL NOTES:**
1. CHAINAGE IS ALONG WEST LIMIT OF RIVERBEND CR E LEG.
  2. STATION 1+00 = WEST LIMIT OF RIVERBEND CR E LEG AND NORTH LIMIT OF RIVERBEND CR S LEG.
  3. SEE SPECIFICATIONS FOR DETAILED TEST HOLE INFORMATION.



SEE DRAWING C0545

SEE DRAWING C0540

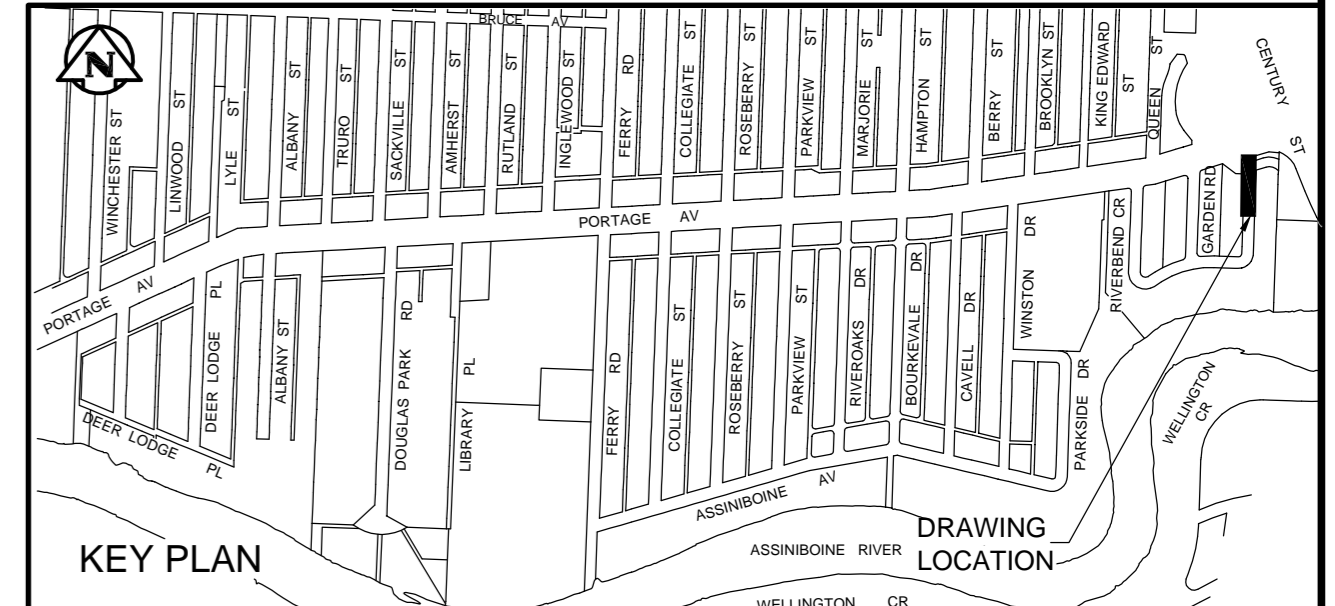
SEE DRAWING C0542

CLEAN EXISTING CATCHBASIN. PLUG & ABANDON EXISTING CB LEAD. INSTALL NEW 13.63 CB LEAD AT 2.00% 300 INV 232.309 AT CB 300 INV 232.036 AT MH

"CAUTION - HYDRO, MTS, GAS, TRAFFIC SIGNALS, FIBRE OPTIC AND TELEPHONE BURIED CABLES" ON THE CONSTRUCTION SITE

**ENGINEERS GEOSCIENTISTS MANITOBA**  
 Certificate of Authorization  
 Tetra Tech Canada Inc.  
 No. 6499

BID OPPORTUNITY No. 354-2018



**RIVERBEND CR EAST LEG**

**WARNING**  
 IF POWER EQUIPMENT OR EXPLOSIVES ARE TO BE USED FOR EXCAVATION ON THIS PROJECT THE CONTRACTOR MUST:  
 1. NOTIFY THE GAS COMPANY OF THE PROPOSED LOCATION OF EXCAVATION.  
 2. TAKE PRECAUTION TO AVOID DAMAGE TO GAS COMPANY INSTALLATIONS. SEE PROVINCIAL REGULATION 140/92 FOR DETAILS.

EXISTING	LEGEND-PLAN	PROPOSED	EXISTING	LEGEND-PLAN	PROPOSED	EXISTING	LEGEND-PLAN	PROPOSED
150 WM	WATERMAIN	150 WM	BEND			ANCHOR		
400 FM	FEEDERMAIN	400 FM	TEE			TREE		
300 LDS	LAND DRAINAGE SEWER	300 LDS	CURB STOP		15.240	LEGAL DIMENSION		
250 WWS	WASTEWATER SEWER	250 WWS	PLUG			SURVEY BAR		
300 CS	COMBINED SEWER	300 CS	MANHOLE			TRAFFIC SIGNAL		
200 FCM	FORCEMAIN	200 FCM	CATCHBASIN			GAS		
	JUNCTIONS		CURB INLET			HYDRO		
	HYDRANT		ADDRESS			MTS		
	VALVE		HYDRO POLE			SIDEWALK		
	REDUCER		LIGHT STANDARD			CURB		

**LOCATION APPROVED UNDERGROUND STRUCTURES**

SUPV. U/G STRUCTURES COMMITTEE	DATE

**NOTE:**  
 LOCATION OF UNDERGROUND STRUCTURES AS SHOWN ARE BASED ON THE BEST INFORMATION AVAILABLE. BUT NO GUARANTEE IS GIVEN THAT ALL EXISTING UTILITIES ARE SHOWN OR THAT THE GIVEN LOCATIONS ARE EXACT. CONFIRMATION OF EXISTENCE AND EXACT LOCATION OF ALL SERVICES MUST BE OBTAINED FROM THE INDIVIDUAL UTILITIES BEFORE PROCEEDING WITH CONSTRUCTION.

B.M. CITY OF WINNIPEG 38-089  
 ELEV. 233.792m

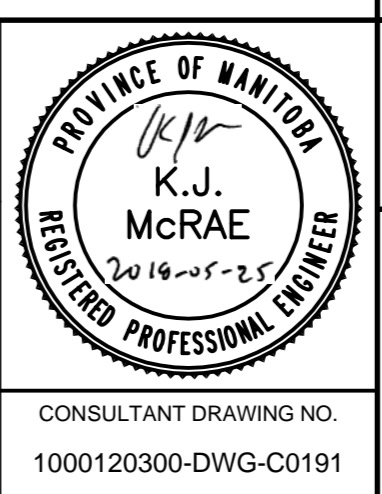
NO.	ISSUED FOR TENDER	DATE	BY
00	ISSUED FOR TENDER	18.05.29	KJM

DESIGNED BY	CHECKED BY
KJM	KJM

DRAWN BY	APPROVED BY
NL	GS

HOR. SCALE:	VERTICAL:
1 : 250	1 : 50

RELEASED FOR CONSTRUCTION	DATE
KAS ZUREK	18/05/24



**THE CITY OF WINNIPEG**  
 WATER AND WASTE DEPARTMENT

FERRY ROAD AND RIVERBEND COMBINED SEWER RELIEF WORKS  
 CONTRACT 5E-3

**RIVERBEND CRESCENT (EAST LEG)**  
 70m NORTH OF RIVERBEND CRESCENT (S LEG) TO PORTAGE AVENUE

CITY DRAWING NUMBER **LD-8448**  
 SHEET **11** OF **17**

**C0546**