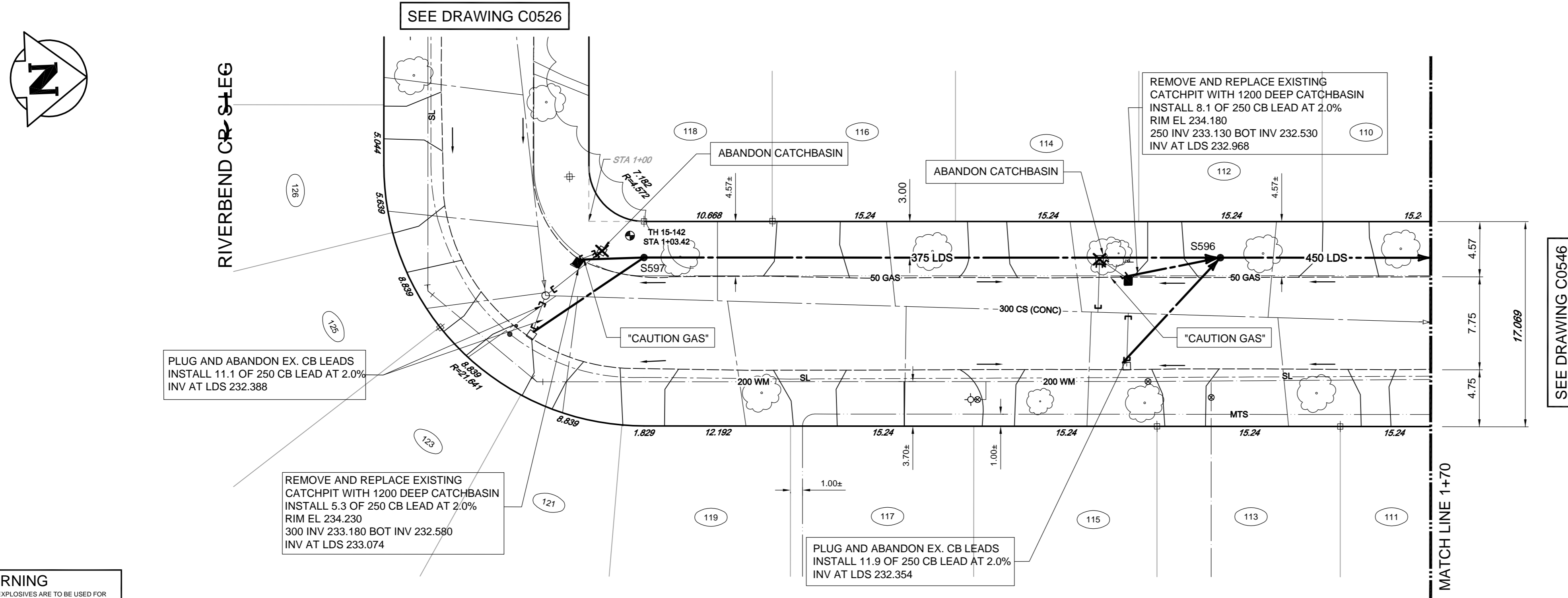


- CONSTRUCTION NOTES:**
1. LOCATION OF ALL SEWER AND WATER LINES TO BE CONFIRMED IN THE FIELD.
  2. SEWER AND WATER SERVICES SHOWN ON DRAWINGS ARE APPROXIMATE ONLY.
  3. INSTALL NEW SEWER AND CATCHBASIN LEADS BY TRENCHLESS METHODS, UNLESS NOTED OTHERWISE.
  4. INSTALL TYPE 'B' RISERS ON CATCHBASIN LEADS AS DIRECTED BY THE CONTRACT ADMINISTRATOR.
  5. CONTRACTOR TO EXPLORE SEWER SERVICE LOCATIONS PRIOR TO CONSTRUCTION OF 200 LDS. SEWER MAY BE LOWERED TO AVOID SEWER SERVICES.

- GENERAL NOTES:**
1. CHAINAGE IS ALONG WEST LIMIT OF RIVERBEND CR E LEG.
  2. STATION 1+00 = WEST LIMIT OF RIVERBEND CR E LEG AND NORTH LIMIT OF RIVERBEND CR S LEG.
  3. SEE SPECIFICATIONS FOR DETAILED TEST HOLE INFORMATION.

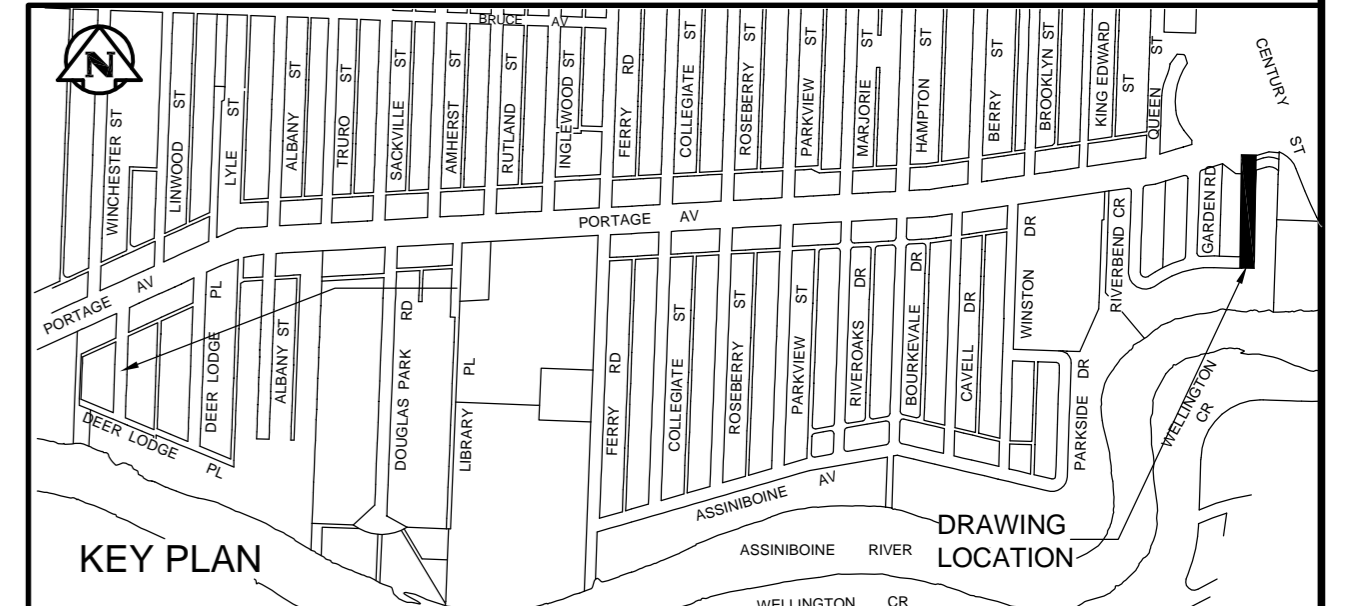


**WARNING**  
IF POWER EQUIPMENT OR EXPLOSIVES ARE TO BE USED FOR EXCAVATION ON THIS PROJECT THE CONTRACTOR MUST:  
1. NOTIFY THE GAS COMPANY OF THE PROPOSED LOCATION OF EXCAVATION.  
2. TAKE PRECAUTION TO AVOID DAMAGE TO GAS COMPANY INSTALLATIONS. SEE PROVINCIAL REGULATION 140/92 FOR DETAILS.

"CAUTION - HYDRO, MTS, GAS, TRAFFIC SIGNALS, FIBRE OPTIC AND TELEPHONE BURIED CABLES" ON THE CONSTRUCTION SITE

**ENGINEERS GEOSCIENTISTS MANITOBA**  
Certificate of Authorization  
Tetra Tech Canada Inc.  
No. 6499

BID OPPORTUNITY No. 354-2018



**RIVERBEND CR EAST LEG**

150 WM	WATERMAIN	150 WM	⌒	BEND	⌒	ANCHOR	
400 FM	FEEDERMAIN	400 FM	⌒	TEE	⌒	TREE	
300 LDS	LAND DRAINAGE SEWER	300 LDS	♂	CURB STOP	15.240	LEGAL DIMENSION	
250 WWS	WASTEWATER SEWER	250 WWS	⌒	PLUG	⌒	SURVEY BAR	
300 CS	COMBINED SEWER	300 CS	○	MANHOLE	⌒	TRAFFIC SIGNAL	
200 FCM	FORCEMAIN	200 FCM	□	CATCHBASIN	⌒	GAS	
+	JUNCTIONS	+	∇	CURB INLET	∇	HYDRO	
⊕	HYDRANT	⊕	⊕	ADDRESS	⊕	MTS	
⊕	VALVE	⊕	⊕	HYDRO POLE	⊕	SIDEWALK	
⌒	REDUCER	⌒	⌒	LIGHT STANDARD	⌒	CURB	
EXISTING	LEGEND-PLAN	PROPOSED	EXISTING	LEGEND-PLAN	PROPOSED	EXISTING	LEGEND-PLAN

**LOCATION APPROVED UNDERGROUND STRUCTURES**

SUPV. U/G STRUCTURES COMMITTEE DATE

NOTE:  
LOCATION OF UNDERGROUND STRUCTURES AS SHOWN ARE BASED ON THE BEST INFORMATION AVAILABLE. BUT NO GUARANTEE IS GIVEN THAT ALL EXISTING UTILITIES ARE SHOWN OR THAT THE GIVEN LOCATIONS ARE EXACT. CONFIRMATION OF EXISTENCE AND EXACT LOCATION OF ALL SERVICES MUST BE OBTAINED FROM THE INDIVIDUAL UTILITIES BEFORE PROCEEDING WITH CONSTRUCTION.

B.M. CITY OF WINNIPEG 38-069	ELEV. 233.792m		
00	ISSUED FOR TENDER	18.05.29	KJM
NO.	REVISIONS	DATE	BY
		2015.09.01	

**TETRA TECH**

DESIGNED BY: KJM  
CHECKED BY: KJM  
DRAWN BY: NL  
APPROVED BY: GS

HOR. SCALE: 1:250  
VERTICAL: 1:50

RELEASED FOR CONSTRUCTION: KAS ZUREK  
DATE: 18/05/24

PROVINCE OF MANITOBA  
K.J. McRAE  
REGISTERED PROFESSIONAL ENGINEER

CONSULTANT DRAWING NO.  
100120300-DWG-C0190

**THE CITY OF WINNIPEG**  
WATER AND WASTE DEPARTMENT

FERRY ROAD AND RIVERBEND COMBINED SEWER RELIEF WORKS  
CONTRACT 5E-3  
RIVERBEND CRESCENT (EAST LEG)  
RIVERBEND CRESCENT (S LEG) TO 70m NORTH

CITY DRAWING NUMBER  
LD-8447  
SHEET 10 OF 17  
C0545