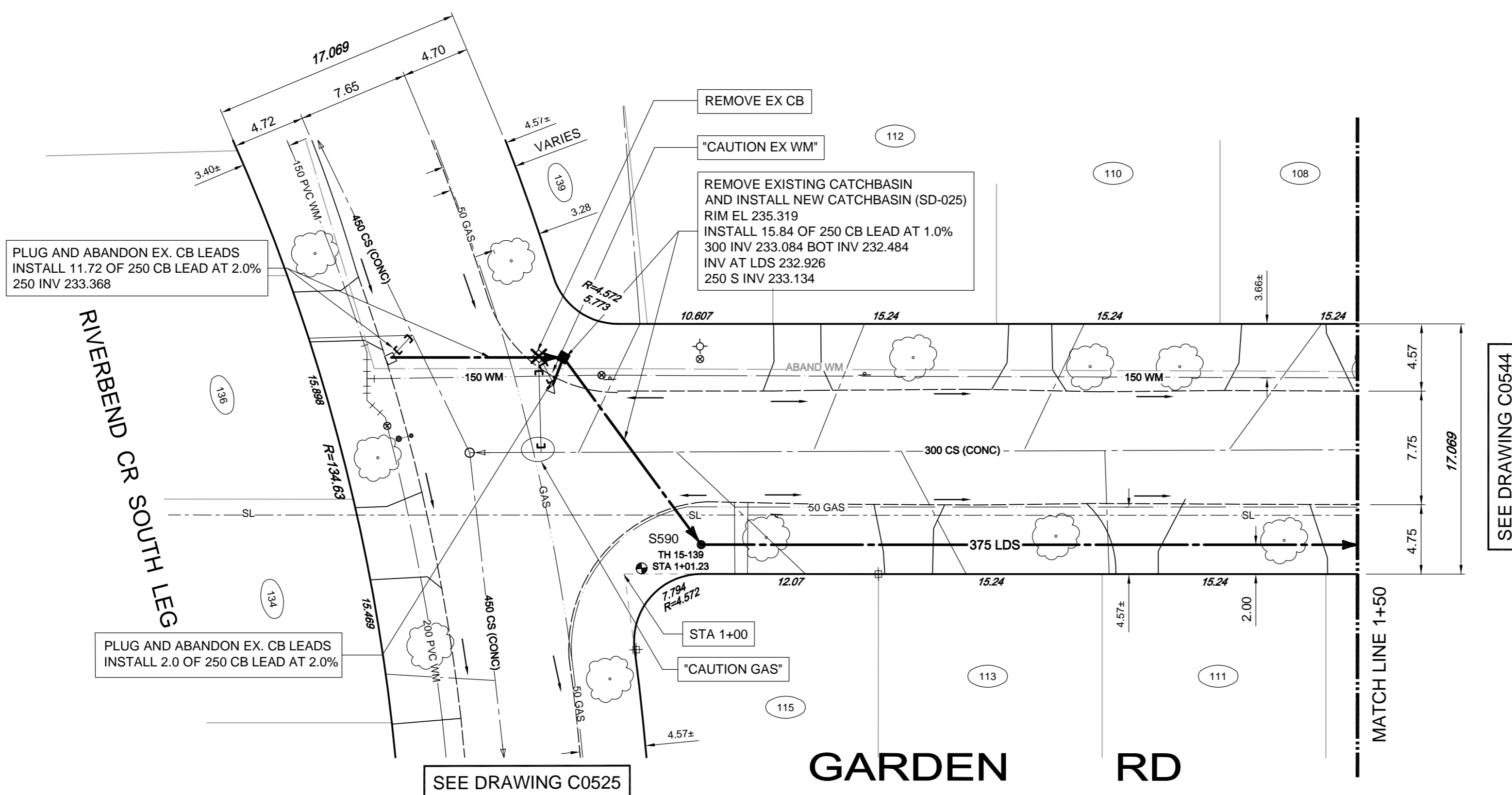
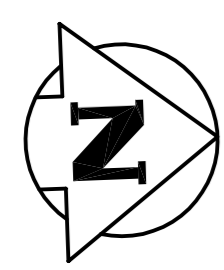


- CONSTRUCTION NOTES:**
1. LOCATION OF ALL SEWER AND WATER LINES TO BE CONFIRMED IN THE FIELD.
 2. SEWER AND WATER SERVICES SHOWN ON DRAWINGS ARE APPROXIMATE ONLY.
 3. INSTALL NEW SEWER AND CATCHBASIN LEADS BY TRENCHLESS METHODS, UNLESS NOTED OTHERWISE.
 4. INSTALL TYPE 'B' RISERS ON CATCHBASIN LEADS AS DIRECTED BY THE CONTRACT ADMINISTRATOR.

- GENERAL NOTES:**
1. CHAINAGE IS ALONG EAST LIMIT OF GARDEN ROAD.
 2. STATION 1+00 = EAST LIMIT OF GARDEN ROAD AND NORTH LIMIT OF RIVERBEND CR SOUTH LEG.
 3. SEE SPECIFICATIONS FOR DETAILED TEST HOLE INFORMATION.

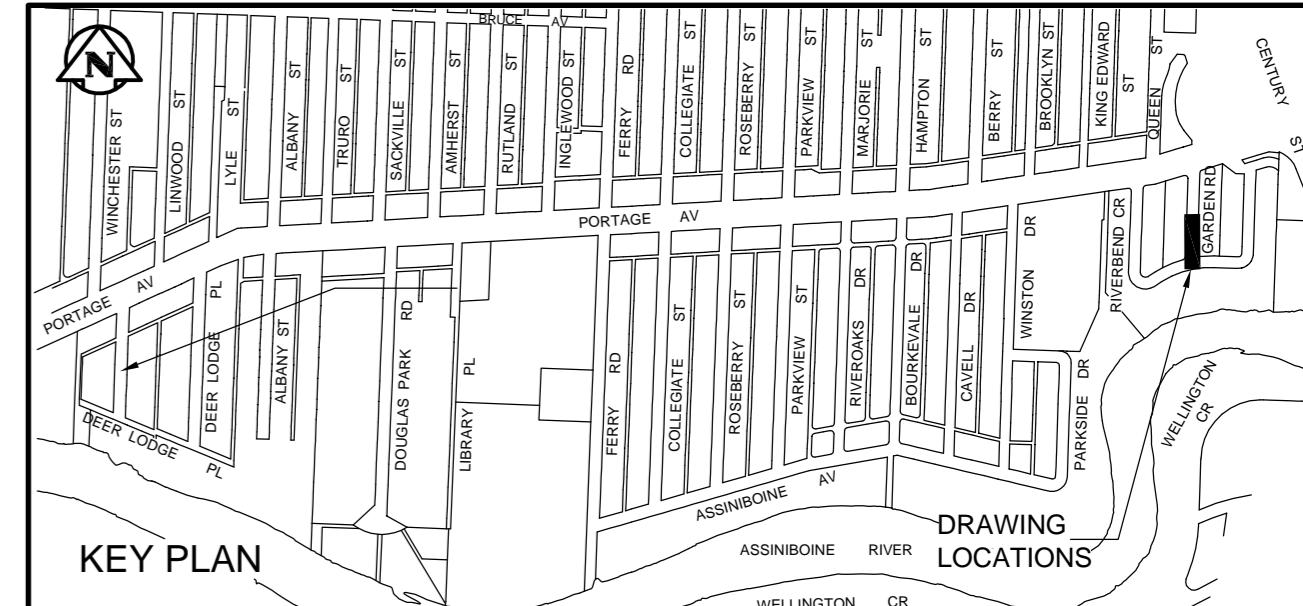


WARNING
IF POWER EQUIPMENT OR EXPLOSIVES ARE TO BE USED FOR EXCAVATION ON THIS PROJECT THE CONTRACTOR MUST:
1. NOTIFY THE GAS COMPANY OF THE PROPOSED LOCATION OF EXCAVATION.
2. TAKE PRECAUTION TO AVOID DAMAGE TO GAS COMPANY INSTALLATIONS. SEE PROVINCIAL REGULATION 140/92 FOR DETAILS.

"CAUTION - HYDRO, MTS, GAS, TRAFFIC SIGNALS, FIBRE OPTIC AND TELEPHONE BURIED CABLES" ON THE CONSTRUCTION SITE

ENGINEERS GEOSCIENTISTS MANITOBA
Certificate of Authorization
Tetra Tech Canada Inc.
No. 6499

BID OPPORTUNITY No. 354-2018



EXISTING	LEGEND-PLAN	PROPOSED	EXISTING	LEGEND-PLAN	PROPOSED	EXISTING	LEGEND-PLAN	PROPOSED
150 WM	WATERMAIN	150 WM	BEND	ANCHOR	LOCATION APPROVED UNDERGROUND STRUCTURES	B.M. CITY OF WINNIPEG 38-089		
400 FM	FEEDERMAIN	400 FM	TEE	TREE		ELEV. 233.792m	DESIGNED BY KJM CHECKED BY KJM DRAWN BY NL APPROVED BY GS HOR. SCALE: 1:250 VERTICAL: 1:50 RELEASED FOR CONSTRUCTION: KAS ZUREK DATE: 2015.09.01 DATE: 18/05/24	
300 LDS	LAND DRAINAGE SEWER	300 LDS	CURB STOP	LEGAL DIMENSION				
250 WWS	WASTEWATER SEWER	250 WWS	PLUG	SURVEY BAR				
300 CS	COMBINED SEWER	300 CS	MANHOLE	TRAFFIC SIGNAL			FERRY ROAD AND RIVERBEND COMBINED SEWER RELIEF WORKS CONTRACT 5E-3 GARDEN ROAD RIVERBEND CRESCENT (SOUTH LEG) TO 50m NORTH	
200 FCM	FORCEMAIN	200 FCM	CATCHBASIN	GAS			CITY DRAWING NUMBER LD-8445 SHEET 8 OF 17	
	JUNCTIONS		CURB INLET	HYDRO			C0543	
	HYDRANT		ADDRESS	MTS				
	VALVE		HYDRO POLE	SIDEWALK				
	REDUCER		LIGHT STANDARD	CURB				

NOTE:
LOCATION OF UNDERGROUND STRUCTURES AS SHOWN ARE BASED ON THE BEST INFORMATION AVAILABLE. BUT NO GUARANTEE IS GIVEN THAT ALL EXISTING UTILITIES ARE SHOWN OR THAT THE GIVEN LOCATIONS ARE EXACT. CONFIRMATION OF EXISTENCE AND EXACT LOCATION OF ALL SERVICES MUST BE OBTAINED FROM THE INDIVIDUAL UTILITIES BEFORE PROCEEDING WITH CONSTRUCTION.

NO.	ISSUED FOR TENDER	18.05.29	KJM
	REVISIONS	DATE	BY

NO.	ISSUED FOR TENDER	18.05.29	KJM
	REVISIONS	DATE	BY

CONSULTANT DRAWING NO. 1000120300-DWG-C0188

THE CITY OF WINNIPEG
WATER AND WASTE DEPARTMENT

FERRY ROAD AND RIVERBEND COMBINED SEWER RELIEF WORKS
CONTRACT 5E-3
GARDEN ROAD
RIVERBEND CRESCENT (SOUTH LEG) TO 50m NORTH

CITY DRAWING NUMBER LD-8445
SHEET 8 OF 17
C0543