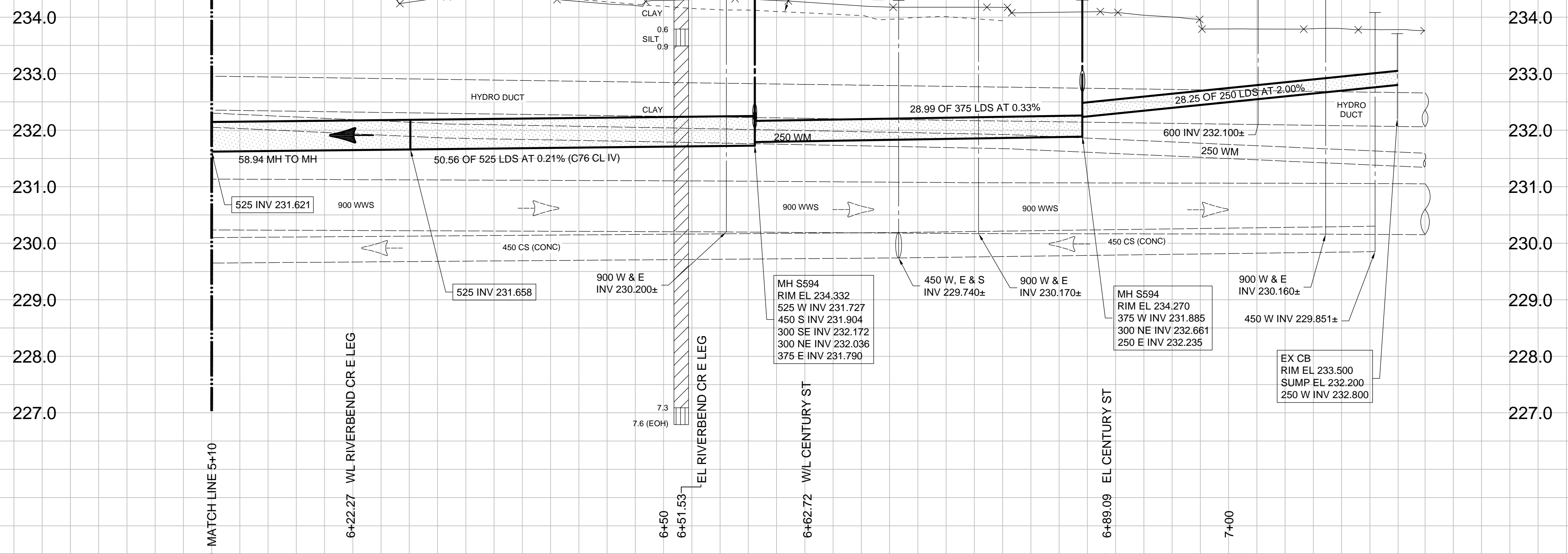
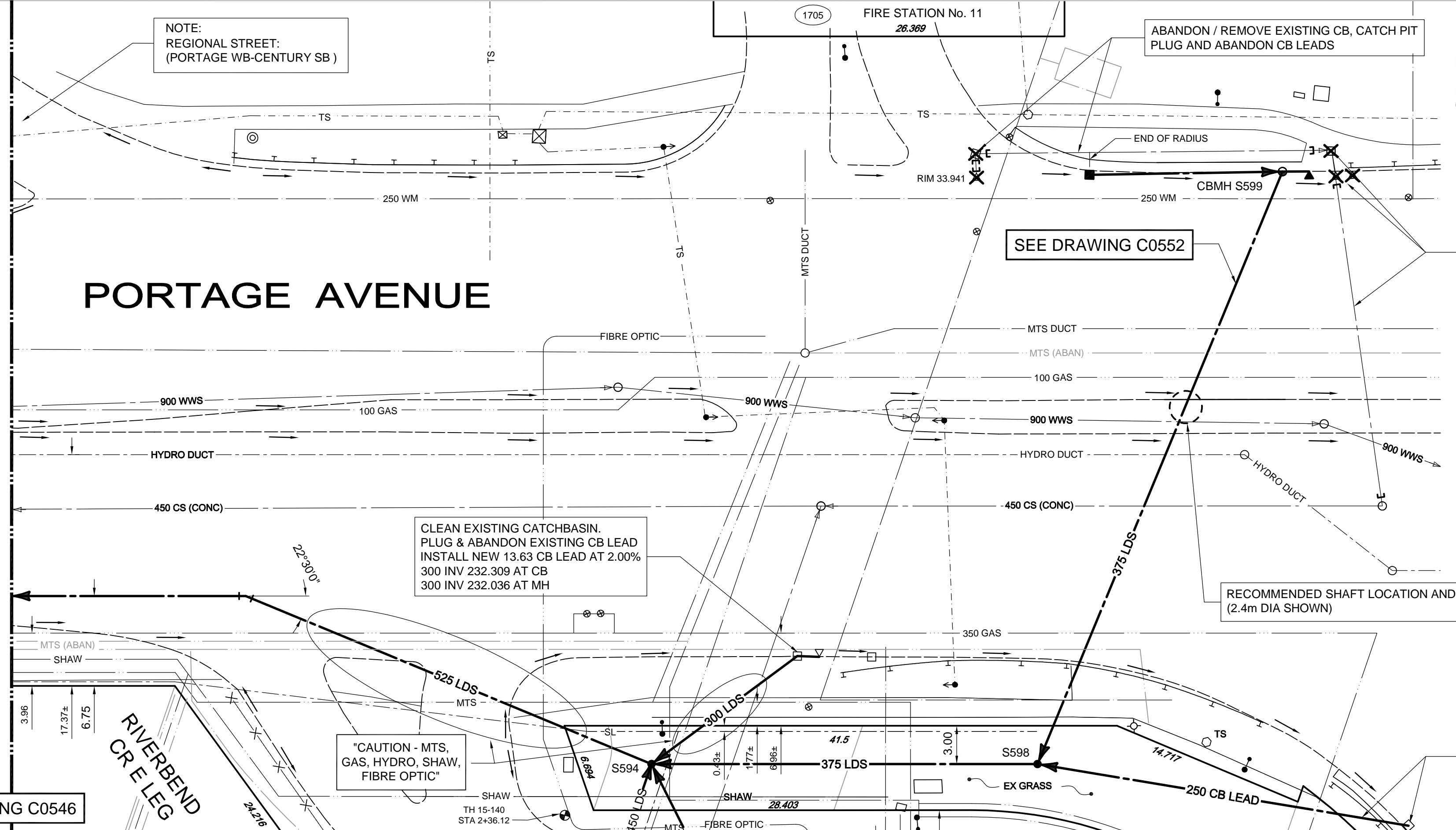


NOTE:
EXACT DEPTH OF EXISTING
250 WATERMAIN UNKNOWN.



NOTE:
REGIONAL STREET:
(PORTAGE WB-CENTURY SB)



- CONSTRUCTION NOTES:**
1. LOCATION OF ALL SEWER AND WATER LINES TO BE CONFIRMED IN THE FIELD.
 2. SEWER AND WATER SERVICES SHOWN ON DRAWINGS ARE APPROXIMATE ONLY.
 3. INSTALL NEW SEWER AND CATCHBASIN LEADS BY TRENCHLESS METHODS, UNLESS NOTED OTHERWISE.
 4. INSTALL TYPE 'B' RISERS ON CATCHBASIN LEADS AS DIRECTED BY THE CONTRACT ADMINISTRATOR.

- GENERAL NOTES:**
1. CHAINAGE IS ALONG SOUTH LIMIT OF PORTAGE AVE.
 2. STATION 3+00 = WEST LIMIT OF WINSTON RD AND SOUTH LIMIT OF PORTAGE AVE.
 3. SEE SPECIFICATIONS FOR DETAILED TEST HOLE INFORMATION.

"CAUTION -
HYDRO, MTS, GAS,
TRAFFIC SIGNALS,
FIBRE OPTIC AND TELEPHONE
BURIED CABLES"
ON THE CONSTRUCTION SITE

**ENGINEERS
GEOSCIENTISTS
MANITOBA**
Certificate of Authorization
Tetra Tech Canada Inc.
No. 6499

BID OPPORTUNITY No. 354-2018

WARNING
IF POWER EQUIPMENT OR EXPLOSIVES ARE TO BE USED FOR
EXCAVATION ON THIS PROJECT THE CONTRACTOR MUST:
1. NOTIFY THE GAS COMPANY OF THE PROPOSED LOCATION
OF EXCAVATION.
2. TAKE PRECAUTION TO AVOID DAMAGE TO GAS COMPANY
INSTALLATIONS. SEE PROVINCIAL REGULATION 140/92 FOR
DETAILS.

SEE DRAWING C0546

150 WM	WATERMAIN	150 WM	TEE	ANCHOR
400 FM	FEEDERMAIN	400 FM	CURB STOP	TREE
300 LDS	LAND DRAINAGE SEWER	300 LDS	PLUG	LEGAL DIMENSION
250 WWS	WASTEWATER SEWER	250 WWS	MANHOLE	SURVEY BAR
300 CS	COMBINED SEWER	300 CS	CATCHBASIN	TRAFFIC SIGNAL
200 FCM	FORCEMAIN	200 FCM	CURB INLET	GAS
	JUNCTIONS		ADDRESS	HYDRO
	HYDRANT		HYDRO POLE	MTS
	VALVE		LIGHT STANDARD	SIDEWALK
	BEND		O/H SIGN	CURB
EXISTING	LEGEND-PLAN	PROPOSED	EXISTING	LEGEND-PLAN
			PROPOSED	EXISTING
				LEGEND-PLAN
				PROPOSED

**LOCATION APPROVED
UNDERGROUND STRUCTURES**

SUPV. U/G STRUCTURES COMMITTEE	DATE
NOTE: LOCATION OF UNDERGROUND STRUCTURES AS SHOWN ARE BASED ON THE BEST INFORMATION AVAILABLE. BUT NO GUARANTEE IS GIVEN THAT ALL EXISTING UTILITIES ARE SHOWN OR THAT THE GIVEN LOCATIONS ARE EXACT. CONFIRMATION OF EXISTENCE AND EXACT LOCATION OF ALL SERVICES MUST BE OBTAINED FROM THE INDIVIDUAL UTILITIES BEFORE PROCEEDING WITH CONSTRUCTION.	

B.M. CITY OF WINNIPEG 38-089	ELEV. 233.792m	
00 ISSUED FOR TENDER	18.05.29	KJM
NO. REVISIONS	DATE	BY
	2017.11.09	

TETRA TECH

DESIGNED BY	KJM	CHECKED BY	KJM
DRAWN BY	NL	APPROVED BY	GS
HOR. SCALE:	1 : 250	RELEASED FOR CONSTRUCTION	KAS ZUREK
VERTICAL:	1 : 50	DATE	18/05/24

PROVINCE OF MANITOBA
REGISTERED PROFESSIONAL ENGINEER
K.J. McRAE
2016-05-25

THE CITY OF WINNIPEG
WATER AND WASTE DEPARTMENT

FERRY ROAD AND RIVERBEND
COMBINED SEWER RELIEF WORKS
CONTRACT 5E-3

PORTAGE AVENUE
22m EAST OF GARDEN ROAD TO
RIVERBEND CRESCENT EAST LEG

CITY DRAWING NUMBER
LD-8442

SHEET 5 OF 17

C0540