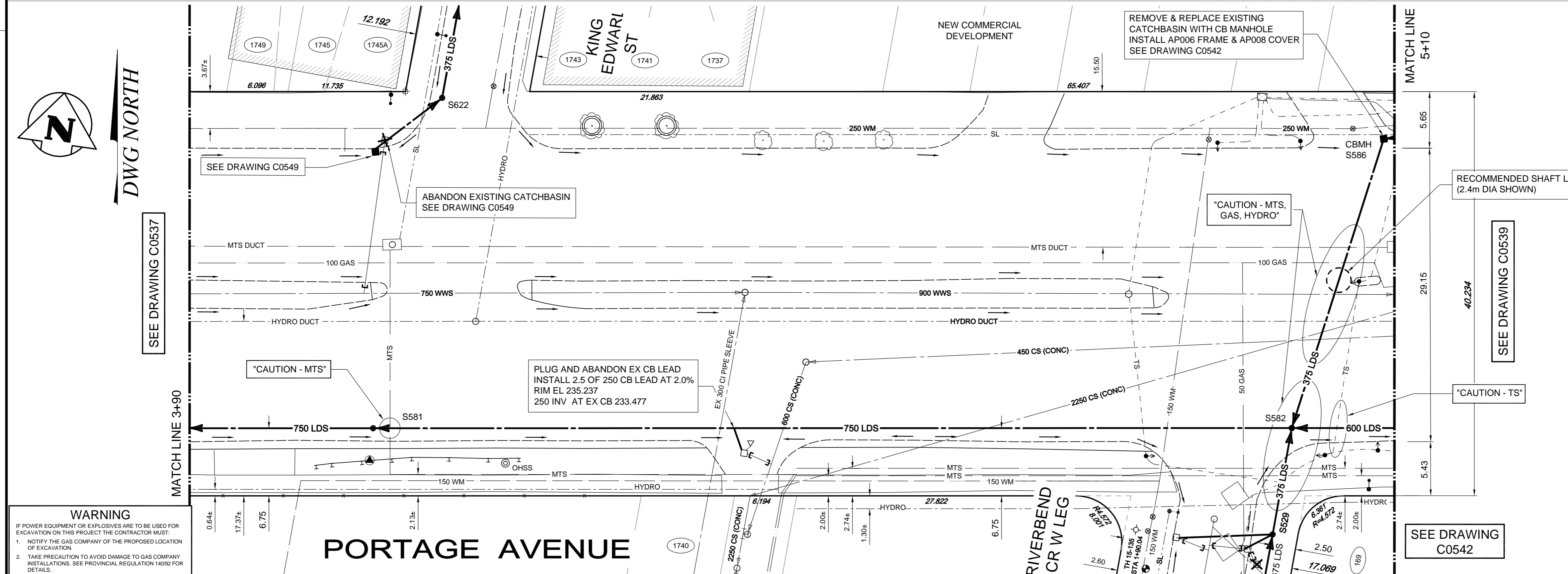


23.26 OF 250 LDS (CBMH TO CBMH) AT 2.00% (PVC DR35)
 234.0
 233.0
 250 INV 232.638
 232.0
 CBMH S586
 RIM EL 234.831
 375 SW INV 232.496
 250 E INV 232.621
 SUMP INV 232.196
 230.0
 229.0
 228.0
 227.0



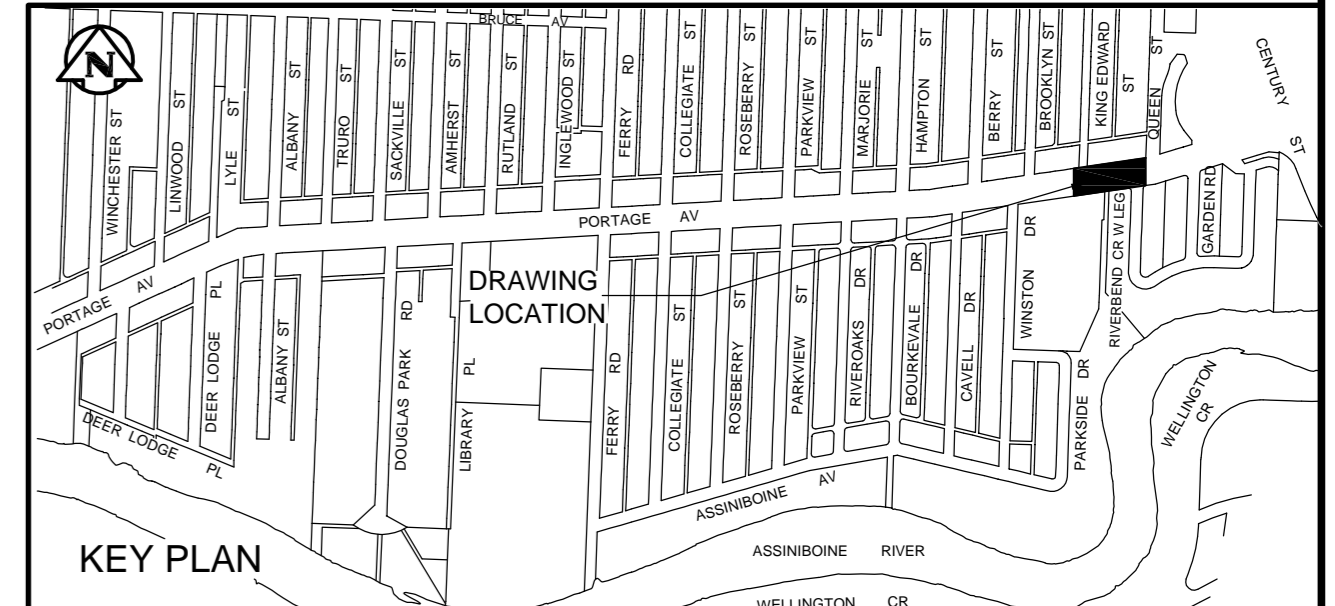
- CONSTRUCTION NOTES:**
1. LOCATION OF ALL SEWER AND WATER LINES TO BE CONFIRMED IN THE FIELD.
 2. SEWER AND WATER SERVICES SHOWN ON DRAWINGS ARE APPROXIMATE ONLY.
 3. INSTALL NEW SEWER AND CATCHBASIN LEADS BY TRENCHLESS METHODS, UNLESS NOTED OTHERWISE.
 4. INSTALL TYPE 'B' RISERS ON CATCHBASIN LEADS AS DIRECTED BY THE CONTRACT ADMINISTRATOR.

- GENERAL NOTES:**
1. CHAINAGE IS ALONG SOUTH LIMIT OF PORTAGE AVE.
 2. STATION 3+00 = WEST LIMIT OF WINSTON RD AND SOUTH LIMIT OF PORTAGE AVE.
 3. SEE SPECIFICATIONS FOR DETAILED TEST HOLE INFORMATION.

"CAUTION - HYDRO, MTS, GAS, TRAFFIC SIGNALS, FIBRE OPTIC AND TELEPHONE BURIED CABLES" ON THE CONSTRUCTION SITE

ENGINEERS GEOSCIENTISTS MANITOBA
 Certificate of Authorization
 Tetra Tech Canada Inc.
 No. 6499

BID OPPORTUNITY No. 354-2018



WARNING
 IF POWER EQUIPMENT OR EXPLOSIVES ARE TO BE USED FOR EXCAVATION ON THIS PROJECT THE CONTRACTOR MUST:
 1. NOTIFY THE GAS COMPANY OF THE PROPOSED LOCATION OF EXCAVATION.
 2. TAKE PRECAUTION TO AVOID DAMAGE TO GAS COMPANY INSTALLATIONS. SEE PROVINCIAL REGULATION 14092 FOR DETAILS.

150 WM	WATERMAIN	150 WM	TEE	ANCHOR
400 FM	FEEDERMAIN	400 FM	CURB STOP	TREE
300 LDS	LAND DRAINAGE SEWER	300 LDS	PLUG	LEGAL DIMENSION
250 WWS	WASTEWATER SEWER	250 WWS	MANHOLE	SURVEY BAR
300 CS	COMBINED SEWER	300 CS	CATCHBASIN	TRAFFIC SIGNAL
200 FCM	FORCEMAIN	200 FCM	CURB INLET	GAS
	JUNCTIONS		ADDRESS	HYDRO
	HYDRANT		HYDRO POLE	MTS
	VALVE		LIGHT STANDARD	MTS
	BEND		O/H SIGN	CURB
EXISTING	LEGEND-PLAN	PROPOSED	EXISTING	LEGEND-PLAN

LOCATION APPROVED UNDERGROUND STRUCTURES

SUPV. U/G STRUCTURES COMMITTEE	DATE
NOTE: LOCATION OF UNDERGROUND STRUCTURES AS SHOWN ARE BASED ON THE BEST INFORMATION AVAILABLE. BUT NO GUARANTEE IS GIVEN THAT ALL EXISTING UTILITIES ARE SHOWN OR THAT THE GIVEN LOCATIONS ARE EXACT. CONFIRMATION OF EXISTENCE AND EXACT LOCATION OF ALL SERVICES MUST BE OBTAINED FROM THE INDIVIDUAL UTILITIES BEFORE PROCEEDING WITH CONSTRUCTION.	

B.M. CITY OF WINNIPEG 38-089	ELEV. 233.792m		
00	ISSUED FOR TENDER	18.05.29	KJM
NO.	REVISIONS	DATE	BY

TETRA TECH

DESIGNED BY	KJM	CHECKED BY	KJM
DRAWN BY	NL	APPROVED BY	GS
HOR. SCALE:	1 : 250	RELEASED FOR CONSTRUCTION	KAS ZUREK
VERTICAL:	1 : 50	DATE	2017.11.02

PROVINCE OF MANITOBA
K.J. McRAE
 REGISTERED PROFESSIONAL ENGINEER
 CONSULTANT DRAWING NO.
 1000120300-DWG-C0183

THE CITY OF WINNIPEG
 WATER AND WASTE DEPARTMENT

FERRY ROAD AND RIVERBEND
 COMBINED SEWER RELIEF WORKS
 CONTRACT 5E-3
 PORTAGE AVENUE
 90m EAST OF WINSTON ROAD TO
 9m EAST OF RIVERBEND CR W LEG

CITY DRAWING NUMBER
LD-8440
 SHEET **3** OF **17**
C0538