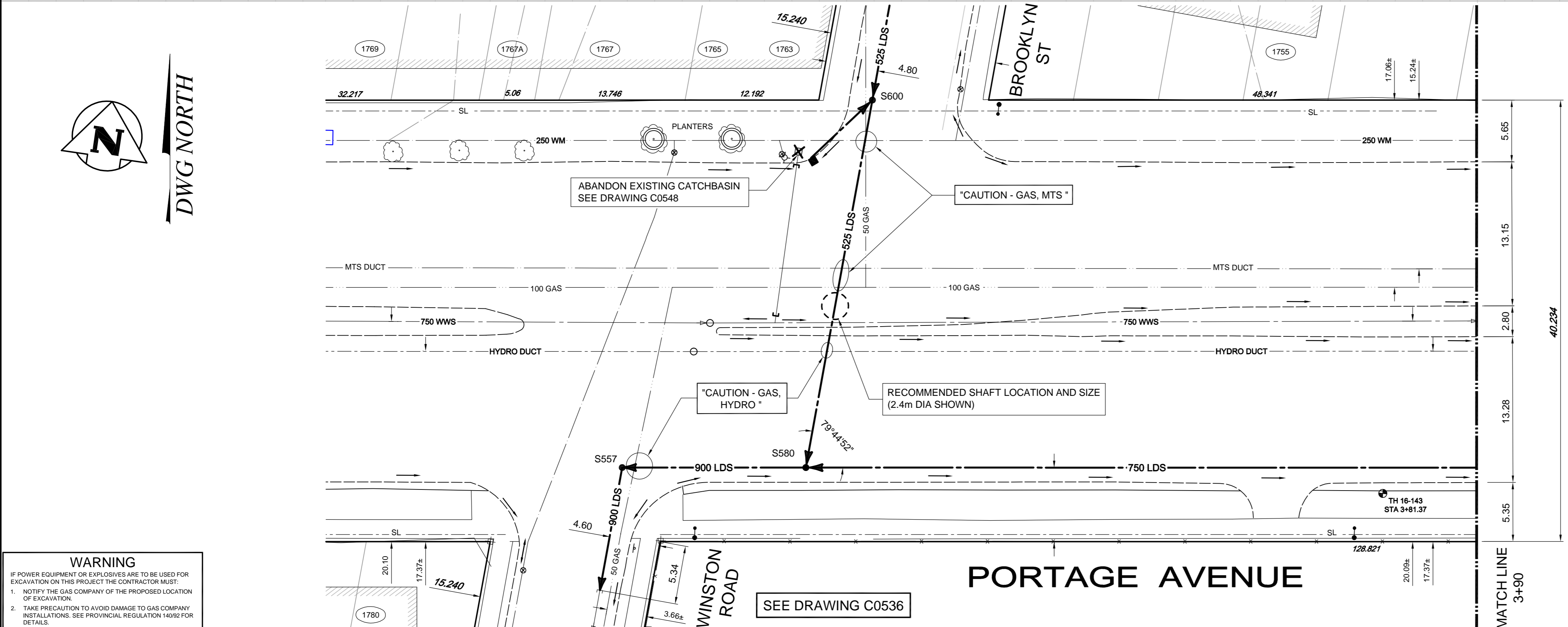


NOTE:  
EXACT DEPTH OF EXISTING  
250 WATERMAIN UNKNOWN.

SEE DRAWING  
C0548

SEE DRAWING C0538



**DWG NORTH**

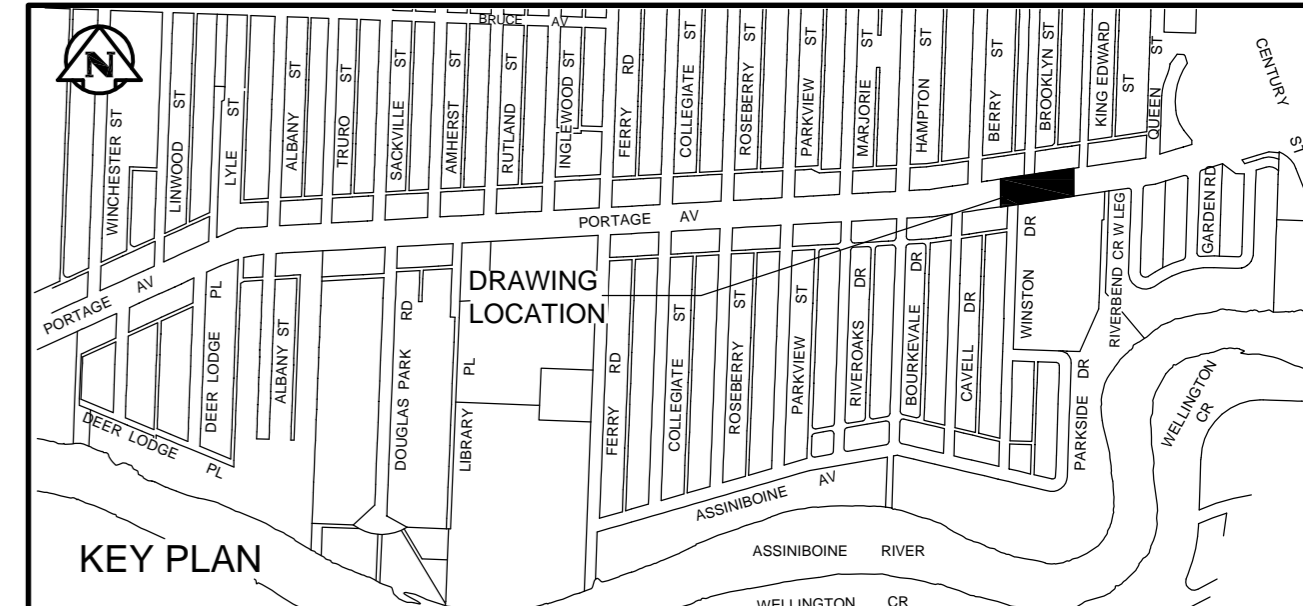
- CONSTRUCTION NOTES:**
1. LOCATION OF ALL SEWER AND WATER LINES TO BE CONFIRMED IN THE FIELD.
  2. SEWER AND WATER SERVICES SHOWN ON DRAWINGS ARE APPROXIMATE ONLY.
  3. INSTALL NEW SEWER AND CATCHBASIN LEADS BY TRENCHLESS METHODS, UNLESS NOTED OTHERWISE.
  4. INSTALL TYPE 'B' RISERS ON CATCHBASIN LEADS AS DIRECTED BY THE CONTRACT ADMINISTRATOR.

- GENERAL NOTES:**
1. CHAINAGE IS ALONG SOUTH LIMIT OF PORTAGE AVE.
  2. STATION 3+00 = WEST LIMIT OF WINSTON RD AND SOUTH LIMIT OF PORTAGE AVE.
  3. SEE SPECIFICATIONS FOR DETAILED TEST HOLE INFORMATION.

"CAUTION -  
HYDRO, MTS, GAS,  
TRAFFIC SIGNALS,  
FIBRE OPTIC AND TELEPHONE  
BURIED CABLES "  
ON THE CONSTRUCTION SITE

**ENGINEERS  
GEOSCIENTISTS  
MANITOBA**  
Certificate of Authorization  
Tetra Tech Canada Inc.  
No. 6499

BID OPPORTUNITY No. 354-2018



**WARNING**  
IF POWER EQUIPMENT OR EXPLOSIVES ARE TO BE USED FOR EXCAVATION ON THIS PROJECT THE CONTRACTOR MUST:  
1. NOTIFY THE GAS COMPANY OF THE PROPOSED LOCATION OF EXCAVATION.  
2. TAKE PRECAUTION TO AVOID DAMAGE TO GAS COMPANY INSTALLATIONS. SEE PROVINCIAL REGULATION 140/92 FOR DETAILS.

EXISTING	LEGEND-PLAN	PROPOSED	EXISTING	LEGEND-PLAN	PROPOSED	EXISTING	LEGEND-PLAN	PROPOSED
150 WM	WATERMAIN	150 WM	TEE	ANCHOR	LOCATION APPROVED UNDERGROUND STRUCTURES	B.M. CITY OF WINNIPEG 38-089		
400 FM	FEEDERMAIN	400 FM	CURB STOP	TREE		ELEV. 233.792m	DESIGNED BY: KJM CHECKED BY: KJM DRAWN BY: NL APPROVED BY: GS HOR. SCALE: 1:250 VERTICAL: 1:50 RELEASED FOR CONSTRUCTION: KAS ZUREK DATE: 2017.11.02 DATE: 18/05/24	
300 LDS	LAND DRAINAGE SEWER	300 LDS	PLUG	LEGAL DIMENSION				
250 WWS	WASTEWATER SEWER	250 WWS	MANHOLE	SURVEY BAR			<b>THE CITY OF WINNIPEG</b> WATER AND WASTE DEPARTMENT FERRY ROAD AND RIVERBEND COMBINED SEWER RELIEF WORKS CONTRACT 5E-3 PORTAGE AVENUE WINSTON ROAD TO 90m EAST OF WINSTON ROAD	
300 CS	COMBINED SEWER	300 CS	CATCHBASIN	TRAFFIC SIGNAL			CITY DRAWING NUMBER: LD-8439 SHEET: 2 OF 17 C0537	
200 FCM	FORCEMAIN	200 FCM	CURB INLET	GAS				
	JUNCTIONS		ADDRESS	HYDRO				
	HYDRANT		HYDRO POLE	MTS				
	VALVE		LIGHT STANDARD	SIDEWALK				
	BEND		O/H SIGN	CURB				

NOTE:  
LOCATION OF UNDERGROUND STRUCTURES AS SHOWN ARE BASED ON THE BEST INFORMATION AVAILABLE. BUT NO GUARANTEE IS GIVEN THAT ALL EXISTING UTILITIES ARE SHOWN OR THAT THE GIVEN LOCATIONS ARE EXACT. CONFIRMATION OF EXISTENCE AND EXACT LOCATION OF ALL SERVICES MUST BE OBTAINED FROM THE INDIVIDUAL UTILITIES BEFORE PROCEEDING WITH CONSTRUCTION.

NO.	ISSUED FOR TENDER	18.05.29	KJM
	REVISIONS	DATE	BY

NO.	ISSUED FOR TENDER	18.05.29	KJM
	REVISIONS	DATE	BY

CONSULTANT DRAWING NO.  
100120300-DWG-C0182

**THE CITY OF WINNIPEG**  
WATER AND WASTE DEPARTMENT

FERRY ROAD AND RIVERBEND  
COMBINED SEWER RELIEF WORKS  
CONTRACT 5E-3  
PORTAGE AVENUE  
WINSTON ROAD TO  
90m EAST OF WINSTON ROAD

CITY DRAWING NUMBER  
LD-8439  
SHEET 2 OF 17  
C0537