

# **APPENDIX 'A'**

## **Standard Construction Details**

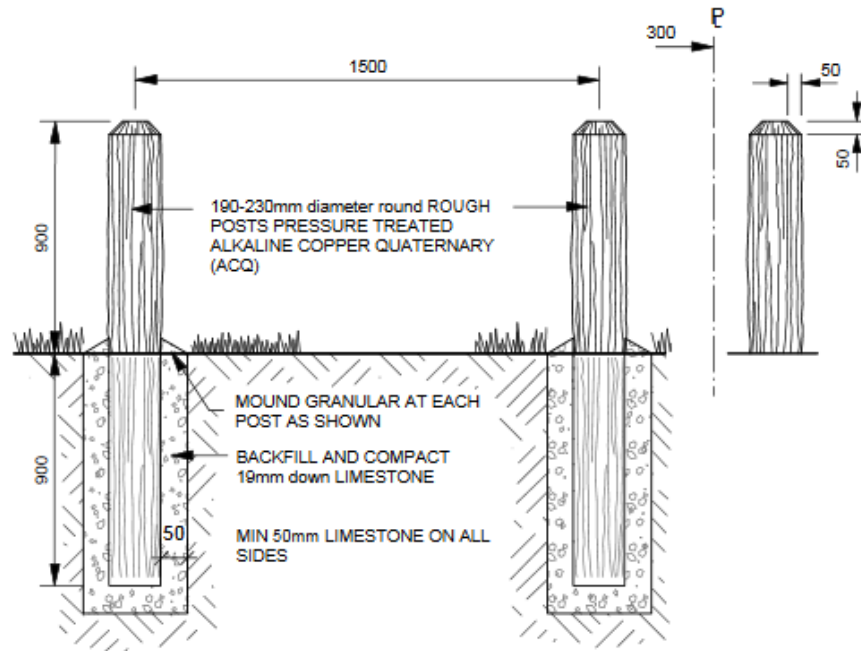
## APPENDIX 'A' - STANDARD CONSTRUCTION DETAILS

Drawing Title:

**POST BOLLARD**

Drawing No:

**SCD-105B**



### NOTE:

- ALL POSTS THOROUGHLY TAMPED AND GRANULAR MOUNDED AT EACH POST FOR FUTURE SETTLING AND DRAINAGE AWAY FROM POST. SURPLUS EARTH TO BE LEGALLY DISPOSED OF.
- FENCE POSTS ARE TO FOLLOW THE NATURAL CONTOUR OF THE LAND EXCEPT FOR SMALL UNDULATIONS WHICH WOULD TEND TO REDUCE THE AESTHETIC APPEARANCE OF THE FINISHED PROJECT.

DIMENSIONS SHOWN ARE IN MILLIMETRES UNLESS OTHERWISE SPECIFIED

REVISION: 3  
DATE: July 12, 2013  
SCALE: N.T.S.  
DRAWN BY: SP

The City of Winnipeg  
Planning, Property and Development Department  
Planning and Land Use Division  
Unit 15 - 30 Fort Street, Winnipeg, MB, R3C 4X5

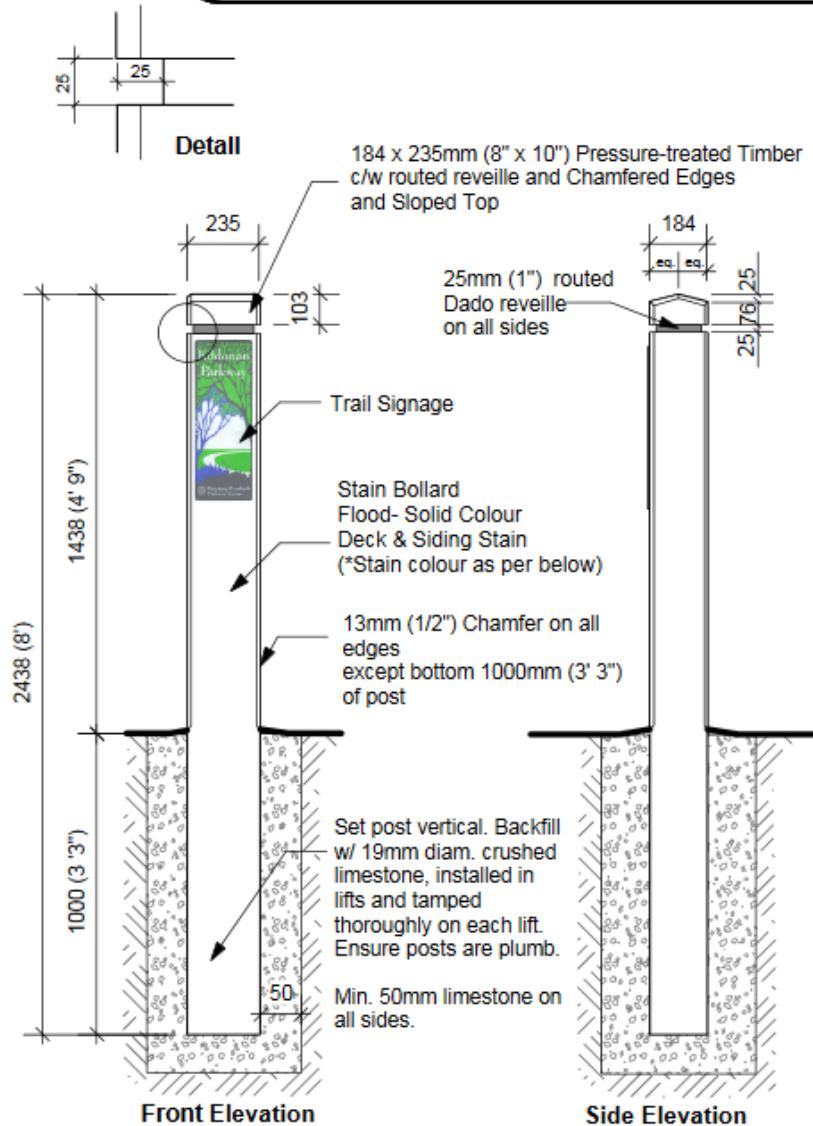


Drawing Title:

**TRAIL BOLLARD**

Drawing No:

**SCD-105D**



**\*Stain: Flood brand Solid Colour Deck & Siding Stain**

**Parkway Bollard:** Colour No. 303 Slate Blue.

**Community Trail Bollard:** Colour No. 428 Pebblestone Clay

DIMENSIONS SHOWN ARE IN MILLIMETRES UNLESS OTHERWISE SPECIFIED

REVISION: 2  
 DATE: December 20, 2012  
 SCALE: N.T.S  
 DRAWN BY:

The City of Winnipeg  
 Planning, Property and Development Department  
 Planning and Land Use Division  
 Unit 15 - 30 Fort Street, Winnipeg, MB, R3C 4X5

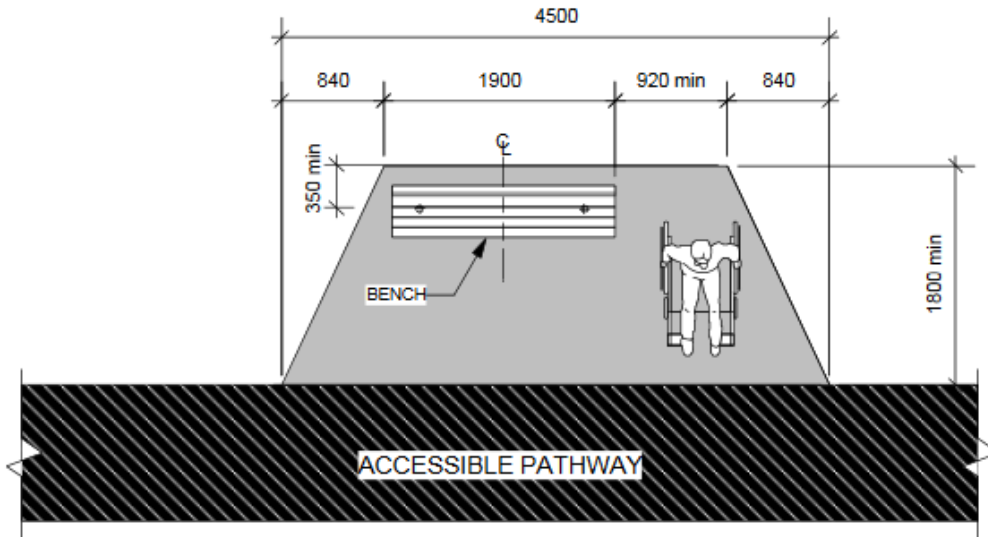


Drawing Title:

**ACCESSIBLE BENCH  
NODE & PICNIC TABLE LAYOUT**

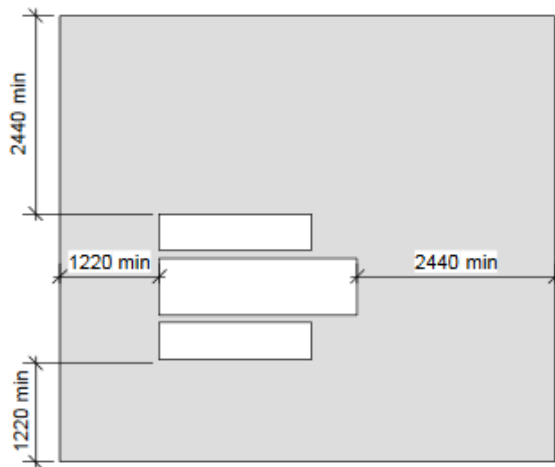
Drawing No:

**SCD-136A**



**ACCESSIBLE BENCH NODE DETAIL**

NTS



ACCESSIBLE PICNIC TABLE  
MUST BE ADJACENT TO AN  
ACCESSIBLE PATHWAY

**PLAN VIEW OF PICNIC TABLE ON GRAVEL BASE**

NTS

DIMENSIONS SHOWN ARE IN MILLIMETRES UNLESS OTHERWISE SPECIFIED

REVISION: 2  
DATE: December 20, 2012  
SCALE: NTS  
DRAWN BY: SP

The City of Winnipeg  
Planning, Property and Development Department  
Planning and Land Use Division  
Unit 15 - 30 Fort Street, Winnipeg, MB, R3C 4X5



**MATERIALS**

**COMPOSITE SLATS:**  
 - 89mm x 89mm COMPOSITE BOARDS  
 - CEDAR TONE FINISH

**METAL OPTIONS:**

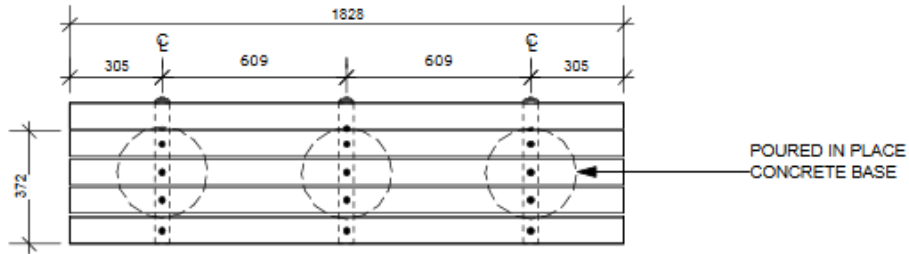
- **BLACK POWDERCOATED** - (Metal suitably cleaned to remove any grease, wax etc. for proper paint bonding to occur. Base coat Zinc rich primer. Baked with a final thickness of paint between 5-8 mil - Product # 52501067
- **GALVANIZED** - Product # 52501067GLV

Drawing Title:

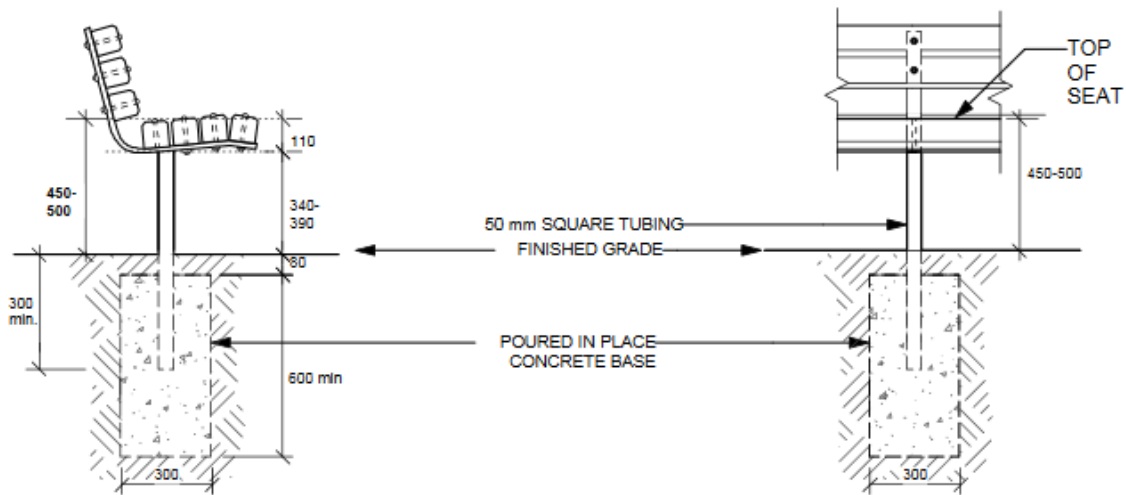
**TACHE BENCH COMPOSITE**

Drawing No:

**SCD-121**



PLAN VIEW



SIDE ELEVATION

FRONT ELEVATION

DIMENSIONS SHOWN ARE IN MILLIMETRES UNLESS OTHERWISE SPECIFIED

REVISION: 2  
 DATE: December 20, 2012  
 SCALE: NTS  
 DRAWN BY: SP

The City of Winnipeg  
 Planning, Property and Development Department  
 Planning and Land Use Division  
 Unit 15 - 30 Fort Street, Winnipeg, MB, R3C 4X5

