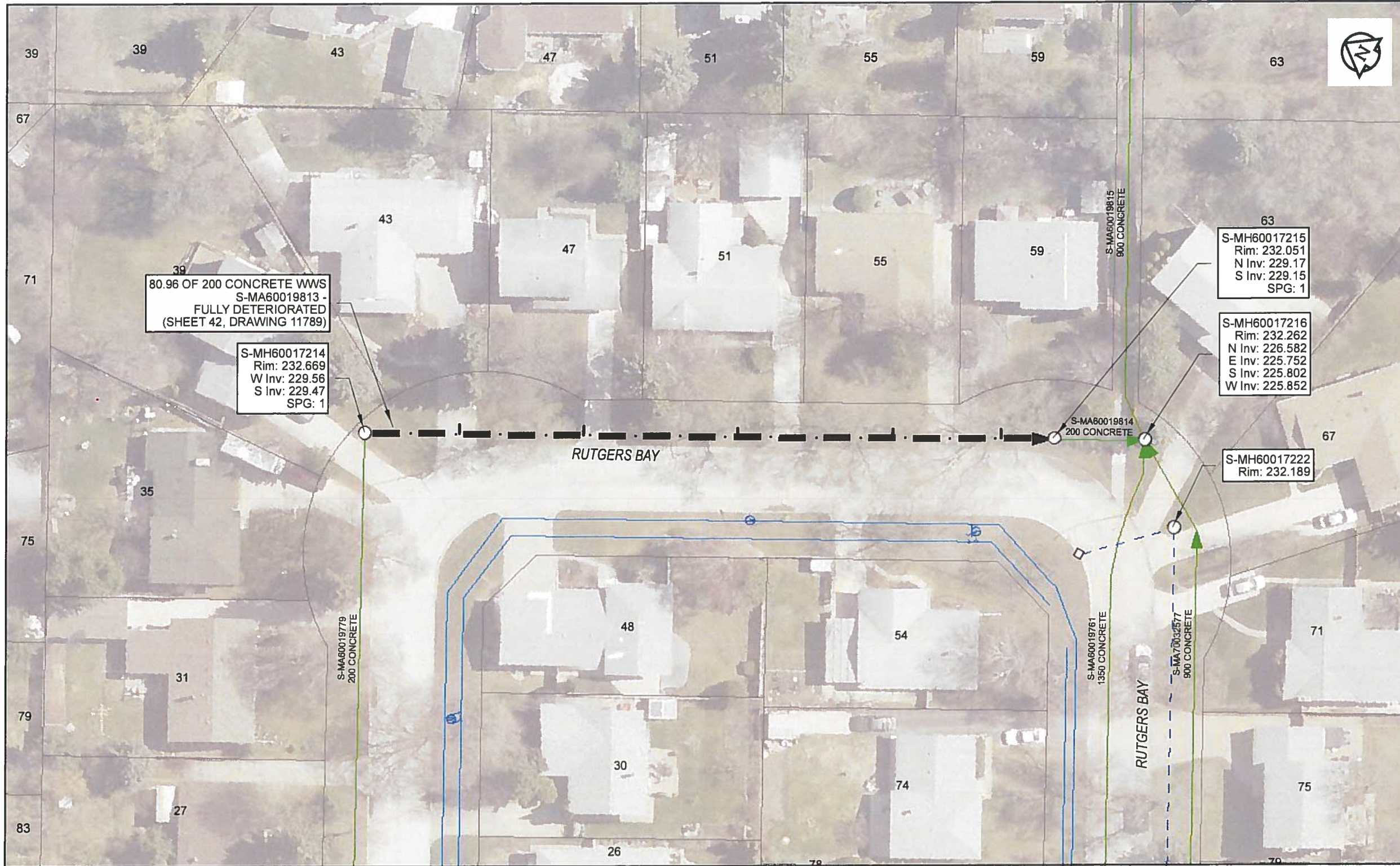


B SIZE 11" X 17" (279mm x 432mm)



**Sewer Junction Information**

(From Video Inspection)

| Reference MH | Distance | Size | Clock |
|--------------|----------|------|-------|
| S-MH60017214 | 011.2    | 100  | 10    |
| -            | 025.8    | 100  | 10    |
| -            | 043.9    | 100  | 08    |
| -            | 062.2    | 100  | 10    |
| -            | 074.9    | 100  | 10    |

80.96 OF 200 CONCRETE WWS  
S-MA60019813 -  
FULLY DETERIORATED  
(SHEET 42, DRAWING 11789)

S-MH60017214  
Rim: 232.669  
W Inv: 229.56  
S Inv: 229.47  
SPG: 1

S-MH60017215  
Rim: 232.051  
N Inv: 229.17  
S Inv: 229.15  
SPG: 1

S-MH60017216  
Rim: 232.262  
N Inv: 226.582  
E Inv: 225.752  
S Inv: 225.802  
W Inv: 225.852

S-MH60017222  
Rim: 232.189

**Traffic Controls**  
Regional Street Lane Closure Required No  
Impacted Regional Street N/A

**General Requirements:**  
Residential Street Restrictions

**WARNING**  
IF POWER EQUIPMENT OR EXPLOSIVES ARE TO BE USED FOR EXCAVATION ON THIS PROJECT, THE CONTRACTOR MUST:  
1) NOTIFY THE GAS COMPANY OF THE PROPOSED LOCATION OF EXCAVATION  
2) TAKE PRECAUTION TO AVOID DAMAGE TO GAS COMPANY INSTALLATIONS.  
SEE PROVINCIAL REGULATION 140/92 FOR DETAILS

**APEGM**  
Certificate of Authorization  
AECOM Canada Ltd.  
No. 4671 Date: May 24/18

**METRIC**  
WHOLE NUMBERS INDICATE MILLIMETRES  
DECIMALIZED NUMBERS INDICATE METRES  
0 2.5 5 10 15 20  
Meters

**RECORD DRAWING**  
BID OPPORTUNITY NO. 224-2018

AECOM REVIEW DRAFT CHK

FILE NAME: 2017\_Lining.mxd SAVED BY: ES

**LOCATION APPROVED UNDERGROUND STRUCTURES**

SUPR. U/G STRUCTURES DATE COMMITTEE

**NOTE:**  
LOCATION OF UNDERGROUND STRUCTURES AS SHOWN ARE BASED ON THE BEST INFORMATION AVAILABLE. BUT NO GUARANTEE IS GIVEN THAT ALL EXISTING UTILITIES ARE SHOWN OR THAT THE GIVEN LOCATIONS ARE EXACT. CONFIRMATION OF EXISTENCE AND EXACT LOCATION OF ALL SERVICES MUST BE OBTAINED FROM THE INDIVIDUAL UTILITIES BEFORE PROCEEDING WITH CONSTRUCTION.

| NO. | ISSUED FOR CONSTRUCTION | 18/05/24 | ES |
|-----|-------------------------|----------|----|
| NO. | REVISIONS               | YYMM/DD  | BY |
|     |                         |          |    |
|     |                         |          |    |
|     |                         |          |    |
|     |                         |          |    |



|             |       |                           |                    |
|-------------|-------|---------------------------|--------------------|
| DESIGNED BY | NK    | CHECKED BY                | <i>[Signature]</i> |
| DRAWN BY    | ES    | APPROVED BY               | <i>[Signature]</i> |
| HOR. SCALE  | 1:500 | RELEASED FOR CONSTRUCTION | <i>[Signature]</i> |
| VERT. SCALE | N/A   | DATE                      | <u>May 24/18</u>   |
| DATE        |       |                           |                    |

PROFESSIONAL'S SEAL

BRAUM  
Member  
24453

CONSULTANT DRAWING NO.  
60561478-01-C-2017\_Lining-ROX.mxd

**THE CITY OF WINNIPEG WATER AND WASTE DEPARTMENT**

**2017 SEWER RENEWALS BY CIPP LINING CONTRACT 4**  
S-MA60019813  
RUTGERS BAY (E LEG)  
MH AT RUTGERS BAY (S LEG) (NPL) TO MH AT RUTGERS BAY (N LEG)

|                     |       |    |    |
|---------------------|-------|----|----|
| SHEET               | 42    | OF | 59 |
| CITY DRAWING NUMBER | 11789 |    |    |
| REV                 | 0     |    |    |