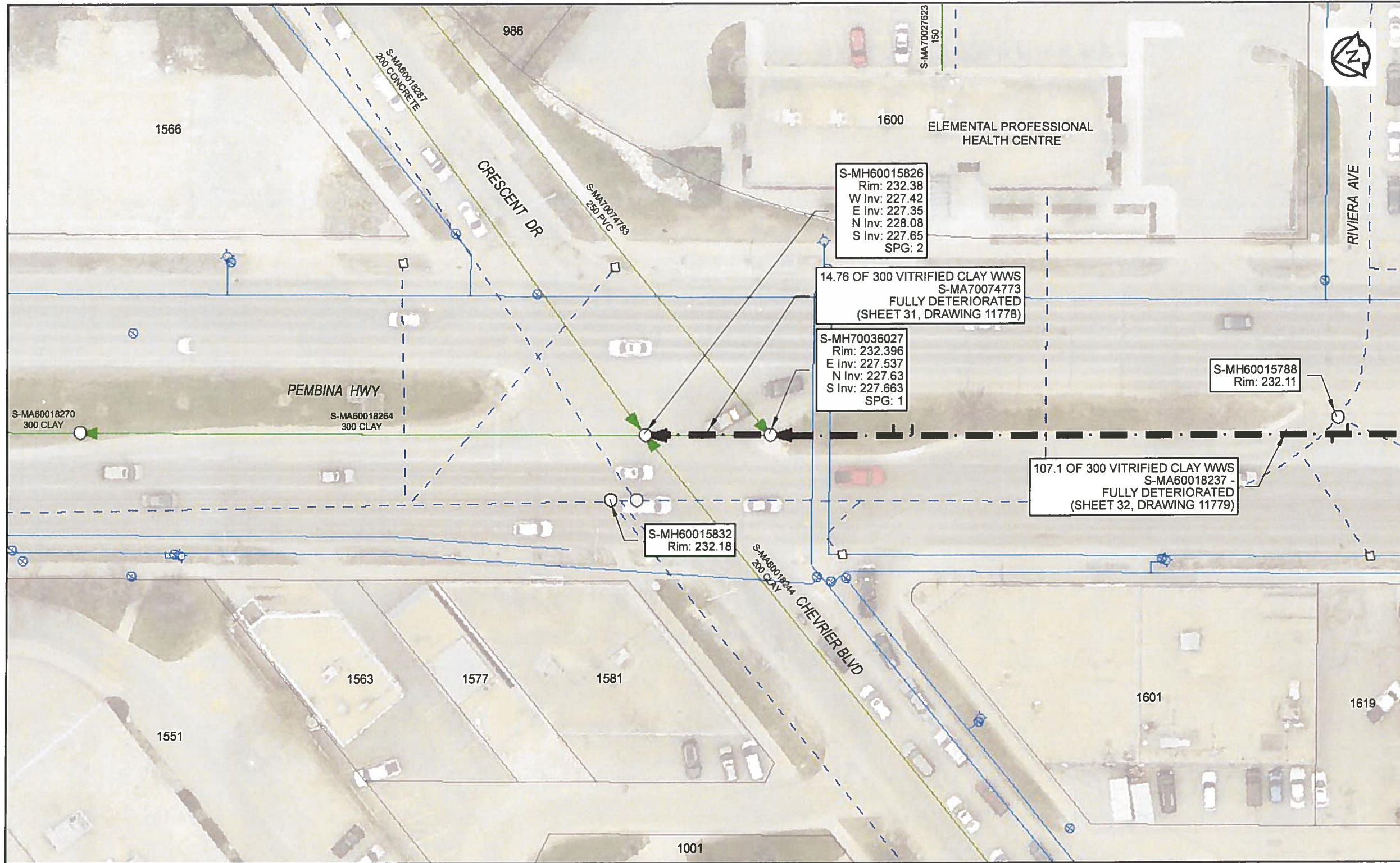


B SIZE 11" X 17" (279mm x 432mm)



**Sewer Junction Information**  
(From Video Inspection)  
Reference MH Distance Size Clock

**Traffic Controls**  
Regional Street Lane Closure Required: Yes  
Impacted Regional Street: Pembina HWY

**General Requirements:**  
Maintain EB-NB and NB-WB left hand turn movements at Chevrier Blvd. Maintain all NB and SB lanes on Pembina HWY during AM and PM weekday peak periods. Maintain minimum one lane of traffic in each direction on regional streets at all times.

**WARNING**  
IF POWER EQUIPMENT OR EXPLOSIVES ARE TO BE USED FOR EXCAVATION ON THIS PROJECT, THE CONTRACTOR MUST:  
1) NOTIFY THE GAS COMPANY OF THE PROPOSED LOCATION OF EXCAVATION.  
2) TAKE PRECAUTION TO AVOID DAMAGE TO GAS COMPANY INSTALLATIONS  
SEE PROVINCIAL REGULATION 140/92 FOR DETAILS

**APEGM**  
Certificate of Authorization  
AECOM Canada Ltd.  
No. 4671 Date: *May 24/18*

**METRIC**  
WHOLE NUMBERS INDICATE MILLIMETRES  
DECIMALIZED NUMBERS INDICATE METRES  
0 2.5 5 10 15 20  
Meters

**RECORD DRAWING**  
BID OPPORTUNITY NO. 224-2018

AECOM REVIEW DRFT CHK

FILE NAME: 2017 Lining.mxd SAVED BY: ES

**LOCATION APPROVED UNDERGROUND STRUCTURES**

SUPR. U/G STRUCTURES	DATE COMMITTEE

**NOTE:**  
LOCATION OF UNDERGROUND STRUCTURES AS SHOWN ARE BASED ON THE BEST INFORMATION AVAILABLE. BUT NO GUARANTEE IS GIVEN THAT ALL EXISTING UTILITIES ARE SHOWN OR THAT THE GIVEN LOCATIONS ARE EXACT. CONFIRMATION OF EXISTENCE AND EXACT LOCATION OF ALL SERVICES MUST BE OBTAINED FROM THE INDIVIDUAL UTILITIES BEFORE PROCEEDING WITH CONSTRUCTION.

NO.	REVISIONS	YYMM/DD	BY
0	ISSUED FOR CONSTRUCTION	18/05/24	ES

**AECOM**

DESIGNED BY	NK	CHECKED BY	<i>[Signature]</i>
DRAWN BY	ES	APPROVED BY	<i>[Signature]</i>
HOR. SCALE	1: 0	RELEASED FOR CONSTRUCTION	<i>[Signature]</i>
VERT. SCALE	N/A	DATE	<i>May 24/18</i>

PROFESSIONAL'S SEAL

CONSULTANT DRAWING NO.  
60581478-01-C-2017 Lining-R0X.mxd

**THE CITY OF WINNIPEG**  
WATER AND WASTE DEPARTMENT

2017 SEWER RENEWALS  
BY CIPP LINING  
CONTRACT 4  
S-MA70074773  
CHEVRIER BLVD  
MH AT CHEVRIER BV (SPL) TO MH AT CHEVRIER BV

SHEET	31	OF	59
CITY DRAWING NUMBER	11778		
REV	0		