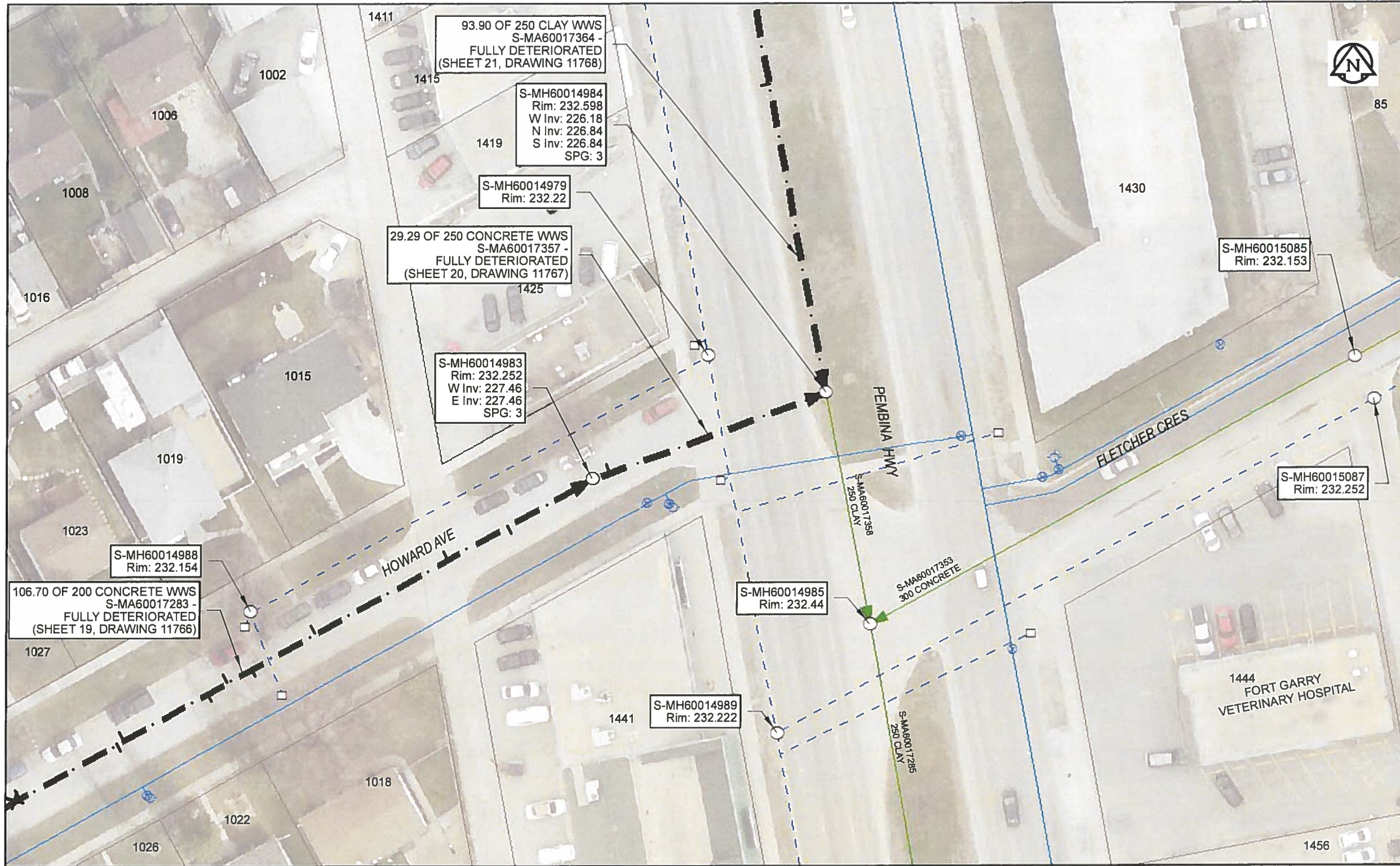


B SIZE 11" X 17" (279mm x 432mm)



**Sewer Junction Information**

(From Video Inspection)

Reference MH	Distance	Size	Clock
S-MH60014983	002.1	100	10

**Traffic Controls**

Regional Street Lane Closure Required: Yes  
Impacted Regional Street: Pembina HWY

**General Requirements:**

Maintain all NB and SB lanes on Pembina HWY during AM and PM weekday peak periods. Maintain minimum one lane of traffic in each direction on regional street at all times.

**WARNING**

IF POWER EQUIPMENT OR EXPLOSIVES ARE TO BE USED FOR EXCAVATION ON THIS PROJECT, THE CONTRACTOR MUST:  
1) NOTIFY THE GAS COMPANY OF THE PROPOSED LOCATION OF EXCAVATION.  
2) TAKE PRECAUTION TO AVOID DAMAGE TO GAS COMPANY INSTALLATIONS.  
SEE PROVINCIAL REGULATION 140/92 FOR DETAILS.



Certificate of Authorization

AECOM Canada Ltd.

No. 4671 Date: *May 24/18*

**METRIC**

WHOLE NUMBERS INDICATE MILLIMETRES  
DECIMALIZED NUMBERS INDICATE METRES

0 2.5 5 10 15 20

Meters

**RECORD DRAWING**

BID OPPORTUNITY NO. 224-2018

AECOM REVIEW DRFT CHK FILE NAME: 2017\_Lining.mxd SAVED BY: ES

**LOCATION APPROVED UNDERGROUND STRUCTURES**

SUPR. U/G STRUCTURES COMMITTEE	DATE

**NOTE:**  
LOCATION OF UNDERGROUND STRUCTURES AS SHOWN ARE BASED ON THE BEST INFORMATION AVAILABLE. BUT NO GUARANTEE IS GIVEN THAT ALL EXISTING UTILITIES ARE SHOWN OR THAT THE GIVEN LOCATIONS ARE EXACT. CONFIRMATION OF EXISTENCE AND EXACT LOCATION OF ALL SERVICES MUST BE OBTAINED FROM THE INDIVIDUAL UTILITIES BEFORE PROCEEDING WITH CONSTRUCTION.

NO.	ISSUED FOR CONSTRUCTION	18/05/24	ES
NO.	REVISIONS	YY/MM/DD	BY



DESIGNED BY	NK	CHECKED BY	<i>David</i>
DRAWN BY	ES	APPROVED BY	<i>[Signature]</i>
HOR. SCALE	1: 500	RELEASED FOR CONSTRUCTION	<i>[Signature]</i>
VERT. SCALE	N/A	DATE	<i>May 29/19</i>

PROFESSIONAL'S SEAL

CONSULTANT DRAWING NO. 60561478-01-C-2017 Lining-ROX.mxd

**THE CITY OF WINNIPEG WATER AND WASTE DEPARTMENT**

2017 SEWER RENEWALS BY CIPP LINING CONTRACT 4 S-MA60017357 HOWARD AVE 1ST MH W OF PEMBINA HWY TO MH AT PEMBINA HWY

SHEET 20 OF 59  
CITY DRAWING NUMBER 11767 REV 0