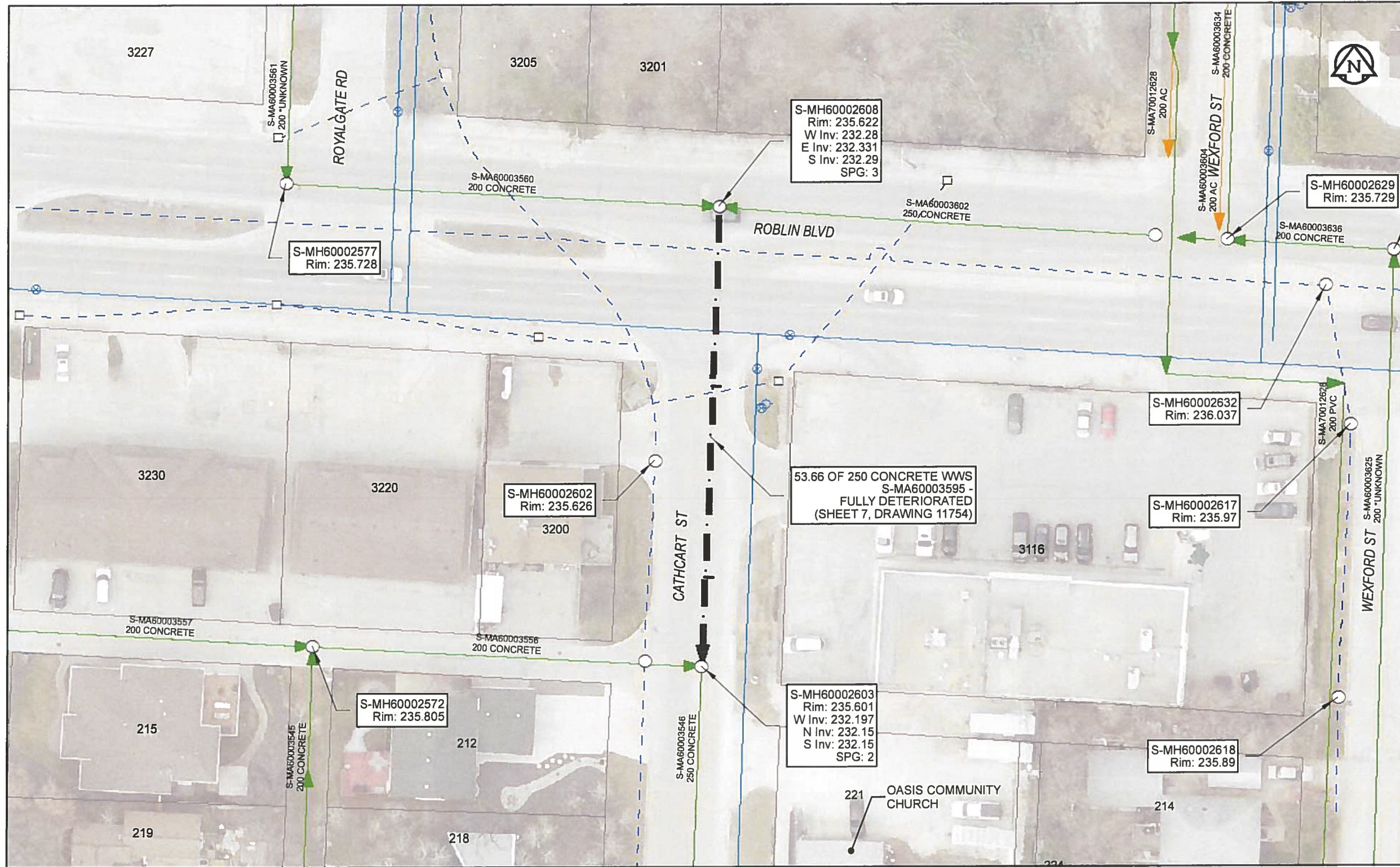


B SIZE 11" X 17" (279mm x 432mm)



Sewer Junction Information

(From Video Inspection)

Reference MH	Distance	Size	Clock
S-MH60002608	021.1	150	10
-	043.5	150	10

Traffic Controls

Regional Street Lane Closure Required: Yes
Impacted Regional Street: Roblin Blvd

General Requirements:

Maintain minimum one lane of traffic in each direction on regional street at all times. Maintain access to local businesses, church and residents.

WARNING

IF POWER EQUIPMENT OR EXPLOSIVES ARE TO BE USED FOR EXCAVATION ON THIS PROJECT, THE CONTRACTOR MUST:
1) NOTIFY THE GAS COMPANY OF THE PROPOSED LOCATION OF EXCAVATION
2) TAKE PRECAUTION TO AVOID DAMAGE TO GAS COMPANY INSTALLATIONS
SEE PROVINCIAL REGULATION 140/92 FOR DETAILS



Certificate of Authorization

AECOM Canada Ltd.

No. 4671 Date: May 24/18

METRIC

WHOLE NUMBERS INDICATE MILLIMETRES
DECIMALIZED NUMBERS INDICATE METRES

0 2.5 5 10 15 20

Meters

RECORD DRAWING

BID OPPORTUNITY NO. 224-2018

AECOM REVIEW DRFT CHK

FILE NAME: 2017 Lining.mxd SAVED BY: ES

LOCATION APPROVED
UNDERGROUND STRUCTURES

SUPR. U/G STRUCTURES COMMITTEE DATE

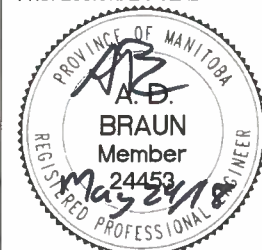
NOTE:
LOCATION OF UNDERGROUND STRUCTURES AS SHOWN ARE BASED ON THE BEST INFORMATION AVAILABLE. BUT NO GUARANTEE IS GIVEN THAT ALL EXISTING UTILITIES ARE SHOWN OR THAT THE GIVEN LOCATIONS ARE EXACT. CONFIRMATION OF EXISTENCE AND EXACT LOCATION OF ALL SERVICES MUST BE OBTAINED FROM THE INDIVIDUAL UTILITIES BEFORE PROCEEDING WITH CONSTRUCTION.

NO.	ISSUED FOR CONSTRUCTION	18/05/24	ES
NO.	REVISIONS	YY/MM/DD	BY
0	ISSUED FOR CONSTRUCTION	18/05/24	ES



DESIGNED BY	NK	CHECKED BY	<i>Alrid</i>
DRAWN BY	ES	APPROVED BY	<i>[Signature]</i>
HOR. SCALE	1:500	RELEASED FOR CONSTRUCTION	<i>[Signature]</i>
VERT. SCALE	N/A	DATE	<u>MMY 24/18</u>

PROFESSIONAL'S SEAL



CONSULTANT DRAWING NO.

60561478-01-C-2017 Lining-R0X.mxd



THE CITY OF WINNIPEG
WATER AND WASTE DEPARTMENT

2017 SEWER RENEWALS
BY CIPP LINING
CONTRACT 4
S-MA60003595
CATHCART ST

MH AT ROBLIN BLVD TO 1ST MH S OF ROBLIN BLVD

SHEET 7 OF 59

CITY DRAWING NUMBER

11754 REV 0