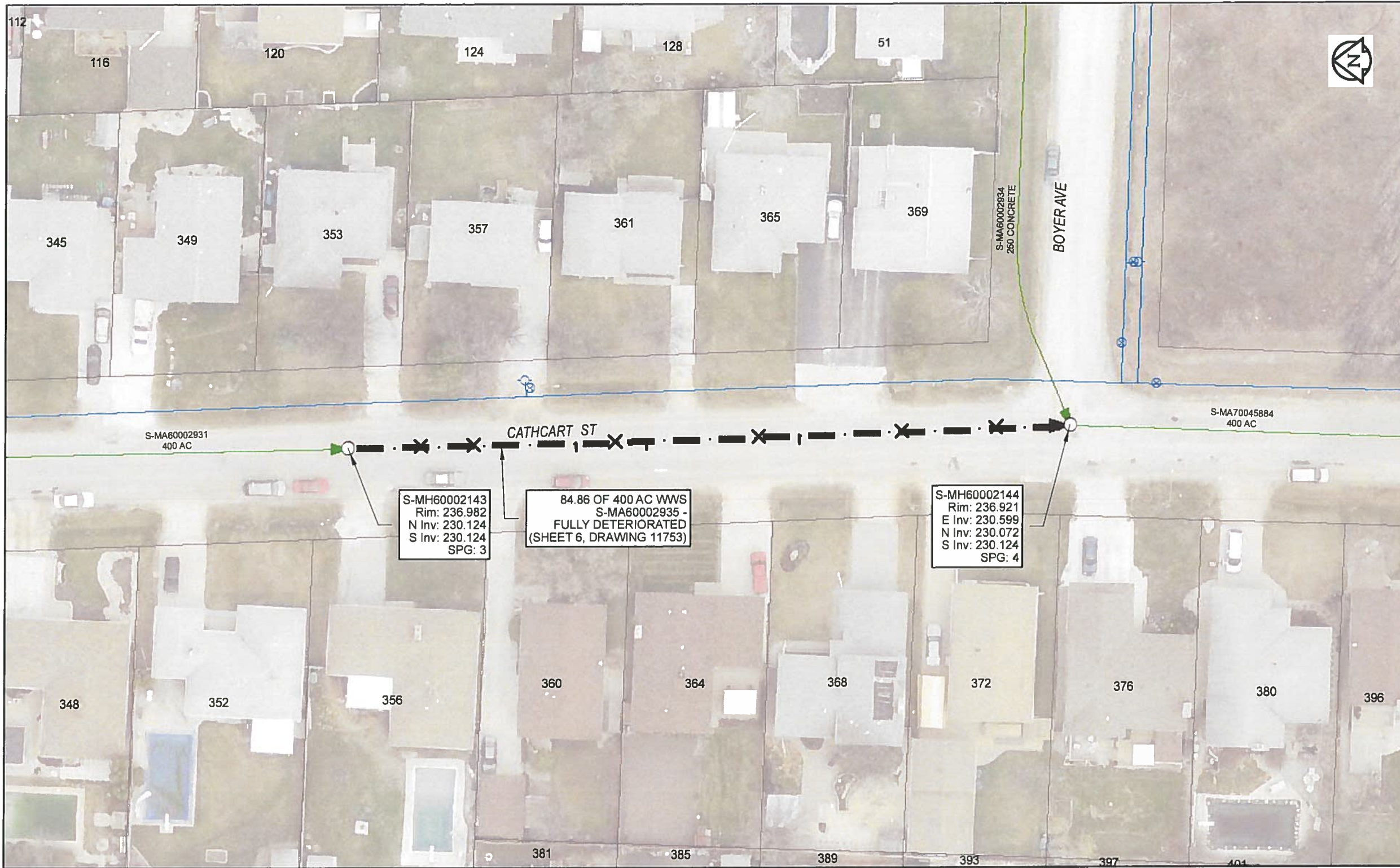


B SIZE 11" X 17" (279mm x 432mm)



Sewer Junction Information
(From Video Inspection)

Reference MH	Distance	Size	Clock
S-MH60002143	008.5	150	12
-	014.7	150	12
-	026.6	150	01
-	031.2	150	12
-	034.8	150	01
-	047.9	150	12
-	052.6	150	01
-	064.6	150	12
-	075.5	150	12

Traffic Controls

Regional Street Lane Closure Required: No
Impacted Regional Street: N/A

General Requirements:

Residential Street Restrictions

WARNING

IF POWER EQUIPMENT OR EXPLOSIVES ARE TO BE USED FOR EXCAVATION ON THIS PROJECT, THE CONTRACTOR MUST:
1) NOTIFY THE GAS COMPANY OF THE PROPOSED LOCATION OF EXCAVATION
2) TAKE PRECAUTION TO AVOID DAMAGE TO GAS COMPANY INSTALLATIONS
SEE PROVINCIAL REGULATION 140/92 FOR DETAILS



Certificate of Authorization

AECOM Canada Ltd.

No. 4671 Date: May 24/18

METRIC

WHOLE NUMBERS INDICATE MILLIMETRES
DECIMALIZED NUMBERS INDICATE METRES

0 2.5 5 10 15 20

Meters

RECORD DRAWING

BID OPPORTUNITY NO. 224-2018

AECOM REVIEW DRAFT CHK

FILE NAME: 2017 Lining.mxd SAVED BY: ES

LOCATION APPROVED
UNDERGROUND STRUCTURES

SUPR. U/G STRUCTURES COMMITTEE	DATE

NOTE:
LOCATION OF UNDERGROUND STRUCTURES AS SHOWN ARE BASED ON THE BEST INFORMATION AVAILABLE. BUT NO GUARANTEE IS GIVEN THAT ALL EXISTING UTILITIES ARE SHOWN OR THAT THE GIVEN LOCATIONS ARE EXACT. CONFIRMATION OF EXISTENCE AND EXACT LOCATION OF ALL SERVICES MUST BE OBTAINED FROM THE INDIVIDUAL UTILITIES BEFORE PROCEEDING WITH CONSTRUCTION.

NO.	ISSUED FOR CONSTRUCTION	18/05/24	ES
NO.	REVISIONS	YYMM/DD	BY

AECOM

DESIGNED BY	NK	CHECKED BY	<i>Chide</i>
DRAWN BY	ES	APPROVED BY	<i>[Signature]</i>
HOR. SCALE	1:500	RELEASED FOR CONSTRUCTION	<i>[Signature]</i>
VERT. SCALE	N/A	DATE	<u>May 24/18</u>
DATE			

PROFESSIONAL'S SEAL

CONSULTANT DRAWING NO.
60561478-01-C-2017 Lining-R0X.mxd

THE CITY OF WINNIPEG
WATER AND WASTE DEPARTMENT

2017 SEWER RENEWALS
BY CIPP LINING
CONTRACT 4
S-MA60002935
CATHCART ST
2ND MH S OF PARKIN AVE TO MH AT BOYER AVE

SHEET 6 OF 59

CITY DRAWING NUMBER

REV

11753 0