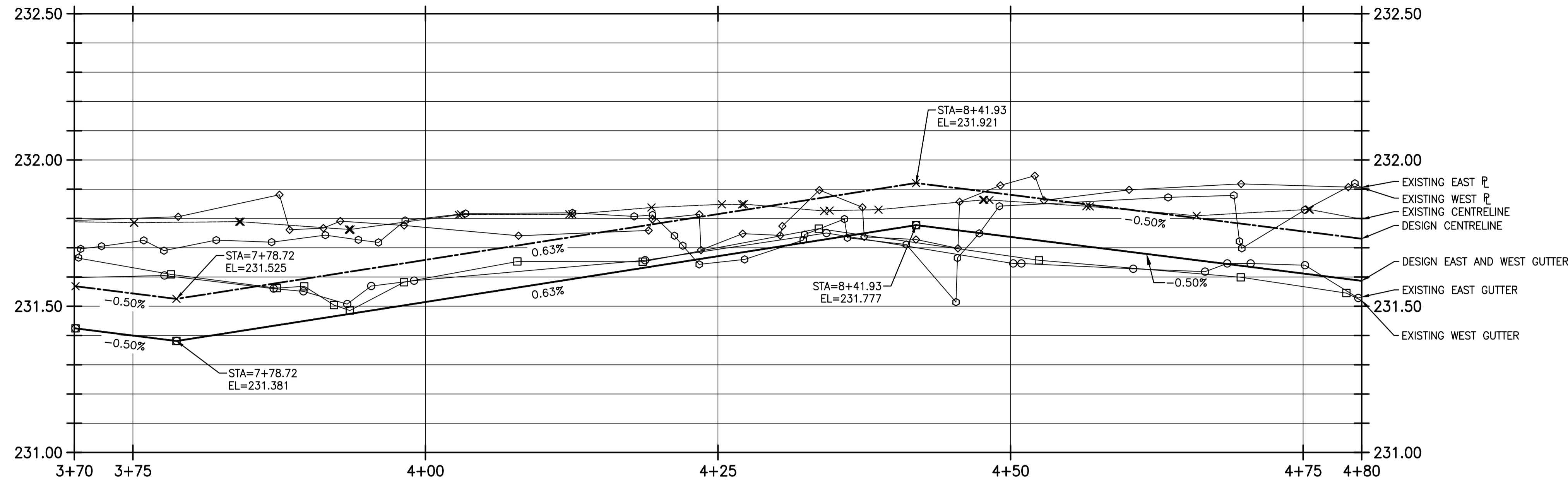
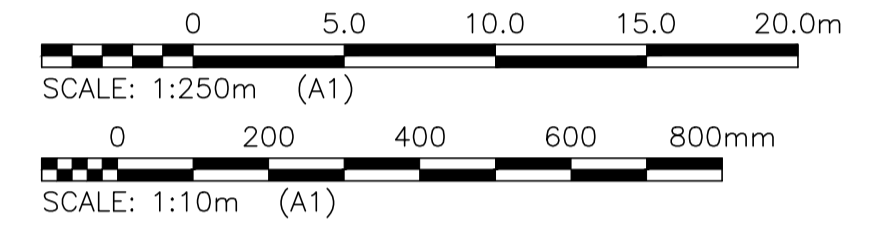
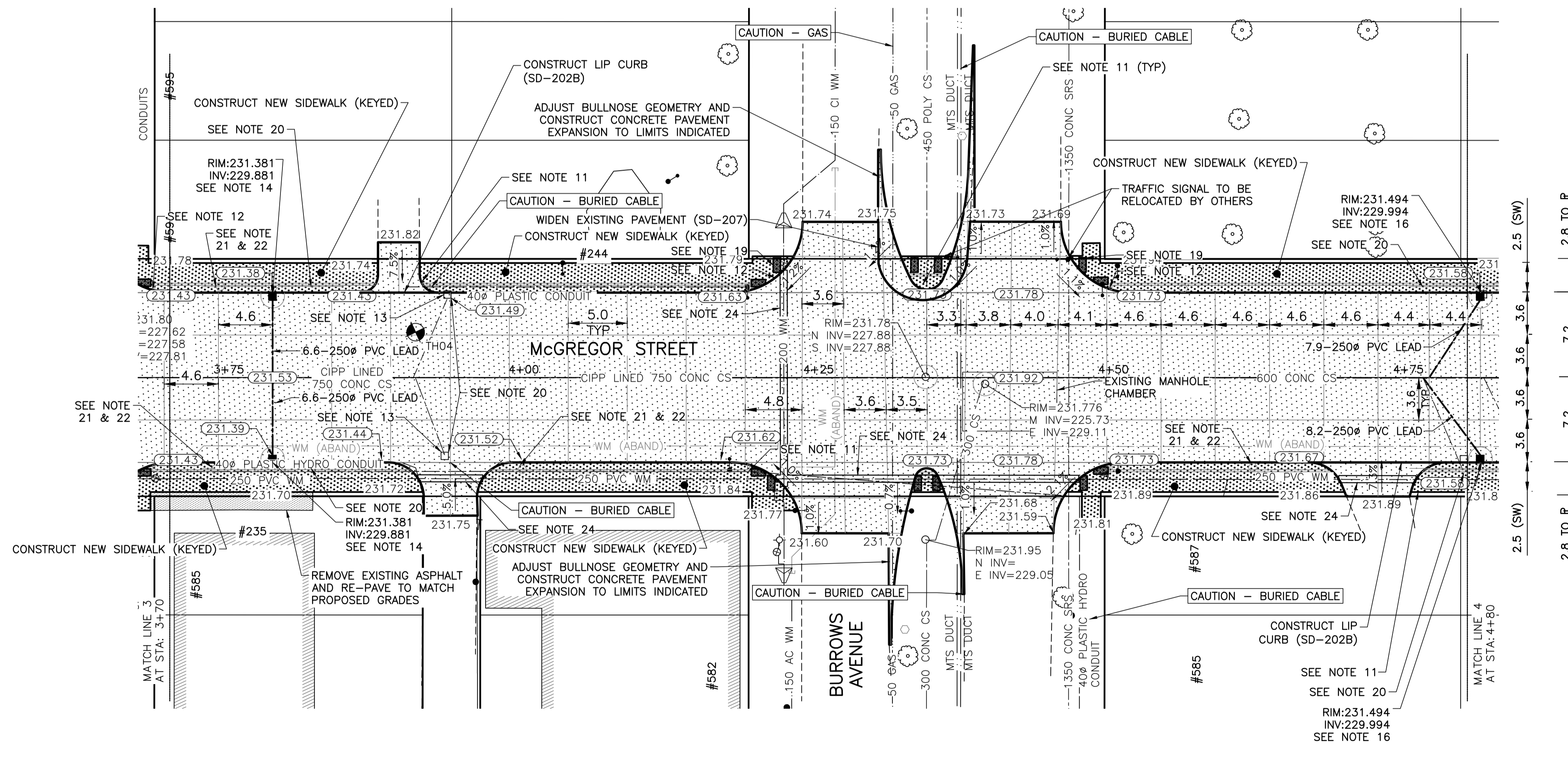
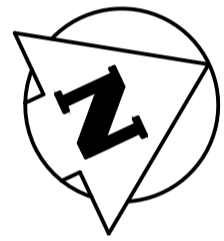


NOTES:

- 1. STATION IN CENTRE OF MCGREGOR RIGHT-OF-WAY UNLESS OTHERWISE NOTED.
2. BASELINE IS CENTRELINE OF MCGREGOR RIGHT-OF-WAY.
3. NORTH PROPERTY LINE OF SELKIRK AVENUE IS STA 1+00.0
4. ALL MEASUREMENTS TO BACK OF CURB.
5. ALL EXISTING TREES TO BE PROTECTED AND MAINTAINED THROUGHOUT CONSTRUCTION UNLESS NOTED OTHERWISE.
6. ALL BUS STOPS WITHIN LIMITS OF CONSTRUCTION TO BE TEMPORARILY RELOCATED BY OTHERS DURING WORKS.
7. HAND OR SOFT DIG METHODS REQUIRED OVER GAS UTILITIES AT INTERVALS DETERMINED BY THE ENGINEER TO DETERMINE DEPTH OF COVER.
8. NO WORKS, INCLUDING CONCRETE CUTTING OR BREAKING, TO BE UNDERTAKEN NEAR GAS LINES UNTIL DEPTH OF COVER IS DETERMINED AND A MANITOBA HYDRO SAFETY WATCH REPRESENTATIVE IS ON SITE.
9. ANY GAS MAINS OR SERVICES EXPOSED IN THE EXCAVATION AREA TO BE ROCK WRAPPED IN ACCORDANCE WITH MANITOBA HYDRO STANDARDS PRIOR TO WORK PROCEEDING ON SITE.
10. NO VIBRATORY COMPACTION PERMITTED WITHIN 1M OF GAS MAINS.
11. INSTALL MODIFIED BARRIER CURB AT ALL INTERSECTION RADII, ALLEY RADII, AND BULLNOSES.
12. CONSTRUCT NEW MONOLITHIC CURB RAMP (10mm HEIGHT INTEGRAL)
13. REMOVE EXISTING CATCHBASIN AND ABANDON LEAD.
14. INSTALL NEW CATCHBASIN (SD-024), COMPLETE WITH 250# LEAD @ 2% MINIMUM GRADE.
15. INSTALL NEW CATCHBASIN (SD-025), COMPLETE WITH 250# LEAD @ 2% MINIMUM GRADE.
16. REMOVE AND REPLACE EXISTING CATCHBASIN (SD-024), COMPLETE WITH 250# LEAD @ 2% MINIMUM GRADE.
17. TRANSVERSE JOINTS SPACED AT 5.0 INTERVALS UNLESS OTHERWISE NOTED.
18. ADJUST ALL WATER VALVES, MANHOLES AND CATCH BASINS TO GRADE.
19. INSTALL DETECTABLE WARNING SURFACE TILE (SD-229AB) IN ALL CORNERS OF STREET INTERSECTIONS.
20. INSTALL 6.0-150# SUBDRAIN (SD-245) BOTH SIDES OF ALL PROPOSED CATCHBASINS.
21. REMOVE EXISTING SIGN
22. INSTALL MOUNTING SLEEVE AT LOCATIONS INDICATED
23. APPROACH GRADES SHOWN REPRESENT AVERAGE SLOPES. CROSSFALL ACROSS SIDEWALK TRAVEL PATH TO BE 4% OR LESS.
24. INSULATE ALL WATERMAINS AND SERVICES UNDER NEW PAVEMENT IN ACCORDANCE WITH SD-018.



MCGREGOR STREET - PROFILE

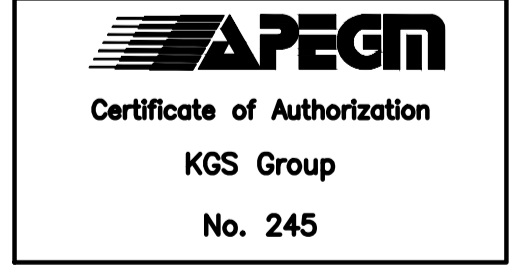


LOCATIONS OF UNDERGROUND STRUCTURES AS SHOWN ARE BASED ON THE BEST INFORMATION AVAILABLE. BUT NO GUARANTEE IS GIVEN THAT ALL EXISTING UTILITIES ARE SHOWN OR THAT THE GIVEN LOCATIONS ARE EXACT. CONFIRMATION OF THE EXISTENCE AND EXACT LOCATION OF ALL SERVICES MUST BE OBTAINED FROM INDIVIDUAL UTILITIES BEFORE PROCEEDING WITH CONSTRUCTION.

PROPERTY LIMITS DELINEATION
DELINEATION OF PROPERTY LIMITS AS SHOWN ON THIS DWG DOES NOT REPRESENT A "LEGAL SURVEY". KGS GROUP MAKES NO REPRESENTATION OR WARRANTY AS TO THE ACCURACY OF PROPERTY LIMITS DELINEATED ON THIS DWG, NOR ON THE DIMENSIONAL ACCURACY OF DWG FEATURES RELATIVE TO THOSE PROPERTY LIMITS.

WARNING
NOTIFY THE GAS COMPANY OF THE PROPOSED LOCATION OF EXCAVATION. TAKE PRECAUTION TO AVOID DAMAGE TO GAS COMPANY INSTALLATIONS. SEE PROVINCIAL REGULATION 210/72 FOR DETAILS.

METRIC
WHOLE NUMBERS INDICATE MILLIMETRES
DECIMALIZED NUMBERS INDICATE METRES



\\K-FILE-A\PROJECTS\2017\17-0107-022\DWG\MUN\17-02078-608-CALL.DWG PLOT 1:1 (A-1)

Legend table with columns for EXISTING and PROPOSED items, including symbols for sewer, gas, hydro, watermain, and various street features.

LOCATION APPROVED UNDERGROUND STRUCTURES table with columns for B.I.M., ELEV., and COORDINATE SYSTEM.

Design and revision table with columns for NO., REVISIONS, DATE, and BY.

Project information block including THE CITY OF WINNIPEG PUBLIC WORKS DEPARTMENT, PROJECT TITLE 2018 REGIONAL STREET PACKAGE, SHEET 5 OF 13, and PLAN AND PROFILE 03+70.00 TO 04+80.00.