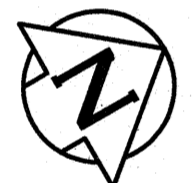


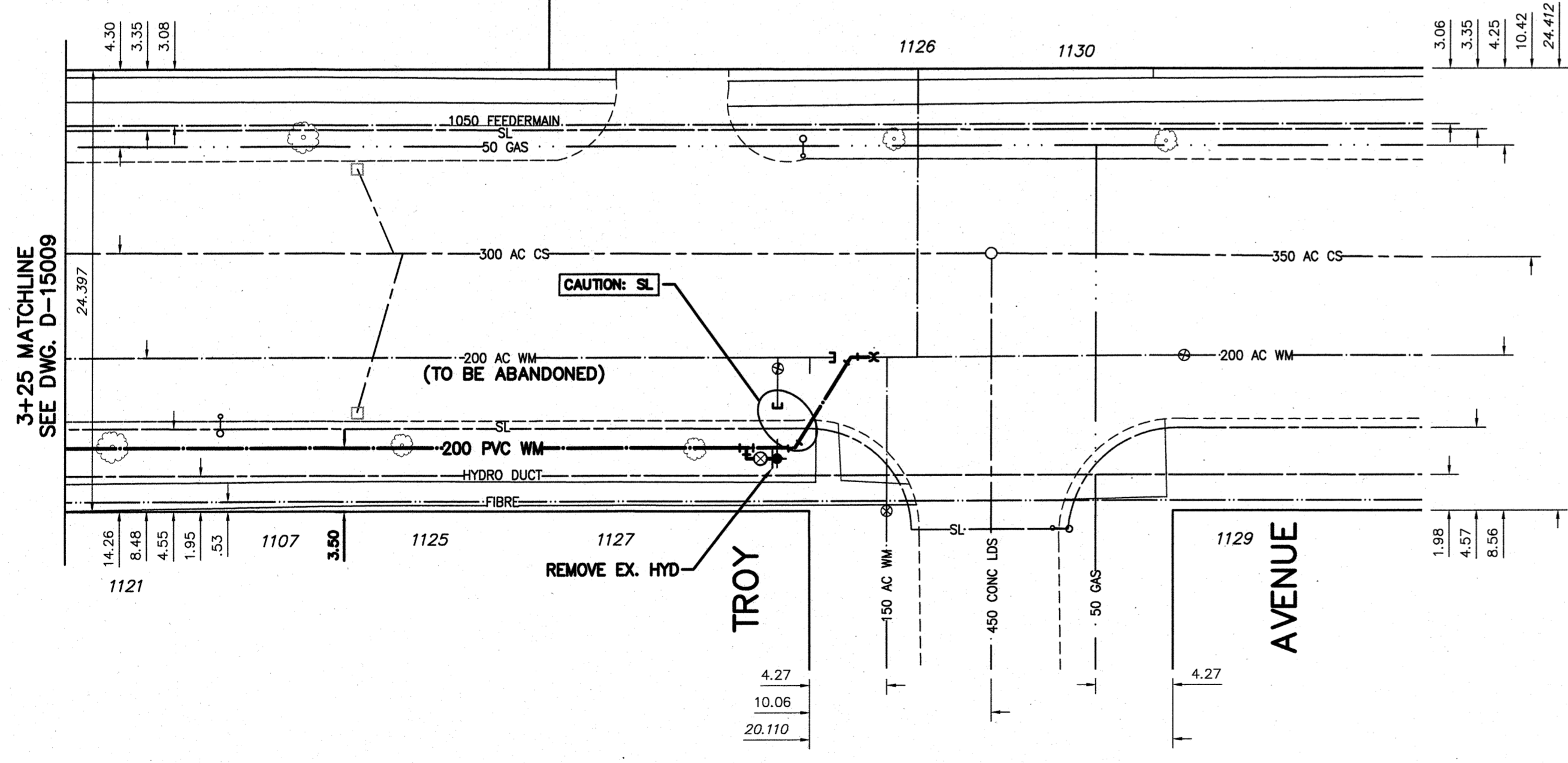
NOTE: CHAINAGES SHOWN ARE ALONG ϕ OF FIFE STREET



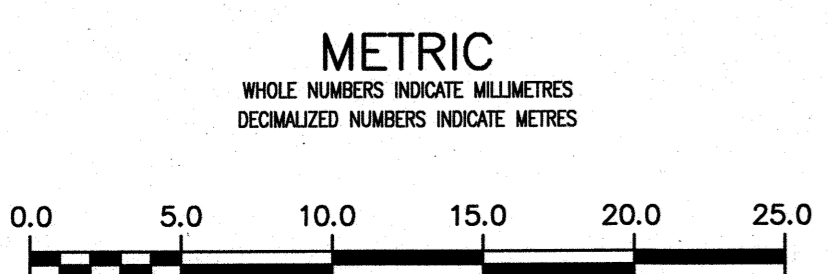
FIFE STREET

WATER SERVICE TABLE

ADDRESS	PIPE SIZE & MATERIAL (STREET)	PIPE SIZE & MATERIAL (PROP.)	SHORT & LONG MEASUREMENT	CORP. LOCATION	REMARKS
1130 FIFE ST	38 COPPER	38 COPPER	12.5 NSBL	OPP SC	OUTSIDE LIMITS
1131 FIFE ST	20 COPPER	20 COPPER	4.27 EWBL	0.81 W SC	OUTSIDE LIMITS
			14.94 EEL FIFE		



NOTE: VALVES TO BE INSTALLED COUNTERCLOCKWISE TO CLOSE

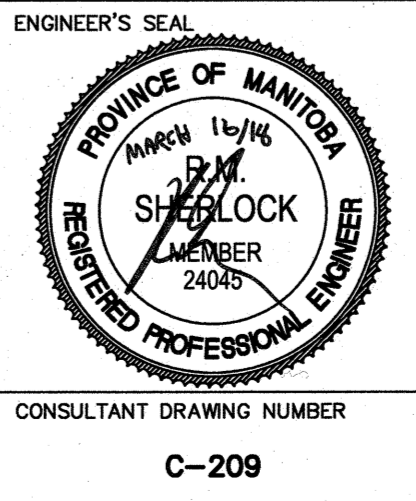


ENGINEERS GEOSCIENTISTS MANITOBA
 Certificate of Authorization
 Stantec Consulting Ltd.
 No. 1301

LOCATION APPROVED UNDERGROUND STRUCTURES		B.M. 28-24	
SUPV. U/G STRUCTURES COMMITTEE	DATE	ELEV. 231.334 m	654535 - Burrows Ave. & Charles St. intersection in median, Tab. in 7.6 m Cons. plus 13.7 m N. of S.L. of Burrows Ave. & 5.2 m E. of W.L. of Charles St.
NOTE:			
LOCATION OF UNDERGROUND STRUCTURES AS SHOWN ARE BASED ON THE BEST INFORMATION AVAILABLE BUT NO GUARANTEE IS GIVEN THAT ALL EXISTING UTILITIES ARE SHOWN OR THAT THE GIVEN LOCATIONS ARE EXACT. CONFIRMATION OF EXISTENCE AND EXACT LOCATION OF ALL SERVICES MUST BE OBTAINED FROM THE INDIVIDUAL UTILITIES BEFORE PROCEEDING WITH CONSTRUCTION.			
NO.	ISSUED FOR TENDER	2018.03.21	RS
	REVISIONS	DATE	BY

Stantec

DESIGNED BY	RS	CHECKED BY	WB
DRAWN BY	SG	APPROVED BY	RS
SCALE:		RELEASED FOR CONSTRUCTION	
HORIZONTAL	1:250		
VERTICAL	1:50		
DATE	2018 02 06	DATE	03/16/18
PLOT DATE:	2018 03 16		



THE CITY OF WINNIPEG
 WATER AND WASTE DEPARTMENT
 ENGINEERING DIVISION

2018 WATERMAIN RENEWALS
 CONTRACT 4
 FIFE STREET
 51.65 NSL MOUNTAIN AVENUE TO TROY AVENUE

SHEET 11 OF 11
 CITY DRAWING NUMBER
 D-15010

CONSULTANT DRAWING NUMBER
 C-209