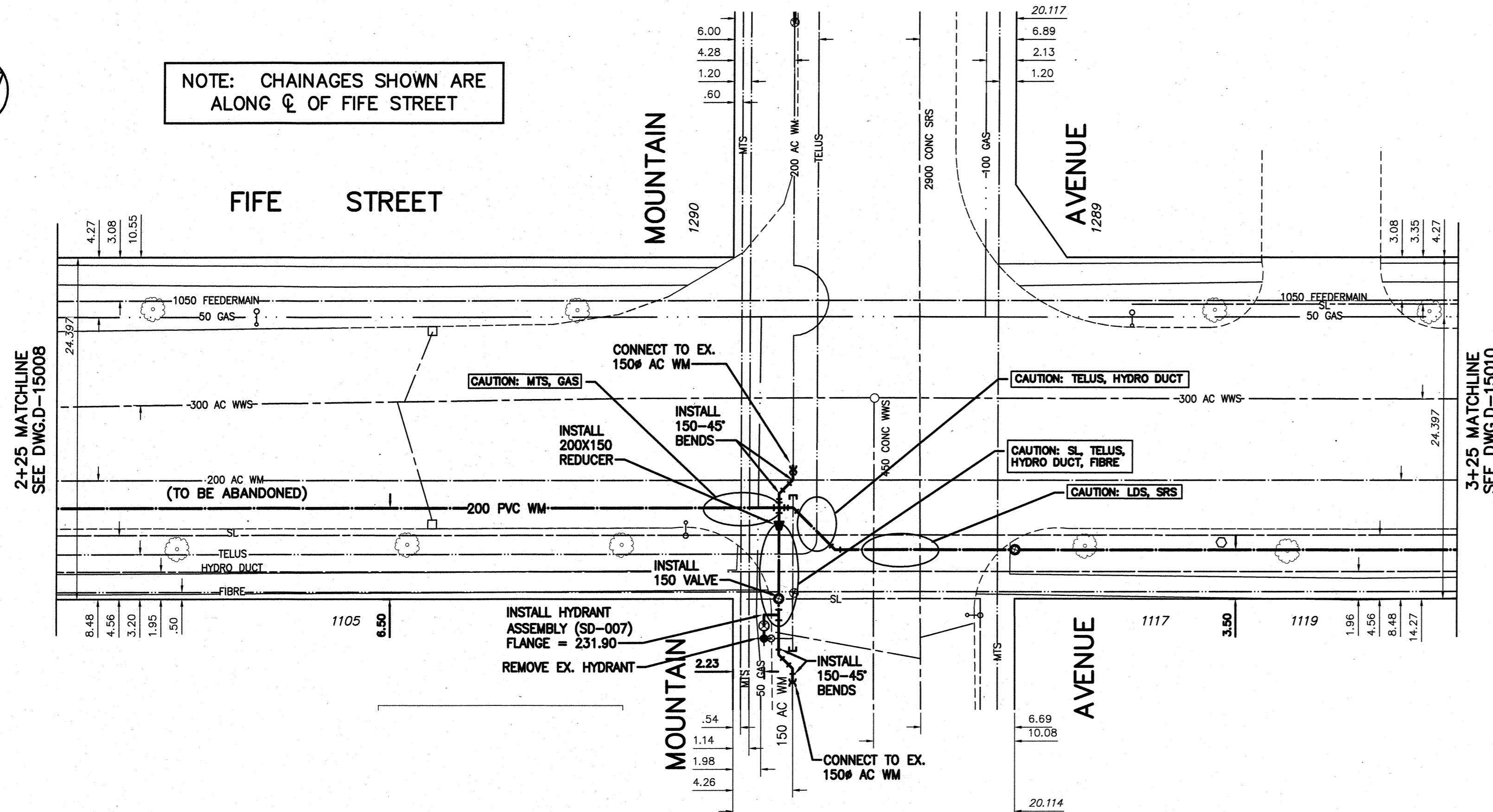


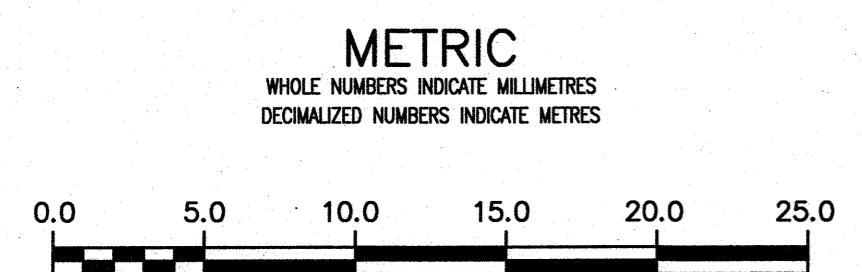
NOTE: CHAINAGES SHOWN ARE ALONG ϕ OF FIFE STREET



WATER SERVICE TABLE

ADDRESS	PIPE SIZE & MATERIAL (STREET)	PIPE SIZE & MATERIAL (PROP.)	SHORT & LONG MEASUREMENT	CORP. LOCATION	REMARKS
1105 FIFE ST	20	20	1.07 WEBL	0.61 W SC	OUTSIDE LIMITS
COMMERCIAL	COPPER	COPPER	29.87 EEL FIFE ST		
1290 MOUNTAIN AV	25	25	6.86 WWBL	3.05 W SC	OUTSIDE LIMITS
COMMERCIAL	COPPER	COPPER	62.03 WWL FIFE		
1289 MOUNTAIN AV	38	38	11.58 WWL OF BUILDING	0.91 E OF S/C	OUTSIDE LIMITS
COMMERCIAL	COPPER	COPPER	38.71 E 1ST HYD W FIFE		
1117 FIFE ST	25	25	8.84 EWBL	OPP SC	OUTSIDE LIMITS
COMMERCIAL	COPPER	COPPER	16.31 EEL FIFE		

NOTE: VALVES TO BE INSTALLED COUNTERCLOCKWISE TO CLOSE



ENGINEERS GEOSCIENTISTS MANITOBA
 Certificate of Authorization
 Stantec Consulting Ltd.
 No. 1301

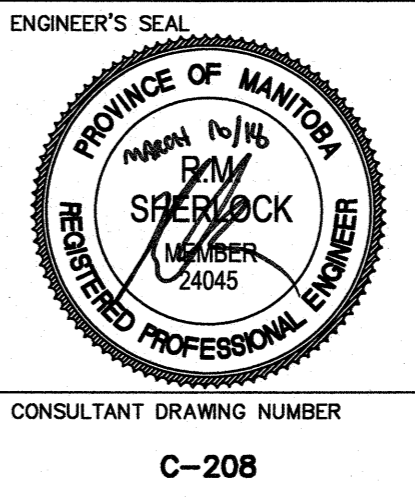
LOCATION APPROVED UNDERGROUND STRUCTURES
 SUPV. U/G STRUCTURES COMMITTEE DATE
 NOTE: LOCATION OF UNDERGROUND STRUCTURES AS SHOWN ARE BASED ON THE BEST INFORMATION AVAILABLE BUT NO GUARANTEE IS GIVEN THAT ALL EXISTING UTILITIES ARE SHOWN OR THAT THE GIVEN LOCATIONS ARE EXACT. CONFIRMATION OF EXISTENCE AND EXACT LOCATION OF ALL SERVICES MUST BE OBTAINED FROM THE INDIVIDUAL UTILITIES BEFORE PROCEEDING WITH CONSTRUCTION.

B.M. 28-24	654535 - Burrows Ave. & Charles St. intersection in median, Tbt. in 7.6 m Conc. pile, 13.7 m N. of S.L. of Burrows Ave. & 5.2 m E. of W.L. of Charles St.		
ELEV. 231.334 m			
01	ISSUED FOR TENDER	2018.03.21	RS
NO.	REVISIONS	DATE	BY

Stantec

DESIGNED BY: RS
 DRAWN BY: SG
 SCALE: HORIZONTAL 1:250, VERTICAL 1:50
 DATE: 2018 02 06
 PLOT DATE: 2018 03 16

CHECKED BY: WB
 APPROVED BY: RS
 RELEASED FOR CONSTRUCTION: 3/16/18
 DATE: 2018 03 16



THE CITY OF WINNIPEG
 WATER AND WASTE DEPARTMENT
 ENGINEERING DIVISION

2018 WATERMAIN RENEWALS
 CONTRACT 4
 FIFE STREET
 125 NSL BOYD AVENUE TO
 51.65 NSL MOUNTAIN AVENUE

CONSULTANT DRAWING NUMBER: C-208

SHEET 10 OF 11
 CITY DRAWING NUMBER: D-15009