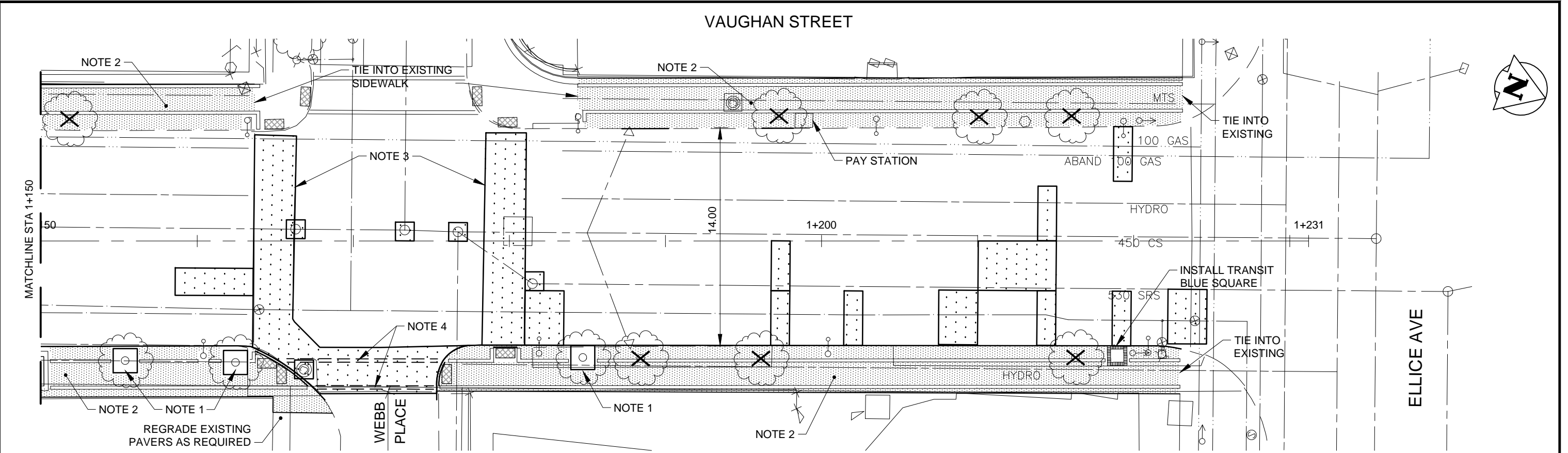
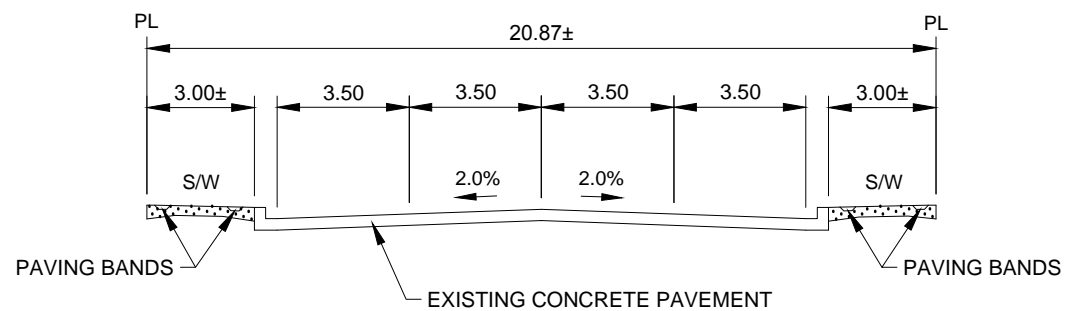


V:\1137\active\113707600\0300\_drawing\0302\_sheet\_files\02\_civil\07600c-104-xxx.dwg  
 2018/05/02 9:11 AM By: Kjartanson, Melanie



NOTES:

1. CONSTRUCT REINFORCED TREE WELL AND INSTALL ADA COMPLIANT CAST IRON GRATE (AS PER DETAIL).
2. RENEW EXISTING CURB (AS INDICATED). REMOVE EXISTING SIDEWALK, AND PAVING STONES. CONSTRUCT CURB AND 100mm SIDEWALK WITH BLOCKOUTS (AS PER DETAIL).
3. REMOVE EXISTING STONE. INSTALL NEW FULL-DEPTH 230 PLAIN DOWELED CONCRETE PAVEMENT REPLACEMENT ACROSS FULL WIDTH OF ROAD BETWEEN BANDS OF PAVERS.
4. CHARCOAL COLOUR PAVER BANDS - DOUBLE RUNNING BOND PATTERN PER TYPICAL PEDESTRIAN CROSSING DETAIL BELOW.



A TYPICAL SECTION  
 N.T.S.

METRIC  
 WHOLE NUMBERS INDICATE MILLIMETRES  
 DECIMALIZED NUMBERS INDICATE METRES

**ENGINEERS  
 GEOSCIENTISTS  
 MANITOBA**  
 Certificate of Authorization  
 Stantec Consulting Ltd.  
 No. 1301

CONCRETE REPAIRS

NEW CONCRETE

SIDEWALK

TREE REMOVAL

**Stantec**  
 500 - 311 Partridge Avenue, Winnipeg MB  
 www.stantec.com

**Winnipeg**

CITY DRAWING NO.:  
 -  
 DATE: 18.03.01  
 DRAWN BY: M.K.

DRAWING NO.:  
 C-105  
 SHT 6 OF 23  
 SCALE:  
 1:250

2018 STREET MAINTENANCE  
 PRESERVATION PROGRAM  
 VAUGHAN STREET  
 STA 1+150 TO STA 1+232