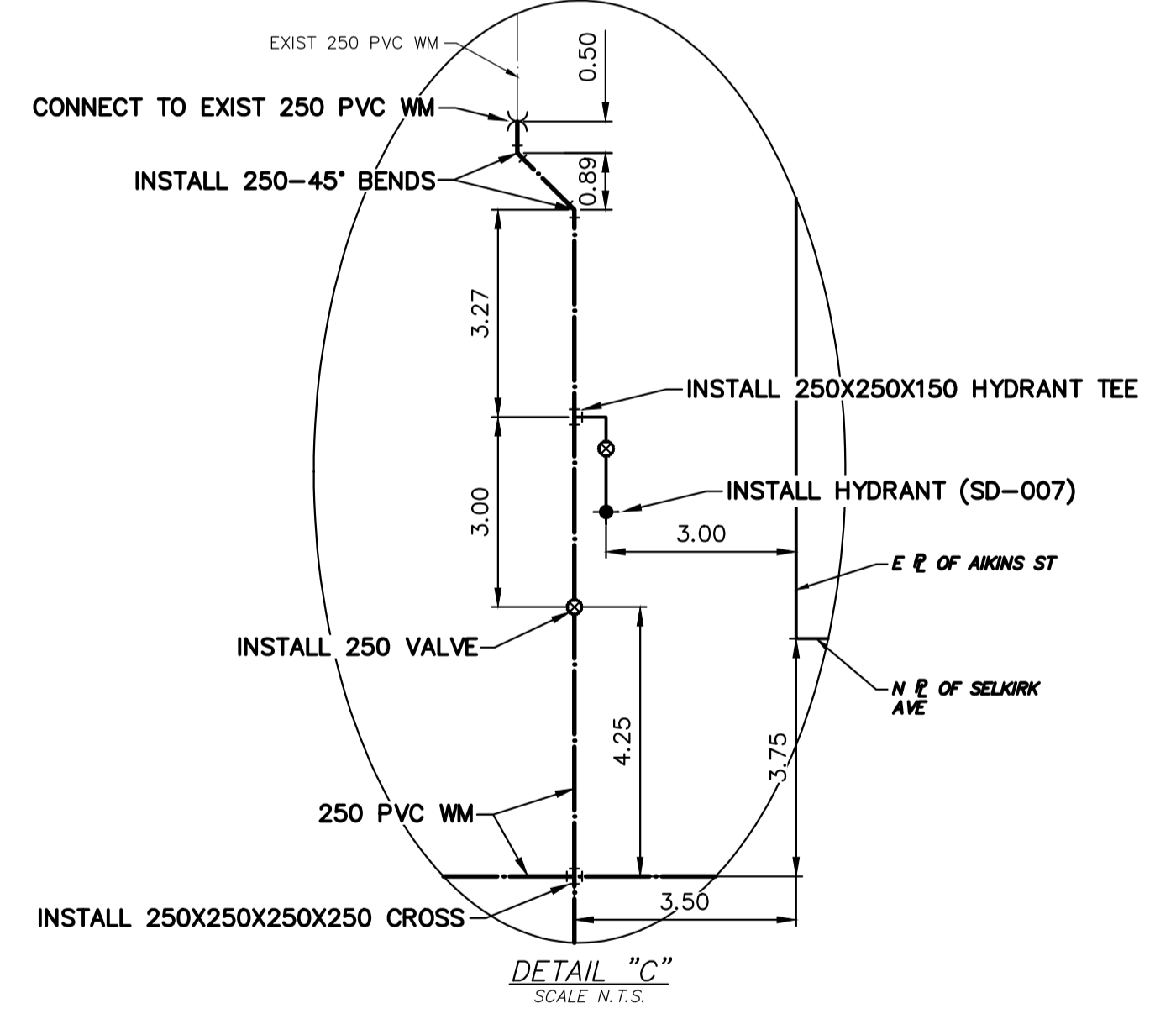
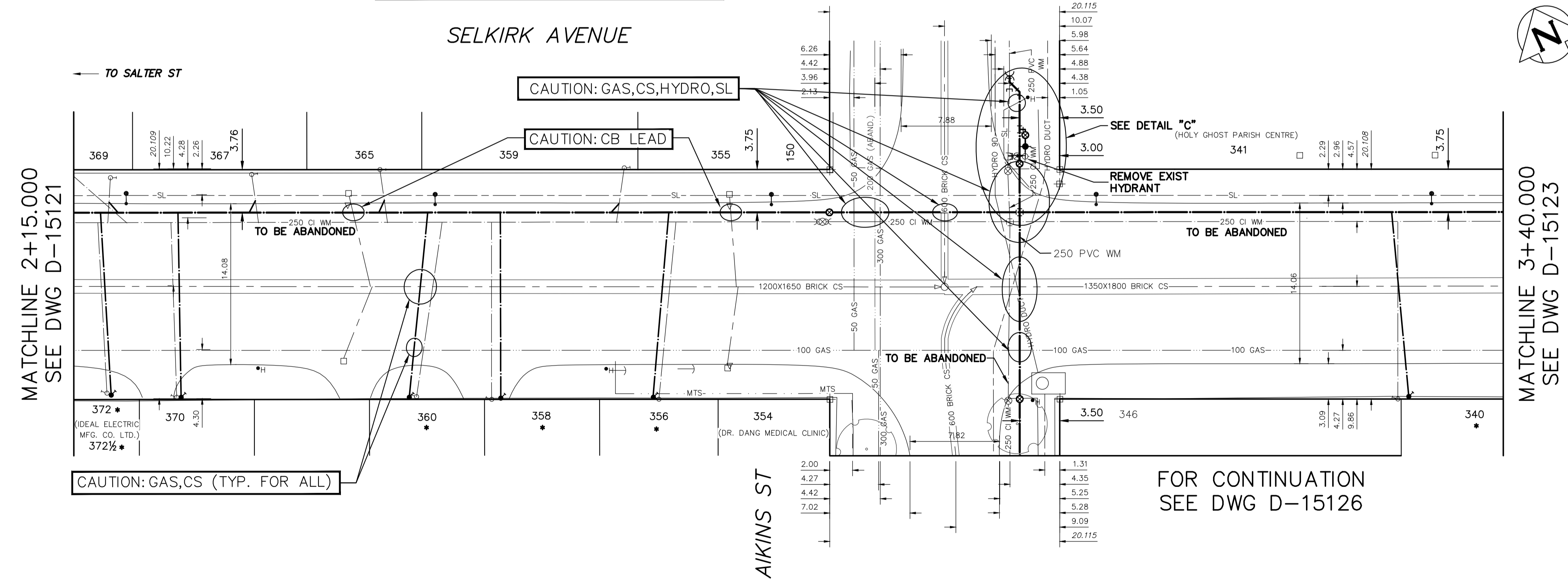


WATER SERVICE INFORMATION					
ADDRESS	SIZE (mm) MATERIAL (STREET)	SIZE (mm) MATERIAL (PROP.)	SHORT & LONG MEASUREMENT	CORP. LOCATION	REMARKS
* 373 SELKIRK AVE	16	20	2.03m EEL HSE	4.3 E OF S/C	RENEW TO R W/20 CU
RESIDENTIAL	LEAD	CU	66.259m WWL AIKINS ST		WYED ON W/371
* 372 SELKIRK AVE	12	12	1.55m WEL BLDG	0.8 W OF S/C	RENEW TO R W/20 CU
COMMERCIAL	LEAD	LEAD	57.051m WWL AIKINS ST		SHARED SERVICE W/372
* 372 SELKIRK AVE	12	12	1.55m WEL BLDG	0.8 W OF S/C	RENEW TO R W/20 CU
COMMERCIAL	LEAD	LEAD	57.051m WWL AIKINS ST		SHARED SERVICE W/372
* 371 SELKIRK AVE	16	20	2.03m EEL HSE	4.3 E OF S/C	RENEW TO R W/20 CU
RESIDENTIAL	LEAD	CU	66.259m WWL AIKINS ST		WYED ON PROP W/373
* 370 SELKIRK AVE	16	12	0.66m WEL HSE	0.5 W OF S/C	RENEW TO R W/20 CU
RESIDENTIAL	LEAD	LEAD	57.100m WWL AIKINS ST		RECONNECT SERVICE
369 SELKIRK AVE	20	20	1.86m WEL HSE	0.2 E OF S/C	RECONNECT SERVICE
RESIDENTIAL	CU	CU	62.898m WWL AIKINS ST		RECONNECT SERVICE
367 SELKIRK AVE	20	20	0.82m EEL HSE	0.5 E OF S/C	RECONNECT SERVICE
RESIDENTIAL	CU	CU	50.536m WWL AIKINS ST		RECONNECT SERVICE
365 SELKIRK AVE	12	12	2.69m WEL HSE	0.6 E OF S/C	RECONNECT SERVICE
RESIDENTIAL	CU	CU	39.320m WWL AIKINS ST		RECONNECT SERVICE
* 360 SELKIRK AVE	12	20	3.79m EWL HSE	2.3 E OF S/C	RENEW TO R W/20 CU
RESIDENTIAL	LEAD	CU	36.125m WWL AIKINS ST		RECONNECT SERVICE
359 SELKIRK AVE	20	20	2.71m EEL HSE	0.6 E OF S/C	RECONNECT SERVICE
RESIDENTIAL	CU	CU	17.961m WWL AIKINS ST		RECONNECT SERVICE
* 358 SELKIRK AVE	12	12	2.81m WEL HSE	1.5 E OF S/C	RENEW TO R W/20 CU
RESIDENTIAL	LEAD	LEAD	29.569m WWL AIKINS ST		RECONNECT SERVICE
* 356 SELKIRK AVE	12	20	14.939m WWL AIKINS ST	1.5 E OF S/C	RENEW TO R W/20 CU
RESIDENTIAL	LEAD	CU	6.87m WEL HSE		OUTSIDE LIMITS
355 SELKIRK AVE	20	20	14.324m WWL AIKINS ST	0.3 E OF S/C	SERVICED OFF AIKINS ST
RESIDENTIAL	CU	CU	7.01m WEL HSE		RECONNECT SERVICE
346 SELKIRK AVE	20	20	7.01m WEL HSE	0.3 E OF S/C	RECONNECT SERVICE
RESIDENTIAL	CU	CU	15.239 WEL BLDG		SERVICED OFF AIKINS
341 SELKIRK AVE	50	50	9.43m WEL BLDG	0.3 E OF S/C	OUTSIDE LIMITS
RESIDENTIAL	CU	CU	15.239 WEL BLDG		RECONNECT SERVICE
* 340 SELKIRK AVE	16	16	0.97m WEL HSE	0.3 E OF S/C	RENEW TO R W/20 CU
RESIDENTIAL	LEAD	LEAD	29.567 WEL AIKINS ST		RECONNECT SERVICE
338 SELKIRK AVE	25	20	1.31m WEL BLDG	1.2 W OF S/C	RECONNECT SERVICE
RESIDENTIAL	CU	CU	41.266m WWL ROBINSON ST		RECONNECT SERVICE
* 334 SELKIRK AVE	12	20	OFF EL HSE	0.3 E OF S/C	RENEW TO R W/20 CU
RESIDENTIAL	LEAD	CU	30.446m WWL ROBINSON ST		RECONNECT SERVICE
333 SELKIRK AVE	50	50	23.68m WEL HSE	0.3 E OF S/C	RECONNECT SERVICE
COMMERCIAL	CU	CU	9.262m WWL ROBINSON ST		RECONNECT SERVICE
330 SELKIRK AVE	20	20	3.72m WEL HSE	0.3 E OF S/C	RECONNECT SERVICE
COMMERCIAL	CU	CU	24.807m WWL ROBINSON ST		RECONNECT SERVICE
* 326 SELKIRK AVE	16/20	12	4.42m WEL HSE	0.3 E OF S/C	RENEW TO R W/20 CU
RESIDENTIAL	LEAD	LEAD	9.262m WWL ROBINSON ST		WYED W/324
* 324 SELKIRK AVE	16	12	0.30m WEL HSE	0.4 W OF S/C	RENEW TO R W/20 CU
RESIDENTIAL	LEAD	LEAD	8.911m WWL ROBINSON ST		WYED W/326
319 SELKIRK AVE	20	25	5.92m WEL BLDG	0.3 E OF S/C	RECONNECT SERVICE
COMMERCIAL	CU	CU	5.080m WEL ROBINSON ST		RECONNECT SERVICE
303 SELKIRK AVE	20	20	3.36m WEL BLDG	0.3 E OF S/C	RECONNECT SERVICE
COMMERCIAL	CU	CU	25.163m WEL ROBINSON ST		RECONNECT SERVICE
300 SELKIRK AVE	-	-	1.37m WEL BLDG	2.1 N OF S/C	RECONNECT SERVICE
COMMERCIAL	-	-	18.042 WEL SELKIRK AVE		RECONNECT SERVICE
300 SELKIRK AVE	-	-	5.99m WEL BLDG	-	RECONNECT SERVICE
COMMERCIAL	-	-	23.755 WEL CHARLES ST		RECONNECT SERVICE
300 SELKIRK AVE	-	-	1.73m WEL BLDG	-	RECONNECT SERVICE
COMMERCIAL	-	-	16.045 WEL CHARLES ST		RECONNECT SERVICE
293 SELKIRK AVE	25	25	5.25m WEL BLDG	0.4 W OF S/C	OUTSIDE LIMITS
COMMERCIAL	CU	CU	5.246 WEL SELKIRK AVE		SERVICED OFF CHARLES ST
291 SELKIRK AVE	20	20	4.86m WEL BLDG	0.5 W OF S/C	RECONNECT SERVICE
COMMERCIAL	CU	CU	5.182 WEL CHARLES ST		RECONNECT SERVICE

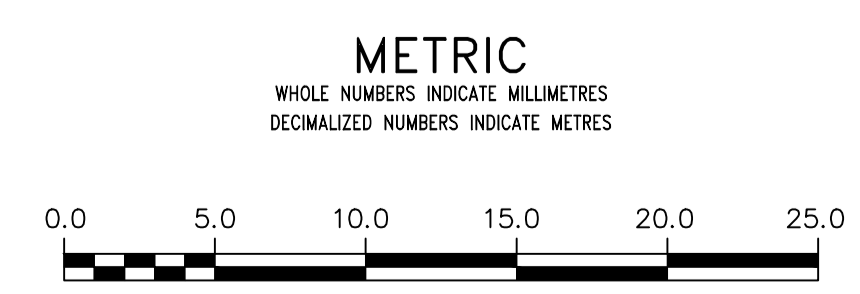
* SERVICES TO BE RENEWED TO R. ALL OTHERS TO BE RECONNECTED

NOTE: CHAINAGES SHOWN ARE ALONG N. R. OF SELKIRK AVENUE



FOR INDEX SEE D-15116

NOTE: ALL VALVES TO BE INSTALLED COUNTERCLOCKWISE TO CLOSE



WARNING
IF POWER EQUIPMENT OR EXPLOSIVES ARE TO BE USED FOR EXCAVATION ON THIS PROJECT THE CONTRACTOR MUST:
1) NOTIFY THE GAS COMPANY OF THE PROPOSED LOCATION OF EXCAVATION.
2) TAKE PRECAUTION TO AVOID DAMAGE TO GAS COMPANY INSTALLATIONS.
SEE PROVINCIAL REGULATION 210/72 FOR DETAILS

LOCATION APPROVED UNDERGROUND STRUCTURES
SUPV. U/G STRUCTURES COMMITTEE DATE
NOTE:
LOCATION OF UNDERGROUND STRUCTURES AS SHOWN ARE BASED ON THE BEST INFORMATION AVAILABLE BUT NO GUARANTEE IS GIVEN THAT ALL EXISTING UTILITIES ARE SHOWN OR THAT THE GIVEN LOCATIONS ARE EXACT. CONFIRMATION OF EXISTENCE AND EXACT LOCATION OF ALL SERVICES MUST BE OBTAINED FROM THE INDIVIDUAL UTILITIES BEFORE PROCEEDING WITH CONSTRUCTION.

B.M. ELEV.	NO.	REVISIONS	DATE	BY

DESIGNED BY	MJK	CHECKED BY	SC
DRAWN BY	BL	APPROVED BY	KZ
SCALE:	RELEASED FOR CONSTRUCTION		
HORIZONTAL	K. ZUREK		
VERTICAL	DATE 2018 05 10		
DATE	2018 05 10	DATE	2018 05 10

ENGINEER'S SEAL
ORIGINAL SIGNED BY S.R.J. COUNROYER
18/05/10
CONSULTANT DRAWING NUMBER

THE CITY OF WINNIPEG
WATER AND WASTE DEPARTMENT
ENGINEERING DIVISION

2018 WATER MAIN RENEWALS
CONTRACT 3
SELKIRK AVENUE
115 E OF SALTER STREET TO
39 E OF AIKINS STREET

SHEET 8 OF 12
CITY DRAWING NUMBER
D-15122