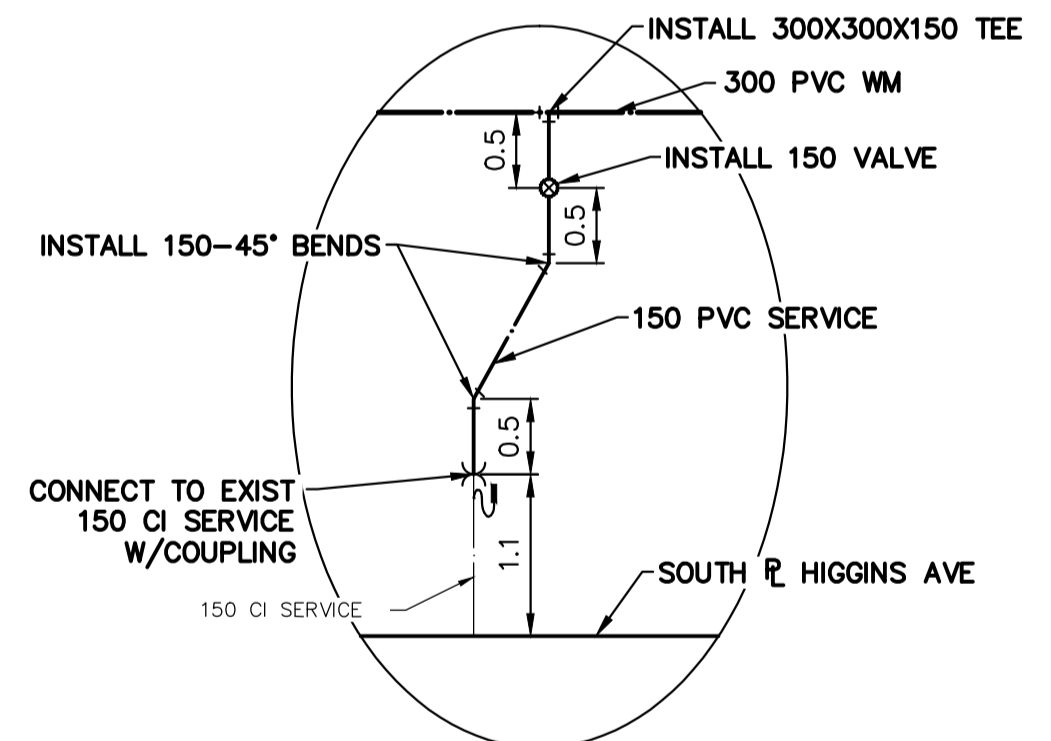
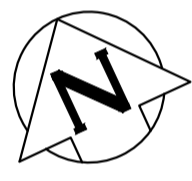
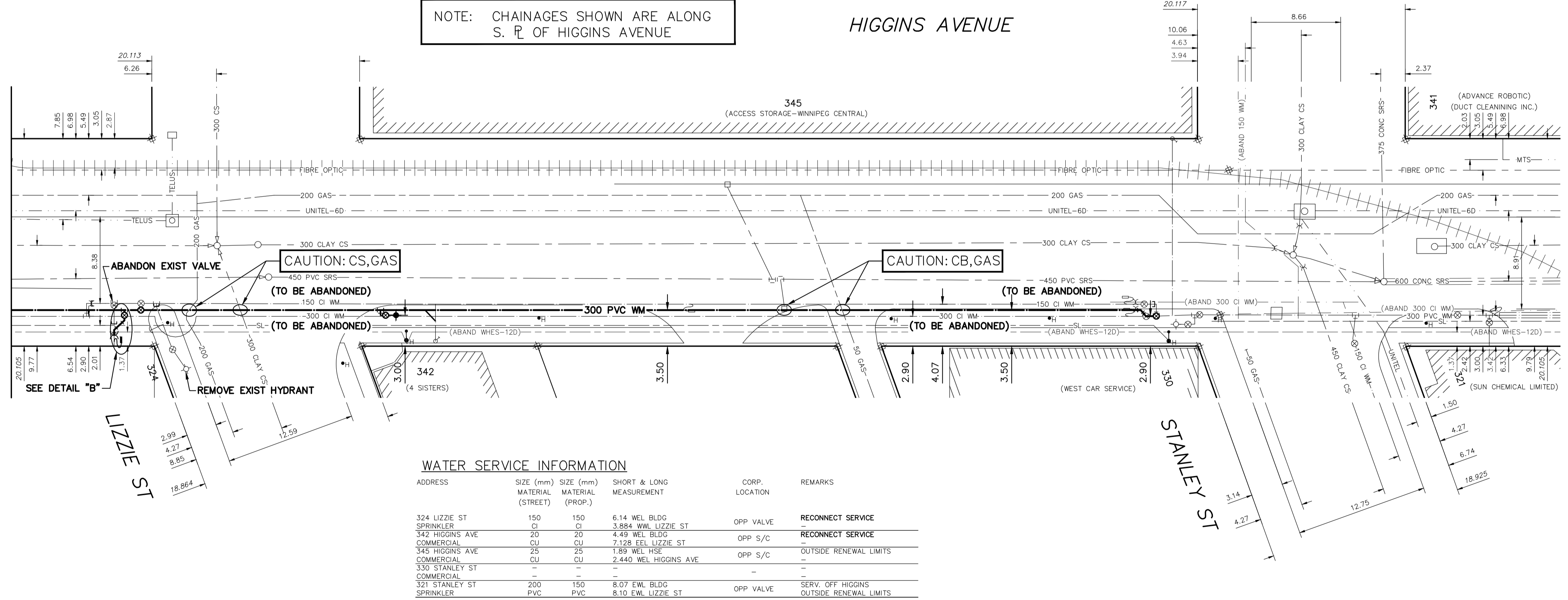


NOTE: CHAINAGES SHOWN ARE ALONG S. R. OF HIGGINS AVENUE

HIGGINS AVENUE

MATCHLINE 6+40.000
SEE DWG D-15119



DETAIL "B"
SCALE N.T.S.

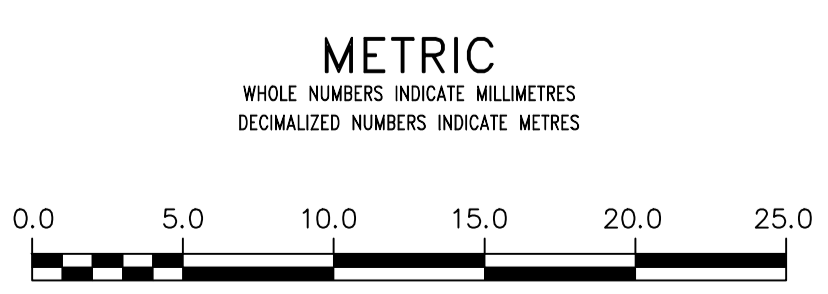
WATER SERVICE INFORMATION

ADDRESS	SIZE (mm) MATERIAL	SIZE (mm) MATERIAL (PROP.)	SHORT & LONG MEASUREMENT	CORP. LOCATION	REMARKS
324 LIZZIE ST	150 CI	150 CI	6.14 WEL BLDG 3.884 WVL LIZZIE ST	OPP VALVE	RECONNECT SERVICE
342 HIGGINS AVE	20 CU	20 CU	4.49 WEL BLDG	OPP S/C	RECONNECT SERVICE
345 HIGGINS AVE	25 CU	25 CU	1.89 WEL HSE	OPP S/C	OUTSIDE RENEWAL LIMITS
330 STANLEY ST	-	-	-	-	-
321 STANLEY ST	200 PVC	150 PVC	8.07 EWL BLDG 8.10 EWL LIZZIE ST	OPP VALVE	SERV. OFF HIGGINS OUTSIDE RENEWAL LIMITS

* SERVICES TO BE RENEWED TO R. ALL OTHERS TO BE RECONNECTED

FOR INDEX SEE D-11516

NOTE: ALL VALVES TO BE INSTALLED COUNTERCLOCKWISE TO CLOSE



WARNING
IF POWER EQUIPMENT OR EXPLOSIVES ARE TO BE USED FOR EXCAVATION ON THIS PROJECT THE CONTRACTOR MUST:
1) NOTIFY THE GAS COMPANY OF THE PROPOSED LOCATION OF EXCAVATION.
2) TAKE PRECAUTION TO AVOID DAMAGE TO GAS COMPANY INSTALLATIONS.
SEE PROVINCIAL REGULATION 210/72 FOR DETAILS

LOCATION APPROVED UNDERGROUND STRUCTURES
SUPV. U/G STRUCTURES COMMITTEE DATE
NOTE:
LOCATION OF UNDERGROUND STRUCTURES AS SHOWN ARE BASED ON THE BEST INFORMATION AVAILABLE BUT NO GUARANTEE IS GIVEN THAT ALL EXISTING UTILITIES ARE SHOWN OR THAT THE GIVEN LOCATIONS ARE EXACT. CONFIRMATION OF EXISTENCE AND EXACT LOCATION OF ALL UTILITIES MUST BE OBTAINED FROM THE INDIVIDUAL UTILITIES BEFORE PROCEEDING WITH CONSTRUCTION.

B.M. ELEV.	NO.	REVISIONS	DATE	BY

DESIGNED BY	MJK	CHECKED BY	SC
DRAWN BY	AJ	APPROVED BY	KZ
SCALE:	HORIZONTAL 1:250 VERTICAL 1:50		
DATE	2018 05 10	DATE	2018 05 10
PLOT DATE: 2018 05 10		K. ZUREK	

ENGINEER'S SEAL
ORIGINAL SIGNED BY S.R.J. COURNOYER 18/05/10
CONSULTANT DRAWING NUMBER

THE CITY OF WINNIPEG
WATER AND WASTE DEPARTMENT
ENGINEERING DIVISION

2018 WATER MAIN RENEWALS
CONTRACT 3
HIGGINS AVENUE
14 W OF LIZZIE STREET TO
15 E OF STANLEY STREET

SHEET 6 OF 12
CITY DRAWING NUMBER
D-15120