

WATER SERVICE INFORMATION

ADDRESS	SIZE (mm) MATERIAL (STREET)	SIZE (mm) MATERIAL (PROP.)	SHORT & LONG MEASUREMENT	CORP. LOCATION	REMARKS
711 CAVALIER DR	20	20	7.40m NSL HSE	1.0 S OF S/C	SERVICED OFF CAVALIER DR
RESIDENTIAL	CU	CU	11.008m>NNL DANBURY BAY		
115 DANBURY BAY	20	20	7.12m SNL HSE	0.2 N OF S/C	RECONNECT SERVICE
RESIDENTIAL	CU	CU	8.213m>SSL DANBURY BAY		
116 DANBURY BAY	20	20	4.90m SNL HSE		RECONNECT SERVICE
RESIDENTIAL	CU	CU	9.153m>SSL DANBURY BAY		
117 DANBURY BAY	20	20	7.86m SNL HSE		RECONNECT SERVICE
RESIDENTIAL	CU	CU	26.231m>SSL DANBURY BAY		
118 DANBURY BAY	20	20	4.79m SNL HSE	5.2 S OF S/C	RECONNECT SERVICE
RESIDENTIAL	CU	CU	24.872m>SSL DANBURY BAY		
119 DANBURY BAY	20	20	0.92m>NNL HSE	0.2 S OF S/C	RECONNECT SERVICE
RESIDENTIAL	CU	CU	37.707>SSL DANBURY BAY		
120 DANBURY BAY	20	20	2.80m SNL HSE		RECONNECT SERVICE
RESIDENTIAL	CU	CU	41.180m>SSL DANBURY BAY	2.9 N OF S/C	
122A DANBURY BAY	20	20	6.26m>EHL HSE		RECONNECT SERVICE
RESIDENTIAL	CU	CU	57.014m>SSL DANBURY BAY	10.6 N OF S/C	
122B DANBURY BAY	20	20	6.49m>WEL HSE	10.6 N OF S/C	RECONNECT SERVICE
RESIDENTIAL	CU	CU	582064>SSL DANBURY BAY		
124A DANBURY BAY	20	20	3.13m>EHL HSE		RECONNECT SERVICE
RESIDENTIAL	CU	CU	64.875m>SSL DANBURY BAY	16.5 N OF S/C	
182 DANBURY BAY	20	20	5.98m>NSL HSE	8.0 S OF S/C	RECONNECT SERVICE
RESIDENTIAL	CU	CU	81.688m>NSL DANBURY BAY		
183 DANBURY BAY	20	20	4.75m>NSL HSE	2.6 S OF S/C	RECONNECT SERVICE
RESIDENTIAL	CU	CU	77.148m>NSL DANBURY BAY		
184 DANBURY BAY	20	20	5.73m>SNL HSE	7.4 S OF S/C	RECONNECT SERVICE
RESIDENTIAL	CU	CU	64.946m>NSL DANBURY BAY		
185 DANBURY BAY	20	20	7.29m>SNL HSE	2.2 S OF S/C	RECONNECT SERVICE
RESIDENTIAL	CU	CU	60.678m>NSL DANBURY BAY		
186 DANBURY BAY	20	20	6.45m>SNL HSE		RECONNECT SERVICE
RESIDENTIAL	CU	CU	47.334m>NSL DANBURY BAY	6.6 S OF S/C	
187 DANBURY BAY	20	20	5.45m>SNL HSE	2.6 S OF S/C	RECONNECT SERVICE
RESIDENTIAL	CU	CU	43.922m>NSL DANBURY BAY		
188 DANBURY BAY	20	20	3.85m>NSL HSE		RECONNECT SERVICE
RESIDENTIAL	CU	CU	29.260m>NSL DANBURY BAY	4.0 S OF S/C	
189 DANBURY BAY	20	20	6.61m>NSL HSE	2.1 S OF S/C	RECONNECT SERVICE
RESIDENTIAL	CU	CU	28.265m>NSL DANBURY BAY		
191 DANBURY BAY	20	20	2.52m>NSL HSE		RECONNECT SERVICE
RESIDENTIAL	CU	CU	7.875m>NSL DANBURY BAY	0.2 N OF S/C	

* SERVICES TO BE RENEWED TO R. ALL OTHERS TO BE RECONNECTED

NOTE: CHAINAGES SHOWN ARE ALONG S. R. OF DANBURY BAY

INSTALLATION EQUIPMENT FOR THE PROPOSED WORKS SHALL NOT CROSS OR TRAVEL ALONG EITHER SIDE OF THE AQUEDUCT WITHIN A LATERAL DISTANCE OF 3.0 METERS FROM THE CENTERLINE OF THE AQUEDUCT AND/OR FEEDERMAN.

CONCRETE DEMOLITION AND REMOVAL WITHIN 3 METERS HORIZONTALLY OF THE AQUEDUCT AND/OR FEEDERMAN SHALL BE COMPLETED BY SAWCUTTING AND REMOVAL, OR BY THE USE OF HAND HELD JACKHAMMERS. USE OF MACHINE MOUNTED CONCRETE BREAKERS ABOVE THE AQUEDUCT AND/OR FEEDERMAN SHALL NOT BE PERMITTED.

DO NOT OPERATE VIBRATORY EQUIPMENT OVER OR WITHIN 3.0 METERS OF THE AQUEDUCT AND/OR FEEDERMAN.

A MINIMUM CLEARANCE OF 1.0 METER MUST BE PROVIDED BETWEEN THE UNDERSIDE OF ANY EXISTING AQUEDUCT OR FEEDERMAN AND THE TOP OF THE PROPOSED WORKS. THIS INSTALLATION BY TRENCHLESS METHOD ONLY.

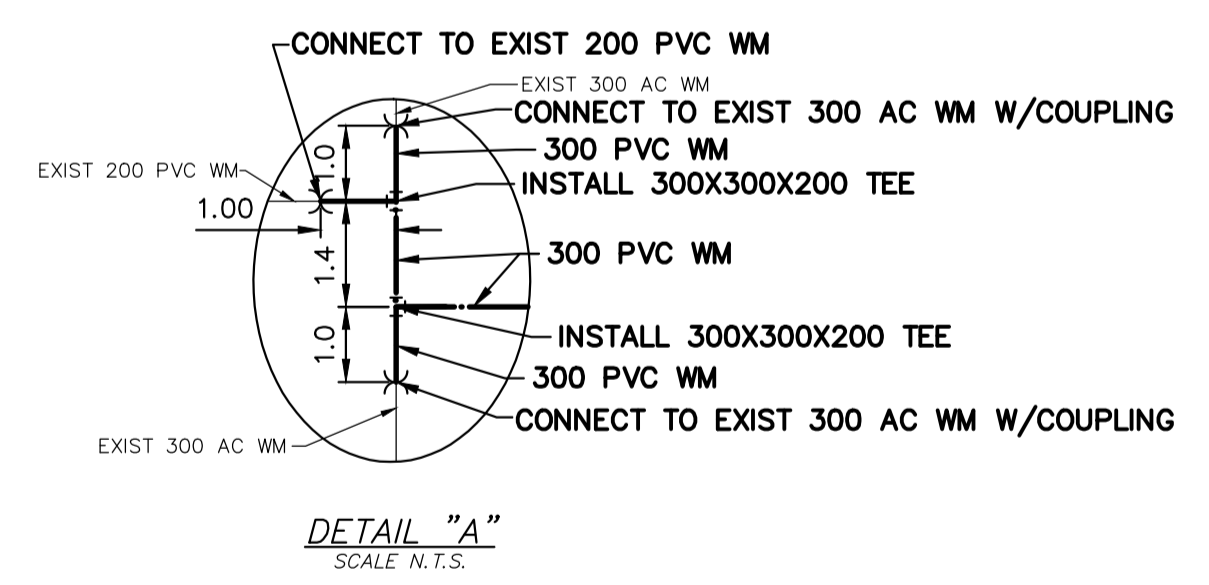
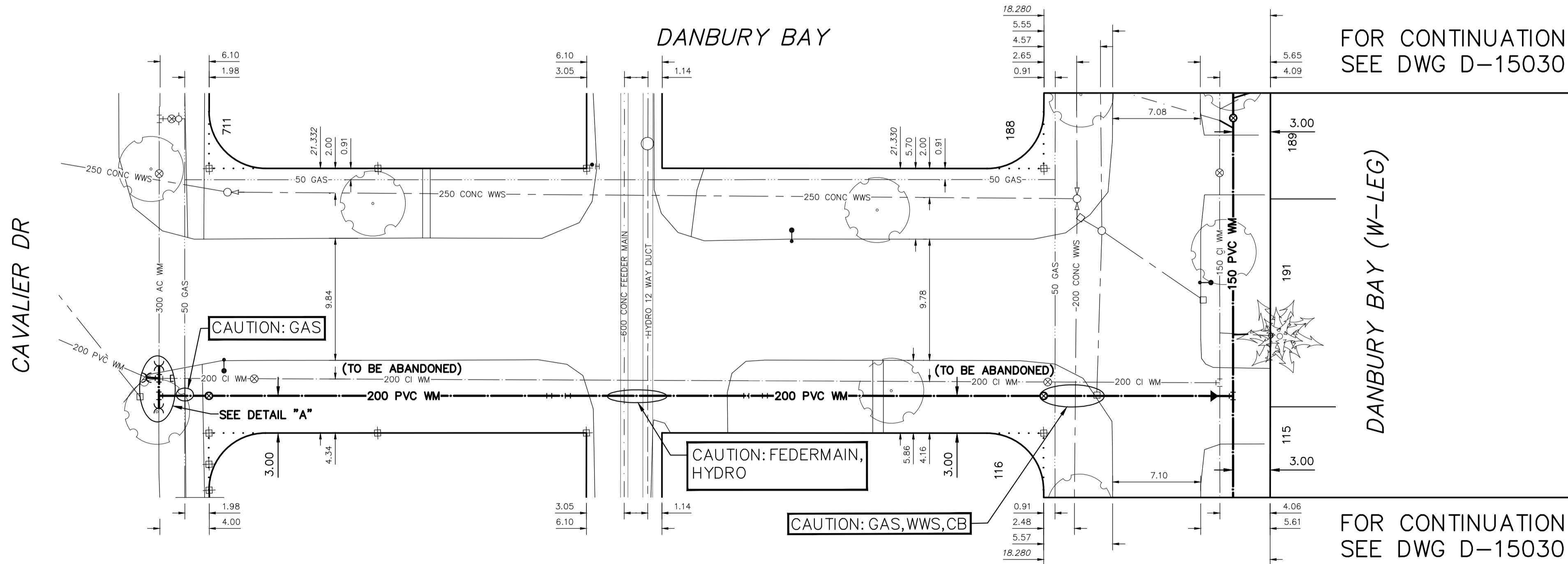
A MINIMUM CLEARANCE OF 0.5 METER MUST BE PROVIDED BETWEEN THE UNDERSIDE OF THE PROPOSED WORKS AND THE TOP OF ANY EXISTING AQUEDUCT OR FEEDERMAN BY TRENCHLESS OR OPEN TRENCH.

A SHAFT MUST BE EXCAVATED BY SOFT DIG METHODS 4.0 METERS FROM THE CENTERLINE OF THE AQUEDUCT AND/OR FEEDERMAN TO CONFIRM THE ALIGNMENT AND ELEVATION OF THE DRILLING ROD BEFORE IT CROSSES OVER OR UNDER THE AQUEDUCT AND/OR FEEDERMAN. THIS CONFIRMATION MUST BE WITNESSED BY A CITY REPRESENTATIVE.



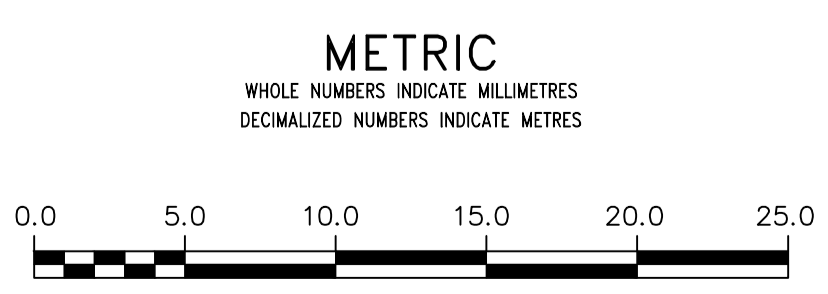
FOR CONTINUATION SEE DWG D-15030

FOR CONTINUATION SEE DWG D-15030



FOR INDEX SEE D-15024

NOTE: ALL VALVES TO BE INSTALLED COUNTERCLOCKWISE TO CLOSE



WARNING
IF POWER EQUIPMENT OR EXPLOSIVES ARE TO BE USED FOR EXCAVATION ON THIS PROJECT THE CONTRACTOR MUST:
1) NOTIFY THE GAS COMPANY OF THE PROPOSED LOCATION OF EXCAVATION.
2) TAKE PRECAUTION TO AVOID DAMAGE TO GAS COMPANY INSTALLATIONS.
SEE PROVINCIAL REGULATION 210/72 FOR DETAILS

LOCATION APPROVED
UNDERGROUND STRUCTURES
SUPV. U/G STRUCTURES COMMITTEE DATE
NOTE:
LOCATION OF UNDERGROUND STRUCTURES AS SHOWN ARE BASED ON THE BEST INFORMATION AVAILABLE BUT NO GUARANTEE IS GIVEN THAT ALL EXISTING UTILITIES ARE SHOWN OR THAT THE GIVEN LOCATIONS ARE EXACT. CONFIRMATION OF EXISTENCE AND EXACT LOCATION OF ALL SERVICES MUST BE OBTAINED FROM THE INDIVIDUAL UTILITIES BEFORE PROCEEDING WITH CONSTRUCTION.

B.M. ELEV.	NO.	REVISIONS	DATE	BY

DESIGNED BY	TS	CHECKED BY	SC
DRAWN BY	BL	APPROVED BY	KZ
SCALE:	HORIZONTAL 1:250 VERTICAL 1:50	RELEASED FOR CONSTRUCTION	K.ZUREK
DATE	2018 03 22	DATE	2018 03 22

ENGINEER'S SEAL
ORIGINAL SIGNED
By S.R.J. COURNOYER
18/03/22
CONSULTANT DRAWING NUMBER

THE CITY OF WINNIPEG
WATER AND WASTE DEPARTMENT
ENGINEERING DIVISION
2018 WATER MAIN RENEWALS
CONTRACT 2
DANBURY BAY
CAVALIER DRIVE TO
DANBURY BAY (W-LEG)
SHEET 7 OF 12
CITY DRAWING NUMBER
D-15029