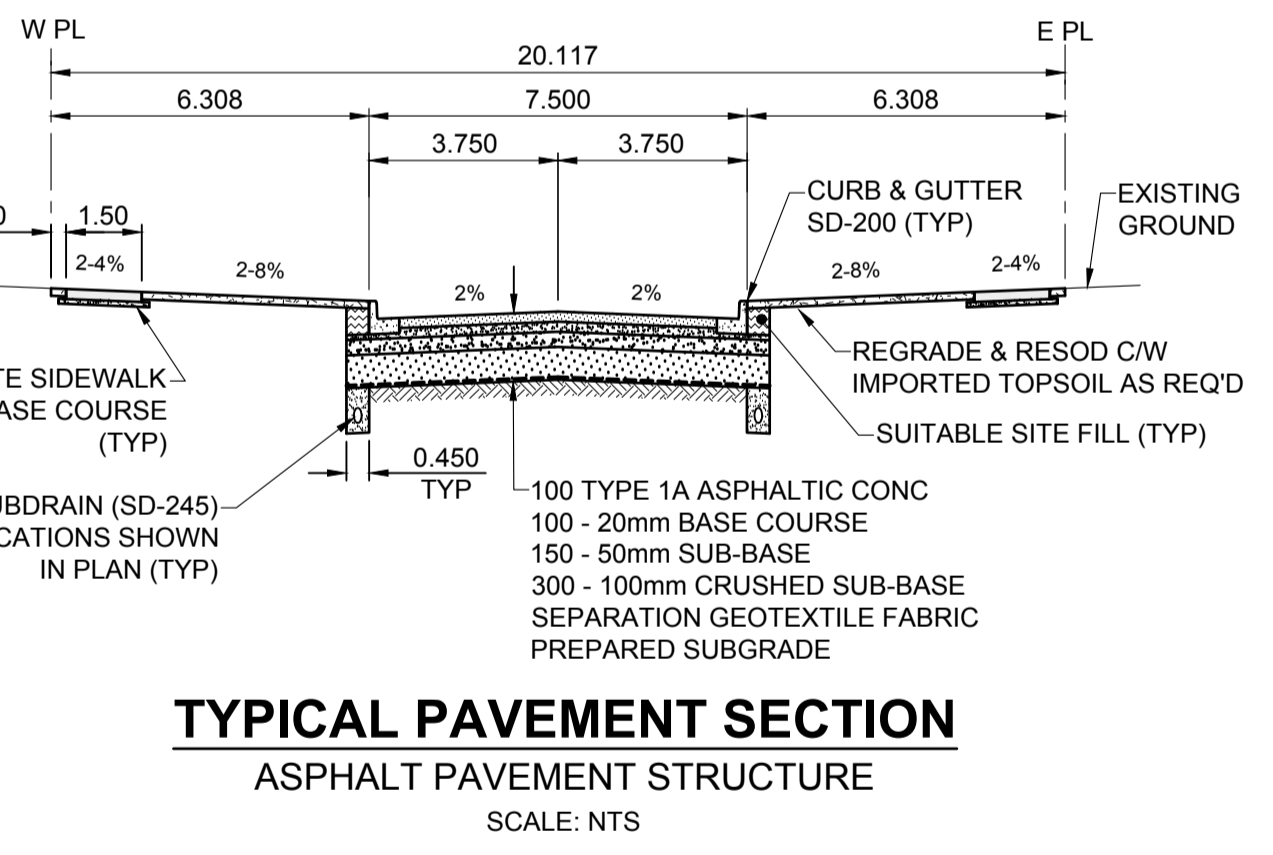
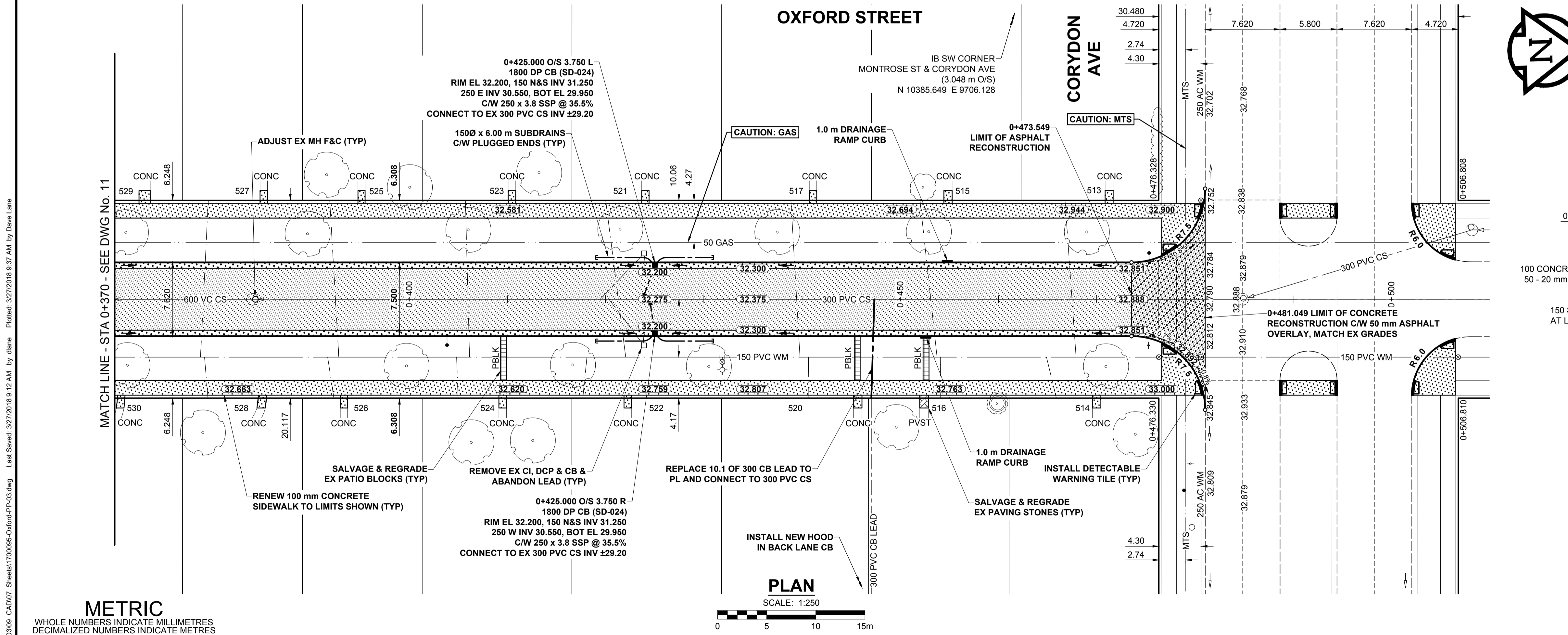


- NOTES**
- ADJUST MH AND CB RIMS TO NEW GRADES.
 - LAMP STANDARDS, HYDRO POLES, AND ANCHORS THAT REQUIRE TEMPORARY SUPPORT, REMOVAL OR REPLACEMENT, TO BE DONE SO AT THE EXPENSE OF THE CONTRACTOR AS NECESSARY.
 - CONTRACTOR TO REGRADE/RENEW EXISTING PRIVATE SIDEWALKS TO LIMITS AS SHOWN. SIDEWALKS TO BE RENEWED WITH CONCRETE UNLESS NOTED OTHERWISE.
 - CONTRACTOR TO TAKE PRECAUTIONARY STEPS TO PROTECT EXISTING TREES WITHIN THE LIMITS OF CONSTRUCTION FROM DAMAGE FROM CONSTRUCTION ACTIVITIES AS OUTLINED IN THE SPECIFICATIONS.
 - CONTRACTOR TO CONFIRM THE LOCATION OF ALL UTILITIES/SERVICES IN THE FIELD PRIOR TO CONSTRUCTION.
 - CB SD-023 & SD-024 OFFSETS ARE DIMENSIONED TO BOC. CB SD-025 OFFSETS ARE DIMENSIONED O/C.
 - IN GENERAL, PAVEMENT AND SIDEWALK AREAS TO BE REMOVED. MATCH RECONSTRUCTION LIMITS.
 - REFER TO BID OPPORTUNITY FOR DETAILS REGARDING TRAFFIC MANAGEMENT.
 - EXISTING LONG WATER SERVICES TO BE INSULATED (SD-018). REFER TO BID OPPORTUNITY FOR FURTHER REQUIREMENTS AND AS NOTED IN PLAN.
 - ALL COSTS, MATERIALS AND LABOR ASSOCIATED WITH THE RESTORATION OF THE CATHODIC PROTECTED WATERMAIN WILL BE RESPONSIBILITY OF THE CONTRACTOR.
 - MODIFIED BARRIER CURB & GUTTER INLET FRAME & COVER TF-122.
 - ADD 200.000 m TO ABBREVIATED ELEVATIONS TO OBTAIN GEODETIC ELEVATIONS.



METRIC
WHOLE NUMBERS INDICATE MILLIMETRES
DECIMALIZED NUMBERS INDICATE METRES

---	GAS	○	MANHOLE	●	CONCRETE PAVEMENT
---	MTS HANDWELL/PEDESTAL	□	CATCH BASIN/CATCH PIT	■	CONC SIDEWALK/MEDIAN
---	HYDRO HANDWELL/CABINET	△	CURB INLET WITH BOX	▲	ASPHALT PAVEMENT
---	CATV/FIBRE OPTIC	○	TREE	▲	PAVING STONE
---	TRAFFIC SIGNALS/PISTON	⊕	TEST HOLE	▲	GRAVEL
---	LAND DRAINAGE SEWER	⊕	PROPERTY LINE	▲	RAMP CURB
---	SANITARY/COMBINED SEWER	⊕	SURVEY BAR	▲	PLANING/REMOVAL
---	CB LEAD/SSP/DCP	⊕	FENCE	▲	
---	WATERMAIN	⊕	BOC/EDGE OF PAVEMENT	▲	
---	SUBDRAIN	33.000	ELEVATION	(33.333)	
---	DITCH	←	TRAFFIC SIGN	▲	
---	EXISTING	---	LEGEND - PLAN	---	NEW

---	LOCATION APPROVED UNDERGROUND STRUCTURES	---	DATE
---	DATE	---	---
---	NOTE: LOCATION OF UNDERGROUND STRUCTURES AS SHOWN ARE BASED ON THE BEST INFORMATION AVAILABLE BUT NO GUARANTEE IS GIVEN THAT ALL EXISTING UTILITIES ARE SHOWN OR THAT THE GIVEN LOCATIONS ARE EXACT. CONFIRMATION OF EXISTENCE AND EXACT LOCATION OF ALL SERVICES MUST BE OBTAINED FROM THE INDIVIDUAL UTILITIES BEFORE PROCEEDING WITH CONSTRUCTION.	---	---

---	BM 51-018	S.W. Cor. Fleet Ave. & Cambridge St., Brass plug in
---	ELEV 232.638 m	11 m Conc. pile, 2.3 m N. of S.L. Fleet Ave. & 0.3 m W. of W.L. Cambridge St.

---	DESIGNED BY	JGK	CHECKED BY	RPB
---	DRAWN BY	DML	APPROVED BY	BWB
---	BY	DATE	RELEASED FOR CONSTRUCTION	DATE
---	18/03/28	JGK	1:250	18/03/02
---	18/03/02	JGK	1:10	DATE
---	YY/MM/DD	BY	DATE	DATE

MORRISON HERSHFIELD

PROFESSIONAL'S SEAL

PRELIMINARY DRAWING

NOT TO BE USED FOR CONSTRUCTION

CONSULTANT FILE NAME
1700095-Oxford-PP-03.dwg

THE CITY OF WINNIPEG
PUBLIC WORKS DEPARTMENT
ENGINEERING DIVISION

2018 LOCAL STREETS PACKAGE
OXFORD STREET
FLEET AVE TO CORYDON AVE
ASPHALT RECONSTRUCTION
PAVING AND GRADING
STA 0+370 TO CORYDON AVE

CITY DRAWING NUMBER
N/A

SHEET 12 OF 25

DRAWING No. 12

BID OPPORTUNITY No. 127-2018