

**LEGEND**

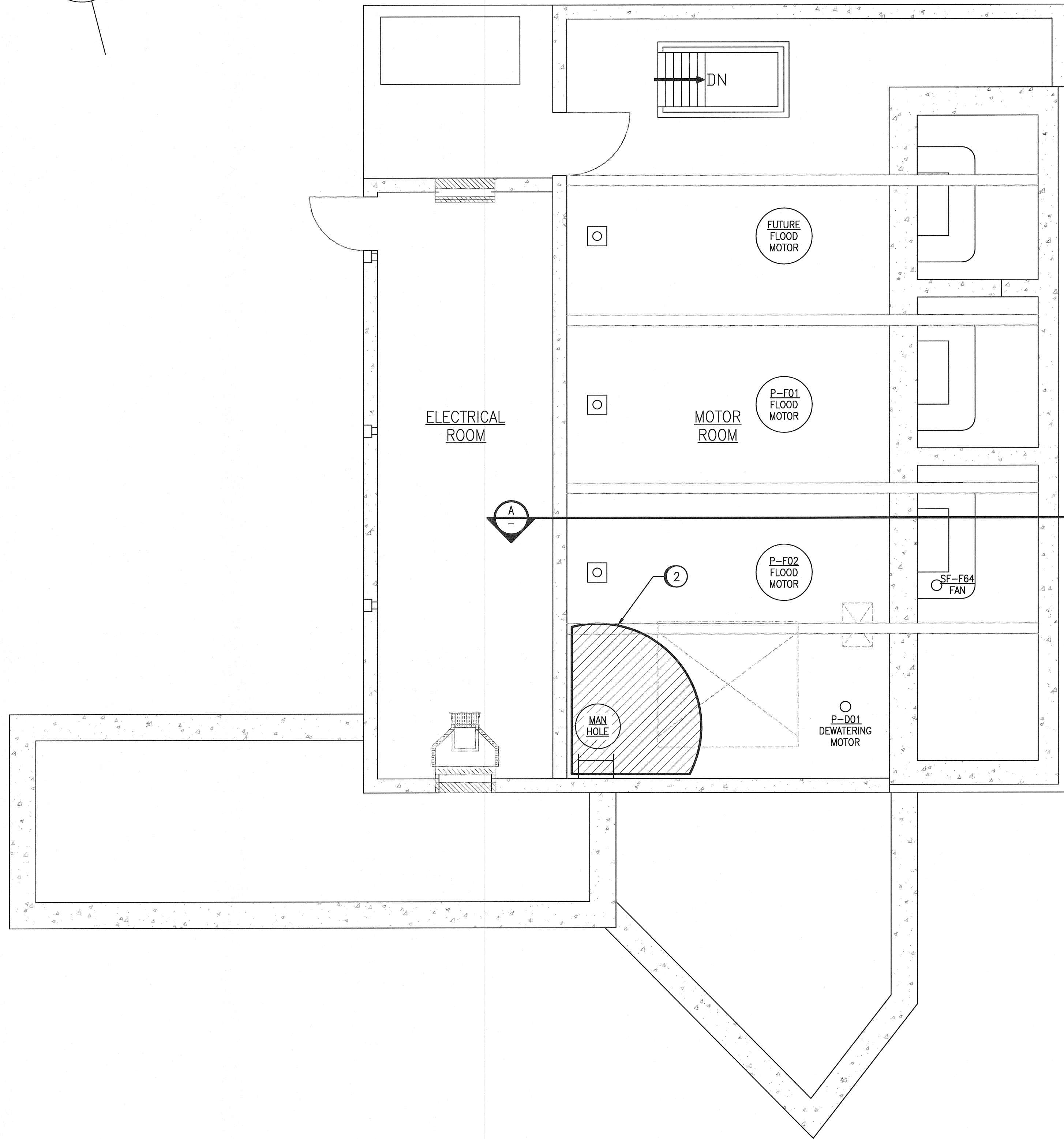
- HAZARDOUS ZONE 1, GROUP IIA & CATEGORY 2 WET (MOISTURE & CORROSIVE)
- HAZARDOUS ZONE 2, GROUP IIA
- CATEGORY 1 (MOISTURE)

**GENERAL NOTES:**

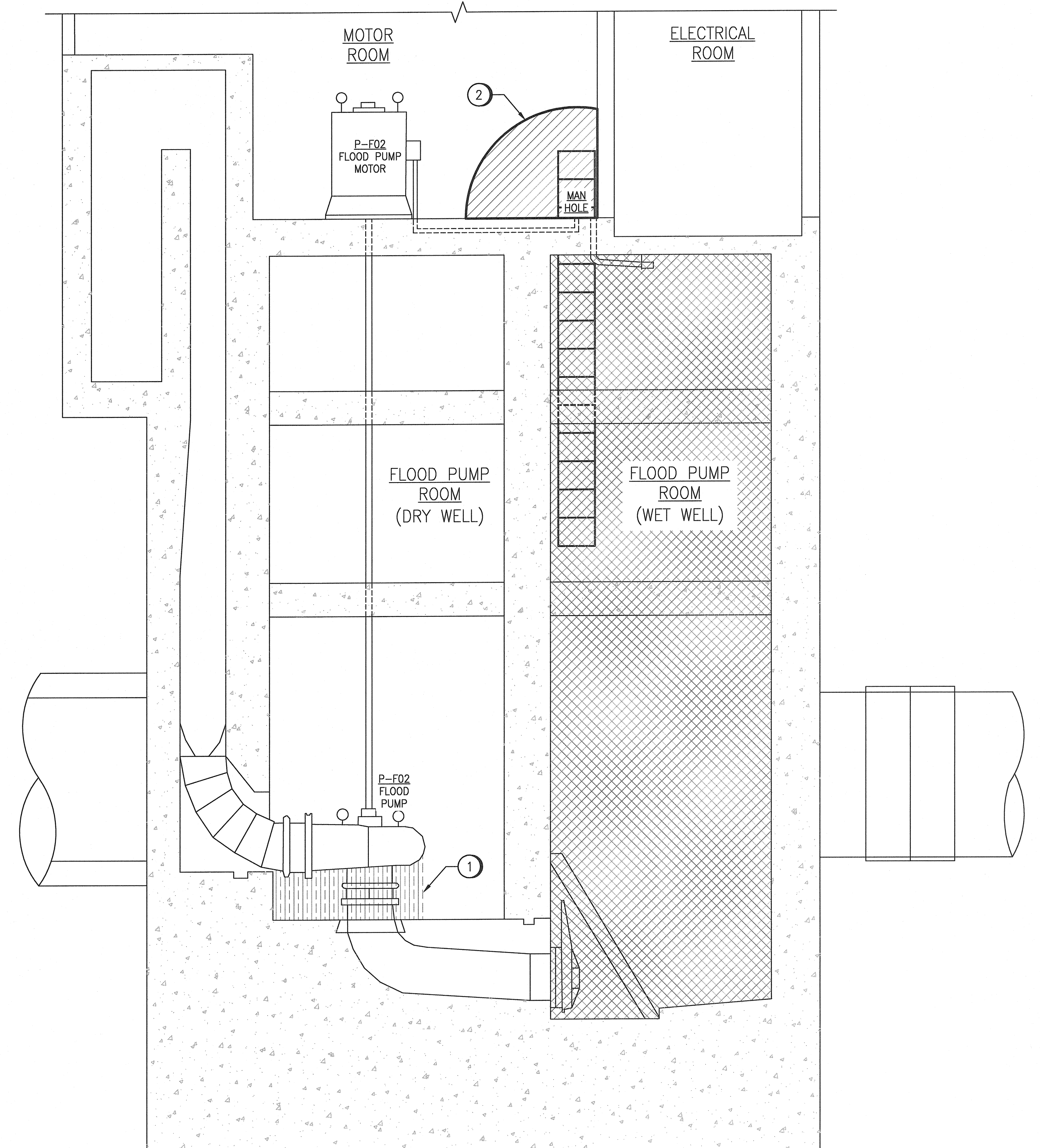
1. THE REQUIRED TEMPERATURE CODE FOR ALL HAZARDOUS LOCATION ON THIS DRAWING IS T2A (280°C).

**SPECIFIC NOTES:**

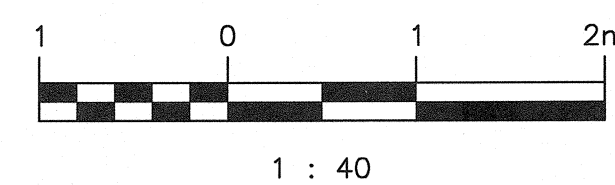
- ① THE AREAS IN THE FLOOD PUMP ROOM (DRY WELL) THAT ARE BELOW PIPING, ON WHICH MOISTURE MAY CONDENSE, ARE CLASSIFIED AS A CATEGORY 1 LOCATION.
- ② AREAS WITHIN 1.5m OF THE MANHOLE IS CLASSIFIED AS A ZONE 2 LOCATION.



**MAIN FLOOR PLAN**  
SCALE: 1 : 40



**SECTION A-A**  
SCALE: 1 : 40

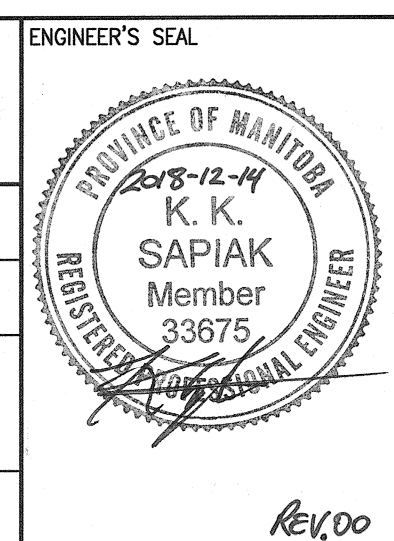


NO.	REVISIONS	DATE	DESIGN	CHECK
00	ISSUED FOR TENDER AND CONSTRUCTION	2018/12/14	KS	BC

**SNC-LAVALIN INC.**  
148 Notaire Park Way  
Winnipeg, MB, Canada R3P 0X7  
204-786-8080

DESIGNED BY: K. SAPIAK  
DRAWN BY: C. DUBON  
SCALE: 1 : 40  
DATE: 2018/06/27

CHECKED BY: B. CLEVEN  
APPROVED BY: B. CLEVEN  
ISSUED FOR CONSTRUCTION BY: K. ZUREK  
DATE: 2018/12/14



**THE CITY OF WINNIPEG**  
WATER AND WASTE DEPARTMENT

ROLAND FLOOD PUMPING STATION  
2019 UPGRADES  
HAZARDOUS LOCATION PLAN

CITY DRAWING NUMBER	SHEET	REV.	SIZE
1-0179F-E0010	001	00	A1