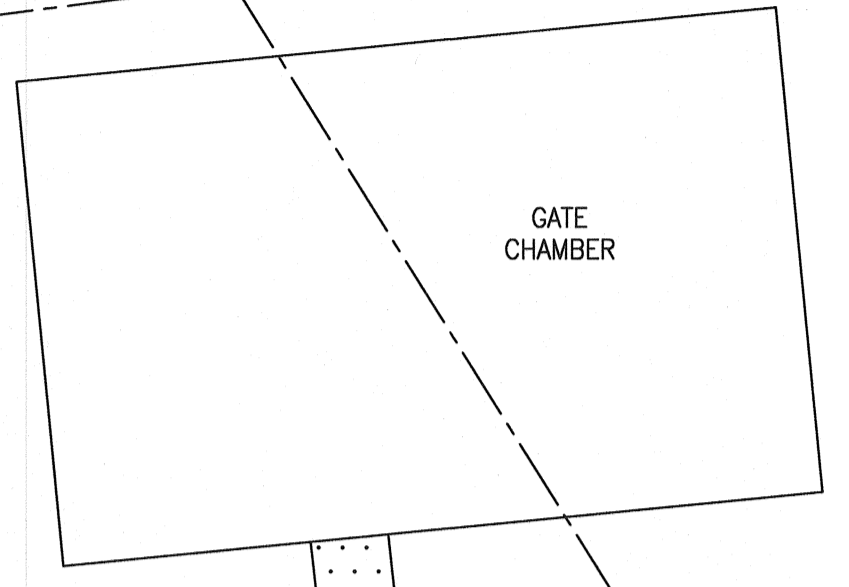
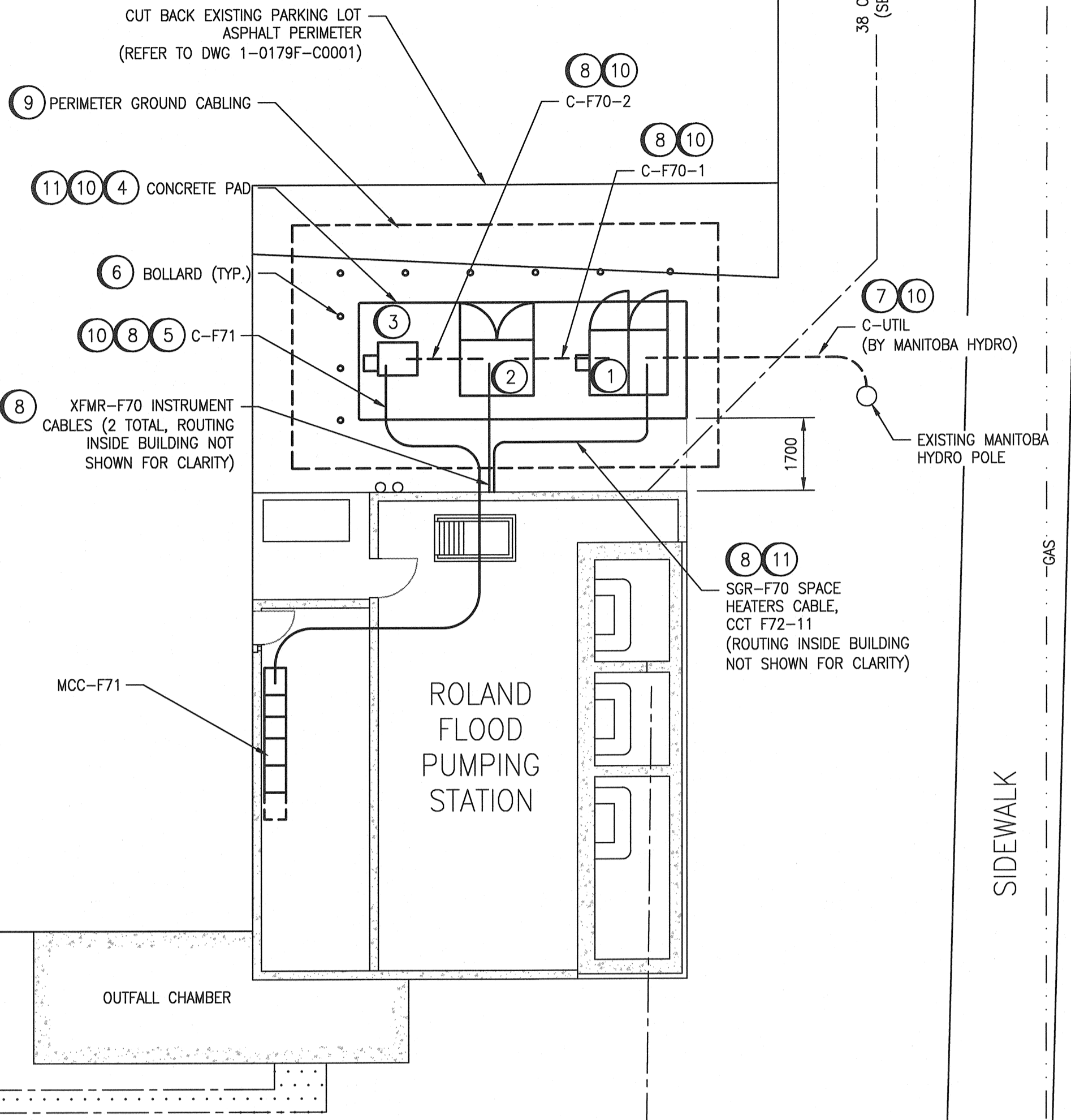


TO RED RIVER



1000 SRS

PARKING LOT



MCC-F71

ROLAND FLOOD PUMPING STATION

OUTFALL CHAMBER

SIDEWALK

WATT STREET

1625 x 2060 CSP

1525 CSP

GENERAL NOTES:

- COORDINATE WITH MANITOBA HYDRO TO ARRANGE FOR A 4160V SERVICE REPLACEMENT. CONFIRM LOCATION OF NEW UTILITY POLE AND ROUTING OF CONDUITS AND CABLING TO THE SERVICE EQUIPMENT.
- THE EXISTING SERVICE TRANSFORMER AND 600V DISTRIBUTION IS CURRENTLY FED FROM THE HYDRO POLE AT THE NORTH-EAST CORNER OF THE STATION. MANITOBA HYDRO MAY RE-UTILIZE OR REPLACE THIS POLE.
- MANITOBA HYDRO MAY INSTALL A NEW HYDRO POLE AT AN ALTERNATE LOCATION. A POTENTIAL NEW LOCATION IS NORTH-EAST OF THE STATION. COORDINATE WITH MANITOBA HYDRO TO CONFIRM EXACT LOCATION OF NEW POLE.
- THE RESULTANT INSTALLATION SHALL BE SUITABLE FOR TRANSFER OF OWNERSHIP OF THE PAD-MOUNT 5KV SWITCHGEAR SGR-F70 AND TRANSFORMER XFMR-F70 FROM THE CITY OF WINNIPEG TO MANITOBA HYDRO. TRANSFER OF OWNERSHIP NOT WITHIN THE SCOPE OF THIS PROJECT.
- NO TEMPORARY POWER FROM MANITOBA HYDRO IS REQUIRED FOR THE FLOOD PUMPS WHILE DEMOLITION/CONSTRUCTION IS UNDERWAY. A TEMPORARY GENERATOR WILL NEED TO BE PROVIDED FOR LOADS ASSOCIATED WITH HEATING, LIGHTING, ETC DURING DEMOLITION AND NEW CONSTRUCTION. THE STATION CONTAINS DOMESTIC WATER PIPING AND ASSOCIATED HEAT TRACING. IT IS THE RESPONSIBILITY OF THE CONTRACTOR TO ENSURE THE DOMESTIC WATER PIPING DOES NOT FREEZE. CONTRACTOR IS RESPONSIBLE FOR ANY DAMAGES RESULTING FROM DOMESTIC WATER PIPING FREEZING.
- ALL SEWER AND UTILITY LOCATIONS SHOWN ARE APPROXIMATE. CONTRACTOR TO LOCATE SERVICES AND PROVIDE REDLINE MARKUPS FOR ANY DEVIATIONS FROM THAT SHOWN ON THIS DRAWING.
- ONLY ONE (1) CABLING RUN FOR ALL 4160 AND 600 VAC CABLES ARE SHOWN FOR CLARITY.

CONSTRUCTION NOTES

- PROVIDE AND INSTALL NEW 5KV PAD-MOUNT SWITCHGEAR, SGR-F70. SWITCHGEAR SHALL HAVE SEPARATE COMPARTMENTS FOR FUSIBLE DISCONNECT SWITCH AND 5KV UTILITY METERING.
- PROVIDE AND INSTALL NEW 4160:600V PAD-MOUNT SERVICE TRANSFORMER, XFMR-F70.
- PROVIDE AND INSTALL NEW 600V CUSTOMER SERVICE TERMINATION ENCLOSURE, CSTE-F70.
- PROVIDE AND INSTALL NEW PILES AND CONCRETE PAD, COMPLETE WITH CABLE SLEEVES. REFER TO STRUCTURAL DRAWINGS FOR PAD DETAIL. CONCRETE PAD EAST EDGE SHALL ALIGN WITH ROLAND STATION BUILDING EAST WALL. MAINTAIN A MINIMUM 1700mm CLEARANCE FROM PAD SOUTH PERIMETER TO ROLAND STATION BUILDING NORTH WALL.
- PROVIDE AND INSTALL DIRECT BURIED CABLING C-F71 BETWEEN THE CSTE-F70 AND STATION NORTH WALL FOR CONNECTION TO MCC-F71 IN THE ELECTRICAL ROOM. REFER TO DRAWING 1-0179F-E0006, SECTION 6 FOR INSTALLATION DETAILS.
- PROVIDE AND INSTALL BOLLARDS AS SHOWN. INSTALLATION TO BE AS PER CITY OF WINNIPEG DRAWING SCD-135.
- IT IS THE RESPONSIBILITY OF THE CONTRACTOR TO EXCAVATE TRENCH AREA FOR MANITOBA HYDRO TO INSTALL DIRECT BURIED UTILITY CABLING C-UTIL. ONCE CABLING HAS BEEN INSTALLED IN THE TRENCH, CONTRACTOR TO BACK FILL TRENCH, REFER TO DRAWING 1-0179F-E0006, SECTION A.
- PROVIDE AS-BUILT MARKUPS SHOWING THE LOCATIONS OF ALL NEW CABLES AND EQUIPMENT.
- PROVIDE AND INSTALL 152mm DEEP CRUSHED ROCK WITHIN THE AREA BOUND BY THE PERIMETER GROUND CABLING. CRUSHED ROCK SHALL EXTEND A MINIMUM OF 1000mm BEYOND THE PERIMETER GROUND CABLING. EXCAVATE AREA PRIOR TO INSTALLATION OF CRUSHED ROCK SUCH THAT THE CRUSHED ROCK IS TOP-FLUSH WITH SURROUNDING GRADE. REFER TO DRAWING 1-0179F-E0011, DETAIL 2.
- PROVIDE AND INSTALL 103mm RIGID PVC CONDUITS FOR ALL 4160 AND 600 VAC CABLES EMBEDDED AND/OR DIRECT BURIED BELOW SERVICE EQUIPMENT PAD. MAINTAIN A MINIMUM OF 100% CONDUIT DIAMETER SPACING BETWEEN CONDUITS
- PROVIDE AND INSTALL 53mm RIGID PVC CONDUITS FOR ALL GROUNDING CABLES, CONTROL/INSTRUMENT CABLES AND 120 VAC POWER CABLES EMBEDDED AND/OR DIRECT BURIED BELOW SERVICE EQUIPMENT PAD.

SITE PLAN

SCALE: 1 : 100

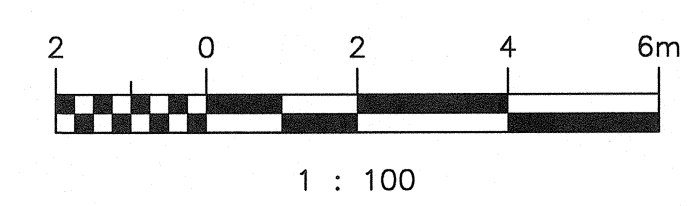
MANITOBA HYDRO SCOPE OF WORK:

- PROVIDE AND INSTALL NEW UTILITY CABLE (C-UTIL) FROM HYDRO POLE TO 5KV SWITCHGEAR SGR-F70 FUSED DISCONNECT COMPARTMENT.
- PROVIDE AND INSTALL NEW METER ALONG WITH METERING TRANSFORMERS IN 5KV SWITCHGEAR SGR-F70 METERING COMPARTMENT.

LEGEND:

- EXISTING
- NEW WORK
- - - NEW WORK, HIDDEN/BURIED

1-0179F-E0009	ELECTRICAL PLAN LAYOUT MAIN FLOOR CABLE TRAY
1-0179F-E0008	ELECTRICAL PLAN LAYOUT MAIN AND LOWER LEVEL FLOOR
1-0179F-E0006	ELECTRICAL INSTALLATION DETAILS 600 VAC POWER CABLING
1-0179F-E0005	ELECTRICAL INSTALLATION DETAILS SERVICE EQUIPMENT
1-0179F-E0003	ELECTRICAL SINGLE LINE
DRAWING NUMBER	REFERENCE DRAWINGS



SNC-Lavalin Inc. 148 Notaire Park Way Winnipeg, MB, Canada R3P 0X7 204-786-8080		ENGINEER'S SEAL
DESIGNED BY: K. SAPIAK	CHECKED BY: B. CLEVEN	CONSULTANT NO.: DATE: 2018/06/26 DATE: 2018/12/14
DRAWN BY: Y. KONIG	APPROVED BY: B. CLEVEN	
SCALE: 1 : 100	ISSUED FOR CONSTRUCTION BY: K. ZUREK	
00 ISSUED FOR TENDER AND CONSTRUCTION 2018/12/14 KS BC NO. REVISIONS DATE DESIGN CHECK		

THE CITY OF WINNIPEG WATER AND WASTE DEPARTMENT	
ROLAND FLOOD PUMPING STATION 2019 UPGRADES ELECTRICAL SITE PLAN	
CITY DRAWING NUMBER	SHEET REV. SIZE
1-0179F-E0004	001 00 A1