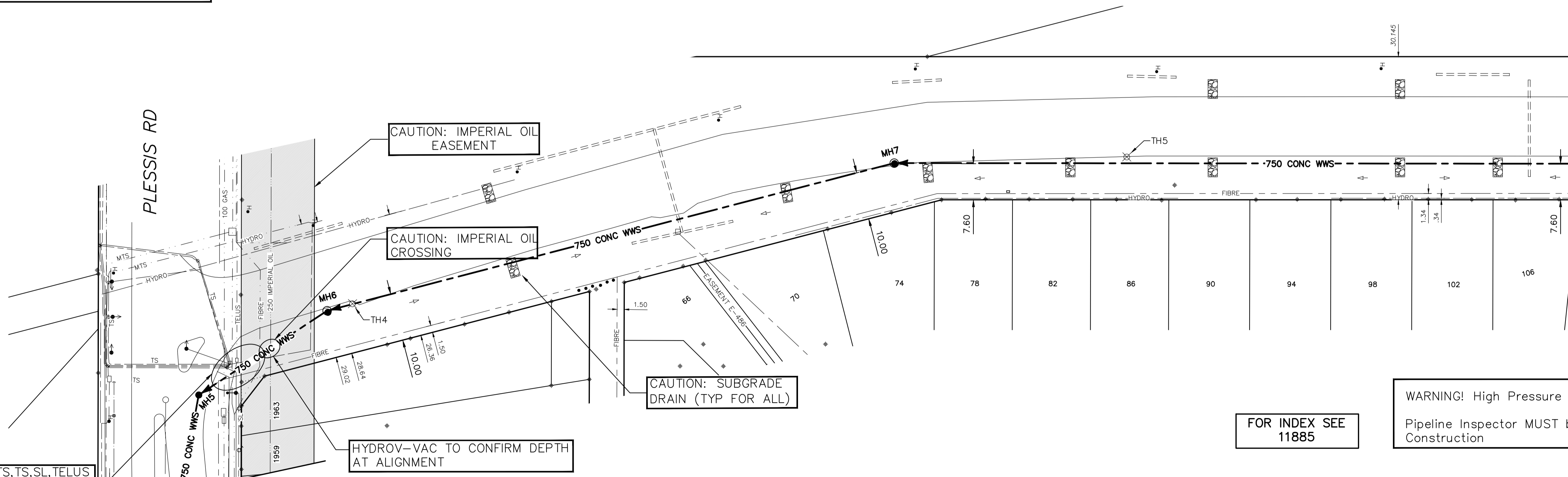


NOTE: CHAINAGES SHOWN ARE ALONG S SHOULDER OF GUNN RD

GUNN ROAD



MATCHLINE 3+75.000
SEE DWG 11889

CAUTION: MTS, TS, SL, TELUS FIBRE
FOR CONTINUATION SEE DWG 11887

WARNING
IF POWER EQUIPMENT OR EXPLOSIVES ARE TO BE USED FOR EXCAVATION ON THIS PROJECT THE CONTRACTOR MUST:
1) NOTIFY THE GAS COMPANY OF THE PROPOSED LOCATION OF EXCAVATION.
2) TAKE PRECAUTION TO AVOID DAMAGE TO GAS COMPANY INSTALLATIONS.
SEE PROVINCIAL REGULATION 210/72 FOR DETAILS

LOCATION APPROVED UNDERGROUND STRUCTURES
SUPV. U/G STRUCTURES COMMITTEE DATE
NOTE: LOCATION OF UNDERGROUND STRUCTURES AS SHOWN ARE BASED ON THE BEST INFORMATION AVAILABLE BUT NO GUARANTEE IS GIVEN THAT ALL EXISTING UTILITIES ARE SHOWN OR THAT THE GIVEN LOCATIONS ARE EXACT. CONFIRMATION OF EXISTENCE AND EXACT LOCATION OF ALL SERVICES MUST BE OBTAINED FROM THE INDIVIDUAL UTILITIES BEFORE PROCEEDING WITH CONSTRUCTION.

NO.	REVISIONS	DATE	BY

DESIGNED BY	DB	CHECKED BY	DB
DRAWN BY	RS	APPROVED BY	KZ
SCALE:	HORIZONTAL 1:500 VERTICAL 1:50	RELEASED FOR CONSTRUCTION	K. ZUREK
DATE	2018 12 13	DATE	2018 12 12

ENGINEER'S SEAL
ORIGINAL SIGNED BY K.R. ZUREK 18/12/12
CONSULTANT DRAWING NUMBER

THE CITY OF WINNIPEG
WATER AND WASTE DEPARTMENT
ENGINEERING DIVISION
NORTH TRANSCONA WASTE WATER
INTERCEPTOR SEWER - PLESSIS ROAD AND GUNN ROAD
GUNN ROAD
PLESSIS ROAD TO
275 E OF PLESSIS ROAD
SHEET 5 OF 10
CITY DRAWING NUMBER
11888

