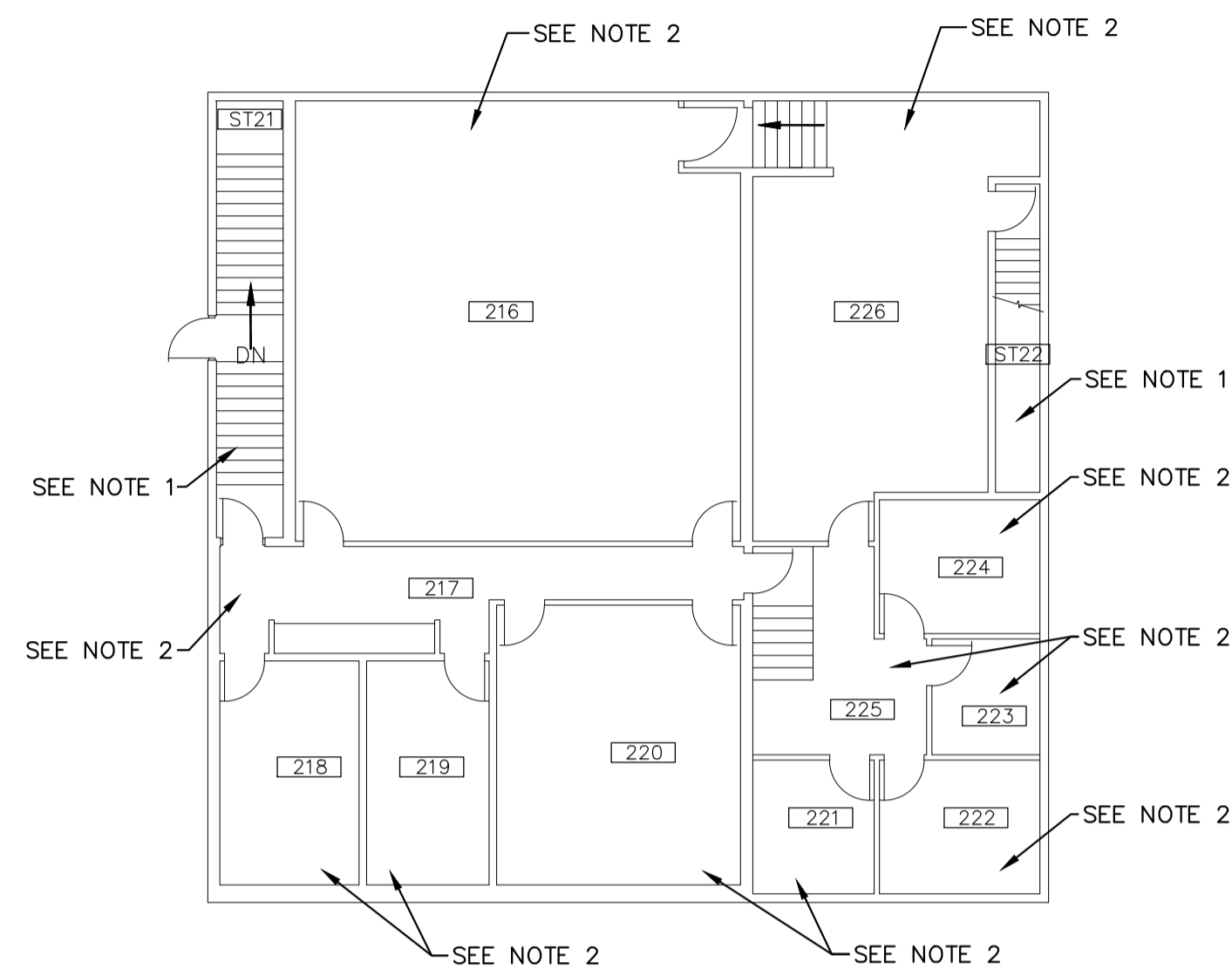
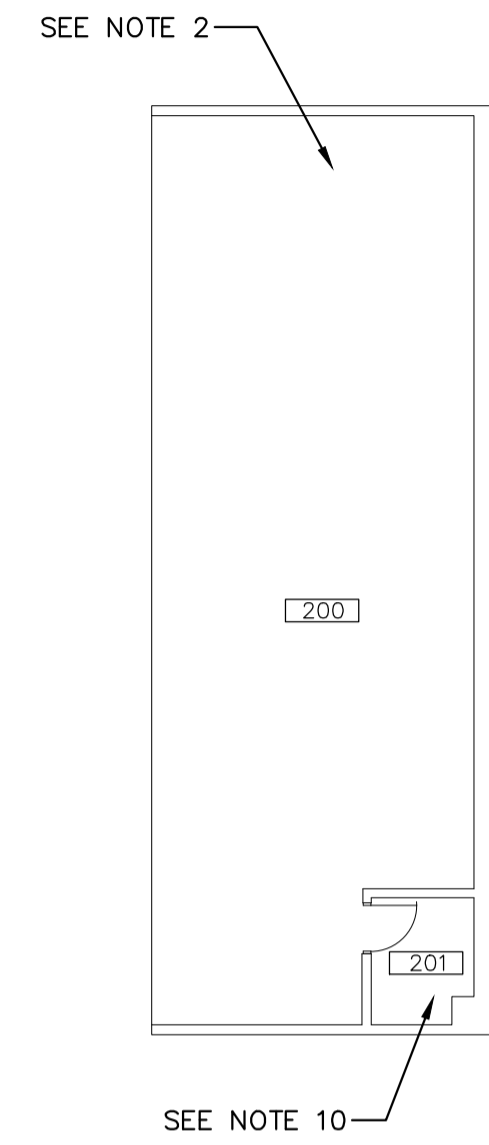


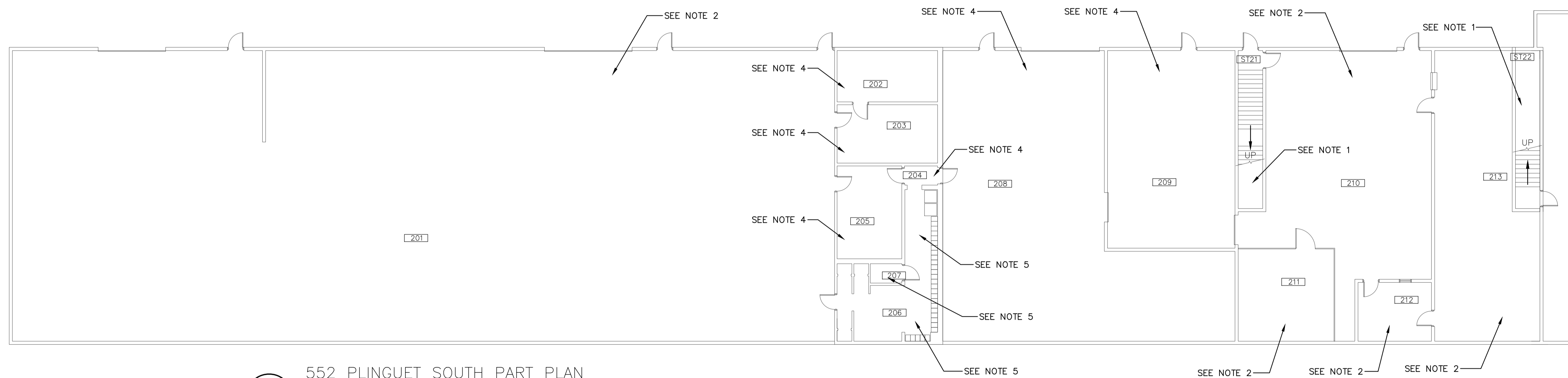
552 PLINGUET NORTH PART PLAN
1 : 150



552 PLINGUET SOUTH PLAN - SECOND FLOOR
1 : 150



552 PLINGUET SOUTH PLAN - MEZZANINE
1 : 150



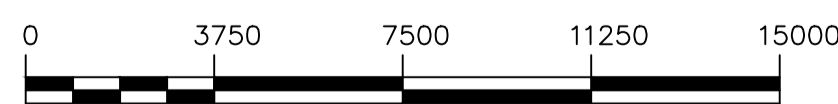
552 PLINGUET SOUTH PART PLAN MAIN FLOOR
1 : 150

ASBESTOS DRAWING NOTES

1. PRESUMED ACM IN DRYWALL COMPOUND ON THE WALLS AND CEILING.
2. PRESUMED VERMICULITE IN CONCRETE BLOCK WALLS.
3. CONFIRMED ACM IN TRANSITE CEILING. PRESUMED VERMICULITE IN CONCRETE BLOCK WALLS.
4. PRESUMED ACM IN DRYWALL COMPOUND ON THE WALLS. PRESUMED VERMICULITE IN CONCRETE BLOCK WALLS. PRESUMED ACM DRYWALL COMPOUND ON THE WALLS AND CEILING. PRESUMED VERMICULITE IN THE CONCRETE BLOCK WALLS.
5. PRESUMED ACM DRYWALL COMPOUND ON THE WALLS. PRESUMED VERMICULITE IN THE CONCRETE BLOCK WALLS. CONFIRMED TRANSITE IN THE CEILING ABOVE LAY-IN CEILING TILES.
6. PRESUMED ACM DRYWALL COMPOUND ON THE WALLS. PRESUMED VERMICULITE IN THE CONCRETE BLOCK WALLS. CONFIRMED TRANSITE IN THE CEILING ABOVE LAY-IN CEILING TILES.
7. PRESUMED ACM DRYWALL COMPOUND ON THE WALLS. CONFIRMED TRANSITE ON THE WALLS BELOW DRYWALL. PRESUMED VERMICULITE IN THE CONCRETE BLOCK WALLS. CONFIRMED TRANSITE IN THE CEILING ABOVE LAY-IN CEILING TILES.
8. PRESUMED ACM DRYWALL COMPOUND ON THE WALLS. PRESUMED VERMICULITE IN THE CONCRETE BLOCK WALLS. PRESUMED ACM IN PLASTER ON THE CEILING.
9. CONFIRMED TRANSITE ON THE WALLS BELOW DRYWALL. PRESUMED VERMICULITE IN THE CONCRETE BLOCK WALLS.
10. CONFIRMED VACM IN VINYL TILE AND ADHESIVE ON THE FLOOR. PRESUMED VERMICULITE IN THE CONCRETE BLOCK WALLS.

ASBESTOS GENERAL NOTES:

1. MASONRY WALLS ARE SUSPECTED TO CONTAIN VERMICULITE.
2. ROOF NEED TO BE TESTED PRIOR TO ANY DEMOLITION OF MODIFICATIONS.
3. REMOVAL OF CEILING SYSTEMS CONTAINING ASBESTOS BY OTHERS. INSTALLATION OF NEW CEILINGS BY THIS CONTRACT.
4. CUTTING/CORING OF WALL OR FLOOR PENETRATIONS BY OTHERS. LOCATES BY THIS CONTRACT.



METRIC
WHOLE NUMBERS INDICATE MILLIMETRES
DECIMALIZED NUMBERS INDICATE METRES

LOCATION APPROVED UNDERGROUND STRUCTURES SUPV. U/G STRUCTURES COMMITTEE DATE NOTE: LOCATION OF UNDERGROUND STRUCTURES AS SHOWN ARE BASED ON THE BEST INFORMATION AVAILABLE BUT NO GUARANTEE IS GIVEN THAT ALL EXISTING UTILITIES ARE SHOWN OR THAT THE GIVEN LOCATIONS ARE EXACT. CONFIRMATION OF EXISTENCE AND EXACT LOCATION OF ALL SERVICES MUST BE OBTAINED FROM THE INDIVIDUAL UTILITIES BEFORE PROCEEDING WITH CONSTRUCTION.		B.M. ELEV. CONSTRUCTION COMPLETION DATE: YYYY MM DD	DESIGNED BY JDB CHECKED BY JDB DRAWN BY JDB APPROVED BY SCALE: HORIZONTAL 1:150 VERTICAL DATE 2019 01 11	ENGINEER'S SEAL ORIGINAL SIGNED BY x.x. xxxxxxxx YY/MM/DD CONSULTANT DRAWING NUMBER	THE CITY OF WINNIPEG WATER AND WASTE DEPARTMENT ENGINEERING DIVISION 552 PLINGUET AVENUE FIRE PROTECTION UPGRADES BUILDING - 552 NORTH AND SOUTH ASBESTOS CONTAINING MATERIALS INVENTORY PLANS	SHEET 10 OF 18 CITY DRAWING NUMBER 1-0702N-M0009-001
NO. REVISIONS DATE BY		0 ISSUED FOR BID OP 1077-2018 2019 01 10 JDB	PLOT DATE: 2019 01 11	BID OPPORTUNITY: XXX-20XX CONTRACT NUMBER: X	FILE PATH: O:\PROJECTS\Water\W-819 Plinguet Fire Protection System\04-CA\01- Bid Documents\1077-2018\Drawings\	FILE NAME: 1-0702N-M0009-001.dwg