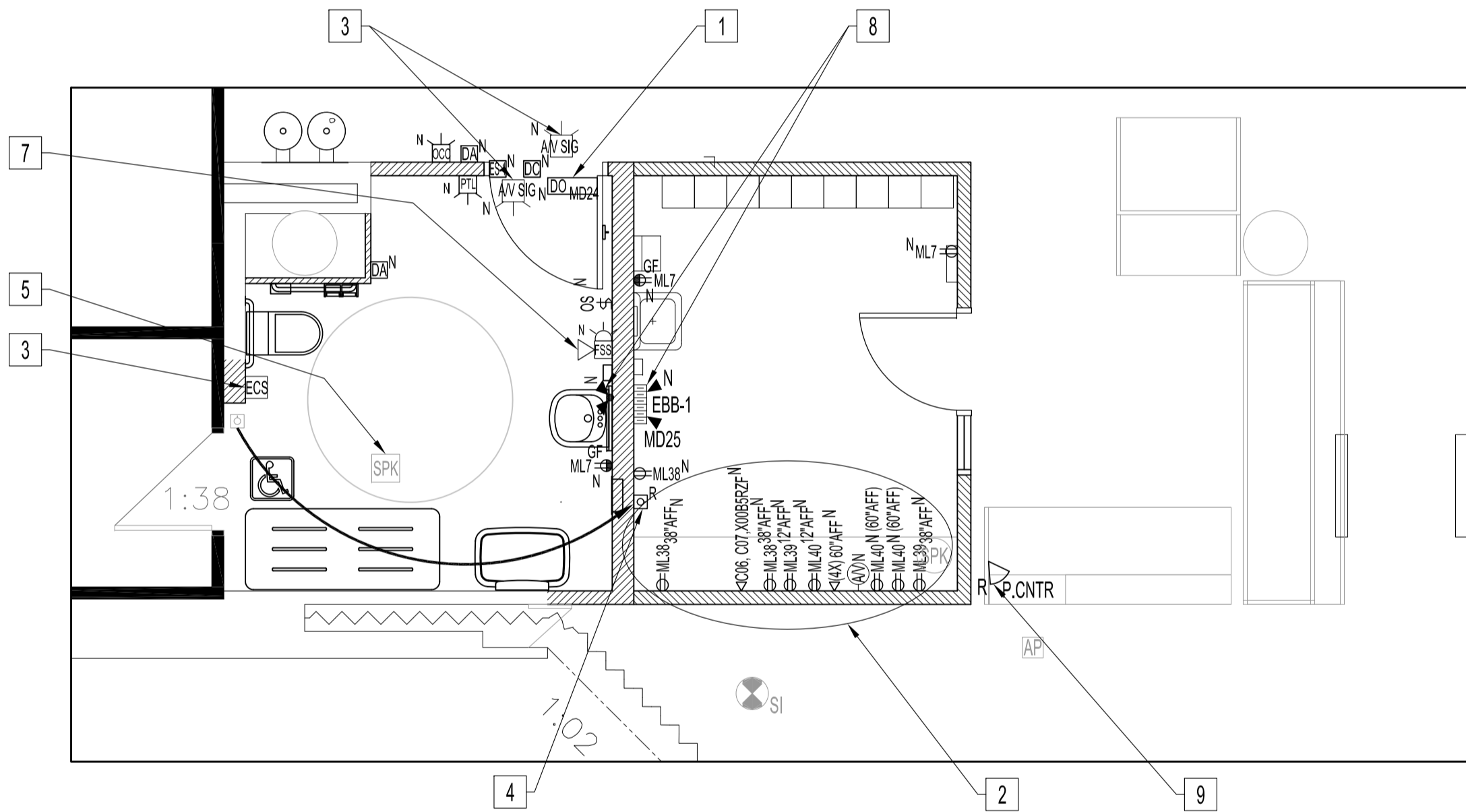
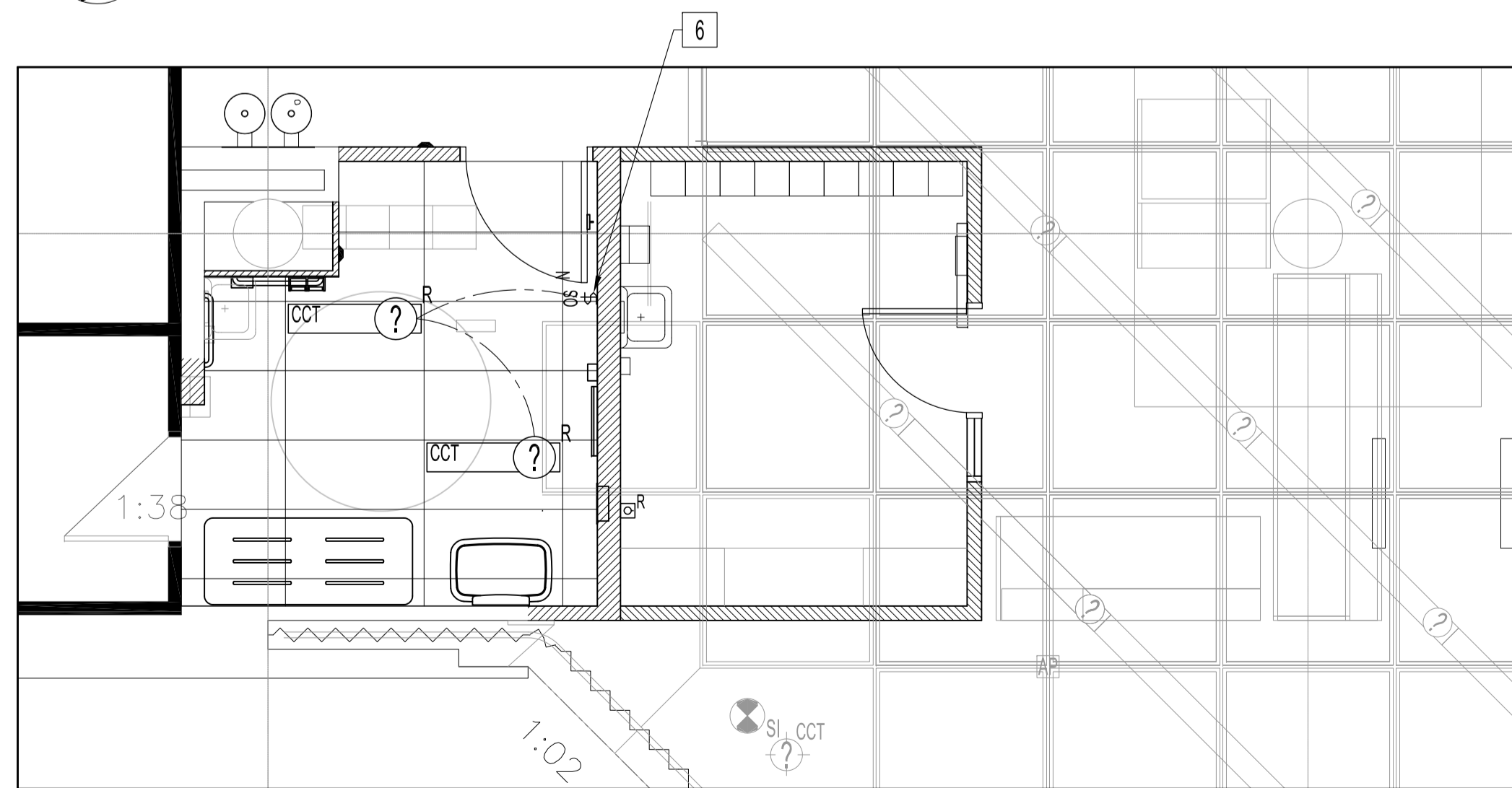


PARTIAL MAIN FLOOR AND REFLECTED CEILING PLAN - DEMOLITION
SCALE: 1/4"=1'-0"



PARTIAL MAIN FLOOR PLAN - RENOVATION
SCALE: 1/4"=1'-0"



PARTIAL MAIN FLOOR REFLECTED CEILING PLAN - RENOVATION
SCALE: 1/4"=1'-0"

POWER AND SYSTEMS DEMOLITION NOTES: "X"

ALSO SEE NOTES & SPECIFICATIONS. REFER TO APPLICABLE RENOVATION DRAWING FOR RELOCATED COMPONENTS.
ALL ABANDONED CABLES TO BE REMOVED FROM PLENUM SPACES AS REQUIRED BY LATEST CANADIAN ELECTRICAL CODE.
PLEASE DO NOT DISTURB OR DISCONNECT ANY WIRING & CABLING IN AREA OF WORK REQUIRED FOR OTHER AREAS.

- REMOVE ALL RECEPTACLES & WIRING BACK TO JUNCTION BOX, UNLESS OTHERWISE NOTED.
 - RELOCATE TELEPHONE LANDLINE AS PER RENOVATION PLAN.
- RELOCATE DATA PORTS AS PER RENOVATION PLAN WITHOUT SPLICING OR PATCH CABLES, OTHERWISE, PROVIDE NEW CAT6 CABLE HOME RUNS FROM EXISTING PATCH PANEL TO WALL PORTS
- RELOCATE TV & MOUNTS AS PER RENOVATION PLAN.
- RELOCATE SPEAKER VOLUME CONTROL FOR CHILD AREA & SKYWALK AS PER RENOVATION PLAN.
- RELOCATE CEILING LUMINAIRES AS PER RENOVATION PLAN.
- RELOCATE WALL MOUNTED HORN AS PER RENOVATION PLAN.
- REMOVE PANELS, IDENTIFY SOURCE & COIL UP CABLES INTO NEW UTR CEILING SPACE IF ACTIVE, OTHERWISE, IF ABANDON REMOVE BACK TO SOURCE.
- RELOCATE PROXIMITY SENSOR AS PER RENOVATION PLAN.

POWER, AND SYSTEMS RENOVATION NOTES: "X"

ALSO SEE NOTES & SPECIFICATIONS. ALL WIRING & CABLING SHALL BE CONCEALED IN DOOR JAMB &/OR IN WALL CAVITY FOR FINISH SPACE
ALL WIRING & CABLING IN CEILING SPACE SHALL BE PLENUM RATED AS PER LATEST CEC.

- WASHROOM POWER DOOR OPERATOR
 - PROVIDE NEW POWER DOOR OPERATOR (DO) WITH 120V, 15A CIRCUIT #1/2" RW90 IN EMT TO DESIGNATED 15A/1P CIRCUIT BREAKER. SETUP FOR "PUSH & GO".
 - SETUP (ES) FOR FAIL-SAFE.
 - PROVIDE CAMDEN DOOR CONTROL CX-33 ADVANCE LOGIC RELAY. PROVIDE WIRE & SETUP TO FULLY FUNCTION:
 - (DO) & (DA); SEE ARCH. DOOR SCHEDULE.
 - (OCC) "OCCUPIED" RED INDICATOR; CAMDEN CM-AF500 RED (OCCUPIED).
 - (ES); VON DUPRIN 6211FS WITH STRIKE SURGE PROTECTOR.
 - (DC); GE 1078W
 - (PTL); CAMDEN CM-AF550R WITH "LOCK" INDICATOR.
 - POWER SUPPLY; SECURITRON BPS-24-2. REQUIRE ONLY IF (DO) DOES NOT PROVIDE AUXILIARY 24VDC POWER SUPPLY.
 - WALL MOUNT:
 - (OCC) "OCCUPIED" RED INDICATOR; 42" AFF & WITHIN 6" FROM EXTERIOR DOOR FRAME - LATCH SIDE.
 - (DC); TOP OF DOOR FRAME 6" FROM LATCH SIDE.
 - (PTL); SEE ARCH. RENO DRAWING
 - SEQUENCE OF OPERATION:
 - ENTERING UTR
 - 1.5.1.1. (ES) NORMALLY UNLOCKED & OUTSIDE (DA) ENABLED.
 - 1.5.1.2. PUSH DOOR OR PUSH OUTSIDE (DA) TO ENABLE (DO) TO OPEN DOOR.
 - 1.5.1.3. TO LOCK DOOR FROM INSIDE UTR, PUSH (PTL) TO ENABLE (ES) TO LOCK POSITION & ILLUMINATE (PTL) & "OCCUPIED" RED INDICATOR OUTSIDE UTR. OUTSIDE (DA) WILL BE DISABLED.
 - EXITING UTR
 - 1.5.2.1. TO EXIT MANUALLY, TURN THE INSIDE LEVER & PULL TO OPEN DOOR WILL ALSO REST THE SYSTEM.
 - 1.5.2.2. TO EXIT WITH (DO), PUSH INSIDE (DA) TO RELEASE (ES) & POWER (DO) TO OPEN & REST THE SYSTEM.
 - 1.5.2.3. (DC) ACTS AS DOOR POSITION SWITCH.
- PROVIDE DUPLEX RECEPTACLES TO CIRCUITS SHOWN. MOUNT TO HEIGHT SHOWN.
 - 60" AFF FOR RECEPTACLES & DATA (4-PORT FACEPLATE) MAY VARY ON MONITOR MOUNT LOCATIONS SUPPLIED BY OTHERS.
 - DATA PORT SHOWN (4X) ACCOMMODATES (2) EXISTING & (2) FUTURE DATA PORTS USING A 4-PORT FACEPLATE.
 - PROVIDE 2-GANG RECESSED LOW-VOLTAGE CABLE WALL PLATE & MOUNTING BRACKET, WHITE, FOR AV CABLE PASS THRU. MOUNT HEIGHT DETERMINED BY MONITOR MOUNT LOCATIONS.
- EMERGENCY CALL SYSTEM (ECS)
 - PROVIDE (ECS), EDWARDS CAT. No. 65380NT-05, KIT COMPONENTS INCLUDES: 6536-05 AUDIOVISUAL SIGNAL (TWO PROVIDED), SS-2001E EMERGENCY PUSH BUTTON, SUB-10272-R SPACER, SIGN-EMERG-PUSH EMERGENCY SIGN & 592 TRANSFORMER (120/24VDC TRANSFORMER), CALL IS LOCAL.
 - MOUNT (AV SIG) AUDIBLE/STROBE INSIDE & OUTSIDE UTR - CENTERED 6" ABOVE WASHROOM DOOR.
 - MOUNT EMERGENCY PUSH BUTTON 42" AFF TO CENTERLINE. MOUNT EMERGENCY SIGN ABOVE EMERGENCY PUSH BUTTON.
- RELOCATED SPEAKER VOLUME MOUNTED 42" AFF. REWIRE, ADJUST & TEST. CONFIRM REQUIRED SOUND LEVEL IS ADEQUATE AT SPEAKERS IN CHILD AREA & SYKWALK.
- RE-MOUNT, REWIRE & TEST SPEAKER TO NEW ACT WITH REQUIRE BRACKET.

ABBREVIATIONS	
	DESCRIPTION
A	AMPERE, AMPACITY
AC	ABOVE COUNTER
ACT	ACOUSTIC CEILING TILE
AFF	ABOVE FINISH FLOOR
CCT	CIRCUIT, CCT= C-PANEL "B"; CT= CIRCUIT "1" (B1)
CLNG	CEILING
D	DEMOLITION, REMOVE BACK TO SOURCE
DA	DOOR ACTUATOR
DED	DEDICATED CIRCUIT
DSW	DISCONNECT SWITCH
DWG	DRAWING
E	EXISTING OR "NO DESIGNATION"
ES	ELECTRIC STRIKE
GFCI	GROUND FAULT CIRCUIT INTERRUPTER
HZ	HERTZ
JB	JUNCTION BOX
N	NEW
N.I.C.	NOT IN CONTRACT
NTS	NOT TO SCALE
O/C	ON CENTER
OS	OCCUPANCY SENSOR
P.CNTR	PEOPLE COUNTER SENSOR
PNL	PANEL
R	RELOCATED LOCATION
RECP.	RECEPTACLE
SW	SWITCH
TBD	TO BE DETERMINED
TYP.	TYPICAL

ELECTRICAL LEGEND	
TYPE	DESCRIPTION
⊖	DUPLEX RECEPTACLE
⊖ ^{AFF}	HEIGHT IN INCHES ABOVE FINISH FLOOR TO CENTERLINE OF DEVICE
⊖ ₂	2-GANG DUPLEX RECEPTACLE
⊖ ^{GF}	GROUND FAULT CIRCUIT INTERRUPTER DUPLEX RECEPTACLE
⊖	LIGHT SWITCH, SINGLE POLE
DA	36" DOOR ACTUATOR
ES	ELECTRIC STRIKE
DO-1	AUTOMATIC DOOR OPERATOR
DC	DOOR CONTACT - FLUSH MOUNT, GE MODEL # 1076CW
PTL	PUSH-TO LOCK WITH "LOCK" INDICATOR
OCC	"OCCUPIED" RED INDICATOR
AV SIG	AUDIBLE/STROBE SIGNAL FOR ECS
JB	JUNCTION BOX
FA	FIRE ALARM MANUAL PULL STATION
FS	FIRE ALARM STROBE SIREN
HD	HEAT DETECTOR, CEILING RECESSED
⊖	PUBLIC ADDRESS MICROPHONE INPUT JACK
SPK	SPEAKER
SV	SPEAKER VOLUME CONTROLLER
▷	DATA PORT
◀	VOICE (PHONE) PORT; CENTREX LAND LINE
◁ ^{P.CNTR}	PEOPLE COUNTER PROXIMITY SENSOR
HS	HORN - SECURITY
MD	MOTION DETECTOR - SECURITY
PNL	ELECTRICAL PANEL
NA	NETWORK ACCESS POINT
⊖	THERMOSTAT

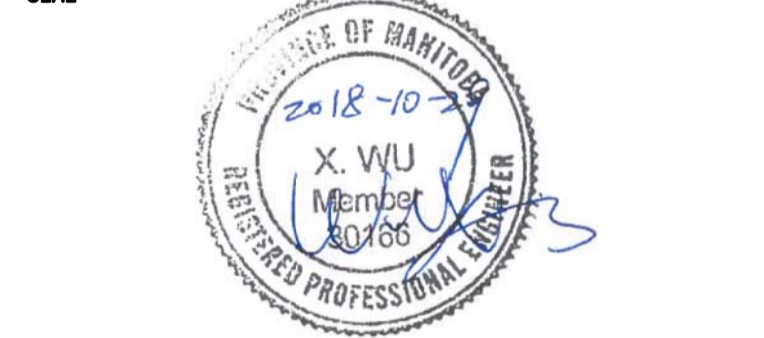
- REINSTALL EXISTING 1X4 RECESSED FLUORESCENT TO NEW ACT LOCATION & REWIRE TO EXISTING LIGHTING CIRCUIT WITH NEW OCCUPANCY LIGHT SWITCH, ACUTY SENSOR SWITCH SERIES WSX-347-WH OR APPROVED EQUAL.
- PROVIDE FIRE STROBE/SIREN TO CONNECT TO EXISTING SYSTEM. TYPE & INSTALLATION TO MATCH EXISTING. MOUNT 90" AFF.
- PROVIDE A DEDICATED 15 AMP, 120V/1PH. BRANCH CIRCUIT WITH #10/2 RW-90 WIRES IN 3/4" EMT FOR EMERGENCY BATTERY BANK 2-HEAD UNIT WITH NEW INTEGRAL ZONE SENSING CONTROL PANEL/BATTERY/2-LAMP UNIT (EBB-1) TO INTERCONNECT WITH 2-HEAD REMOTE EMERGENCY LAMPS. WIRE TO MONITOR LIGHTING CIRCUIT ABOVE NEW SECURITY AREA.
- REINSTALL & RECONNECT PEOPLE COUNTER PROXIMITY SENSOR TO COUNTER TOP ALONG WITH ASSOCIATED COMPONENTS & TEST. ALIGN WITH REFLECTOR ACROSS AREA (NEAR PAY PHONE).

LIGHTING SCHEDULE					
TAG	DESCRIPTION	MANUFACTURER	CATALOG No.	VOLTS	PANEL-CIRCUIT
EBB-1	INTEGRAL ZONE SENSING CONTROL PANEL/BATTERY UNIT W/ 2-LAMP, SHELF	AMLITE	EBST-2NSC-12V-200-20MB-LED-120-AT-ZTS-ZPL	120V - 12V	MD25
	DOUBLE REMOTE LAMP	AMLITE	RIMB-2-12-3.7L-WHT	12V	
	EXISTING 1x4 RECESSED FLUORESCENT				
OS	OCCUPANCY SENSOR SWITCH	ACUTY	WSX-347-WH	347VAC	

NOTES:
THESE DRAWINGS SHALL NOT BE SCALED. CONSULT WITH CLIENT AND DESIGNER ON ANY CONCERNS.
ALSO REFER TO ARCHITECTURAL, MECHANICAL & ELECTRICAL DRAWINGS & SPECIFICATIONS.
SUBMISSION OF SITE MARK-UPS, AS-BUILTS, OPERATING & MAINTENANCE MANUALS AND OTHER SUPPORTING DOCUMENTS TO CLIENT ARE MANDATORY AT THE COMPLETION OF THIS PROJECT
THE CONTRACTOR SHALL VISIT THE SITE AND ENSURE ALL DIMENSIONS, DATUM, AND DETAILED INFORMATION SHOWN ARE CORRECT.
THE CONTRACTOR IS TO REVIEW AND COORDINATE ALL ARCHITECTURAL, MECHANICAL AND ELECTRICAL DRAWINGS FOR ADDITIONAL OPENINGS THROUGH FLOORS, WALLS, AND CEILINGS FOR DUCTS, PIPES & ELECTRICAL RISERS AND ALL OPENINGS NOT SHOWN ON DRAWINGS.
ALL OPENINGS THROUGH FIRE ASSEMBLIES INCLUDING FLOORS AND CEILINGS ARE TO BE FIRE STOPPED AND SEALED WITH ULC APPROVED FIRE STOPPING TO MAINTAIN THE INTEGRITY OF THE FIRE SEPARATION, AND PROVIDE A SMOKE-TIGHT BARRIER.
ALL PRODUCTS AND MATERIALS TO BE USED AND INSTALLED SHALL CONFORM WITH MANUFACTURER'S SPECIFICATIONS, APPLICABLE CODES AND AUTHORITY HAVING JURISDICTION.
THE CONTRACTOR SHALL BE RESPONSIBLE TO PATCH AND MAKE GOOD ALL EXISTING CONSTRUCTION AFFECTED BY THE REMOVAL OF ALL ITEMS FORMING PART OF THE RENOVATION WORK.
IN AREA OF WORK, PROVIDE DYNALABELS ON NEW & EXISTING SWITCHES, PORTS & RECEPTACLES. PANEL SCHEDULE SHALL BE RETYPED TO REFLECT AS-BUILT CONDITIONS & INSERTED TO INSIDE OF ASSOCIATED PANEL DOOR SLEEVE PROTECTOR.
ALL ABANDONED (KNOWN & UNKNOWN) ELECTRICAL FIXTURES, COMPONENTS, RECEPTACLES & DATA CABLES SHALL BE REMOVED BACK TO SOURCE & TERMINATED AS PER APPLICABLE CODES.
RECONNECT & TEST ALL FIRE PREVENTION EQUIPMENT.
WARNING:
ASBESTOS MAYBE PRESENT BEHIND WALLS, CEILING SPACE & FLOORS. IF ASBESTOS & ANY HAZARDOUS MATERIAL IS FOUND, STOP WORK IMMEDIATELY & CONTACT CITY OF WINNIPEG, CENTRAL CONTROLS, PH: 204-986-2351.

ELECTRICAL	
SHEET No:	SHEET TITLE
E1	PARTIAL MAIN FLOOR PLAN; DEMOLITION AND RENOVATION; POWER AND SYSTEMS
E2	ELECTRICAL SPECIFICATIONS; POWER & SYSTEMS

No.	REVISION/DESCRIPTION	BY	DATE
0	ISSUED FOR CONSTRUCTION	DTA	2018.10.29



DRAWN	DTA	CHECKED	DESIGNED	DTA	APPROVED
DATE	2018.10.15	USER			

THE CITY OF WINNIPEG
PLANNING, PROPERTY AND DEVELOPMENT DEPARTMENT
MUNICIPAL ACCOMMODATIONS DIVISION
3-65 GARRY STREET, R3C 4K4

PROJECT
MILLENNIUM LIBRARY
MAIN FLOOR
UNIVERSAL TOILET ROOM DEVELOPMENT
251 DONALD STREET

SHEET TITLE
PARTIAL MAIN FLOOR PLAN
DEMOLITION AND RENOVATION
POWER AND SYSTEMS

SCALE	PROJECT No:	SHEET No:
AS SHOWN	2018-101	E1