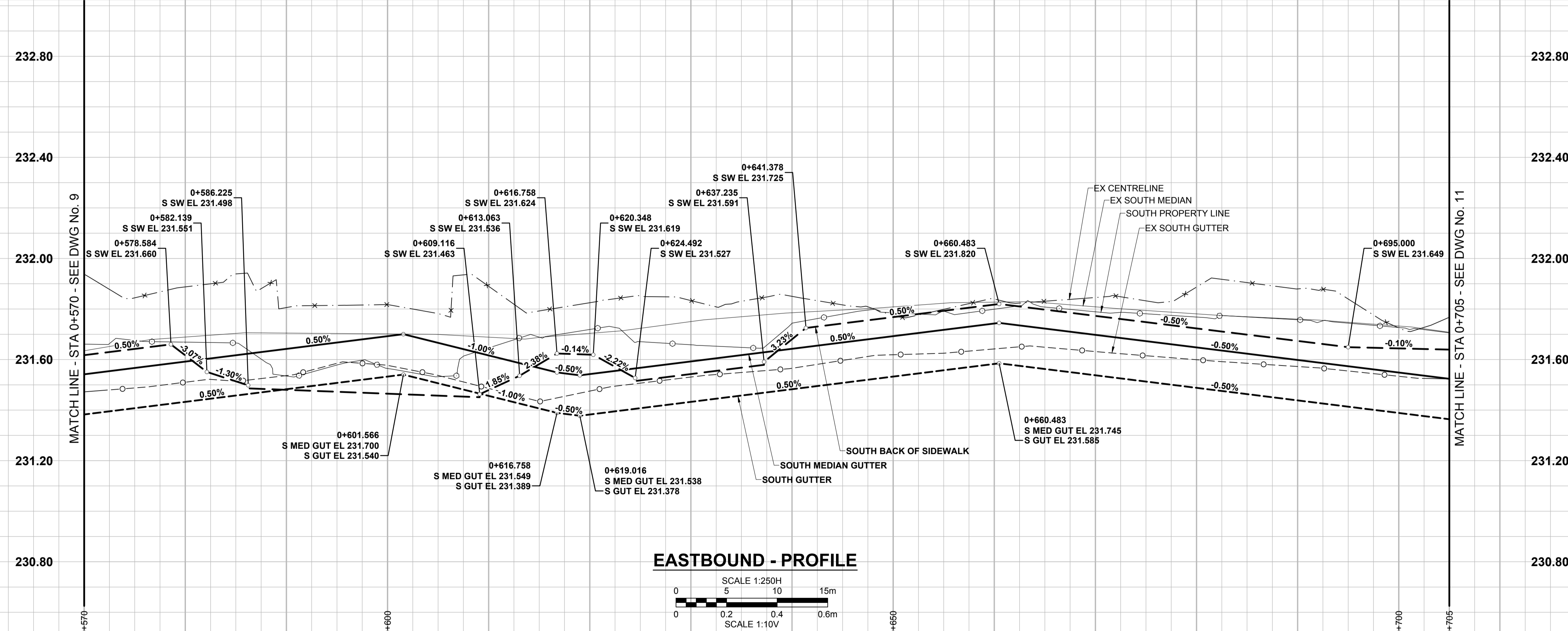
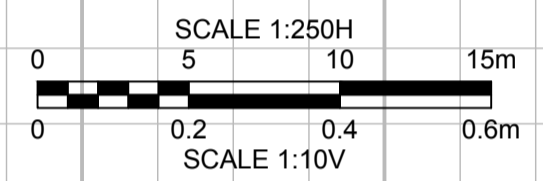
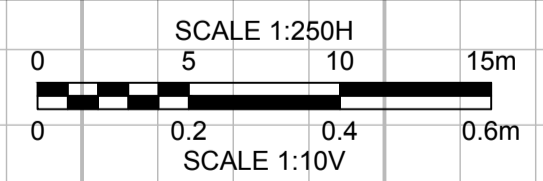


WESTBOUND - PROFILE



EASTBOUND - PROFILE



NOTE: SEE SHEET 6 FOR PAVING & GRADING

TENDER No. 1017-2018



LOCATION APPROVED UNDERGROUND STRUCTURES

SUPR. U/G STRUCTURES COMMITTEE DATE

NOTE: LOCATION OF UNDERGROUND STRUCTURES AS SHOWN ARE BASED ON THE BEST INFORMATION AVAILABLE BUT NO GUARANTEE IS GIVEN THAT ALL EXISTING UTILITIES ARE SHOWN OR THAT THE GIVEN LOCATIONS ARE EXACT. CONFIRMATION OF EXISTENCE AND EXACT LOCATION OF ALL SERVICES MUST BE OBTAINED FROM THE INDIVIDUAL UTILITIES BEFORE PROCEEDING WITH CONSTRUCTION.

BM	15-005	N.E. Cor. Inkster Blvd. & Sheppard St. Tbt. in W. Conc.
ELEV	232.043 m	Foundation No. 1493 Inkster Blvd., 3.5 m N. & 0.3 m below Conc. block wall of S.W. Cor. of Bldg. (Near gas service to Bldg.)
DESIGNED BY	GFC	CHECKED BY WRJ
DRAWN BY	KMB	APPROVED BY BWB
C	ISSUED FOR TENDER	19/02/13 GFC
B	RE-ISSUED FOR CLIENT REVIEW	18/12/17 GFC
A	ISSUED FOR CLIENT REVIEW	18/11/15 GFC
No.	REVISIONS	YY/MM/DD BY



DESIGNED BY	GFC	CHECKED BY	WRJ
DRAWN BY	KMB	APPROVED BY	BWB
RELEASED FOR CONSTRUCTION		DATE	
HOR SCALE	1:250	DATE	
VERT SCALE	1:10	DATE	

PROFESSIONAL'S SEAL

PRELIMINARY DRAWING

NOT TO BE USED FOR CONSTRUCTION

CONSULTANT FILE NAME
1801558-Inkster-PR-03.dwg

THE CITY OF WINNIPEG PUBLIC WORKS DEPARTMENT ENGINEERING DIVISION

2019 REGIONAL STREET RENEWAL PROGRAM INKSTER BOULEVARD RECONSTRUCTION MILNER STREET TO FIFE STREET

PAVING & GRADING - PROFILE
STA 0+570 TO STA 0+705

CITY DRAWING NUMBER: N/A
SHEET 10 OF 15
DRAWING NUMBER: 10

METRIC
WHOLE NUMBERS INDICATE MILLIMETRES
DECIMALIZED NUMBERS INDICATE METRES