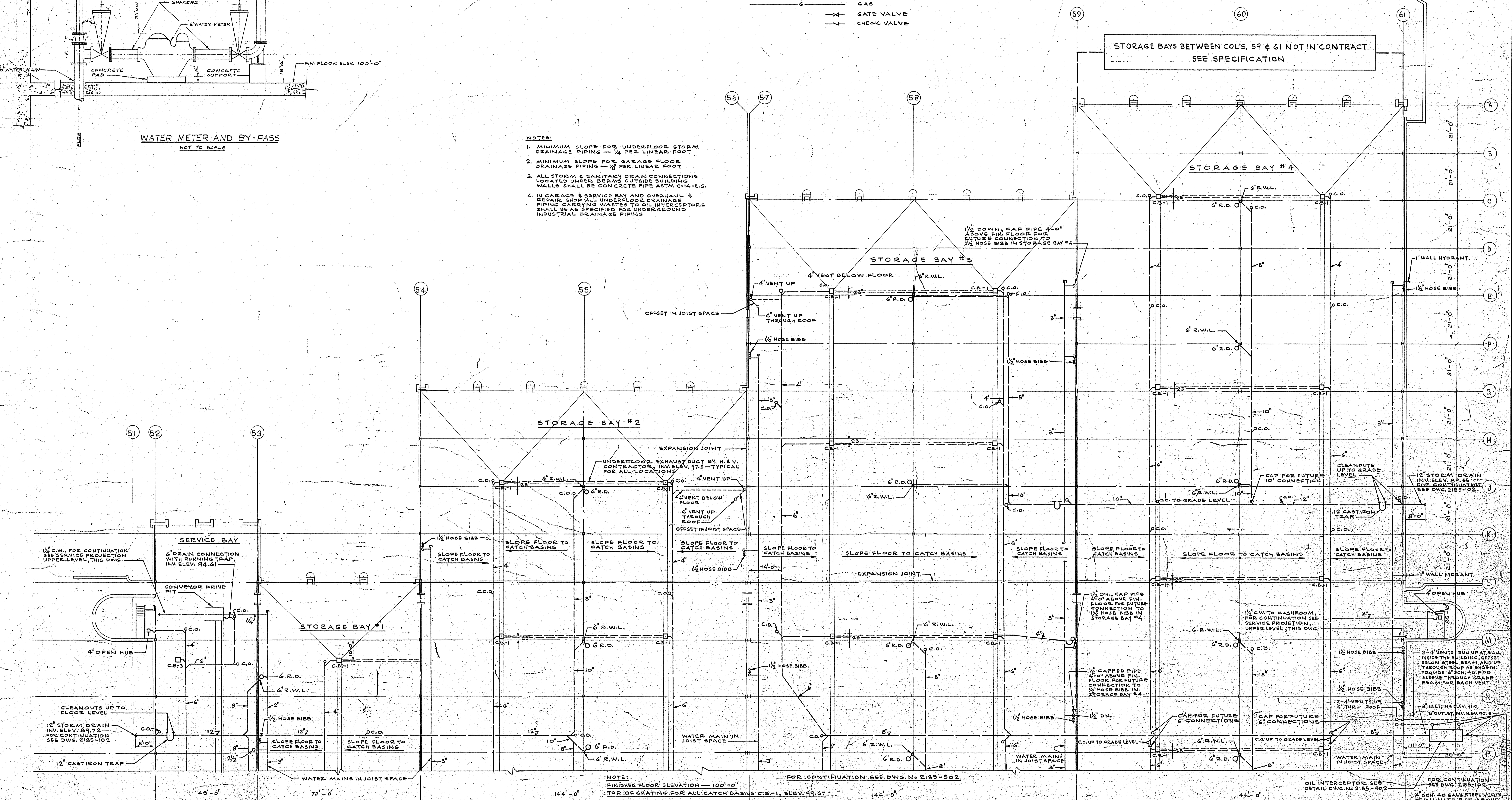


WATER METER AND BY-PASS
NOT TO SCALE

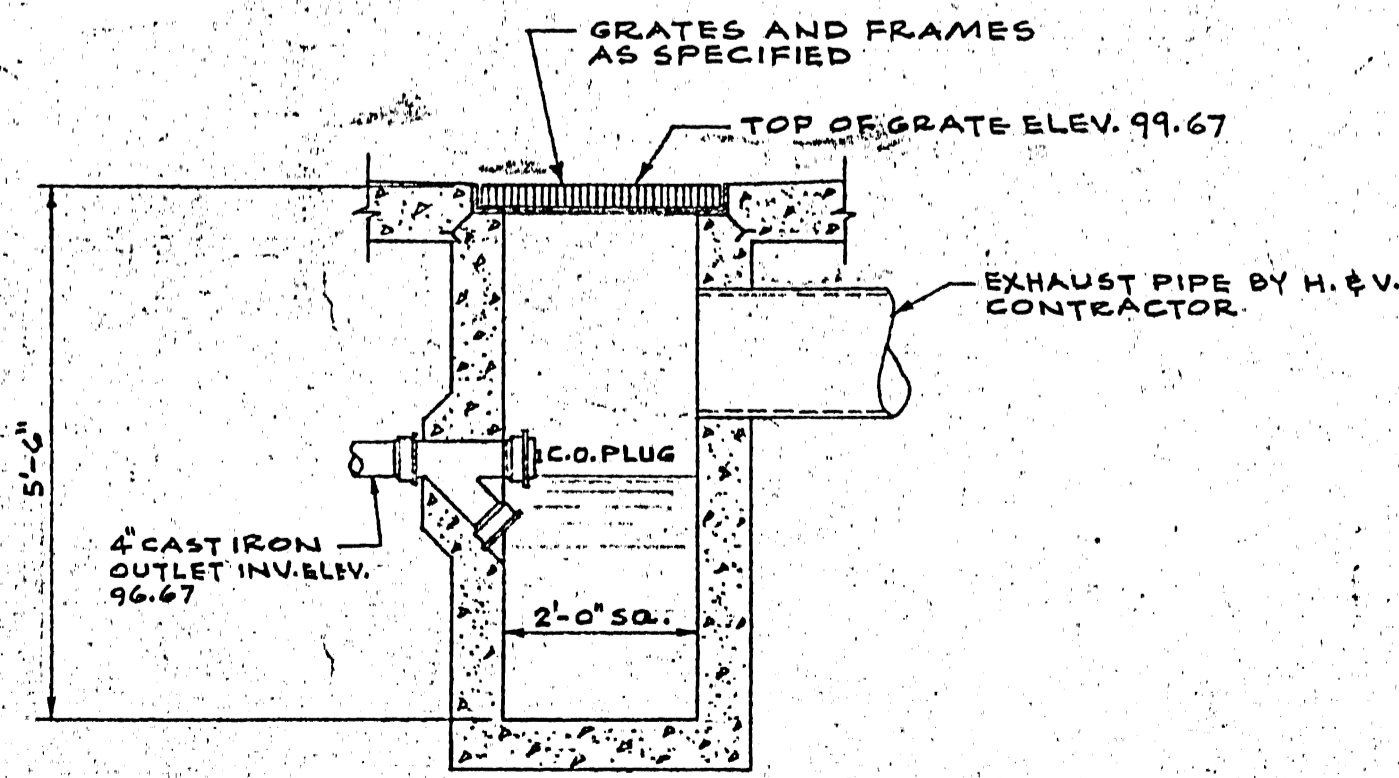
LEGEND

	SOIL, WASTE OR LEADER ABOVE GRADE
	SOIL, WASTE OR LEADER BELOW GRADE
	COLD WATER
	HOT WATER
	HOT WATER RECIRCULATING
	VENT
	GAS
	GATE VALVE
	CHECK VALVE

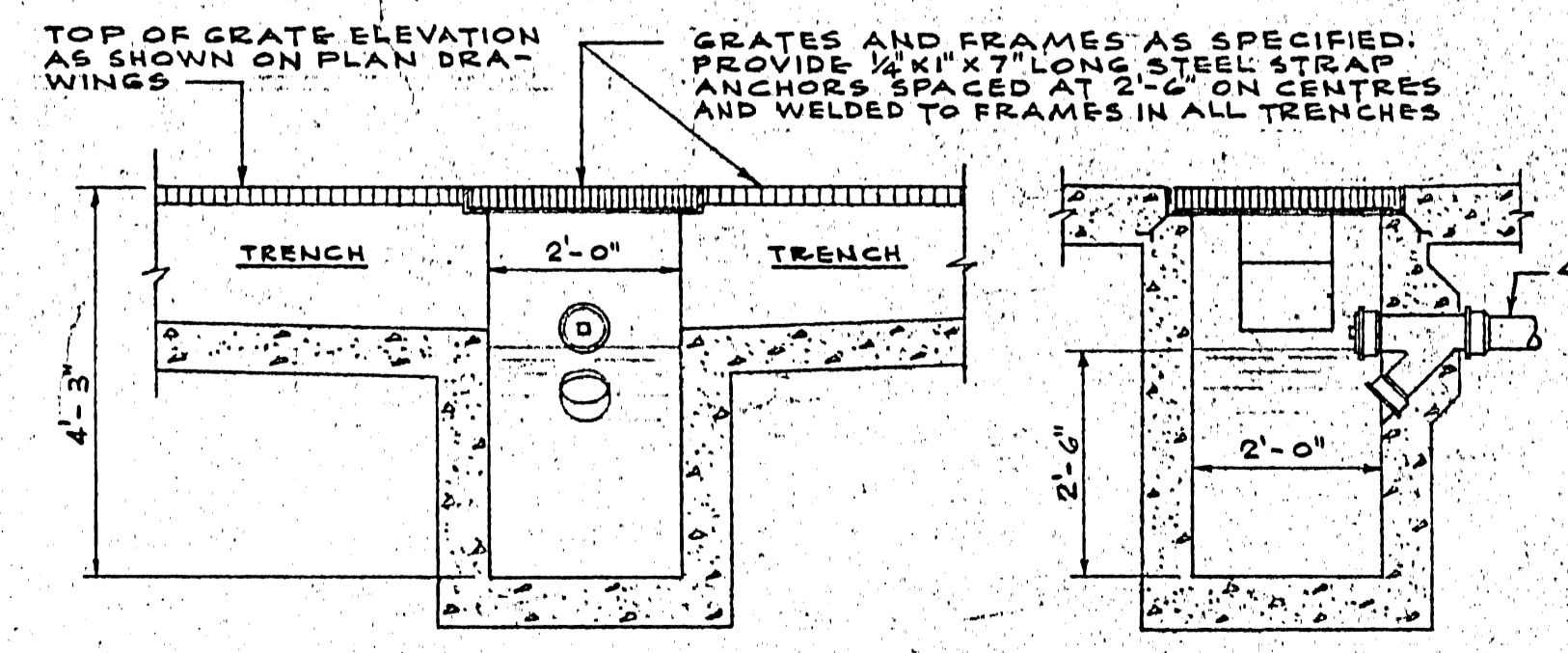
- NOTES:**
1. MINIMUM SLOPE FOR UNDERFLOOR STORM DRAINAGE PIPING — 1/4 PER LINEAR FOOT
 2. MINIMUM SLOPE FOR GARAGE FLOOR DRAINAGE PIPING — 1/8 PER LINEAR FOOT
 3. ALL STORM & SANITARY DRAIN CONNECTIONS LOCATED UNDER BERMS OUTSIDE BUILDING WALLS SHALL BE CONCRETE PIPE ASTM C141-R.S.
 4. IN GARAGE & SERVICE BAY AND OUBORAU & REPAIR SHOP ALL UNDERFLOOR DRAINAGE PIPING CARRYING WASTES TO OIL INTERCEPTOR SHALL BE AS SPECIFIED FOR UNDERGROUND INDUSTRIAL DRAINAGE PIPING



GARAGE PLAN
SCALE 1/8" = 1'-0"

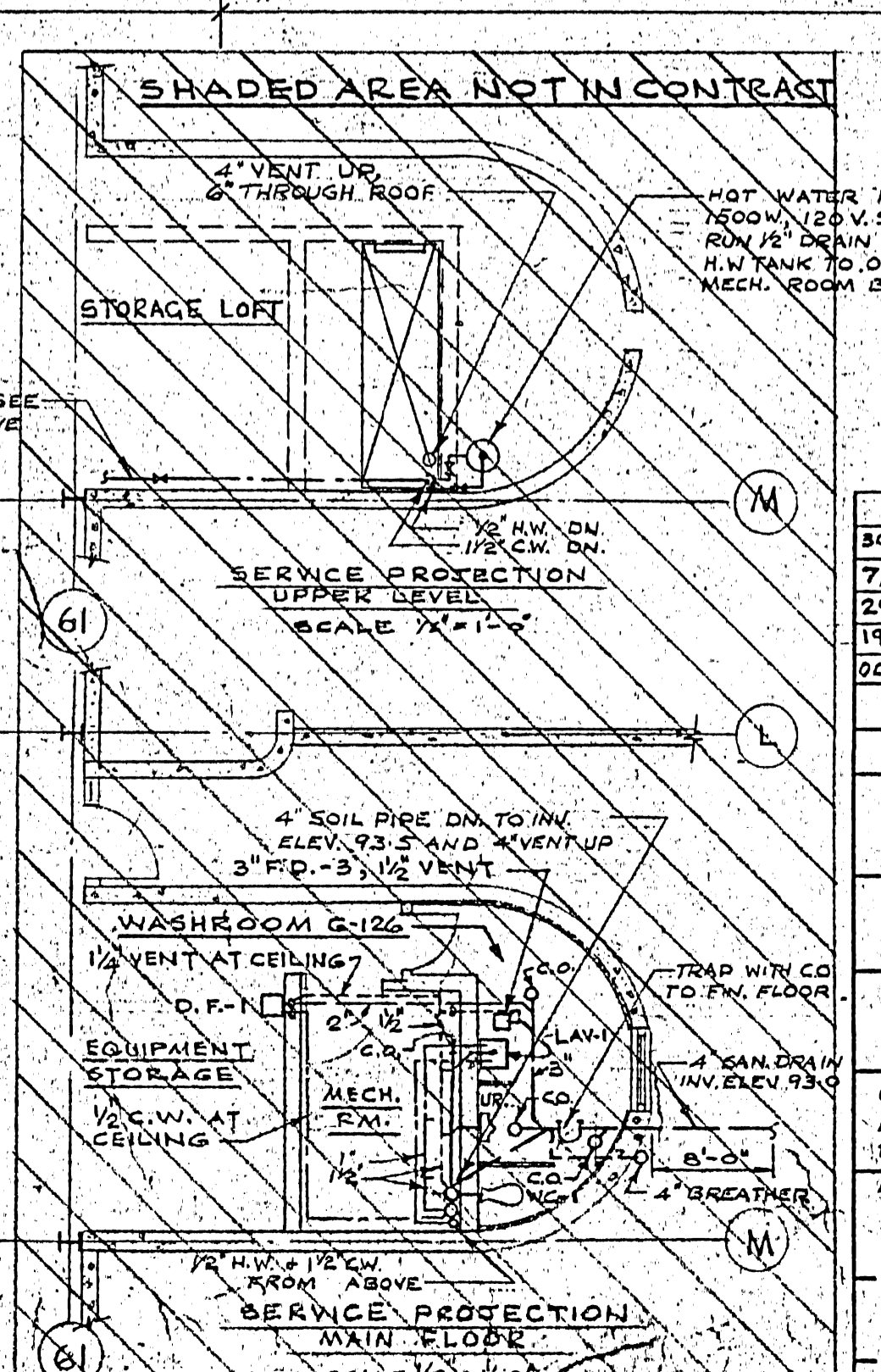
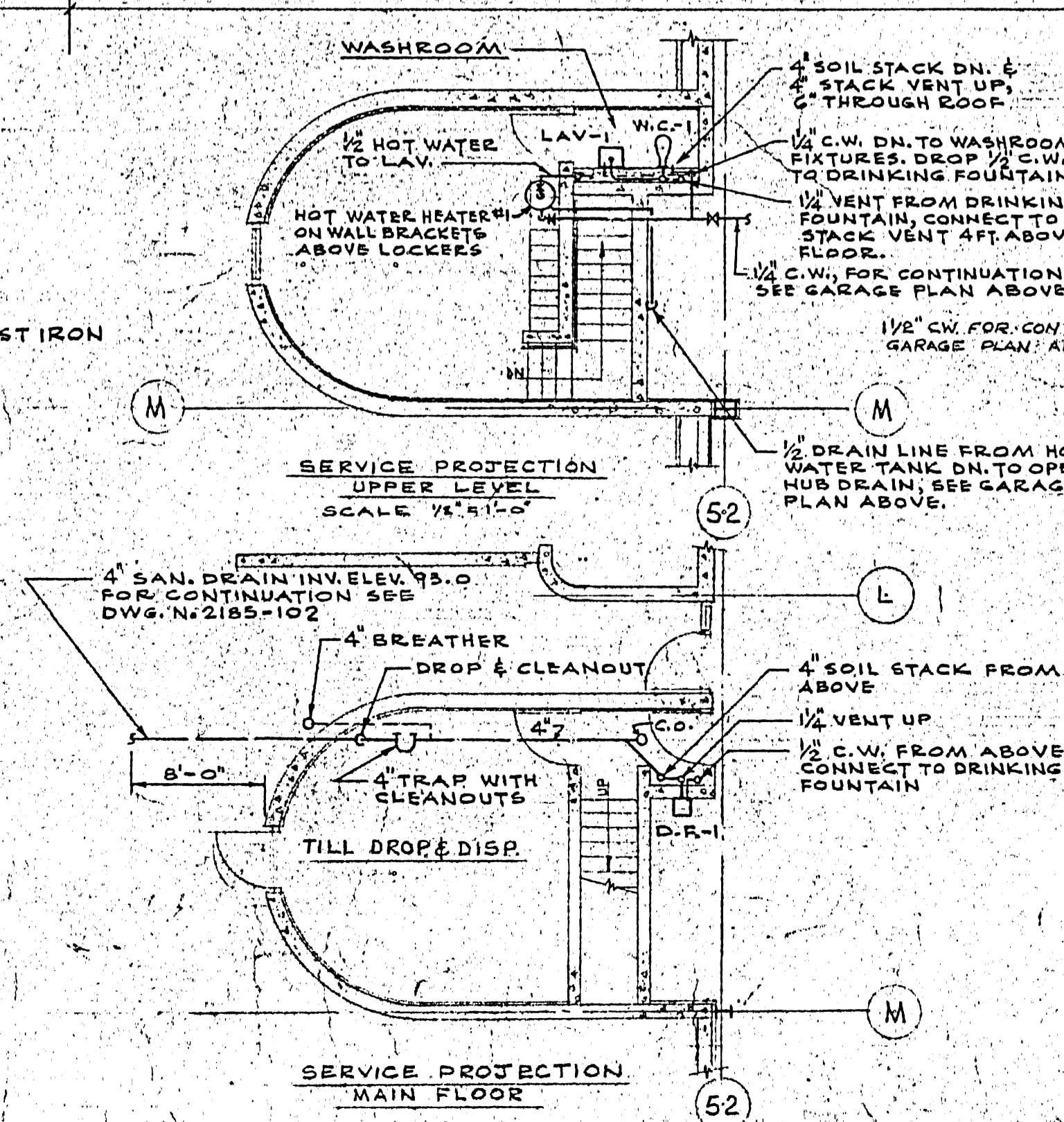


TYPICAL SECTION FOR CATCH BASIN C.B.-1
SCALE 1/2" = 1'-0"



TYPICAL SECTIONS FOR CATCH BASIN C.B.-2
SCALE 1/2" = 1'-0"

NOTE:
CATCH BASIN C.B.-3 IS SIMILAR BUT WITHOUT TRENCH CONNECTION



2185-401

LICENSED TO PRACTICE
IN THE
PROVINCE OF MANITOBA
My License Expires 10 Jan. 1968

J. T. THORPE
PROFESSIONAL ENGINEER

DATE	REVISION	DESCRIPTION	DRAWN
80-7-67	2	AS BUILT	J.L.
7/2/68	4	REVISED PER PROPOSED NOTICE OF CHANGE #77	J.L.
2/2/69	3	FOR CONSTRUCTION	
1/1/68	2	FOR TENDER	
10/2/67	1	FOR APPROVAL	

ISSUE OR REVISION

METROPOLITAN CORPORATION OF GREATER WINNIPEG
STREETS AND TRANSIT DIVISION

TRANSIT STORAGE AND SHOP FACILITIES
GARAGE & SERVICE BAY

PLUMBING & DRAINAGE - PLAN & DETAILS

CONSULTING PROFESSIONAL ENGINEERS
A. D. MARGISON AND ASSOCIATES LIMITED
105 BELLE STREET, DON MILLS, ONTARIO

ARCHITECTS
William Ross & Associates
10 DONALD STREET, WINNIPEG, MANITOBA

APPROVED: *J. T. Thorpe* DATE: AUGUST '67
CHECKED: J.T.T. AS SHOWN
FILE NO.: 2185-401
SHEET NO.: MECHANICAL

421 OSBORNE ST.
WINNIPEG, MANITOBA
PROJECT NO. 2185-401
SHEET NO. 6
GARAGE & SERVICE BAY - PLUMBING & DRAINAGE - PLAN & DETAILS