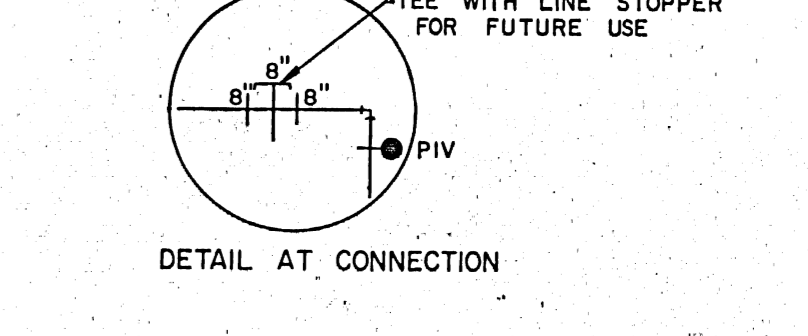
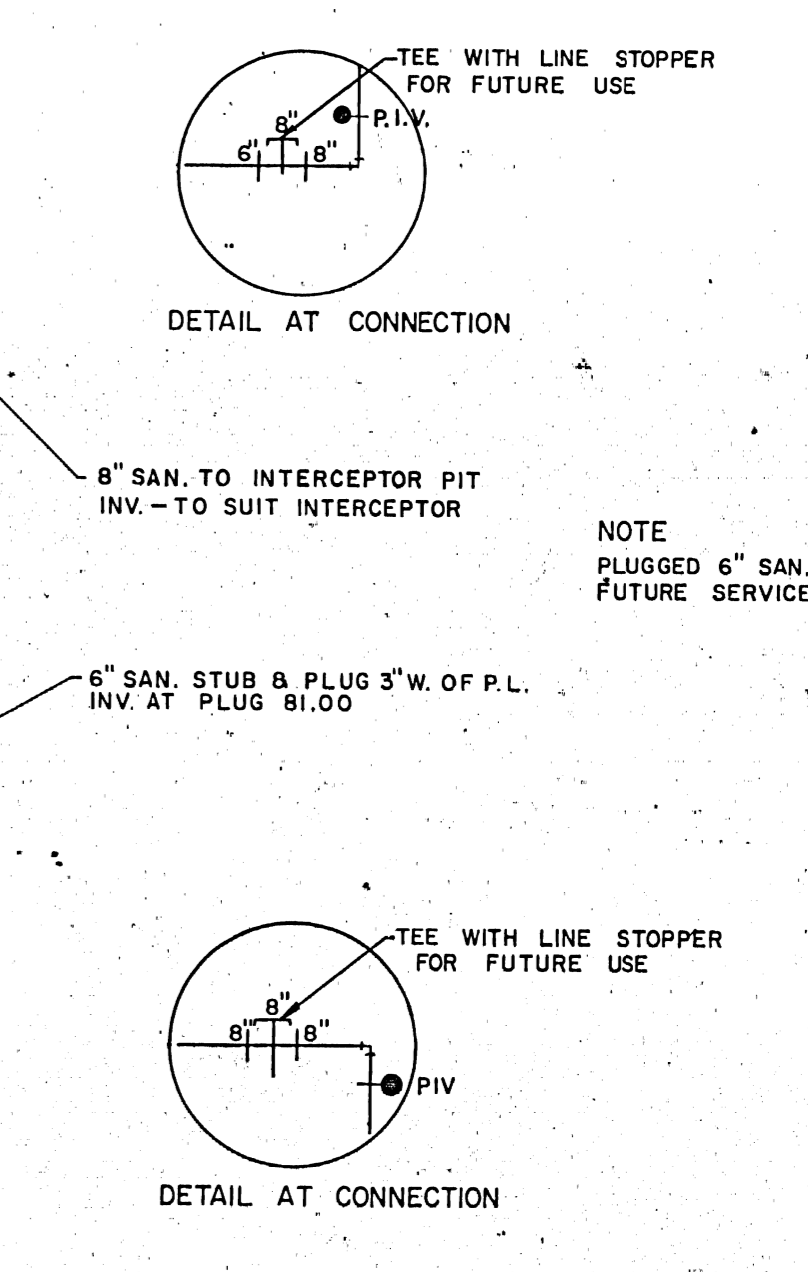
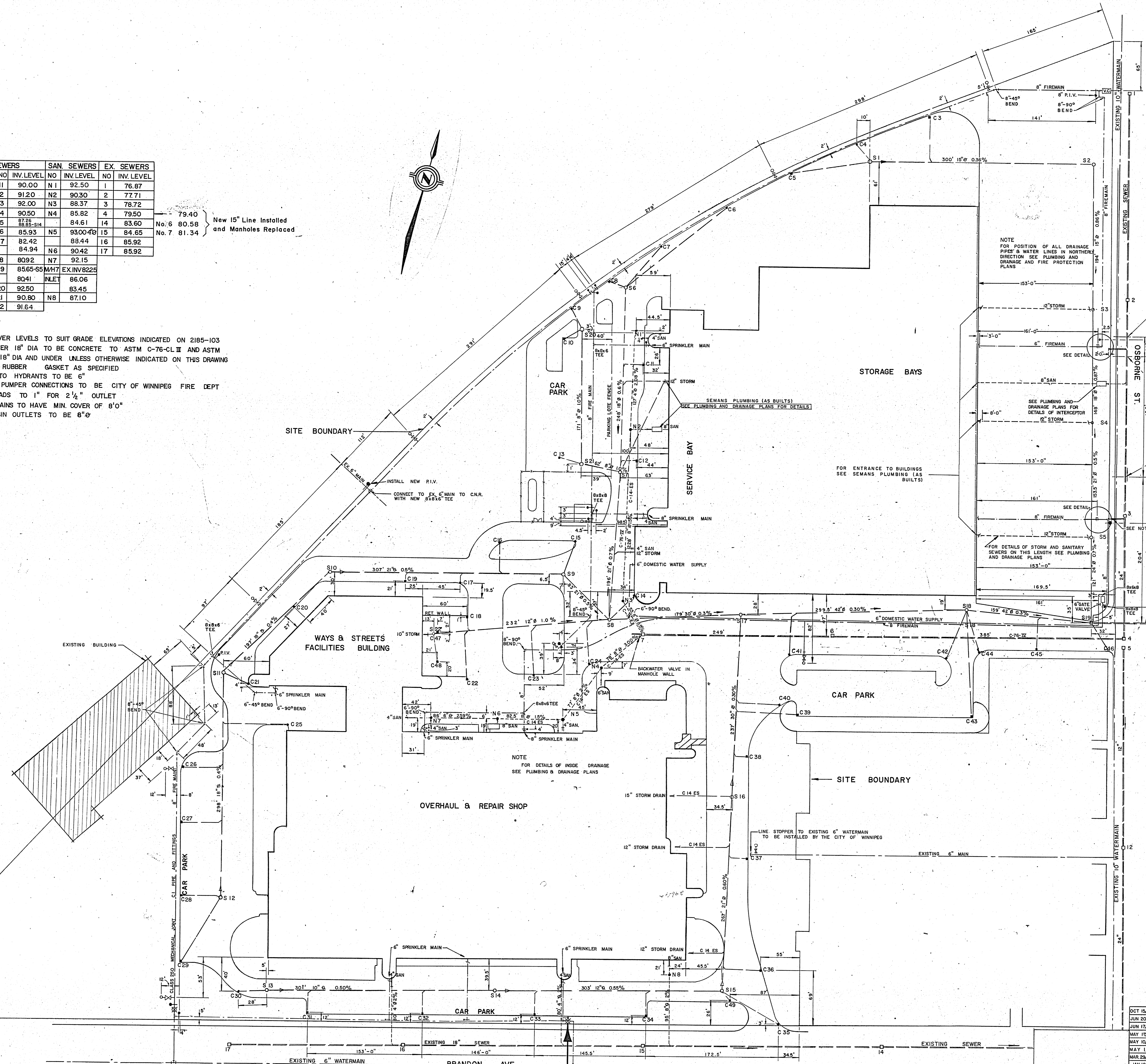


| STORM SEWERS | | SAN. SEWERS | | EX. SEWERS | |
|--------------|------------|-------------|------------|------------|------------|
| S.NO. | INV. LEVEL | S.NO. | INV. LEVEL | N.O. | INV. LEVEL |
| S1 | 92.35 | S11 | 90.00 | N1 | 92.50 |
| S2 | 91.27 | S12 | 91.20 | N2 | 90.30 |
| S3 | 89.40 | S13 | 92.00 | N3 | 88.37 |
| S4 | 88.10 | S14 | 90.50 | N4 | 85.82 |
| S5 | 86.60 | S15 | 87.30 | N5 | 84.61 |
| S6 | 91.00 | S16 | 85.93 | N5 | 93.00 |
| S7 | 89.30 | S17 | 82.42 | N6 | 88.44 |
| S8 | 89.30 | S18 | 84.94 | N6 | 90.42 |
| S9 | 87.70 | S21 | 90.80 | N8 | 87.10 |
| S10 | 89.20 | S22 | 91.64 | | |

79.40
No. 6 80.58
No. 7 81.34

NOTE

1. MANHOLE COVER LEVELS TO SUIT GRADE ELEVATIONS INDICATED ON 2185-103
2. ALL PIPES OVER 18" DIA TO BE CONCRETE TO ASTM C-76-CL II AND ASTM C-14-SS FOR 18" DIA AND UNDER UNLESS OTHERWISE INDICATED ON THIS DRAWING
3. JOINTS TO BE RUBBER GASKET AS SPECIFIED
4. CONNECTIONS TO HYDRANTS TO BE 6"
5. HYDRANT AND PUMPER CONNECTIONS TO BE CITY OF WINNIPEG FIRE DEPT SIZE 6 THREADS TO 1" FOR 2 1/2" OUTLET
6. ALL WATER MAINS TO HAVE MIN. COVER OF 8'0"
7. ALL CATCHBASIN OUTLETS TO BE 6" Ø



LEGEND

- PROPOSED SANITARY SEWERS AND MANHOLES
- PROPOSED STORM SEWERS MANHOLES AND CATCHBASINS
- EXISTING SEWERS
- PROPOSED FIRE MAIN AND PIV
- HYDRANT
- EXISTING WATERMAIN
- CHECK VALVE CHAMBER
- GATE VALVE
- LINE STOPPER

E-2185-102

| DATE | ISSUE | BY | DESCRIPTION | DRAWN |
|----------|-------|----|--|-------|
| OCT 1969 | 1 | JR | AS BUILT | JR |
| JUN 2068 | 2 | JR | AS PER NOTICE OF CHANGE #26 | TB |
| JUN 1768 | 3 | JR | AS PER NOTICE OF CHANGE #25 | JR |
| MAY 1768 | 4 | TB | AS PER NOTICE OF CHANGE #10 | TB |
| MAY 1068 | 5 | JR | AS PER NOTICE OF CHANGE #9 | JR |
| MAY 1968 | 6 | JR | AS PER NOTICE OF CHANGE #8 | JR |
| MAR 2968 | 7 | TB | REVISED PER ASSOCIA 105 - FOR CONSTRUCTION | TB |
| JAN 1968 | 8 | TB | FOR TENDER | TB |
| 20067 | 9 | TB | FOR APPROVAL | TB |

ISSUE OR REVISION

METROPOLITAN CORPORATION OF GREATER WINNIPEG
STREETS AND TRANSIT DIVISION

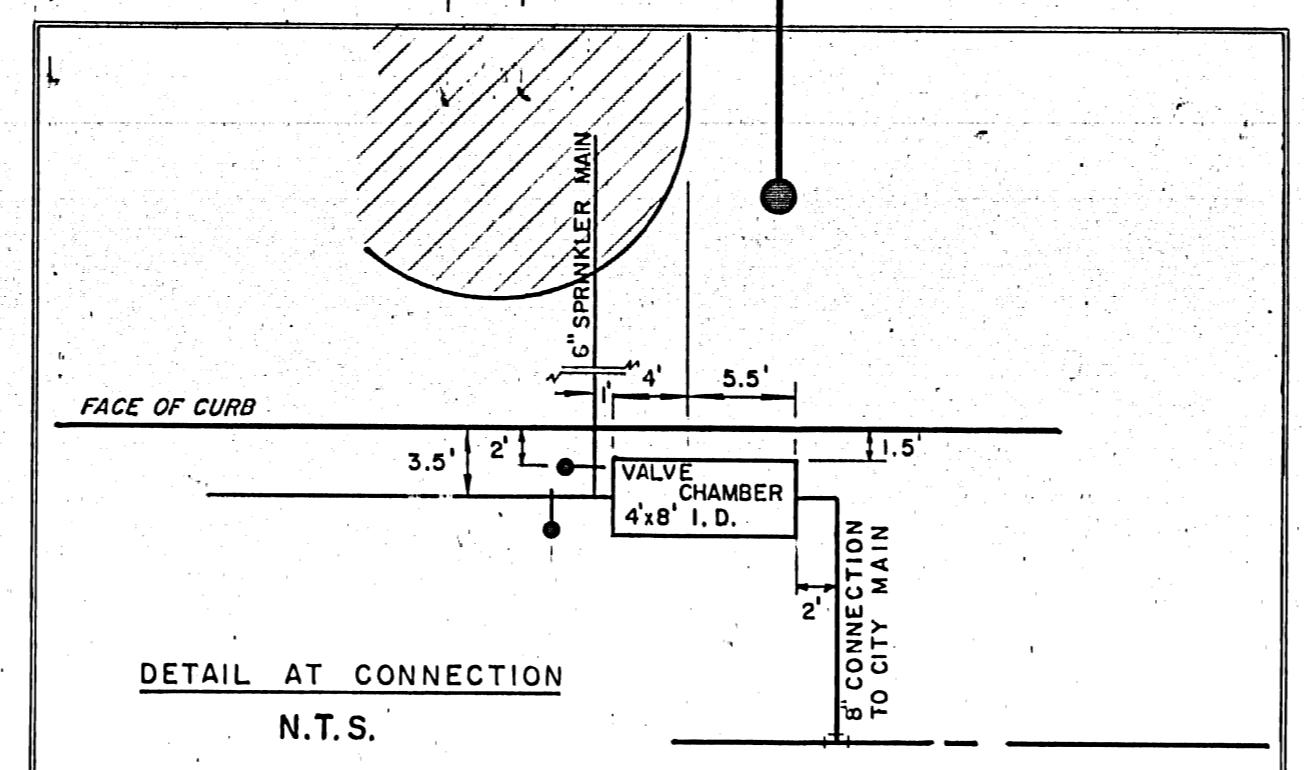
TRANSIT STORAGE AND SHOP FACILITIES
SITE SERVICES
STORM AND SANITARY SEWERS AND WATER SUPPLY

CONSULTING PROFESSIONAL ENGINEERS
A. D. MARGISON AND ASSOCIATES LIMITED
1955 LESLIE STREET, DON MILLS, ONTARIO

ARCHITECTS
Wainman Ross + Blankstein Coop Gillmor Hanna
10 RONALD STREET, WINNIPEG, MANITOBA

APPROVED: *[Signature]* DATE: JAN / 68
CHECKED: DS SCALE: 1" = 50'
FILE NO.: DRAWING NO.: 2185-102

LICENSED TO PRACTICE IN THE PROVINCE OF MANITOBA
My License Expires 30 Jan. 1968



TRANSIT STORAGE & SHOP FACILITIES
 2185-102
 SITE SERVICES - STORM & SANITARY SEWERS & WATER SUPPLY