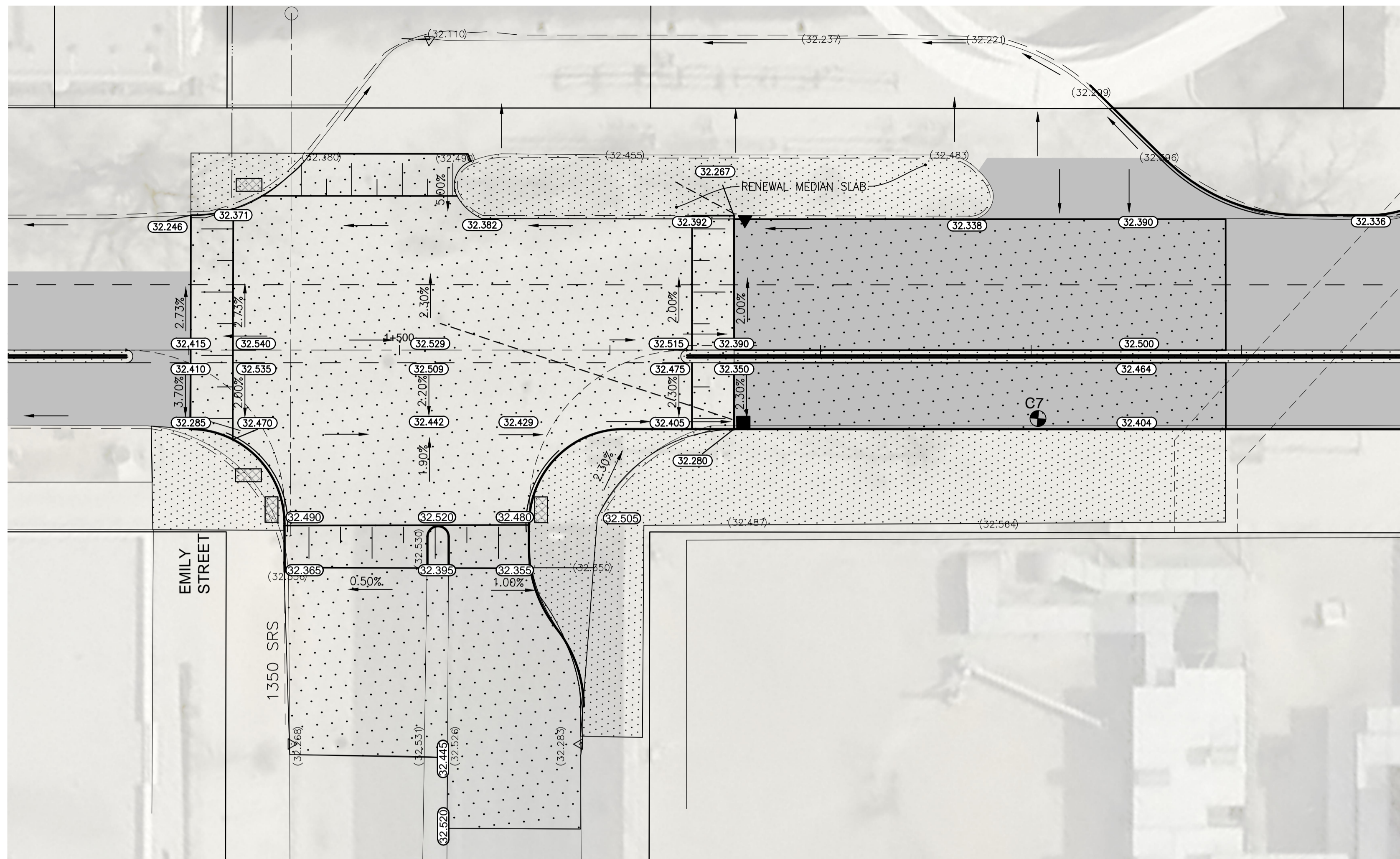
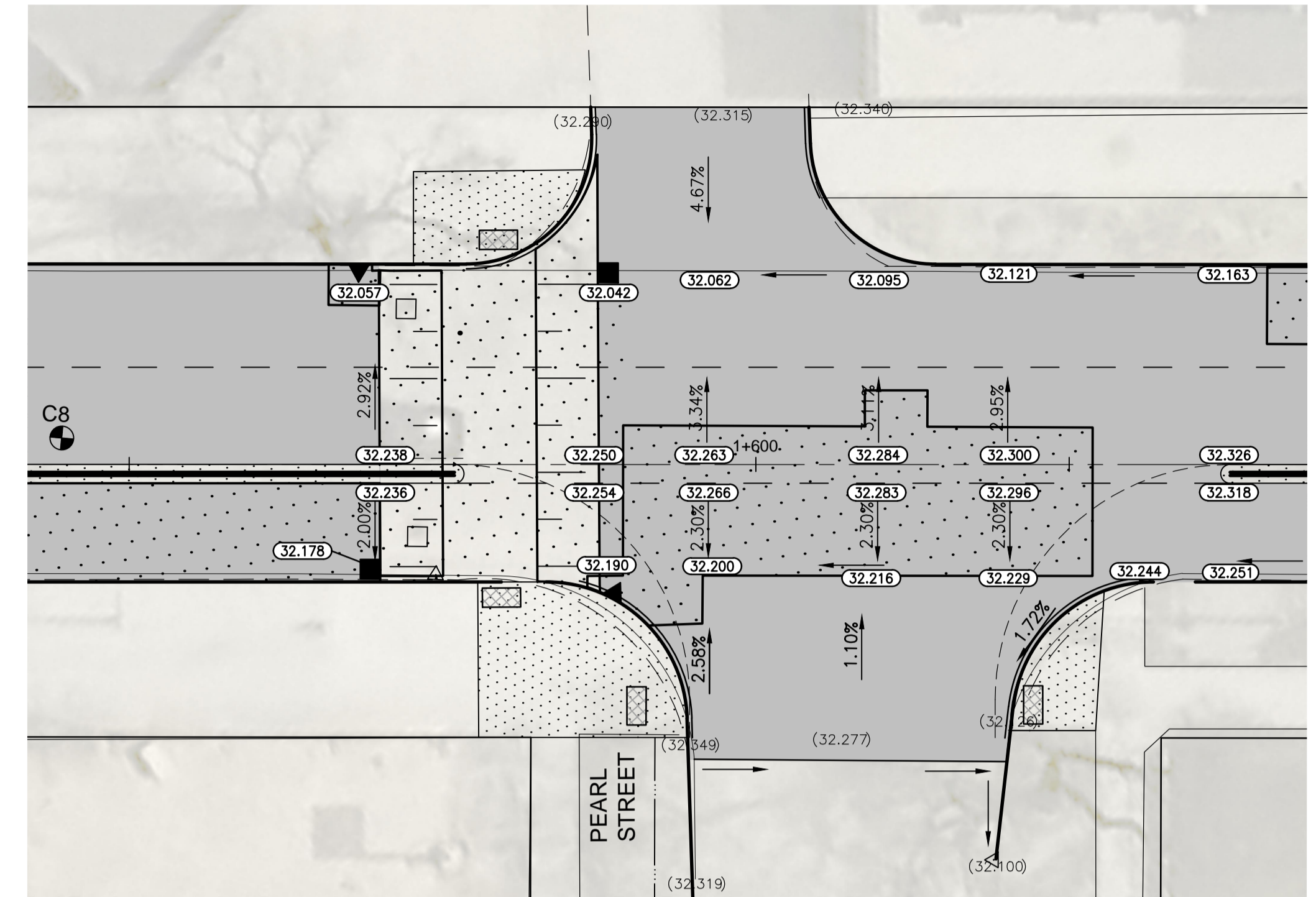


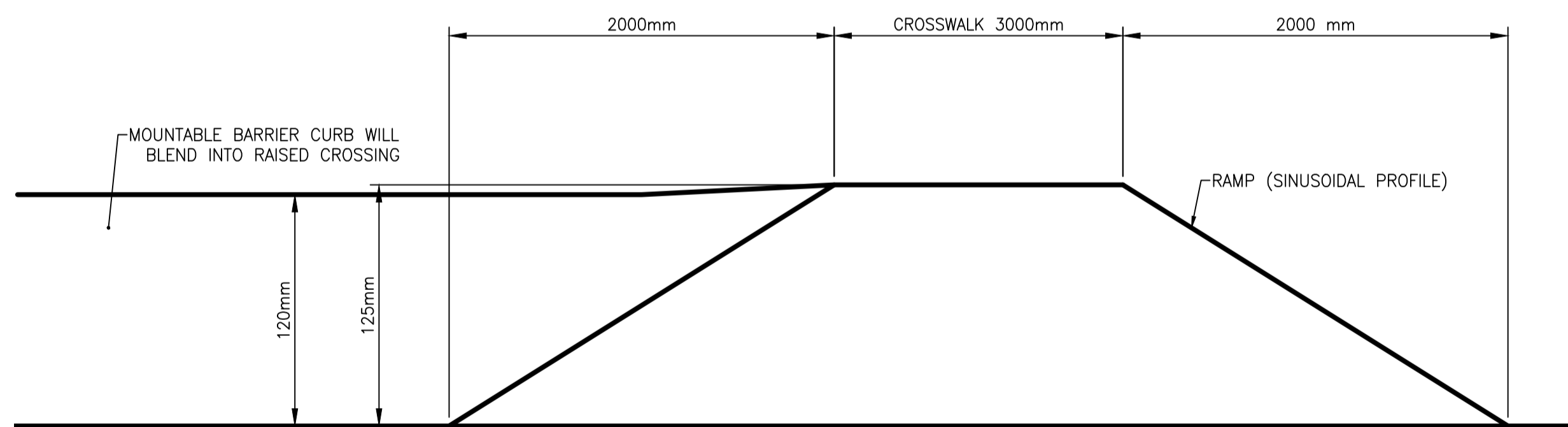
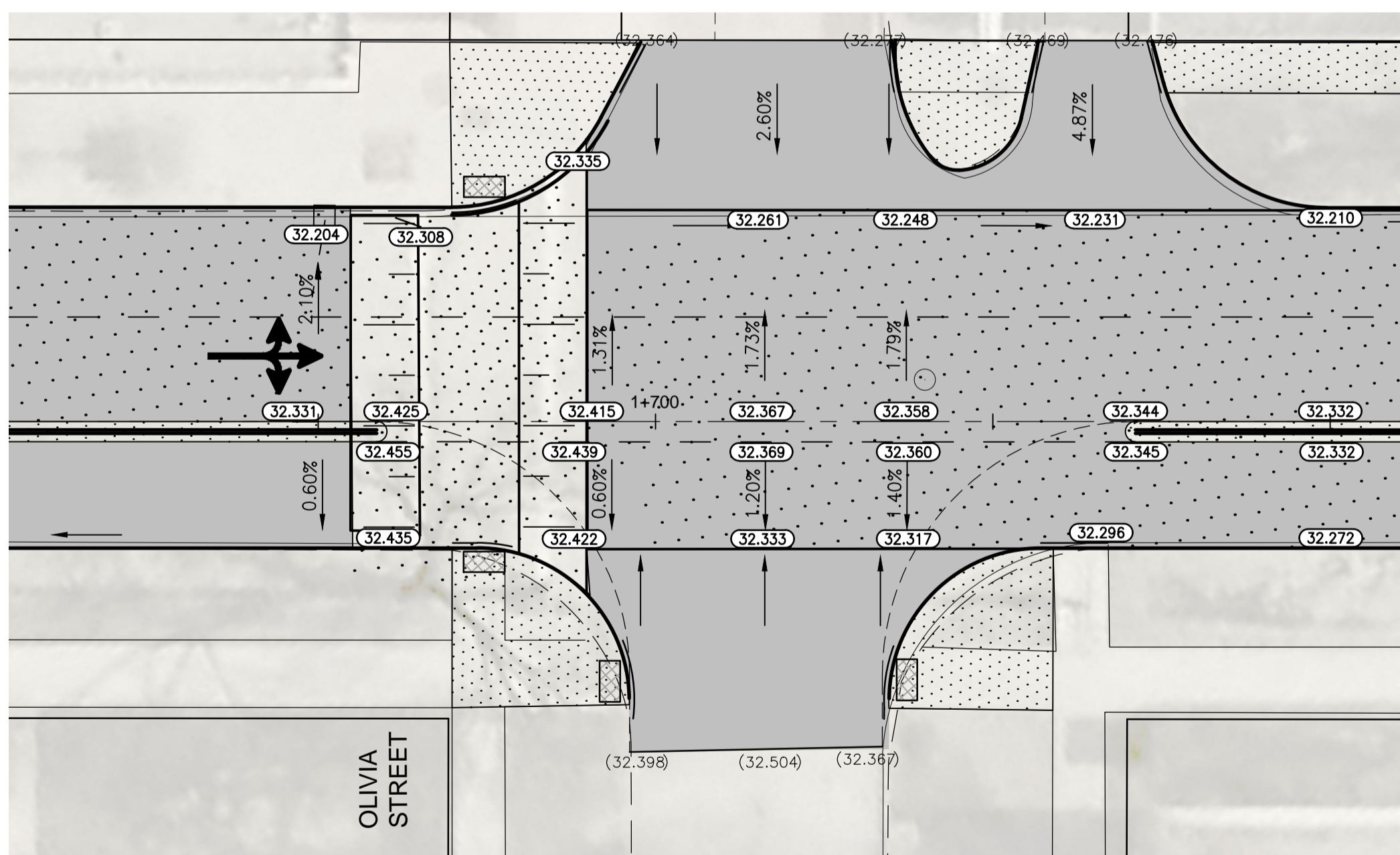
MCDERMOT AVENUE



MCDERMOT AVENUE



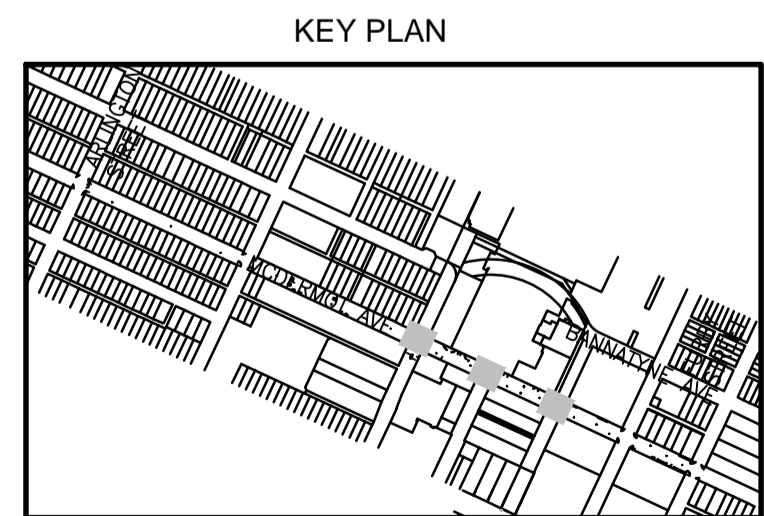
MCDERMOT AVENUE



1 RAISED PEDESTRIAN CROSSING WITH BULLNOSE DETAIL
N.T.S.

- GENERAL NOTES:
- DESIGN GRADES ARE TO BE CONFIRMED ONCE PLANING HAS BEEN COMPLETED.
 - ADJUST WATER VALVES TO MATCH FINAL GRADES.
 - ADJUST PAVEMENT MANHOLE AND CATCHBASIN FRAMES 50mm BELOW FINAL GRADE TO ACCOMMODATE A RISER RING FOR FINAL ASPHALT PAVING OPERATIONS WHERE REQUIRED.
 - MAINTAIN TRAFFIC AS OUTLINED IN THE TRAFFIC MANAGEMENT SPECIFICATION.
 - CURB RENEWALS AS DIRECTED BY THE CONTRACT ADMINISTRATOR.
 - RADIUS CURB RENEWAL ON INTERSECTING STREETS TO BE MODIFIED BARRIER CURB.
 - CONSTRUCT CONCRETE REPAIRS AS DIRECTED BY THE CONTRACT ADMINISTRATOR.
 - ALL CONCRETE RENEWALS TO RECEIVE ASPHALT PATCHING PRIOR TO ASPHALT OVERLAY.
 - MAINTAIN 25-75mm OF REVEAL ON THE SIGNAL BASES.
 - COMPLETE MILL AND 60mm ASPHALT OVERLAY.
 - SIDEWALK RENEWALS AS DIRECTED BY THE CONTRACT ADMINISTRATOR.
 - INSTALL DETECTABLE WARNING TILES AT INTERSECTIONS.
 - DIMENSIONS ON PLAN ARE TO GUTTER.

APEGM
Certificate of Authorization
Stantec Consulting Ltd.
No. 1301



METRIC

WHOLE NUMBERS INDICATE MILLIMETRES
DECIMALIZED NUMBERS INDICATE METRES

WARNING

IF POWER EQUIPMENT OR EXPLOSIVES ARE TO BE USED FOR EXCAVATION ON THIS PROJECT THE CONTRACTOR MUST:

- NOTIFY THE GAS COMPANY OF THE PROPOSED LOCATION OF EXCAVATION.
- TAKE PRECAUTION TO AVOID DAMAGE TO GAS COMPANY INSTALLATIONS SEE PROVINCIAL REGULATION 210/72 FOR DETAILS.
- OBTAIN EXCAVATION PERMITS PRIOR TO CONSTRUCTION.

EXISTING	LEGEND-PLAN	PROPOSED	EXISTING	LEGEND-PLAN	PROPOSED
150 WM	WATERMAIN	150 WM	HYDRO		
300 LDS	LAND DRAINAGE SEWER	300 LDS	M.T.S.		
250 WWS	WASTE WATER SEWER	250 WWS	CONCRETE		
MANHOLE		MANHOLE	ASPHALT		
CATCH BASIN		CATCH BASIN	CONCRETE SIDEWALK		
CURB INLET/CATCH PIT		CURB INLET/CATCH PIT	BOREHOLE		
CURB RENEWAL		CURB RENEWAL	EASEMENT LINE		
TRAFFIC ARROW		TRAFFIC ARROW	PROPERTY LINE		
GAS		GAS	SURVEY BAR		
			ELEVATION		
			SIDEWALK DETECTABLE		

LOCATION APPROVED UNDERGROUND STRUCTURES

SUPV. U/G STRUCTURES COMMITTEE DATE

NOTE:
LOCATION OF UNDERGROUND STRUCTURES AS SHOWN ARE BASED ON THE BEST INFORMATION AVAILABLE BUT NO GUARANTEE IS GIVEN THAT ALL EXISTING UTILITIES ARE SHOWN OR THAT THE GIVEN LOCATIONS ARE EXACT. CONFIRMATION OF EXISTENCE AND EXACT LOCATION OF ALL SERVICES MUST BE OBTAINED FROM THE INDIVIDUAL UTILITIES BEFORE PROCEEDING WITH CONSTRUCTION.

B.M. ELEV.	NO.	REVISIONS	DATE	BY
	0	ISSUED FOR TENDER	17.06.23	S.B.C.

Stantec
500 - 311 Portage Avenue, Winnipeg MB
www.stantec.com

DESIGNED BY: D.L.	CHECKED BY: R.H.
DRAWN BY: G.P.	APPROVED BY: S.B.C.
HOR. SCALE: 1:150	RELEASED FOR CONSTRUCTION: DATE
VERTICAL: DATE	DATE 17.03.20

ENGINEER'S SEAL
PRELIMINARY DRAWING
NOT TO BE USED FOR CONSTRUCTION
CONSULTANT DRAWING NO. C215

THE CITY OF WINNIPEG
PUBLIC WORKS DEPARTMENT
ENGINEERING DIVISION

2017 WALK/BIKE INFRASTRUCTURE PROGRAM
MCDERMOT AVENUE
ARLINGTON STREET TO FURBY STREET
INTERSECTION DESIGN

SHEET 16 OF 17
CAD FILE DRAWING NUMBER 07230c-210-903.dwg
CITY DRAWING NUMBER P3483-16