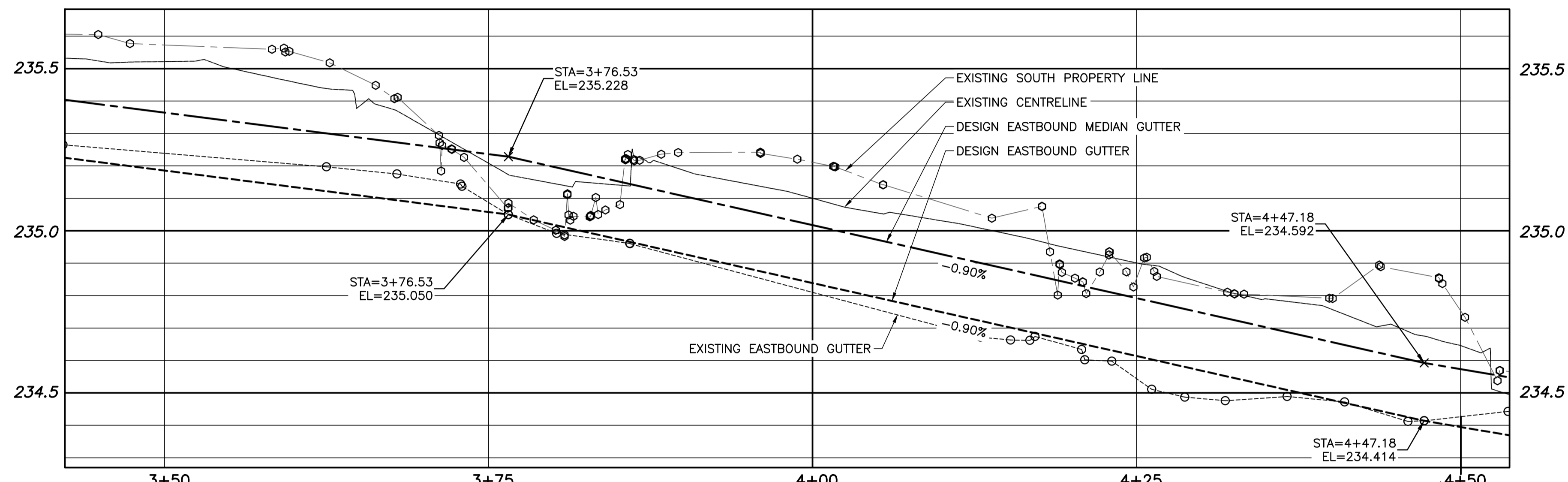
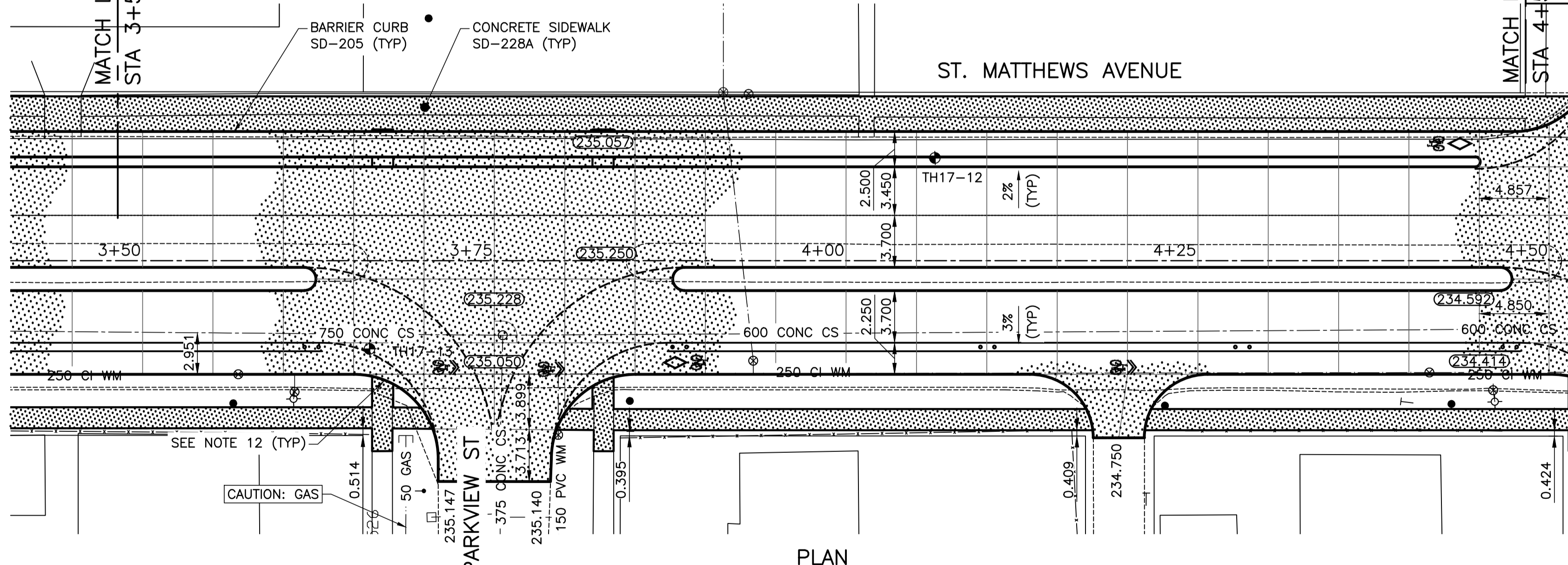


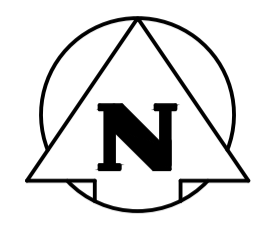
WESTBOUND - PROFILE



EASTBOUND - PROFILE



PLAN



NOTES:

1. STATION IN CENTRE OF ST MATTHEWS RIGHT-OF-WAY UNLESS OTHERWISE NOTED.
2. BASELINE IS CENTRELINE OF ST MATTHEWS RIGHT-OF-WAY.
3. WEST PROPERTY LINE OF FERRY ROAD IS STA 1+00.0
4. ALL MEASUREMENTS TO BACK OF CURB.
5. ALL EXISTING TREES TO BE PROTECTED AND MAINTAINED THROUGHOUT CONSTRUCTION.
6. ALL BUS STOPS WITHIN LIMITS OF CONSTRUCTION TO BE TEMPORARILY RELOCATED BY OTHERS DURING WORKS.
7. HAND OR SOFT DIG METHODS REQUIRED OVER ALL UTILITIES AT INTERVALS DETERMINED BY THE ENGINEER TO DETERMINE DEPTH OF COVER.
8. NO WORKS, INCLUDING CONCRETE CUTTING OR BREAKING, TO BE UNDERTAKEN NEAR GAS LINES UNTIL DEPTH OF COVER IS DETERMINED AND A MB HYDRO SAFETY WATCH IS ON SITE.
9. ANY GAS MAINS OR SERVICES EXPOSED IN THE EXCAVATION AREA TO BE ROCK WRAPPED IN ACCORDANCE WITH MB HYDRO STANDARDS PRIOR TO WORK PROCEEDING ON SITE.
10. NO VIBRATORY COMPACTION PERMITTED WITHIN 1M OF GAS MAINS.
11. INSTALL MODIFIED BARRIER CURB AT ALL INTERSECTION RADII, ALLEY RADII, AND BULLNOSES.
12. CONSTRUCT NEW MONOLITHIC CURB RAMP (10mm HEIGHT INTEGRAL)
13. REPLACE EXISTING SD-24 CATCHBASIN INSTALL BARRIER CURB AND GUTTER INLET FRAME (AP-008) AND INLET COVER (AP-008) AND REPLACE 250 LEAD @ 2% MINIMUM GRADE.
14. TRANSVERSE JOINTS SPACED AT 5.0 INTERVALS UNLESS OTHERWISE NOTED.

WARNING

NOTIFY THE GAS COMPANY OF THE PROPOSED LOCATION OF EXCAVATION.
TAKE PRECAUTION TO AVOID DAMAGE TO GAS COMPANY INSTALLATIONS.
SEE PROVINCIAL REGULATION 210/72 FOR DETAILS.

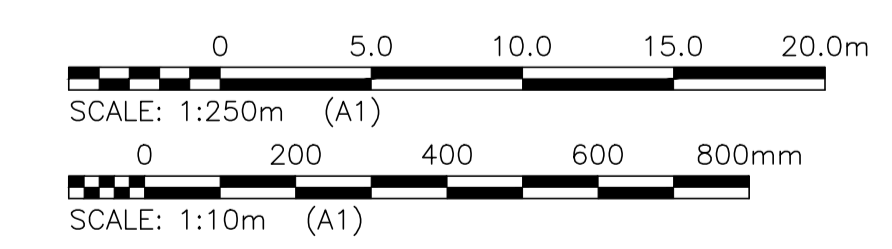
PROPERTY LIMITS DELINEATION

DELINEATION OF PROPERTY LIMITS AS SHOWN ON THIS DWG DOES NOT REPRESENT A "LEGAL SURVEY". KGS GROUP MAKES NO REPRESENTATION OR WARRANTY AS TO THE ACCURACY OF PROPERTY LIMITS DELINEATED ON THIS DWG, NOR ON THE DIMENSIONAL ACCURACY OF DWG FEATURES RELATIVE TO THOSE PROPERTY LIMITS.

METRIC

WHOLE NUMBERS INDICATE MILLIMETRES
DECIMALIZED NUMBERS INDICATE METRES

PRELIMINARY
NOT TO BE USED FOR CONSTRUCTION



300_LDS	LAND DRAINAGE SEWER	300_LDS		TEST HOLE	
250_WWS	WASTE WATER SEWER	250_WWS		GUY WIRE	
	GAS			LIGHT STANDARD	
	HYDRO			BACK OF CURB	
	M.T.S.			CONCRETE	
150_WM	WATERMAIN	150_WM		ASPHALT	
	HYDRANT			SIDEWALK	
	VALVE			PROPERTY LINE	
	MANHOLE			SURVEY BAR	
	CATCH BASIN			GEODETIC BENCHMARK	
	CURB INLET			ELEVATION	
	POLES				
EXISTING	LEGEND-PLAN	PROPOSED	EXISTING	LEGEND-PLAN	PROPOSED

LOCATION APPROVED UNDERGROUND STRUCTURES		B.M. KGS_BASE ELEV. 249.213	COORDINATE SYSTEM: COV28
SUPV. U/G STRUCTURES COMMITTEE	DATE		
NOTE: LOCATION OF UNDERGROUND STRUCTURES AS SHOWN ARE BASED ON THE BEST INFORMATION AVAILABLE BUT NO GUARANTEE IS GIVEN THAT ALL EXISTING UTILITIES ARE SHOWN OR THAT THE GIVEN LOCATIONS ARE EXACT. CONFIRMATION OF EXISTENCE AND EXACT LOCATION OF ALL SERVICES MUST BE OBTAINED FROM THE INDIVIDUAL UTILITIES BEFORE PROCEEDING WITH CONSTRUCTION.			
B	ISSUED FOR TENDER	17/06/21	
A	ISSUED FOR REVIEW	17/06/12	
NO.	REVISIONS	DATE	BY

KGS GROUP CONSULTING ENGINEERS		ENGINEER'S SEAL
DESIGNED BY	JB	CHECKED BY
DRAWN BY	JB	APPROVED BY
HOR. SCALE:	1:250	RELEASED FOR CONSTRUCTION:
VERTICAL:	1:10	DATE
DATE	17/04/18	DATE

THE CITY OF WINNIPEG
PUBLIC WORKS DEPARTMENT
ENGINEERING DIVISION

PROJECT TITLE
2017 INDUSTRIAL STREETS PACKAGE

ST. MATTHEWS AVENUE
PLAN/PROFILE
STA 3+50 TO STA 4+50

SHEET OF
18 OF **26**

COMPUTER FILE NAME
ST. MATTHEWS_CALL.DWG

CITY DRAWING NUMBER

CONSULTANT DRAWING NO.
C204

P:\PROJECTS\2017\17-0107-005\DESIGN\MUN\ST_MATTHEWS_DESIGN.dwg
PLOT 1:1 (A-1)