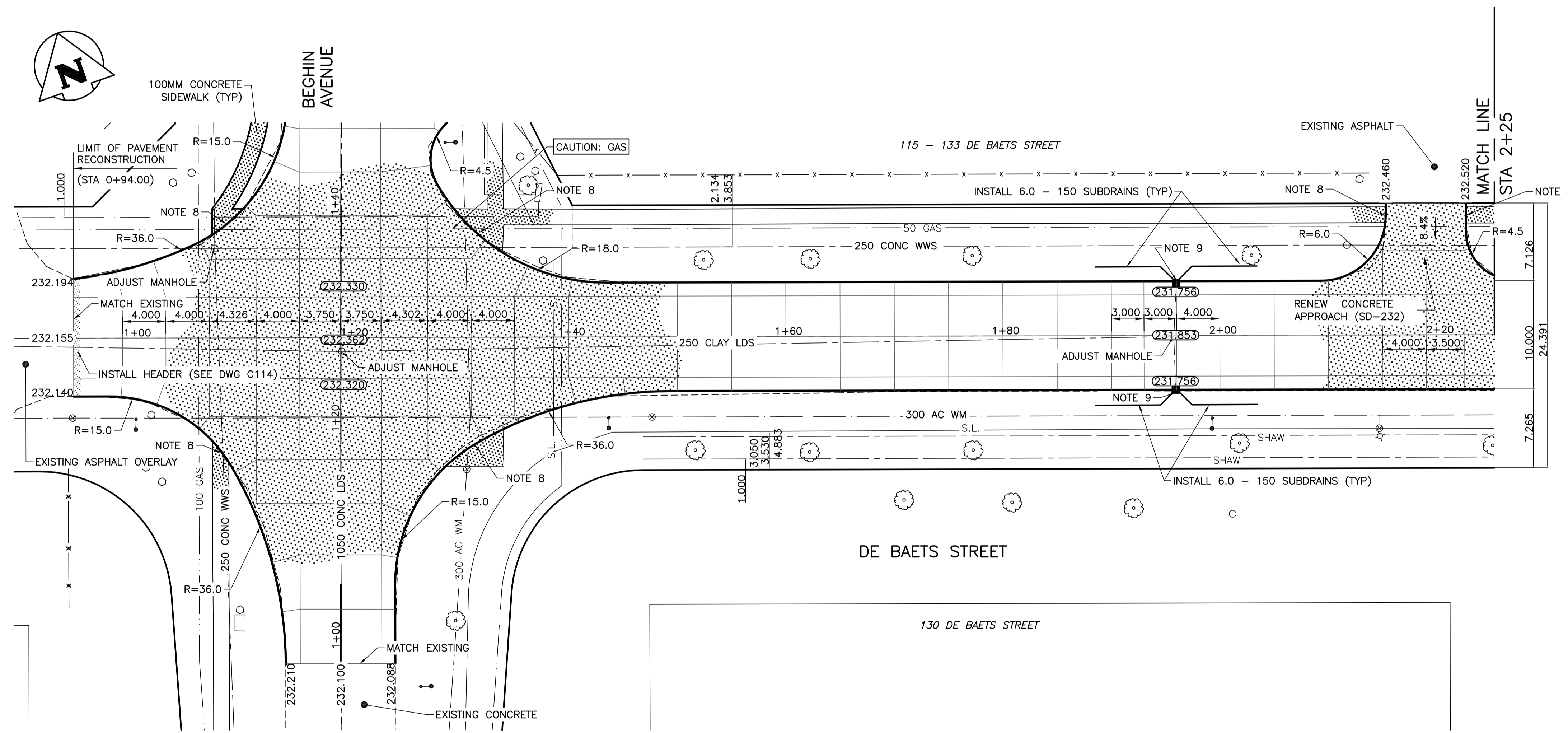


DE BAETS STREET - PROFILE



DE BAETS STREET - PLAN

NOTES:

1. ALL MEASUREMENTS TO BACK OF CURB.
2. ALL EXISTING TREES TO BE PROTECTED AND MAINTAINED THROUGHOUT CONSTRUCTION.
3. ALL BUS STOPS WITHIN LIMITS OF CONSTRUCTION TO BE TEMPORARILY RELOCATED BY OTHERS DURING WORKS.
4. HAND OR SOFT DIG METHODS REQUIRED OVER ALL UTILITIES AT INTERVALS DETERMINED BY THE ENGINEER TO DETERMINE DEPTH OF COVER.
5. NO WORKS, INCLUDING CONCRETE CUTTING OR BREAKING, TO BE UNDERTAKEN NEAR GAS LINES UNTIL DEPTH OF COVER IS DETERMINED AND A MB HYDRO SAFETY WATCH IS ON SITE.
6. ANY GAS MAINS OR SERVICES EXPOSED IN THE EXCAVATION AREA TO BE ROCK WRAPPED IN ACCORDANCE WITH MB HYDRO STANDARDS PRIOR TO WORK PROCEEDING ON SITE.
7. NO VIBRATORY COMPACTION PERMITTED WITHIN 1M OF GAS MAINS.
8. CONSTRUCT NEW MONOLITHIC CURB RAMP (10mm HEIGHT INTEGRAL).
9. REPLACE EXISTING SD-24 CATCHBASIN INSTALL BARRIER CURB AND GUTTER INLET FRAME (AP-008) AND INLET COVER (AP-008) AND REPLACE 250 LEAD @ 2% MINIMUM GRADE.
10. TRANSVERSE JOINTS SPACED AT 5.0 INTERVALS UNLESS OTHERWISE NOTED.

PROPERTY LIMITS DELINEATION

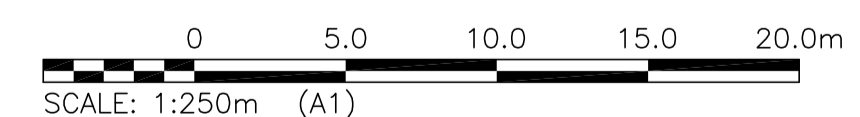
DELINEATION OF PROPERTY LIMITS AS SHOWN ON THIS DWG DOES NOT REPRESENT A "LEGAL SURVEY". KGS GROUP MAKES NO REPRESENTATION OR WARRANTY AS TO THE ACCURACY OF PROPERTY LIMITS DELINEATED ON THIS DWG, NOR ON THE DIMENSIONAL ACCURACY OF DWG FEATURES RELATIVE TO THOSE PROPERTY LIMITS.

WARNING

NOTIFY THE GAS COMPANY OF THE PROPOSED LOCATION OF EXCAVATION. TAKE PRECAUTION TO AVOID DAMAGE TO GAS COMPANY INSTALLATIONS. SEE PROVINCIAL REGULATION 210/72 FOR DETAILS.

METRIC

WHOLE NUMBERS INDICATE MILLIMETRES
DECIMALIZED NUMBERS INDICATE METRES



PRELIMINARY
NOT TO BE USED FOR CONSTRUCTION

| | | | | | | | |
|----------|---------------------|----------|----------|--------------------|----------|----------|----------------|
| 300 LDS | LAND DRAINAGE SEWER | 300 LDS | | TEST HOLE | | | |
| 250 WWS | WASTE WATER SEWER | 250 WWS | | GUY WIRE | | | |
| | GAS | | | LIGHT STANDARD | | | |
| | HYDRO | | | BACK OF CURB | | | |
| | M.T.S. | | | CONCRETE | | | |
| 150 WM | WATERMAIN | 150 WM | | ASPHALT | | | |
| | HYDRANT | | | SIDEWALK | | | |
| | VALVE | | | PROPERTY LINE | | | |
| | MANHOLE | | | SURVEY BAR | | | |
| | CATCH BASIN | | | GEODETIC BENCHMARK | | | |
| | CURB INLET | | | ELEVATION | | | |
| | POLES | | | | | | |
| EXISTING | LEGEND-PLAN | PROPOSED | EXISTING | LEGEND-PLAN | PROPOSED | EXISTING | LEGEND-PROFILE |
| | | | | | | | |

LOCATION APPROVED UNDERGROUND STRUCTURES

SUPV. U/G STRUCTURES COMMITTEE DATE
NOTE: LOCATION OF UNDERGROUND STRUCTURES AS SHOWN ARE BASED ON THE BEST INFORMATION AVAILABLE BUT NO GUARANTEE IS GIVEN THAT ALL EXISTING UTILITIES ARE SHOWN OR THAT THE GIVEN LOCATIONS ARE EXACT. CONFIRMATION OF EXISTENCE AND EXACT LOCATION OF ALL SERVICES MUST BE OBTAINED FROM THE INDIVIDUAL UTILITIES BEFORE PROCEEDING WITH CONSTRUCTION.

| | |
|-----------------------------|---------------------------|
| B.M. KGS_BASE ELEV. 249.213 | COORDINATE SYSTEM: CGVD28 |
| ISSUED FOR TENDER | 17/06/20 |
| ISSUED FOR REVIEW | 17/06/12 |
| NO. REVISIONS | DATE BY |

| | |
|---------------------------------------|----------------------------|
| KGS GROUP CONSULTING ENGINEERS | |
| DESIGNED BY: AKW | CHECKED BY: |
| DRAWN BY: AKW | APPROVED BY: |
| HOR. SCALE: 1:250 | RELEASED FOR CONSTRUCTION: |
| VERTICAL: 1:10 | DATE: 17/04/18 |

ENGINEER'S SEAL
CONSULTANT DRAWING NO. **C104**

THE CITY OF WINNIPEG PUBLIC WORKS DEPARTMENT ENGINEERING DIVISION

PROJECT TITLE: **2017 INDUSTRIAL STREETS PACKAGE**
SHEET OF: **04 OF 26**

COMPUTER FILE NAME: **ST BONIFACE_DESIGN.DWG**

CITY DRAWING NUMBER: **—**

DE BAETS STREET PLAN/PROFILE
BEGHIN AVENUE TO STA 2+25