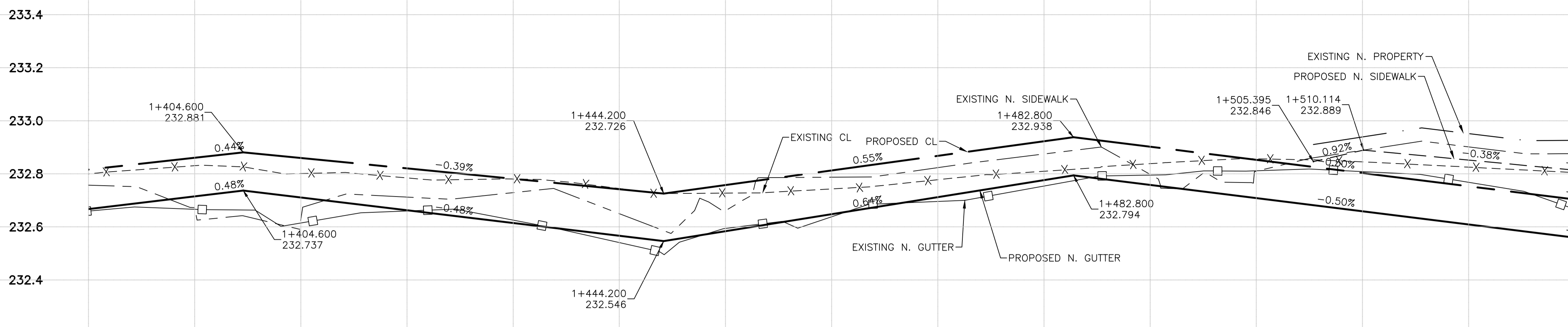
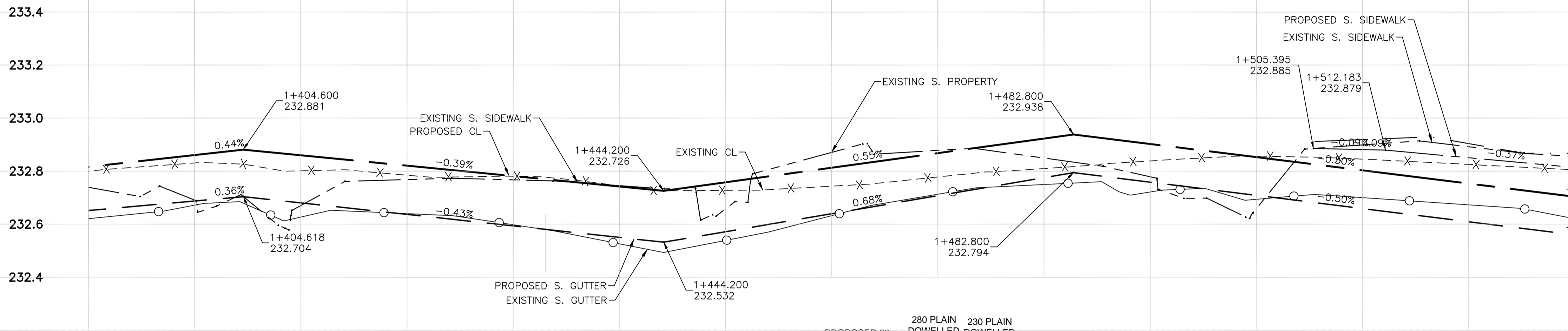


WESTBOUND



EASTBOUND



- CONSTRUCTION NOTES: (RECONSTRUCTION)**
- ADJUST ALL ROADWAY APPURTENANCE TO MATCH FINAL GRADES.
 - ADJUST MANHOLE AND CATCHBASIN WITHIN THE ROADWAY 50mm BELOW FINAL GRADE TO ACCOMMODATE A RISER RING.
 - COMPLETE DRAINAGE INLET WORKS AS NOTED.
 - ALL RADII CURB TO BE MODIFIED BARRIER CURB.
 - BACK LANE & SIDE STREET APPROACH PAVEMENT SECTION:
 - 150 REINFORCED CONCRETE PAVEMENT
 - 75 - 20mm CRUSHED BASE COURSE
 - 300 - 50mm CRUSHED SUBBASE
 - SUBGRADE COMPACTION
- CONSTRUCTION NOTES: (REHABILITATION)**
- DESIGN GRADES ARE TO BE CONFIRMED ONCE PLANING HAS BEEN COMPLETED.
 - ADJUST ALL ROADWAY APPURTENANCES TO MATCH FINAL GRADES.
 - ADJUST MANHOLES AND CATCHBASINS WITHIN THE ROADWAY 50mm BELOW FINAL GRADE TO ACCOMMODATE A RISER RING FOR FINAL PAVING OPERATIONS.
 - MILL EXISTING OVERLAY REQUIRED DEPTH FOR 80mm (AVERAGE) ASPHALT PAVEMENT OVERLAY.
 - COMPLETE CURB AND SIDEWALK RENEWAL WORKS. AREAS TO BE VERIFIED BY CONTRACT ADMINISTRATOR. MAINTAIN MINIMUM 2% SIDEWALK CROSSFALL UNLESS DIRECTED BY THE CONTRACT ADMINISTRATOR AND 100mm MINIMUM CURB REVEAL.
 - COMPLETE DRAINAGE INLET WORKS AS NOTED.
 - ALL CURB TO BE BARRIER CURB EXCEPT FOR RADII CURB RENEWAL TO BE MODIFIED BARRIER CURB AND RAMP CURB.
 - COMPLETE ASPHALT LEVELLING OVER FULL DEPTH CONCRETE REPAIRS AS PER SPECIFICATIONS.
 - PAVEMENT WIDENING:
 - ASPHALT TO MATCH FINAL THICKNESS
 - 200 REINFORCED CONCRETE PAVEMENT
 - 75 - 20mm CRUSHED BASE COURSE
 - 150 - 50mm CRUSHED SUBBASE
 - SUBGRADE COMPACTION
 - REMOVAL OF ABANDONED 200 WM FOR INSTALLATION OF CB SERVICE PIPING WILL BE INCIDENTAL TO THE WORKS.
 - INSTALL HOOD & RUNGS IN CB'S WHERE REQUIRED.
 - WORKS IN CLOSE PROXIMITY TO THE 400 WM ARE TO COMPLY WITH THE CONTRACT SPECIFICATIONS.
- GENERAL NOTES:**
- MAINTAIN TRAFFIC AS OUTLINED IN THE TRAFFIC MANAGEMENT SPECIFICATION AND TRAFFIC CONTROL/CONSTRUCTION STAGING DRAWINGS.
 - PROVIDE 1 WEEK NOTICE FOR STREET LIGHT RELOCATES AND EXCAVATION WORK WITHIN 1.5m OF EXISTING HYDRO POLES. COORDINATED WITH MANITOBA HYDRO.

METRIC
WHOLE NUMBERS INDICATE MILLIMETRES
DECIMALIZED NUMBERS INDICATE METRES

WARNING

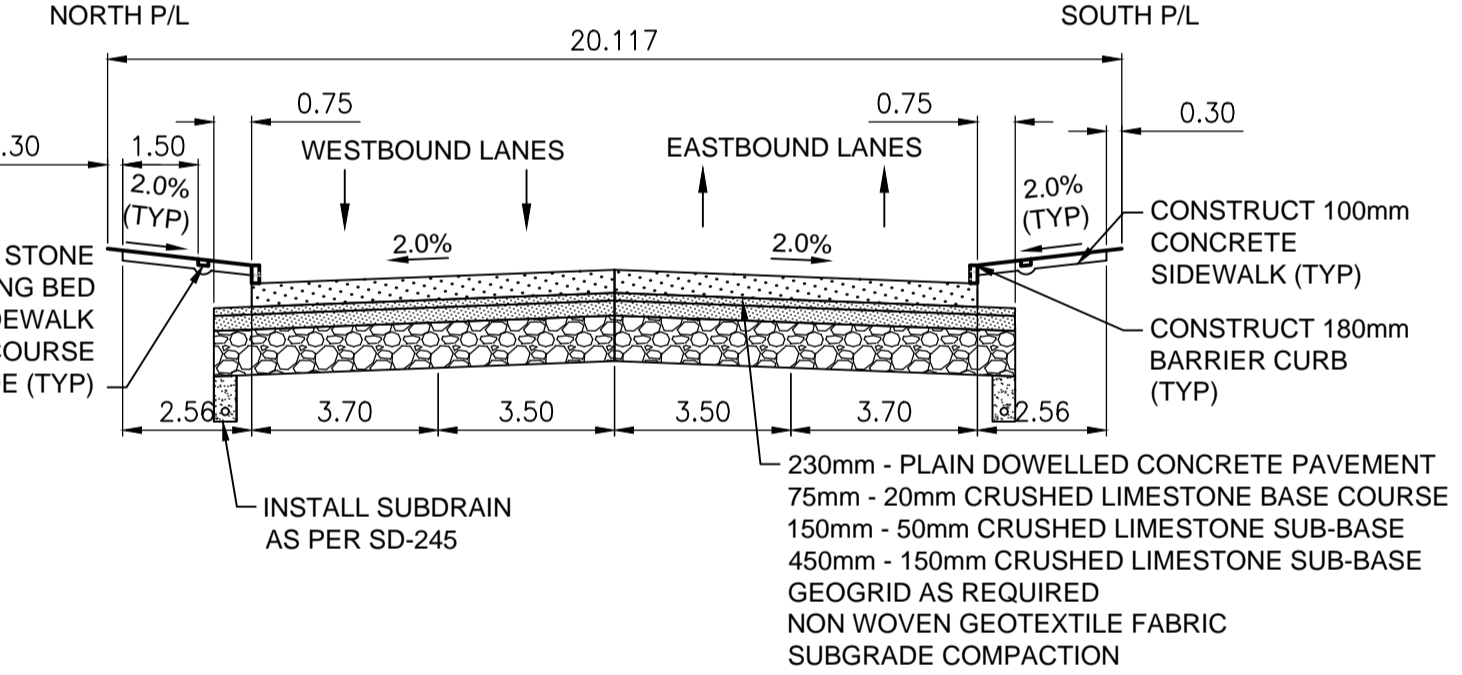
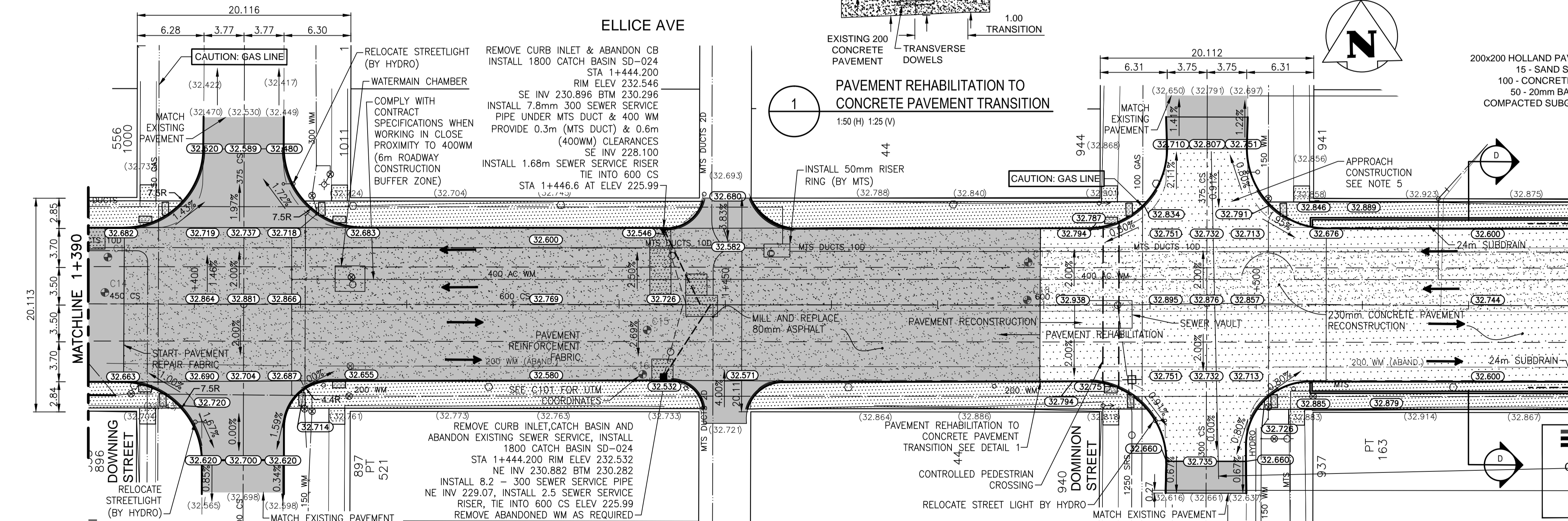
- IF POWER EQUIPMENT OR EXPLOSIVES ARE TO BE USED FOR EXCAVATION ON THIS PROJECT THE CONTRACTOR MUST:
- NOTIFY THE GAS COMPANY OF THE PROPOSED LOCATION OF EXCAVATION.
 - TAKE PRECAUTION TO AVOID DAMAGE TO GAS COMPANY INSTALLATIONS SEE PROVINCIAL REGULATION 210/72 FOR DETAILS.
 - OBTAIN EXCAVATION PERMITS PRIOR TO CONSTRUCTION.

1+400

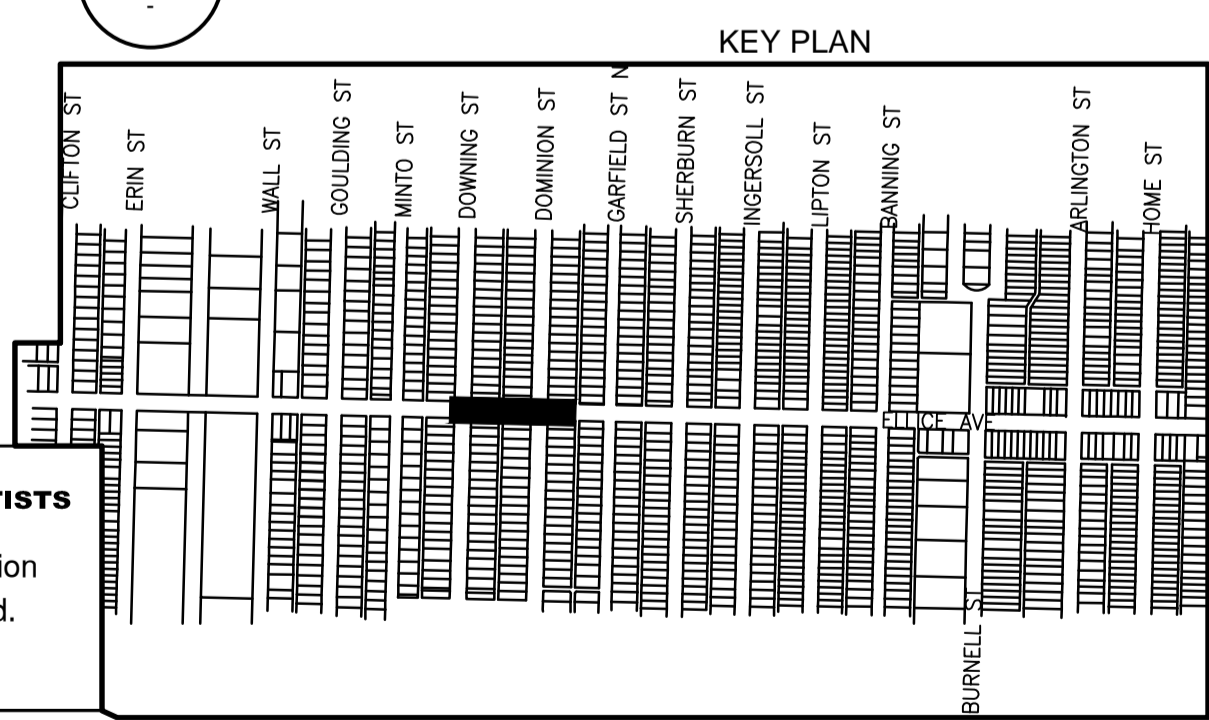
1+450

1+500

ELLICE AVE



RECONSTRUCTION SECTION FROM W. PL OF DOMINION ST. TO E PL OF ARLINGTON ST.



EXISTING	LEGEND-PROFILE	PROPOSED	EXISTING	LEGEND-PLAN	PROPOSED	EXISTING	LEGEND-PLAN	PROPOSED
150 WM	WATERMAIN	150 WM	WATERMAIN	150 WM	HYDRO	---	---	---
±	HYDRANT, VALVE	±	HYDRANT	±	M.T.S.	---	---	---
300 LDS	LAND DRAINAGE SEWER	300 LDS	VALVE	300 LDS	CONCRETE	---	---	---
250 WWS	WASTE WATER SEWER	250 WWS	LAND DRAINAGE SEWER	300 LDS	MILL AND OVERLAY	---	---	---
○	PROFILE	○	WASTE WATER SEWER	250 WWS	CONCRETE SIDEWALK	---	---	---
○	NORTH OR WEST GUTTER	○	MANHOLE	○	HYDRO POLE	---	---	---
○	SOUTH OR EAST GUTTER	○	CATCH BASIN	○	SIGN	---	---	---
◇	NORTH OR WEST R	◇	CURB INLET/CATCH PIT	▽	PROPERTY LINE	---	---	---
◇	SOUTH OR EAST R	◇	CURB RENEWAL	▽	CORE HOLE	---	---	---
△	NORTH OR WEST DITCH	△	TRAFFIC SIGNAL	△	ELEVATION	(32.515)	---	---
▽	SOUTH OR EAST DITCH	▽	GAS	---	SIDEWALK DETECTABLE	---	---	---

LOCATION APPROVED UNDERGROUND STRUCTURES

SUPV. U/G STRUCTURES COMMITTEE DATE

NOTE:
LOCATION OF UNDERGROUND STRUCTURES AS SHOWN ARE BASED ON THE BEST INFORMATION AVAILABLE BUT NO GUARANTEE IS GIVEN THAT ALL EXISTING UTILITIES ARE SHOWN OR THAT THE GIVEN LOCATIONS ARE EXACT. CONFIRMATION OF EXISTENCE AND EXACT LOCATION OF ALL SERVICES MUST BE OBTAINED FROM THE INDIVIDUAL UTILITIES BEFORE PROCEEDING WITH CONSTRUCTION.

NO.	REVISIONS	DATE	BY
1	ISSUED FOR TENDER	17.06.12	
0	ISSUED FOR REVIEW	17.05.30	

Stantec
500 - 311 Portage Avenue, Winnipeg MB
www.stantec.com

DESIGNED BY: D.L. CHECKED BY: D.M.
DRAWN BY: G.P. APPROVED BY: S.B.C.

HOR. SCALE: 1:250
VERTICAL: 1:10

RELEASED FOR CONSTRUCTION: DATE

2017.04.13

PRELIMINARY DRAWING

NOT TO BE USED FOR CONSTRUCTION

CONSULTANT DRAWING NO. C204

THE CITY OF WINNIPEG
PUBLIC WORKS DEPARTMENT
ENGINEERING DIVISION

2017 REGIONAL STREET RENEWAL PROGRAM

ERIN STREET TO ARLINGTON STREET
REHABILITATION AND RECONSTRUCTION

SHEET II OF 20
CAD FILE DRAWING NUMBER 07271c-201-xxx.dwg
CITY DRAWING NUMBER P-3485-II