

PRELIMINARY
NOT TO BE USED FOR
CONSTRUCTION

CONSTRUCTION NOTES

- 1) CURB REPLACEMENT AS DIRECTED BY THE CONTRACT ADMINISTRATOR.
- 2) ALL STREET RADIUS CURB UNDER 15M RADIUS SHALL BE REPLACED AS MODIFIED OR AS DIRECTED BY THE CONTRACT ADMINISTRATOR.
- 3) PAVEMENT REPAIRS SHOWN ARE ONLY A REPRESENTATIVE SAMPLE OF THE TENDERED QUANTITIES.
- 4) ASPHALT TIE-INS ON APPROACHES TO BE DETERMINED IN THE FIELD BY THE CONTRACT ADMINISTRATOR.
- 5) INSTALL DETECTIBLE WARNING SURFACE TILES AT CURB RAMPS AS PER CW3326

WARNING

IF POWER EQUIPMENT OR EXPLOSIVES ARE TO BE USED FOR EXCAVATION ON THIS PROJECT THE CONTRACTOR MUST:

- 1) OBTAIN CLEARANCE FROM THE GAS UTILITY PRIOR TO EXCAVATION.
- 2) TAKE PRECAUTION TO AVOID DAMAGE TO GAS UTILITY INSTALLATIONS.

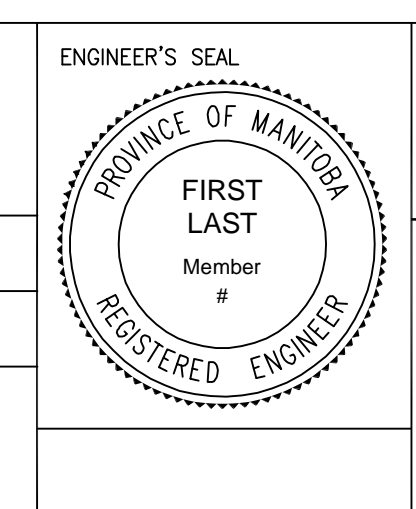
SEE PROVINCIAL REGULATION 210/72 FOR DETAILS

METRIC
WHOLE NUMBERS INDICATE MILLIMETRES
DECIMALIZED NUMBERS INDICATE METRES

BID OPPORTUNITY NO. 4-2017

HYDRANT	+	---	LDS/WWS	---	CONCRETE	[Pattern]	LOCATION APPROVED	
VALVE	●	---	WATERMAIN	---	CONCRETE SIDEWALK	[Pattern]	UNDERGROUND STRUCTURES	B.M. I.B. AT N.W. CORNER OF 1330 MC PHILLIPS ST. ELEV. 232.145
CURB STOP	+	---	GAS	---	ASPHALT	[Pattern]	DATE	ENGINEERING DIVISION TECHNOLOGY SERVICES BRANCH 106 - 1155 PACIFIC AVE
MANHOLE	○	---	TRAFFIC SIGNALS	[Pattern]	CONCRETE PAVERS	[Pattern]	DATE	DESIGNED BY T.K. CHECKED BY R.W. DRAWN BY T.K. APPROVED BY
CATCH BASIN	□	---	HYDRO/STREET LIGHT	---	EXISTING	[Pattern]	DATE	HOR. SCALE: 1 : 250 VERTICAL: 1 : 10
CURB INLET	△	---	MTS	---	PROPOSED	[Pattern]	DATE	1. SUBMIT FOR PLAN APPROVAL 17/02/23 T.K. NO. REVISIONS DATE BY
HYDRO POLE	○	---	CURB RENEWAL	---	LEGEND - PLAN	[Pattern]	DATE	2017/03/29
LIGHT STANDARD	○	---	PROPERTY LINE	---	NORTH GUTTER	[Pattern]	DATE	ENGINEER'S SEAL PROVINCE OF MANITOBA FIRST LAST Member # REGISTERED ENGINEER
TRAFFIC SIGNAL POLE	+	---	RAMP CURB	---	CENTER LINE	[Pattern]	DATE	THE CITY OF WINNIPEG PUBLIC WORKS DEPARTMENT
SURVEY BAR	+	---	ELEVATIONS	(231.000)	SOUTH GUTTER	[Pattern]	DATE	FROM INKSTER BOULEVARD TO McPHILLIPS STREET PAVEMENT REHABILITATION AND ASSOCIATED WORKS FROM STA. 2+00 TO STA. 3+50
TEST HOLE	+	---	TREE	---	LEGEND - PROFILE	[Pattern]	DATE	CITY DRAWING NUMBER SE-17-23 SHEET 12 OF 13
EXISTING	---	---	LEGEND - PLAN	---	PROPOSED	[Pattern]	DATE	2

NOTE:
LOCATION OF UNDERGROUND STRUCTURES AS SHOWN ARE BASED ON THE BEST INFORMATION AVAILABLE. BUT NO GUARANTEE IS GIVEN THAT ALL EXISTING UTILITIES ARE SHOWN OR THAT THE GIVEN LOCATIONS ARE EXACT. CONFIRMATION OF EXISTENCE AND EXACT LOCATION OF ALL SERVICES MUST BE OBTAINED FROM THE INDIVIDUAL UTILITIES BEFORE PROCEEDING WITH CONSTRUCTION.



THE CITY OF WINNIPEG
PUBLIC WORKS DEPARTMENT

LANDSDOWNE AVENUE
FROM INKSTER BOULEVARD TO McPHILLIPS STREET
PAVEMENT REHABILITATION AND ASSOCIATED WORKS
FROM STA. 2+00 TO STA. 3+50