

PRELIMINARY
NOT TO BE USED FOR CONSTRUCTION

ALL WATER SERVICES WITHIN THE LIMITS OF THE RECONSTRUCTION SHALL BE INSULATED AS PER SPECIFICATION E-10

CONSTRUCTION NOTES
1) CURB REPLACEMENT AS DIRECTED BY THE CONTRACT ADMINISTRATOR.
2) ALL STREET RADIUS CURB UNDER 15M RADIUS SHALL BE REPLACED AS MODIFIED OR AS DIRECTED BY THE CONTRACT ADMINISTRATOR.
3) INSTALL DETECTIBLE WARNING SURFACE TILES AT CURB RAMPS AS PER CW-3326

WARNING
IF POWER EQUIPMENT OR EXPLOSIVES ARE TO BE USED FOR EXCAVATION ON THIS PROJECT THE CONTRACTOR MUST:
1) OBTAIN CLEARANCE FROM THE GAS UTILITY PRIOR TO EXCAVATION.
2) TAKE PRECAUTION TO AVOID DAMAGE TO GAS UTILITY INSTALLATIONS.
SEE PROVINCIAL REGULATION 210/72 FOR DETAILS

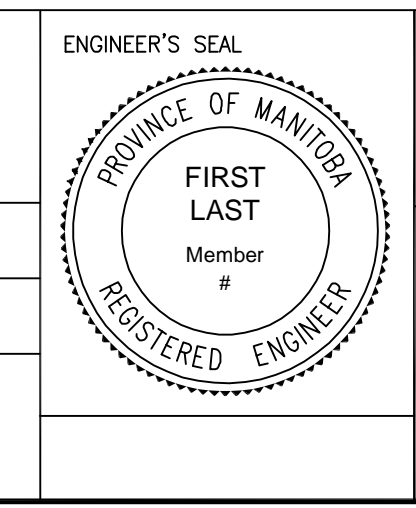
HYDRANT	+	LDS/WWS	---	TREE	○
VALVE	●	WATERMAIN	---	CONCRETE	■
CURB STOP	○	GAS	---	CONCRETE SIDEWALK	■
MANHOLE	○	TRAFFIC SIGNALS	---	ASPHALT	■
CATCH BASIN	□	HYDRO/STREET LIGHT	---	BRICK	■
CURB INLET	▲	MTS	---	FENCE	■
HYDRO POLE	○	CURB RENEWAL	---	CONCRETE PAVERS	■
LIGHT STANDARD	○	PROPERTY LINE	---	LEGEND - PLAN	---
TRAFFIC SIGNAL POLE	○	RAMP CURB	---	WEST GUTTER	---
SURVEY BAR	+	ELEVATIONS	(231.000)	CENTER LINE	---
TEST HOLE	+	SURVEY MONUMENT	---	EAST GUTTER	---
EXISTING	---	LEGEND - PLAN	---	LEGEND - PROFILE	---
PROPOSED	---	EXISTING	---	PROPOSED	---

LOCATION APPROVED UNDERGROUND STRUCTURES		B.M. ELEV.	IB @ NE CORNER 960 WOLSELEY AVE. 231.993
SUPR. U/G STRUCTURES	DATE		
NOTE:	LOCATION OF UNDERGROUND STRUCTURES AS SHOWN ARE BASED ON THE BEST INFORMATION AVAILABLE. BUT NO GUARANTEE IS GIVEN THAT ALL EXISTING UTILITIES ARE SHOWN OR THAT THE GIVEN LOCATIONS ARE EXACT. CONFIRMATION OF EXISTENCE AND EXACT LOCATION OF ALL SERVICES MUST BE OBTAINED FROM THE INDIVIDUAL UTILITIES BEFORE PROCEEDING WITH CONSTRUCTION.		
NO.	REVISIONS	DATE	BY
1.	SUBMIT FOR PLAN APPROVAL	17/02/23	M.D

**ENGINEERING DIVISION
TECHNOLOGY SERVICES BRANCH
106 - 1155 PACIFIC AVE**

DESIGNED BY: E.H & M.D.
CHECKED BY: R.W.
DRAWN BY: E.H & M.D.
APPROVED BY:

HOR. SCALE: 1 : 250
VERTICAL: 1 : 10
DATE: 2017/04/03



BID OPPORTUNITY NO. 4-2017

**THE CITY OF WINNIPEG
PUBLIC WORKS DEPARTMENT**

LENORE STREET
FROM WOLSELEY AVE TO WESTMINSTER AVE
ASPHALT RECONSTRUCTION AND ASSOCIATED WORKS
FROM STA. 0+95 TO STA. 2+50

CITY DRAWING NUMBER SE-17-12
SHEET 1 OF 13

1